



INDUSTRIAL FOOTWEAR

2022



3 CONVENIENT WAYS TO SHOP FOR COMPANY FOOTWEAR

It's never been easier for company employees to purchase industrial footwear at your favorite Mark's store.

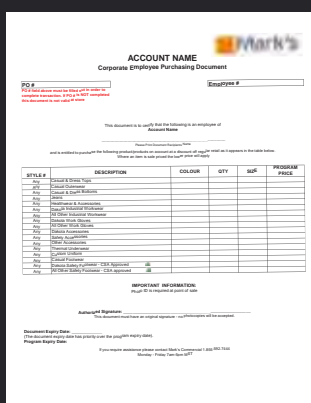


CLIENT SAVINGS CARD

Show the card at any Mark's store to receive your specified discount for a variety of store items shown on the card.

These cards are re-useable and valid until the expiry date found at the bottom of the card. The card must be presented for discounts to be applied against regular priced items.

(In the event of an item being sale priced, the lower price will apply.)



CLIENT VOUCHER

Simply show the voucher at any Mark's store to receive the specified discount shown for a variety of store items listed on the voucher.

The voucher must be shown for discounts to be applied against regular priced items. (In the event of an item being sale priced, the lower price will apply.)



CLIENT INDUSTRIAL FOOTWEAR PURCHASING CARD

Our new industrial footwear purchasing card contains all the benefits of the voucher combined with a more flexible client reporting experience and easier in-store purchasing.



MEN'S

8 INCH BOOTS	1
METGUARDS	19
6 INCH BOOTS	23
HIKERS	35
ATHLETIC	47
ANTI-SLIP	61
STATIC DISSIPATIVE	67
WET WEATHER	69
WINTER BOOTS	77

WOMEN'S

8 INCH BOOTS	83
6 INCH BOOTS	87
HIKERS	93
ATHLETIC	99
ANTI-SLIP	105
WET WEATHER	111
WINTER BOOTS	115

Sizes may be limited in some styles due to unforeseen circumstances. Consult your corporate sales person for the most up-to-date information on styles shown in this book.

Look for these symbols with each style to know if it's suitable for your profession.



Contents

8 INCH FOOTWEAR



SIZES: 7-11,12,13,14

STYLE: 5ANADK2-8500

AGGRESSOR

8" STSP WORK BOOT

- Buffalo Nubuck leather upper.
- Polyurethane toe guard.
- Breathable Air Mesh® lining.
- Removable EVA footbed.
- One density polyurethane midsole/outsole.

**BEST
SELLER!**



CSA GRADE 1 STEEL TOE, STEEL PLATE. ESR.

SIZES: 7-11,12,13,14

STYLE: 5ANADK5-8877

Equipped with TPU DURATOE® durable toecaps over the tough, full-grain buffalo leather uppers, these Dakota boots have TARANTULA ANTI-SLIP™ rubber outsoles for excellent traction on slick surfaces. Warm and light T-MAX® INSULATION makes these boots ideal for use in cold environments. With CSA Grade 1 steel toes and steel plates, these work boots are ideal for construction and trades workers or general purpose applications.

DAKOTA

WORKPRO SERIES

8" "877" STSP WORK BOOT

- Buffalo leather upper.
- DURATOE® TPU guard.
- Breathable, moisture wicking mesh lining.
- Abrasion resistant heel counter.
- 200g T-MAX® insulation.
- TARANTULA® ANTI-SLIP rubber outsole.

**BEST
SELLER!**

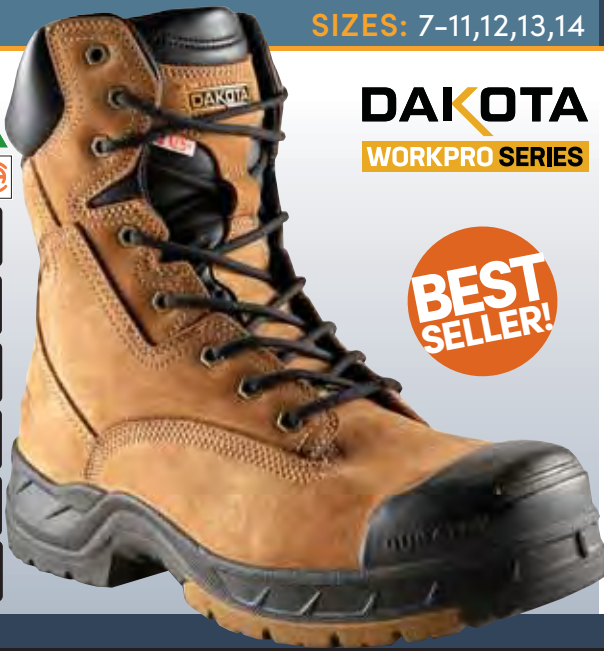


CSA GRADE 1 STEEL TOE, STEEL PLATE. ESR.

TARANTULA® ANTI-SLIP
rubber outsole.

SIZES: 7-11,12,13,14

STYLE: 5ANADK2-8006



DAKOTA
WORKPRO SERIES

**BEST
SELLER!**

8" "8006" QUAD COMFORT STCP WORK BOOT

- Nubuck leather upper.
- Polyurethane DURATOE® guard.
- Breathable and moisture wicking Cambrelle lining with 200g T-MAX® insulation.
- Removable 4 density EVA footbed.
- Direct injected polyurethane midsole.
- TARANTULA® ANTI-SLIP rubber outsole.



TARANTULA® ANTI-SLIP
rubber outsole.



CSA GRADE 1 STEEL TOE, COMPOSITE PLATE. ESR.

SIZES: 7-12,13,14,15,16,17

STYLE: 5ANADK5-8529



DAKOTA
WORKPRO SERIES

**BEST
SELLER!**

8" "529" STSP WORK BOOT

- Full grain leather upper.
- DURATOE® "529" TPU toecap.
- Moisture wicking and breathable DRI-TEC® lining with 200g T-MAX® insulation.
- Flexible polyurethane welt construction.
- Cushioning Rubberlon midsole.
- TARANTULA® ANTI-SLIP rubber outsole.



TARANTULA® ANTI-SLIP
rubber outsole.



CSA GRADE 1 STEEL TOE, COMPOSITE PLATE. ESR.

SIZES: 7-11,12,13,14

STYLE: 5ANADK9-8518



DAKOTA
WORKPRO SERIES

8" "8518" PU/TPU SAFETY STSP WORK BOOT

- Nubuck leather upper.
- Polyurethane DURATOE® guard.
- DRI-TEC lining with FRESHTECH®.
- 200g T-MAX® insulation.
- Removable polyurethane foam footbed.
- Polyurethane midsole.
- TPU outsole.



CSA GRADE 1 STEEL TOE, STEEL PLATE. ESR.



SIZES: 7-11,12,13,14,15

STYLE: 5ANADK5-8529WP



DAKOTA
WORKPRO SERIES

**BEST
SELLER!**

8" "529" HD3 WATERPROOF STSP WORK BOOT

- Waterproof leather upper.
- DURATOE® "529" TPU guard.
- Moisture wicking and breathable DRI-TEC® lining with 200g T-MAX® insulation.
- HYPER-DRI® HD3 waterproof, breathable membrane.
- Cushioning Rubberlon midsole.
- TARANTULA® ANTI-SLIP rubber outsole.

TARANTULA® ANTI-SLIP
rubber outsole.



CSA GRADE 1 STEEL TOE, STEEL PLATE. ESR.



SIZES: 7-11,12,13,14,15,16,17

STYLE: 5ANADK9-8517



DAKOTA
WORKPRO SERIES

**BEST
SELLER!**

8" "8517" QUAD COMFORT STCP WORK BOOT

- Full grain leather upper.
- FRESHTECH® treated lining.
- Multiple density removable polyurethane footbed.
- 200g T-MAX® insulation.
- Flexible poured polyurethane welt midsole.
- TARANTULA® ANTI-SLIP rubber outsole.

TARANTULA® ANTI-SLIP
rubber outsole.



CSA GRADE 1 STEEL TOE, COMPOSITE PLATE. ESR.



SIZES: 7-11,12,13,14

STYLE: 5ANADK9-8537



DAKOTA
WORKPRO SERIES

8" "8537" QUAD COMFORT ATCP WORK BOOT

- Full grain leather upper with TPU/Kevlar® reinforced molded side quarter panels.
- Breathable lining with 200g T-MAX® insulation.
- TPU DURATOE® guard.
- Multiple density removable polyurethane footbed.
- Flexible poured polyurethane welt midsole.
- TARANTULA® ANTI-SLIP rubber outsole.

TARANTULA® ANTI-SLIP
rubber outsole.

CSA GRADE 1 ALUMINUM TOE, COMPOSITE PLATE. ESR.



SIZES: 7-11,12,13,14

STYLE: 5ANADK9-8522

DAKOTA
WORKPRO SERIES

8" "8522" QUAD COMFORT WATERPROOF STSP WORK BOOT

- Waterproof full grain leather upper.
- TPU DURATOE® guard.
- 200g T-MAX® insulation.
- HYPER-DRI® HD3 waterproof, breathable membrane.
- Multiple density removable polyurethane footbed.
- Poured polyurethane welt midsole.
- TARANTULA® ANTI-SLIP rubber outsole.



TARANTULA® ANTI-SLIP
rubber outsole.

CSA GRADE 1 STEEL TOE, STEEL PLATE. ESR.

SIZES: 7-11,12,13,14

STYLE: 5ANADK0-8550

An ideal safety work shoe for facilities that are prone to slick floors, this Dakota design features Tarantula Anti-Slip® rubber outsoles. They have composite toes and plates and are resistant to puncture and electric shock. The insulated boots have linings treated with FRESHTECH® to inhibit the growth of fungi, mold and mildew. Comfort features include padded collars and tongues to support your legs throughout your shift.

DAKOTA
WORKPRO SERIES

8" "8550" CTSP WORK BOOT

- Leather upper.
- DRI-TEC® lining with FRESHTECH®.
- 200g T-MAX® insulation.
- Removable polyurethane sponge footbed.
- EVA midsole.
- TARANTULA® ANTI-SLIP rubber outsole.
- DURATOE® Axis Asymmetrical composite toe, steel plate.

TARANTULA® ANTI-SLIP
rubber outsole.

CSA GRADE 1 COMPOSITE TOE, STEEL PLATE. ESR.



- Waterproof full grain leather upper.
- TPU DURATOE® guard.
- Breathable lining with FRESHTECH®.
- Removable multi-density polyurethane footbed.
- 200g T-MAX® insulation.
- HYPER-DRI® HD3 waterproof, breathable membrane.
- Poured polyurethane midsole.
- Vibram® Fire & Ice rubber outsole.

Vibram® Fire & Ice
rubber outsole.



CSA GRADE 1 STEEL TOE, COMPOSITE PLATE. ESR.

A tough safety boot from Dakota, this eight-inch style features composite toes and plates. They are also electric shock resistant and puncture resistant. The full grain leather boots are protected with Duratoo® molded toe caps applied to the outside of the boots to increase the life of the toe area. The lining is treated with Freshtech® – a safe and invisible microbial treatment that inhibits the growth of fungi, mold and mildew, in addition to odour-causing bacteria. Bottomed out with Tarantula Anti-Slip® outsoles, they provide the ultimate in slip protection by reducing the likelihood that you'll slip and fall on wet and/or greasy surfaces.*



8" "8512" CTCP METAL FREE WORK BOOT

- Full grain leather upper.
- TPU DURATOE® guard.
- DRI-TEC® lining with FRESHTECH®.
- Removable ETPU footbed.
- Polyurethane midsole.
- TARANTULA® ANTI-SLIP rubber outsole.
- Metal free.

TARANTULA® ANTI-SLIP
rubber outsole.



CSA GRADE 1 COMPOSITE TOE, COMPOSITE PLATE. ESR.

SIZES: 7-11,12,13,14

STYLE: 5ANADK9-8521



DAKOTA WORKPRO SERIES

8" "ADAPTIVE FIT" CTCP WORK BOOT

- Full grain leather upper.
- DRI-TEC® lining with FRESHTECH®.
- Heated moldable lining and footbed for custom comfort.
- 200g T-MAX® insulation.
- TARANTULA® ANTI-SLIP rubber outsole.
- DURATOE® Axis Asymmetrical composite toe.

TARANTULA® ANTI-SLIP
rubber outsole.



CSA GRADE 1 COMPOSITE TOE, COMPOSITE PLATE. ESR.



SIZES: 7-11,12,13,14

STYLE: 5ANADK9-8516



DAKOTA WORKPRO SERIES

8" "8516" HD3 WATERPROOF CTCP WORK BOOT

- Waterproof leather upper.
- 200g T-MAX® insulation.
- HYPER-DRI® HD3 waterproof, breathable membrane.
- TPU DURATOE® guard.
- DRI-TEC® lining with FRESHTECH®.
- Removable ETPU footbed.
- TARANTULA® ANTI-SLIP rubber outsole.

TARANTULA® ANTI-SLIP
rubber outsole.



CSA GRADE 1 COMPOSITE TOE, COMPOSITE PLATE. ESR.



SIZES: 7-11,12,13,14

STYLE: 5ANADK7-8510



DAKOTA WORKPRO SERIES

Ranked by Toronto
Rehabilitation Institute as a
top slip-resistant
winter boot.
RateMyTreads.com



8" "8510" VIBRAM ARCTIC GRIP CTCP WORK BOOT

- Full grain leather upper.
- Moisture wicking and breathable DRI-TEC® lining.
- 200g T-MAX® insulation.
- Removable EVA sponge footbed.
- TPU DURATOE® guard.
- Vibram® Arctic Grip Pro rubber outsole.

Vibram® Arctic Grip Pro
rubber outsole.

CSA GRADE 1 COMPOSITE TOE, COMPOSITE PLATE. ESR.



SIZES: 7-11,12,13,14 **STYLE:** 5ANADK0-8560

These Dakota men's eight-inch safety boots are made of ballistic nylon for durability and are waterproof. For added boot protection, they have exterior toe caps, built to withstand hard wearing conditions and extending the life of the toe box. They're constructed with DRI-TEC® linings treated with FRESHTECH® that inhibits the growth of odour and stain-causing bacteria.

Our T-MAX® insulation provides maximum warmth and superior comfort when the temperature is low. Safety features include composite toes and plates and the boots resist puncture and electric shock.

DAKOTA

WORKPRO SERIES

8" "8560" CTCP BALLISTIC NYLON BOOT

- Ballistic nylon upper with water resistant backing.
- DRI-TEC® lining with FRESHTECH®.
- Removable ETPU footbed.
- 200g T-MAX® insulation.
- HYPER-DRI® HD3 waterproof, breathable membrane.
- Multi-density polyurethane midsole.
- TARANTULA® ANTI-SLIP rubber outsole.



TARANTULA® ANTI-SLIP rubber outsole.



CSA GRADE 1 COMPOSITE TOE, COMPOSITE PLATE. ESR.

SIZES: 7-11,12,13 **STYLE:** 5ANADK8024B

DAKOTA

WORKPRO SERIES

8" "IRONWORKER" STSP UNLINED BOOT

- Oiled full grain leather upper with lace to toe lacing system.
- Abrasion resistant toe guard.
- Unlined.
- Removable triple density footbed.
- Wedge rubberlon outsole.



CSA GRADE 1 STEEL TOE, STEEL PLATE. ESR.



SIZES: 7-11,12,13,14

STYLE: 5ANADK8-8523



DAKOTA
WORKPRO SERIES

8" "523" IRONWORKER STSP WORK BOOT

- Buffalo leather upper.
- Abrasion resistant toe guard.
- Breathable, moisture wicking DRI-TEC® lining with FRESHTECH®.
- 200g T-MAX® insulation.
- Removable triple density footbed.
- Wedge rubberlon outsole.



CSA GRADE 1 STEEL TOE, STEEL PLATE. ESR.



SIZES: 7-11,12,13,14

STYLE: HHS172003



HH
workwear

**BEST
SELLER!**

8" ULTRALIGHT ATCP WORK BOOT

- High abrasion nylon upper.
- TPU toe cap.
- Breathable, moisture wicking DRI-TEC lining.
- Removable open cell EVA footbed.
- Lightweight EVA midsole.
- Rubber outsole.

EXCLUSIVELY AT
Mark's



CSA GRADE 1 ALUMINUM TOE, COMPOSITE PLATE. ESR.



SIZES: 7-11,12,13,14

STYLE: HHF182004



HH
workwear

8" CTCP WORK BOOT

- Waterproof, full grain leather upper.
- Air Frame lining with 400g T-MAX® insulation.
- Waterproof membrane.
- Removable polyurethane footbed.
- Anti-slip rubber outsole.
- Durable TPU toe guard.

EXCLUSIVELY AT
Mark's



CSA GRADE 1 COMPOSITE TOE, COMPOSITE PLATE. ESR.



SIZES: 7-11,12,13,14

STYLE: HHF212005



8" HIGH ABRASION WATERPROOF ATCP WORK BOOT

- Lenzi textile upper.
- Breathable mesh lining with DRI-TEC®.
- 200g T-MAX® insulation.
- Removable polyurethane sponge footbed.
- HELLY TECH® Performance waterproof membrane.
- Rubber outsole.

EXCLUSIVELY AT

Mark's

AVAILABLE

DECEMBER 2021



CSA GRADE 1 ALUMINUM TOE, COMPOSITE PLATE. ESR.



SIZES: 7-14 Full Sizes Only

STYLE: HHS202023

From Helly Hansen Workwear, the Extralight boots are easy on the feet when you're up and around all day long. Made of matte leather with protective toe caps, these boots feature composite toes, puncture-resistant composite plates and they're resistant to electric shock. Slip-resistant outsole pods make them suitable for work areas that are prone to slick floors.



8" EXTRALIGHT® CTSP WORK BOOT

- Leather upper.
- TPU toe cap.
- Breathable Air Mesh® lining.
- Removable Ortholite® footbed.
- Extralight® midsole.
- Slip resistant rubber outsole pods.

EXCLUSIVELY AT

Mark's

Slip Resistant Rubber
Outsole Pads



CSA GRADE 1 COMPOSITE TOE, STEEL PLATE. ESR.



SIZES: 7-11,12,13,14 **STYLE:** HHS202022

Constructed with waterproof leather uppers and featuring the brand's Helly Tech® waterproof, windproof and breathable technology, these Helly Hansen high-cut work boots will keep your feet dry in wet environments. The lace-up safety boots have oil, acid and slip-resistant rubber outsoles for improved traction. Safety components include composite toes and puncture-resistant plates and electric shock resistance.

**BEST
SELLER!**



8" CTCP WATERPROOF WORK BOOT

- Full grain leather upper.
- TPU toe and heel guards.
- HELLY TECH Performance waterproof membrane.
- Removable polyurethane footbed.
- Injected polyurethane midsole.
- Oil, acid and slip resistant rubber outsole.

EXCLUSIVELY AT
Mark's

Oil, acid and slip resistant
rubber outsole



CSA GRADE 1 COMPOSITE TOE, COMPOSITE PLATE. ESR.

SIZES: 7-11,12,13,14 **STYLE:** HHS212040



8" WATERPROOF CTCP WORK BOOT

- Waterproof leather upper.
- HELLY TECH® waterproof membrane.
- DRI-TEC® lining with FRESHTECH®.
- 200g T-MAX® insulation.
- Desma injected polyurethane midsole.
- HELLY grip rubber outsole.

EXCLUSIVELY AT
Mark's

HELLY Grip
Rubber Outsole



CSA GRADE 1 COMPOSITE TOE, COMPOSITE PLATE. ESR.

SIZES: 7-11,12,13,14,15

STYLE: TR0A4NQ9FWE

TERRA

8" "SENTRY" CTCP WORK BOOT

- Full grain leather upper with bellows tongue.
- Abrasion resistant TECTUFF® leather back strap.
- Removable premium comfort polyurethane footbed.
- Polyurethane midsole.
- Slip resistant heavy duty TPU outsole.

Slip Resistant Heavy Duty
TPU Outsole



CSA GRADE 1 COMPOSITE TOE, COMPOSITE PLATE. ESR.

SIZES: 7-11,12,13,14

STYLE: TR0A4NRQGYX

TERRA

8" "GANTRY" CTCP WATERPROOF WORK BOOT

- Waterproof leather upper.
- Molded TERRA® TPU toe cap.
- Moisture wicking lining.
- Hydroguard® waterproof membrane.
- 3M™ Scotchlite™ reflective detail for high visibility.
- Polyurethane midsole.
- Vibram Fire & Ice® outsole.

Vibram® Fire & Ice
rubber outsole.



CSA GRADE 1 COMPOSITE TOE, COMPOSITE PLATE. ESR.

SIZES: 7,8-11,12,13,14,15

STYLE: 310090

KODIAK®

8" "BLUE PLUS" ATCP WORK BOOT

- Premium waterproof leather upper with sealed beams.
- Triple stitched molded TPU toe and heel guard.
- Moisture wicking lining.
- Removable COMFORTZONE® dual density footbed.
- Anatomical off0centre last.
- Polyurethane midsole.
- Oil resistant rubber outsole.

CSA GRADE 1 ALUMINUM TOE, COMPOSITE PLATE. ESR.

SIZES: 7-11,12,13

STYLE: P720211



8" "CONTROL" WATERPROOF CTCP WORK BOOT

- Full grain waterproof leather upper.
- 200g Thinsulate™ insulation.
- Removable EVA footbed.
- PVC welt midsole.
- Slip resistant rubber outsole.

Slip Resistant rubber outsole.



CSA GRADE 1 COMPOSITE TOE, COMPOSITE PLATE. ESR.



SIZES: 7-11,12,13

STYLE: P717629

These eight-inch, insulated work boots have foam insoles for added comfort and they're removable should you want to insert custom models. Thinsulate insulation works with the nylon mesh linings to keep your feet warm without overheating. The deep cleated rubber outsoles give you great traction. Ideal for construction workers, trades workers, builders and equipment operators, these waterproof workboots have CSA Grade 1 comp toes and plates and are electric shock resistant for safety.



8" "HAULER" WATERPROOF CTCP WORK BOOT

- Full grain waterproof leather upper.
- Breathable nylon mesh lining with 400g Thinsulate™ insulation.
- TPU toe guard.
- Removable Nylex and polyurethane footbed.
- Slip and abrasion resistant deep cleated rubber outsole.

Slip Resistant rubber outsole.



CSA GRADE 1 COMPOSITE TOE, COMPOSITE PLATE. ESR.



SIZES: 7-11,12,13

STYLE: P721620



Ranked by Toronto Rehabilitation Institute as a top slip-resistant winter boot. RateMyTreads.com

8" "THERMOSTATIC" VIBRAM ARCTIC GRIP CTCP WORK BOOT

- Full grain leather upper.
- Waterproof membrane.
- 400g Thinsulate™ insulation.
- "EASE" comfort footbed.
- Vibram® Arctic Grip Pro rubber outsole.

Vibram® Arctic Grip Pro rubber outsole.



CSA GRADE 1 COMPOSITE TOE, COMPOSITE PLATE. ESR.



SIZES: 7-11,12,13

STYLE: W17463

WOLVERINE

8" "I-90 DURASHOCKS WEDGE" CTCP WORK BOOT

- Full grain leather upper.
- Carbon Max Toe.
- Unlined
- Polyurethane midsole.
- I-90 abrasion resistant TPU pads in outsole for durability and comfort.



CSA GRADE 1 COMPOSITE TOE, COMPOSITE PLATE. ESR.



SIZES: 7-12,13

STYLE: W197107

WOLVERINE

8" "YUKON DURASHOCKS" CTCP WORK BOOT

- Full grain leather upper.
- Reinforced ArmorTek™ vamp and heel counter.
- Breathable mesh lining.
- Waterproof, breathable membrane.
- Removable DuraShocks® dual-density polyurethane footbed.
- Wolverine DuraShocks® rubber log insole.

CSA GRADE 1 COMPOSITE TOE, COMPOSITE PLATE. ESR.



SIZES: 7,8-11,12,13

STYLE: TB0A12EZ214



8" "GRIDWORKS" ATCP WORK BOOT

- Full grain leather upper.
- Mesh lining with antimicrobial treatment.
- Waterproof membrane.
- Removable anti-fatigue technology footbed.
- Lightweight, cushioning EVA midsole.
- All weather TPU outsole.



CSA GRADE 1 ALUMINUM TOE, COMPOSITE PLATE. ESR.



SIZES: 7-11,12,13,14,15

STYLE: TB0A1Q6Z001



8" "ENDURANCE HD" CTCP WORK BOOT

- Premium full grain waterproof, leather upper.
- Breathable mesh lining with anti-microbial treatment
- 200g Thermolite® insulation.
- Waterproof membrane.
- Removable anti-fatigue polyurethane footbed.
- Polyurethane footbed.
- All-weather TPU outsole.



CSA GRADE 1 COMPOSITE TOE, COMPOSITE PLATE. ESR.



SIZES: 7-11,12,13,14,15

STYLE: TB0A1Q5U214



8" "ENDURANCE HD" CTCP WORK BOOT

- Premium full grain waterproof leather upper.
- Breathable mesh lining with antimicrobial treatment.
- 200g Thermolite® insulation.
- Waterproof membrane.
- Removable anti-fatigue technology footbed.
- Polyurethane midsole.
- All-weather TPU outsole.

EXCLUSIVELY AT

Mark's



CSA GRADE 1 COMPOSITE TOE, COMPOSITE PLATE. ESR.



SIZES: 7-11,12,13,14,15

STYLE: 89645



8" "BOONDOCK" WATERPROOF CTCP WORK BOOT

- Full grain waterproof leather upper.
- Molded Vibram® rubber toe cap.
- Breathable mesh lining with 200g Thermolite® insulation.
- Removable anti-fatigue technology footbed.
- Polyurethane midsole with anti-fatigue technology.
- Vibram® Fire & Ice rubber outsole.

Vibram® Fire & Ice rubber outsole.

CSA GRADE 1 COMPOSITE TOE, COMPOSITE PLATE. ESR.

SIZES: 7-11,12,13,14,15

STYLE: TB0A28VR214



8" "BOONDOCK HD" CTCP WORK BOOT

- Waterproof leather upper.
- Molded Vibram® rubber toe.
- Breathable, moisture wicking lining.
- Waterproof membrane.
- Removable Step Propel™ footbed.
- Vibram® Arctic Grip Pro rubber outsole.

EXCLUSIVELY AT
Mark's

Vibram® Arctic Grip Pro rubber outsole.

CSA GRADE 1 COMPOSITE TOE, COMPOSITE PLATE. ESR.

SIZES: 8-11,12,13

STYLE: CMR8939



8" "WORK FLEX" CTCP WORK BOOT

- Waterproof leather upper with rubber toe overlay.
- Breathable lining with 400g Thinsulate™ insulation.
- Polyurethane Ortholite® footbed.
- EVA midsole.
- Carhartt® rubber outsole.

CSA GRADE 1 COMPOSITE TOE, COMPOSITE PLATE. ESR.

SIZES: 8-11,12,13

STYLE: CMR1999

carhartt

10" "FLEX MUD WELLINGTON" CTCP WORK BOOT

- Full grain leather upper.
- Polyurethane coated leather half shell.
- Breathable lining with 400g 3M™ Thinsulate™ insulation.
- Storm Defender® waterproof, breathable technology.
- Polyurethane/Ortholite™ footbed.
- EVA midsole/Carhartt® rubber outsole.



CSA GRADE 1 COMPOSITE TOE, COMPOSITE PLATE. ESR.



SIZES: 8-12,13,14,15

STYLE: CMR8959

carhartt

8" "GROUND FORCE" WATERPROOF CTCP WORK BOOT

- Black oil tanned leather upper.
- Storm Defender® waterproof, breathable technology.
- 400g 3M™ Thinsulate™ insulation.
- Removable dual form Insite® Technology footbed.
- Lightweight EVA midsole.
- Carhartt Ground Force® rubber outsole.



CSA GRADE 1 COMPOSITE TOE, COMPOSITE PLATE. ESR.



SIZES: 7-11,12,13,14

STYLE: 6020VT

ROYER

8" "VENTURA" INSULATED CTCP WORK BOOT

- Leather upper.
- TPU toe cap.
- TAIBRELLE® lining with 200g Thinsulate™ insulation.
- Removable polyurethane footbed.
- Polyurethane midsole.
- Oil resistant rubber outsole.



CSA GRADE 1 COMPOSITE TOE, COMPOSITE PLATE. ESR.



SIZES: 7-11,12,13,14

STYLE: 8600FLX

ROYER

8" "FLX" WATERPROOF CTCP WORK BOOT

- Waterproof full grain leather upper.
- TPU toe cap.
- Waterproof AIRFLOW™ membrane.
- TAIBRELLE® lining./ Removable polyurethane footbed.
- Polyurethane midsole.
- Rubber outsole.



CSA GRADE 1 COMPOSITE TOE, COMPOSITE PLATE. ESR.



SIZES: 8-11,12,13

STYLE: 10-8680

ROYER

8" METAL FREE CTCP WORK BOOT

- Leather & Armortex® fabric upper.
- TPU toe cap.
- Breathable, moisture wicking Taibrelle® lining.
- Airflow® waterproof membrane.
- Lightweight polyurethane midsole.
- Rubber outsole.



CSA GRADE 1 COMPOSITE TOE, COMPOSITE PLATE. ESR.



SIZES: 7-11,12,13,14,15

STYLE: 1024259

KEEN

8" "PHILADELPHIA" WATERPROOF CTCP WORK BOOT

- Full grain waterproof leather upper.
- KEEN.DRY waterproof, breathable lining.
- 200g KEEN.WARM insulation.
- Removable polyurethane footbed.
- Polyurethane midsole.
- Rubber outsole.



CSA GRADE 1 COMPOSITE TOE, COMPOSITE PLATE. ESR.



METGUARD FOOTWEAR



WHY METATARSAL WORK BOOTS ARE SO IMPORTANT IN THE WORKPLACE.

Metatarsal is the name given to the five bones found in the middle of the foot that form the arch and connected to tissues, ligaments and tendons, providing movement in the foot. This area of the foot is vulnerable to falling objects as there is virtually no flesh, muscle or fat protecting these important bones which makes wearing boots with metatarsal guards so important.

Safety Toe Versus Metatarsal Work Boots

The safety toe will protect primarily the big toe and two to three toes leaving the rest of the foot back to the ankle area susceptible to injury. In this small unprotected area there is 26 bones, 33 joints, 107 ligaments, 19 muscles plus tendons and nerves which can be protected with the addition of a metatarsal guard in work boots.

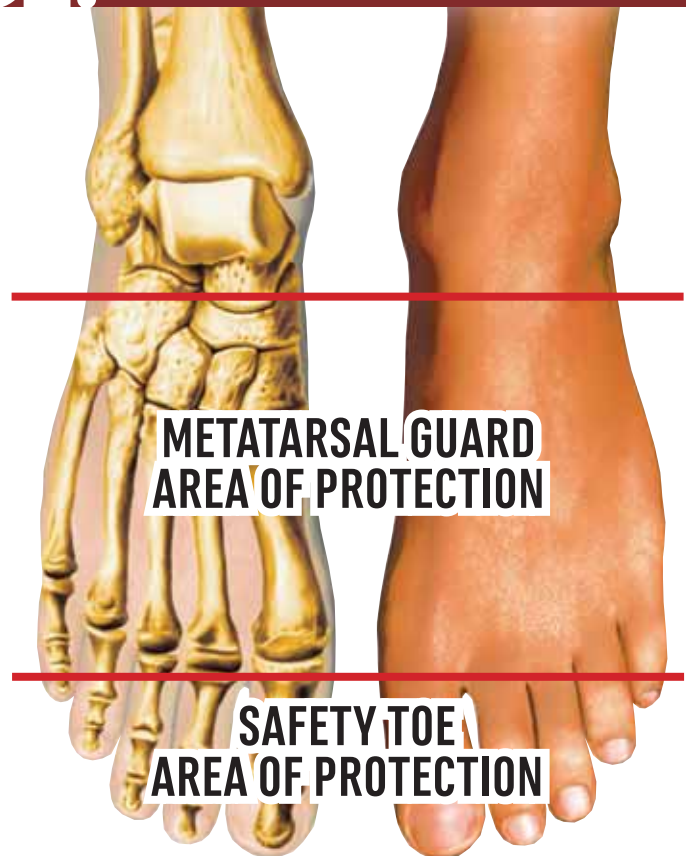
Choosing A Metguard Boot

There are two types of metatarsal guards – external and internal. They both have to meet the same CSA Z195-14 and ASTM standards, using a specific impact test for metatarsal guards. A 50-pound weight in the shape of a 1 inch diameter bar is dropped eighteen inches onto the metatarsal area of the shoe, resulting in a 75 foot-pound impact to the metatarsal guard. A full 1-inch clearance must be maintained under the metatarsal impact area on the inside of the shoe. The results are clearly seen and measured from a soft wax foot-form, which was placed within the shoe before the test and removed afterward to measure the deflection of the guard during impact.

The Difference Between External and Internal Guards?

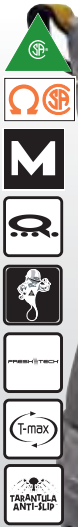
External metatarsal guards have the layer of protection on the outside of the footwear, like a turtle's shell. A protective material is usually attached to the toe of the shoe and extends upwards and covers the entire top of the foot. Internal metatarsal guards have the layer of flexible protection on the inside of the footwear offering more comfort. Both guard designs have been improved over the years to offer a high degree of protection with improved resilience and comfort.

Metatarsal boots are very necessary in many environments. It is important to remember that certain industries and companies have specific requirements, regarding which guard they prefer; however, advanced technology has made either option much safer, and more comfortable, in addition to being available in a myriad of styles.



SIZES: 7-11,12,13,14,15

STYLE: 5ANADK3-8112



DAKOTA
WORKPRO SERIES

8" "QUAD COMFORT" INTERNAL METGUARD STCP WORK BOOT

- Full grain leather upper with side zipper.
- Breathable, moisture wicking mesh lining with T-MAX insulation.
- Injected polyurethane midsole.
- Removable quadruple density footbed.
- TARANTULA ANTI-SLIP rubber outsole.
- Internal metatarsal protection.



CSA GRADE 1 STEEL TOE, COMPOSITE PLATE. ESR.

SIZES: 7-11,12,13,14,15

STYLE: 5ANADK7-8514

Equipped with sound safety and comfort technologies for on-the-job protection, these Dakota work boots have steel toes and plates and external metatarsal guards.

They're also resistant to puncture and electric shock. Comfort features include breathable, moisture-wicking linings, lightweight insulation and cushioned midsoles.

Tarantula Anti-Slip™ rubber outsoles help to prevent slips and falls.

**BEST
SELLER!**

DAKOTA
WORKPRO SERIES

8" "8514" STSP EXTERNAL METGUARD WORK BOOT

- Full grain leather upper.
- External metatarsal protection.
- Breathable, moisture wicking DRI-TEC® lining.
- 200g T-MAX® insulation.
- Removable polyurethane footbed.
- Poured polyurethane welt midsole.
- TARANTULA ANTI-SLIP® rubber outsole.



TARANTULA® ANTI-SLIP
rubber outsole.



CSA GRADE 1 STEEL TOE, STEEL PLATE. ESR.

SIZES: 7-11,12,13,14,15

STYLE: 5ANADK7-8415

With composite toes and plates, these Dakota safety boots feature the added protection of internal metatarsal guards and Duratoo® toe caps. They're built with our T-Max® lightest and warmest insulation and breathable, moisture-wicking Dri-Tec® linings. There are oversized loops on the back of the padded collars, making it easier to pull on the boots. These men's safety boots have Tarantula Anti-Slip™ rubber outsoles that help to prevent slips and falls.



DAKOTA

WORKPRO SERIES

8" "8415" CTCP INTERNAL METGUARD WORK BOOT

- Full grain leather upper.
- DURATOE® Axis Asymmetrical toe guard.
- Breathable, moisture wicking DRI-TEC® lining.
- 200g T-MAX® insulation.
- Removable polyurethane footbed.
- TARANTULA ANTI-SLIP® rubber outsole.
- Internal metatarsal protection.

TARANTULA® ANTI-SLIP
rubber outsole.



CSA GRADE 1 COMPOSITE TOE, COMPOSITE PLATE. ESR.

SIZES: 7-12,13,14,15

STYLE: 1022091



8" "PHILADELPHIA" INTERNAL METGUARD CTCP WORK BOOT

- Full grain waterproof leather upper.
- KEEN.DRY waterproof, breathable lining.
- Internal metatarsal protection.
- Heat, oil & slip resistant rubber outsole.
- Removable metatomical polyurethane footbed.



Slip Resistant
rubber outsole.



CSA GRADE 1 COMPOSITE TOE, COMPOSITE PLATE. ESR.



6 INCH FOOTWEAR



SIZES: 7-11,12,13,14

STYLE: 5ANBDK2-6500

AGGRESSOR

6" STSP WORK BOOT

BEST SELLER!

- Buffalo Nubuck leather upper.
- Polyurethane toe guard.
- Breathable Air Mesh lining.
- Removable EVA footbed.
- Single density polyurethane midsole and outsole.



CSA GRADE 1 STEEL TOE, STEEL PLATE. ESR.



SIZES: 7-11,12,13,14

STYLE: 5ANBDK6-6877

DAKOTA
WORKPRO SERIES

6" STSP WORK BOOT

BEST SELLER!

- Black Buffalo leather upper.
- TPU DURATOE® guard.
- Abrasion resistant heel counter.
- Breathable Air Mesh lining with 200g T-MAX® insulation.
- Removable EVA foam footbed.
- Polyurethane injected midsole.
- TARANTULA ANTI-SLIP® rubber outsole.



CSA GRADE 1 STEEL TOE, STEEL PLATE. ESR.



TARANTULA® ANTI-SLIP
rubber outsole.

SIZES: 7-11,12,13,14,15

STYLE: 5ANBDK2-6006

DAKOTA
WORKPRO SERIES

6" "6006" QUAD COMFORT STCP WORK BOOT

BEST SELLER!

- Nubuck leather upper.
- Polyurethane DURATOE® guard.
- Breathable and moisture wicking Cambrelle lining with 200g T-MAX® insulation.
- Removable 4 density EVA Ortholite® footbed.
- Direct injected polyurethane midsole.
- TARANTULA ANTI-SLIP® rubber outsole.



CSA GRADE 1 STEEL TOE, COMPOSITE PLATE. ESR.



TARANTULA® ANTI-SLIP
rubber outsole.

SIZES: 7-11,12,13,14

STYLE: 5ANBDK9-6518

Designed in a classic work boot style, these Dakota men's six-inch safety boots are made of Nubuck leather with padded collars and pull loops. For added boot protection, they have exterior toe caps, built to withstand hard wearing conditions and extending the life of the toe box. They're constructed with DRI-TECH® linings treated with FRESH TECH® that inhibits the growth of odour and stain-causing bacteria. Our T-MAX® insulation provides maximum warmth and superior comfort when the temperature is low.

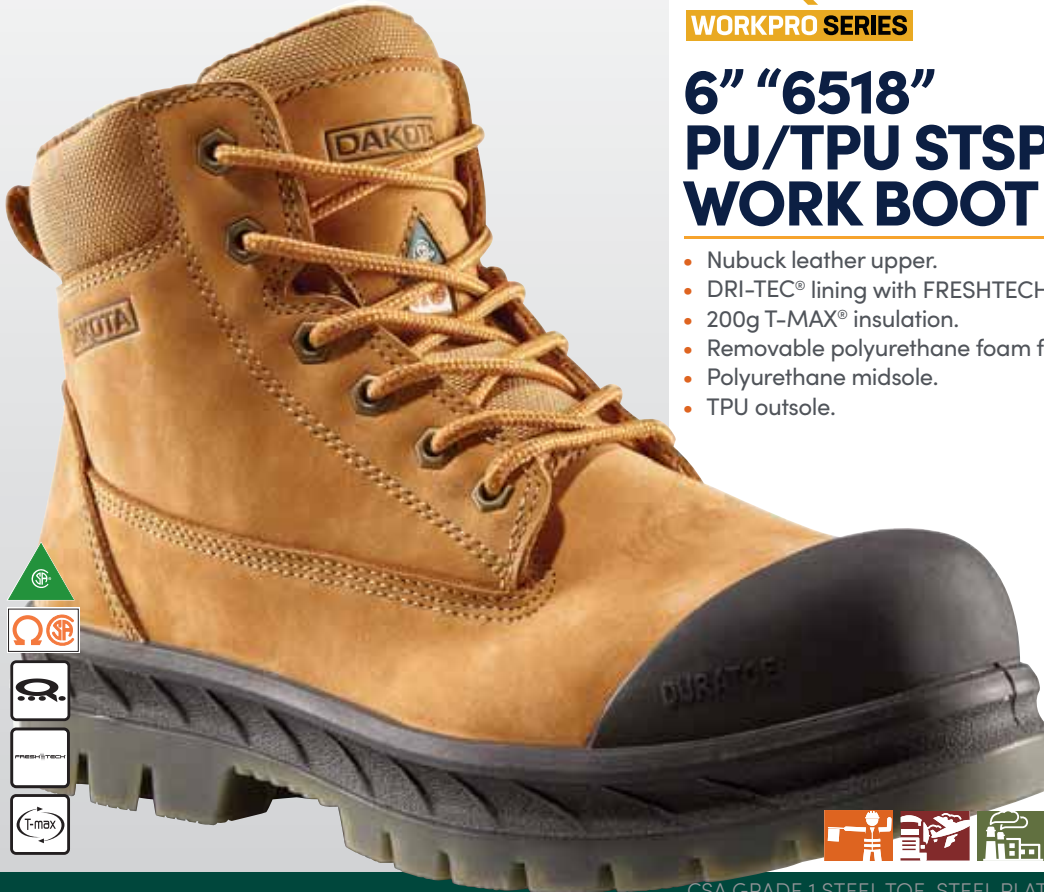
Safety features include steel toes and plates and the boots resist electric shock and puncture.

DAKOTA

WORKPRO SERIES

6" "6518" PU/TPU STSP WORK BOOT

- Nubuck leather upper.
- DRI-TEC® lining with FRESHTECH®.
- 200g T-MAX® insulation.
- Removable polyurethane foam footbed.
- Polyurethane midsole.
- TPU outsole.



CSA GRADE 1 STEEL TOE, STEEL PLATE. ESR.



SIZES: 7-11,12,13,14

STYLE: 5ANBDK8-6108A

DAKOTA

WORKPRO SERIES

6" "529" SLIP-ON STSP WORK BOOT

- Full grain leather upper.
- DURATOE TPU toe cap.
- DRI-TEC lining.
- Removable polyurethane footbed.
- Poured polyurethane welt midsole.
- TARANTULA ANTI-SLIP rubber outsole.



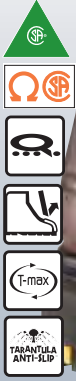
CSA GRADE 1 STEEL TOE, STEEL PLATE. ESR.

TARANTULA® ANTI-SLIP
rubber outsole.



SIZES: 7-11,12,13,14,15

STYLE: 5ANBDK8-6002



DAKOTA
WORKPRO SERIES

6" "6002" LEATHER STSP WORK BOOT

- Full grain leather upper.
- DURATOE® TPU toe cap.
- Breathable lining with 200g T-MAX® insulation.
- Removable polyurethane footbed.
- Injected polyurethane midsole.
- TARANTULA ANTI-SLIP® rubber outsole.



CSA GRADE 1 STEEL TOE, STEEL PLATE. ESR.

TARANTULA® ANTI-SLIP
rubber outsole.



SIZES: 7-11,12,13,14,15,16,17

STYLE: 5ANBDK9-6114



DAKOTA
WORKPRO SERIES

**BEST
SELLER!**

6" "6114" QUAD COMFORT STCP WORK BOOT

- Full grain leather upper.
- Lining with FRESH TECH® treatment.
- Multiple density removable polyurethane footbed.
- 200g T-MAX® insulation.
- Flexible poured polyurethane welt midsole.
- TARANTULA ANTI-SLIP® rubber outsole.



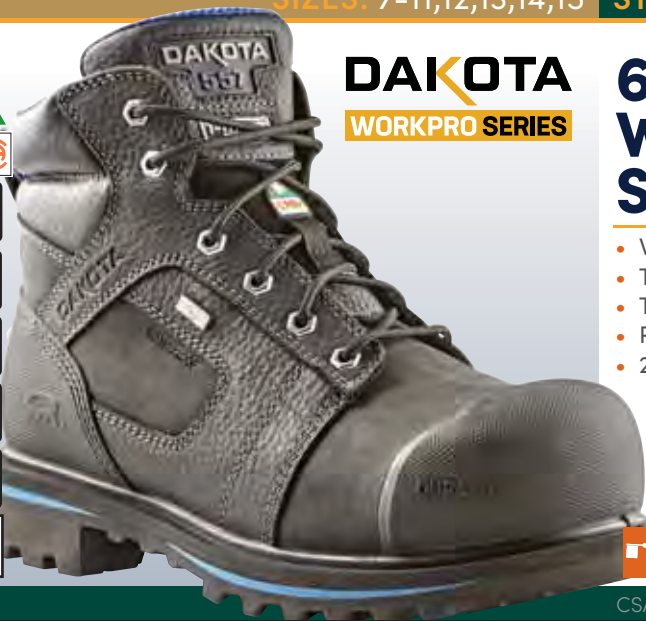
CSA GRADE 1 STEEL TOE, COMPOSITE PLATE. ESR.

TARANTULA® ANTI-SLIP
rubber outsole.



SIZES: 7-11,12,13,14,15

STYLE: 5ANBDK0-6557



DAKOTA
WORKPRO SERIES

6" "6557" WATERPROOF STCP WORK BOOT

- Waterproof full grain leather upper.
- TPU DURATOE® guard.
- Textile lining with FRESHTECH®.
- Removable polyurethane footbed.
- 200g T-MAX® insulation.
- HYPER-DRI HD3® waterproof, breathable membrane.
- Poured polyurethane midsole.
- Vibram® Fire & Ice rubber outsole.



CSA GRADE 1 STEEL TOE, COMPOSITE PLATE. ESR.

Vibram® Fire & Ice
rubber outsole.



SIZES: 7-11,12,13,14 **STYLE:** 5ANBDK9-6516

These Dakota men's work boots are made with waterproof leather uppers and DURATOE® toe caps. These boots have composite toes and plates and they're resistant to electric shock and puncture. T-MAX® insulation is used in these boots to regulate the temperature of your feet and allow moisture and excess heat to escape. These work boots are built with TARANTULA ANTI-SLIP® outsoles that provide the ultimate in slip protection by reducing the likelihood that you'll slip and fall on wet and/or greasy surfaces*.

DAKOTA

WORKPRO SERIES

6" "6516" CTCP WATERPROOF WORK BOOT

- 200g T-MAX® insulation.
- HYPER-DRI HD3® waterproof, breathable membrane.
- TPU DURATOE® guard.
- DRI-TEC® lining with FRESHTECH®.
- Waterproof leather upper.
- Removable ETPU footbed.
- TARANTULA ANTI-SLIP® rubber outsole.

TARANTULA® ANTI-SLIP rubber outsole.



CSA GRADE 1 COMPOSITE TOE, COMPOSITE PLATE. ESR.

SIZES: 7-11,12,13,14 **STYLE:** HHS173001



6" ULTRALIGHT ATCP WORK BOOT

- High abrasion nylon upper.
- TPU toe cap.
- Breathable, moisture wicking DRI-TEC lining.
- Removable open cell EVA footbed.
- Lightweight EVA midsole/rubber outsole.

EXCLUSIVELY AT

Mark's

**BEST
SELLER!**



CSA GRADE 1 ALUMINUM TOE, COMPOSITE PLATE. ESR.

SIZES: 7-11,12,13,14

STYLE: HHS193002



6" WATERPROOF CTCP WORK BOOT

- Full grain leather upper.
- Air Frame lining with 200g T-MAX® insulation.
- Removable polyurethane sponge footbed.
- HELLY TECH® Performance waterproof membrane.
- Lightweight EVA midsole.
- Rubber outsole.



CSA GRADE 1 COMPOSITE TOE, COMPOSITE PLATE. ESR.



SIZES: 7-14 Full Sizes Only

STYLE: HHS202027

From Helly Hansen, these Extralight men's work boots have buffalo leather uppers protected with TPU toe caps. For workplace safety the boots feature composite toes and plates. All-day comfort is ensured with breathable linings and Ortholite® insoles that are removable if required. Extralight midsoles support the feet while slip-resistant rubber outsoles with a deep lug pattern help you keep your footing on slick and uneven surfaces.



6" CTSP EXTRALIGHT WORK BOOT

- Buffalo leather upper.
- TPU toe cap.
- Breathable Air Mesh® lining.
- Removable Ortholite® footbed.
- Extralight® midsole.
- Slip resistant rubber outsole pods.



Slip Resistant rubber outsole.



CSA GRADE 1 COMPOSITE TOE, STEEL PLATE. ESR.



SIZES: 7-11,12,13,14

STYLE: HHS202026



6" CTCP WORK BOOT

**BEST
SELLER!**

- Full grain leather upper.
- TPU toe cap.
- HELLY TECH Performance waterproof membrane.
- Removable polyurethane footbed.
- Injected polyurethane midsole.
- Oil, acid and slip resistant rubber outsole.

EXCLUSIVELY AT
Mark's

Slip Resistant
rubber outsole.



CSA GRADE 1 COMPOSITE TOE, COMPOSITE PLATE. ESR.



SIZES: 7-11,12,13,14

STYLE: HHS212042



6" CTCP WATERPROOF LEATHER WORK BOOT

- Waterproof, leather upper.
- HELLY TECH® waterproof membrane.
- DRI TEC lining with FRESHTECH®/200g T-MAX insulation.
- Desma injected polyurethane midsole.
- Helly Grip rubber outsole.

EXCLUSIVELY AT
Mark's

Helly Grip
rubber outsole.



CSA GRADE 1 COMPOSITE TOE, COMPOSITE PLATE. ESR.



SIZES: 7-11,12,13,14

STYLE: TR0A4NRFBLK



6" "MURPHY" METAL FREE SLIP-ON CTCP WORK BOOT

- Full grain leather upper with elastic gore panels.
- Moisture wicking and abrasion resistant lining.
- Removable polyurethane footbed.
- CLEANFeet® odor management technology.
- Direct injected polyurethane midsole.
- Direct injected TPU outsole.



CSA GRADE 1 COMPOSITE TOE, COMPOSITE PLATE. ESR.



SIZES: 7-11,12,13

STYLE: P720204

These men's control composite toe, composite plate waterproof work boots from CATERPILLAR will keep your feet dry and warm throughout the day. Constructed with full grain waterproof leather uppers and waterproof membranes, they offer protection during wet weather and moisture-prone work sites. The EVA insoles are removable in favour of orthotics and 200gr Thinsulate insulation provides lightweight warmth. Added safety is ensured with slip-resistant rubber outsoles, composition toes and plates, and CSA Omega electric shock resistance. These lace-up workboots include quick-tie clasps on the upper portion and rear pull tabs for easy on-off.



6" "CONTROL" CTCP WATERPROOF WORK BOOT

- Waterproof full grain leather upper.
- 200g Thinsulate® insulation.
- Removable EVA footbed.
- Welt midsole.
- Slip resistant rubber outsole.

Slip Resistant
rubber outsole.



CSA GRADE 1 COMPOSITE TOE, COMPOSITE PLATE. ESR.

SIZES: 7-11,12,13

STYLE: P724582



6" "EXCAVATOR SUPERLITE" CTCP WATERPROOF WORK BOOT

- Nubuck leather upper.
- Breathable nylon mesh lining with 200g Thinsulate™ insulation.
- Durable TPU toe guard.
 - Cushioning polyurethane midsole.
 - Extreme slip resistant rubber outsole.



CSA GRADE 1 COMPOSITE TOE, COMPOSITE PLATE. ESR.



SIZES: 7-11,12,13

STYLE: P717627

CAT

6" "HAULER" WATERPROOF CTCP WORK BOOT

- Full grain waterproof leather upper.
- TPU toe cap.
- Breathable nylon mesh lining with 200g Thinsulate® insulation.
- Removable Nylex and polyurethane foam footbed.
- Slip and abrasion resistant deep cleated rubber outsole.

Slip Resistant
rubber outsole.



CSA GRADE 1 COMPOSITE TOE, COMPOSITE PLATE. ESR.

SIZES: 7-11,12,13

STYLE: P724867

CAT

6" "EDGE" CTCP WATERPROOF WORK BOOT

- Waterproof leather upper.
- Waterproof membrane.
- Breathable nylon mesh lining with 200g Thinsulate® insulation.
- Removable EVA footbed.
- EVA midsole.
- Rubber outsole.

From Caterpillar, these six-inch waterproof work boots are designed around the natural shape and motion of the foot for improved comfort. The lightweight boots are well cushioned, having a multi-contact EVA insole for superior support. The full-contact outsole lowers the risk of slips and falls while promoting proper alignment of the leg to the spine. This is key to creating good posture for all-day comfort. Safety features include composite toes and plates and electric shock resistance.



CSA GRADE 1 COMPOSITE TOE, COMPOSITE PLATE. ESR.

SIZES: 7-12,13

STYLE: W197106

The Yukon work boot from Wolverine is designed for maximum durability and performance. DuraShocks® technology insoles deliver comfort while you work and the chiseled-edge rubber lug outsole provides superior grip in varied conditions. Featuring Wolverine's all new freedom toe, a large toe box offers more room and comfort. The Yukon is crafted in full grain leather, treated to be waterproof and breathable.



WOLVERINE 

6" CTCP "YUKON" DURASHOCKS WORK BOOT

- Full grain leather upper.
- Reinforced ArmorTek™ vamp and heel counter.
- Breathable mesh lining.
- Waterproof, breathable membrane.
- Removable Durashocks® dual-density polyurethane footbed.
- Wolverine DuraShocks® rubber lug outsole.



CSA GRADE 1 COMPOSITE TOE, COMPOSITE PLATE. ESR.

SIZES: 7-12,13

STYLE: W207133



WOLVERINE 

6" "HELLCAT" CTCP WATERPROOF WORK BOOT

- Premium waterproof full grain leather upper.
- Breathable waterproof membrane with moisture wicking mesh.
- Rubber outsole.
- UltraSpring™ high rebound ETPU midsole.
- Removable Ortholite® UltraLite footbed.



CSA GRADE 1 COMPOSITE TOE, COMPOSITE PLATE. ESR.

SIZES: 7-11,12,13,14,15

STYLE: TBOA22H2231



6" "ICONIC" WATERPROOF ATSP WORK BOOT

- Waterproof leather upper.
- Waterproof membrane.
- Mesh lining with antimicrobial treatment.
- Removable anti-fatigue polyurethane footbed.
- Polyurethane midsole.
- Rubber outsole.



CSA GRADE 1 ALUMINUM TOE, STEEL PLATE. ESR.



SIZES: 7-11,12,13,14,15

STYLE: TBOA1Q6S214

From Timberland PRO, these Endurance HD six-inch boots have CSA Grade 1 composite toes and plates. The waterproof leather boots also feature all-weather outsoles for protection on outdoor work sites. When you spend long hours on your feet, you'll appreciate the antimicrobial linings for ongoing freshness and insoles which are built using anti-fatigue technology.



6" CTCP "ENDURANCE HD" WORK BOOT

- Premium full grain waterproof leather upper.
- Breathable mesh lining with antimicrobial treatment.
- Waterproof membrane.
- Removable anti-fatigue technology footbed.
- Polyurethane midsole.
- All-weather TPU outsole.



CSA GRADE 1 COMPOSITE TOE, COMPOSITE PLATE. ESR.

Slip Resistant rubber outsole.



SIZES: 7-11,12,13,14,15

STYLE: 91631



6" "BOONDOCK" WATERPROOF CTCP WORK BOOT

- Premium waterproof leather upper.
- Timberland PRO® rubber toe cap.
- Breathable Cambrelle® lining with waterproof lining.
- Removable anti-fatigue technology polyurethane footbed.
 - Polyurethane midsole.
 - Timberland PRO® all-weather TPU outsole.



CSA GRADE 1 COMPOSITE TOE, COMPOSITE PLATE. ESR.



SIZES: 7-12,13,14,15

STYLE: 1023250



6" "SAN JOSE" ATCP WORK BOOT

- Waterproof leather upper.
- KEEN.DRY® waterproof, breathable membrane.
- PI midsole.
- Removable metatomical polyurethane footbed.
- Oil and slip-resistant non-marking rubber outsole.



CSA GRADE 1 ALUMINUM TOE, COMPOSITE PLATE. ESR.

Slip Resistant
rubber outsole.



SIZES: 8-12,13,14,15

STYLE: CMR6971



6" LEATHER RUGGED FLEX CTCP WORK BOOT

- Full grain leather upper.
- Abrasion resistant rubber toe and heel bumpers.
- Polyurethane/Ortholite® footbed.
- Storm Defender® waterproof, breathable technology.
- Carhartt® Rugged Flex rubber outsole.



CSA GRADE 1 COMPOSITE TOE, COMPOSITE PLATE. ESR.



HIKER FOOTWEAR



SIZES: 7-11,12,13,14

STYLE: 5ANCAG9-2000

AGGRESSOR

LOW-CUT SAFETY STSP HIKING SHOE

- Polyurethane mesh upper.
- Mesh lining.
- Removable polyurethane footbed.
- EVA midsole.
- Rubber outsole.



CSA GRADE 1 STEEL TOE, STEEL PLATE. ESR.



SIZES: 7-11,12,13,14

STYLE: 5ANCAG9-2300

AGGRESSOR

MID-CUT SAFETY STSP HIKING BOOT

- Polyurethane mesh upper.
- Mesh lining.
- Removable polyurethane footbed.
- EVA midsole.
- Rubber outsole.



CSA GRADE 1 STEEL TOE, STEEL PLATE. ESR.



SIZES: 7-11,12,13,14

STYLE: 5ANCDK0-2302

DAKOTA
WORKPRO SERIES

QUAD COMFORT ATCP LOW-CUT YARD SHOE

- Open air mesh and polyurethane upper.
- Rubber heel and toe protection.
- Breathable mesh lining with FRESHTECH®.
- Removable footbed.
- Cushioning EVA midsole.
- TARANTULA ANTI-SLIP® rubber outsole.



CSA GRADE 1 ALUMINUM TOE, COMPOSITE PLATE. ESR.

TARANTULA® ANTI-SLIP
rubber outsole.



SIZES: 7-11,12,13,14

STYLE: 26039MDQC-AS

DAKOTA
WORKPRO SERIES

STSP MID-CUT APPROACH HIKER

**BEST
SELLER!**

- Polyurethane Nubuck and nylon mesh upper.
- Molded TPU DURATOE®.
- Breathable PK mesh and foam lining.
- Removable EVA footbed.
- Cushioning EVA midsole.
- TARANTULA ANTI-SLIP® rubber outsole.

TARANTULA® ANTI-SLIP
rubber outsole.

CSA GRADE 1 STEEL TOE, STEEL PLATE. ESR.

SIZES: 7-11,12,13,14

STYLE: 5ANCDK1-2126

A mid-cut safety boot from Dakota, they feature QUAD COMFORT® technology that combines four comfort components to address shock absorption, weight distribution, cushioning and pressure displacement. These work boots meet CSA Grade 1 requirements for aluminum toes and puncture-resistant plates. They are also resistant to electric shock.

DAKOTA
WORKPRO SERIES

QUAD COMFORT ATCP MID-CUT SAFETY HIKER

- Suede and mesh upper.
- Lining with FRESH TECH®.
- Removable polyurethane footbed.
- EVA midsole.
- TARANTULA ANTI-SLIP® rubber outsole.

TARANTULA® ANTI-SLIP
rubber outsole.

CSA GRADE 1 ALUMINUM TOE, COMPOSITE PLATE. ESR.

SIZES: 7-11,12,13,14 **STYLE:** 5ANCDK0-2301

A mid-cut safety boot from Dakota, they are waterproof as well as breathable for long-term comfort. QUAD COMFORT® technology combines four comfort components to address shock absorption, weight distribution, cushioning and pressure displacement. These work boots meet CSA Grade 1 requirements for aluminum toes and puncture-resistant plates. They are also resistant to electric shock.

DAKOTA

WORKPRO SERIES

QUAD COMFORT ATCP MID-CUT YARD SHOE

- Waterproof Buffalo leather upper.
- Rubber heel and toe protection.
- Breathable mesh lining.
- HYPER-DRI® HD3 waterproof, breathable membrane.
- Removable footbed.
- Cushioning EVA midsole.
- TARANTULA ANTI-SLIP® rubber outsole.



TARANTULA® ANTI-SLIP
rubber outsole.



CSA GRADE 1 ALUMINUM TOE, COMPOSITE PLATE. ESR.

SIZES: 7-11,12,13,14 **STYLE:** 5ANCDK8-2127

DAKOTA
WORKPRO SERIES

WATERPROOF STSP MID-CUT SAFETY HIKER

- Synthetic and mesh upper.
- Breathable lining with HYPER-DRI® HD3 waterproof, breathable membrane.
- Compression molded EVA midsole.
- Extra EVA heel pod to give added comfort.
- TARANTULA ANTI-SLIP® rubber outsole.



TARANTULA® ANTI-SLIP
rubber outsole.



CSA GRADE 1 STEEL TOE, STEEL PLATE. ESR.

SIZES: 7-11,12,13

STYLE: 5ANCDK7-2124

DAKOTA
WORKPRO SERIES

QUAD COMFORT ATCP MID-CUT HIKER

- Suede and mesh upper.
- EVA midsole with heel and forefoot pods for additional comfort.
- Rubber toe guard.
- Removable EVA footbed.
- TARANTULA ANTI-SLIP® rubber outsole.



CSA GRADE 1 ALUMINUM TOE, COMPOSITE PLATE. ESR.

TARANTULA® ANTI-SLIP
rubber outsole.



SIZES: 7-11,12,13,14

STYLE: 5ANCDK5-2120

These Dakota rugged leather boots are built to last with waterproof leather uppers and TPU abrasion-resistant toes and heels. To keep your feet dry, they have an HYPER-DRI® HD3 waterproof membrane and Dri-Tech linings that breathe while wicking moisture away from the skin. QUAD COMFORT® provides cushioning and shock absorption and EVA insoles are removable if you need to wear custom orthotics. Thick TARANTULA ANTI-SLIP® rubber outsoles provide safe traction on slick and uneven surfaces. These tough boots are recommended for warehouse, distribution, light manufacturing, trades areas and drivers.

DAKOTA
WORKPRO SERIES

WATERPROOF STCP HD3 LEATHER HIKER

- Waterproof leather upper.
- Rugged TPU abrasion resistant toe and heel guard.
- Breathable, moisture wicking DRI-TEC® lining.
- HYPER-DRI® waterproof, breathable membrane.
- Removable EVA footbed.
- Cushioning polyurethane midsole.
- TARANTULA ANTI-SLIP® rubber outsole.



CSA GRADE 1 STEEL TOE, COMPOSITE PLATE. ESR.

TARANTULA® ANTI-SLIP
rubber outsole.



SIZES: 7-11,12,13,14 **STYLE:** HHF171006

Sporting a hiking shoe design, these low-cut Helly Hansen safety boots have aluminum toes and composite plates. They are built with breathable mesh linings, removable Ortholite® insoles and supportive compression-moulded EVA midsoles. Tough rubber outsoles complete the design.



LOW-CUT ATCP HIKER

- Nylon mesh with welded TPU upper and TPU toe guard.
- Breathable mesh lining.
- Removable Ortholite® footbed.
- Compression molded EVA midsole.
- Rubber outsole.

EXCLUSIVELY AT
Mark's



CSA GRADE 1 ALUMINUM TOE, COMPOSITE PLATE. ESR.



SIZES: 7-11,12,13,14 **STYLE:** HHF171007



ATCP MID-CUT SAFETY HIKER

- Nylon mesh with welded TPU upper and TPU toe guard.
- Breathable mesh lining.
- Removable Ortholite® footbed.
- Compression molded EVA midsole.
- Rubber outsole.

EXCLUSIVELY AT
Mark's



CSA GRADE 1 ALUMINUM TOE, COMPOSITE PLATE. ESR.



SIZES: 7-11,12,13,14,15

STYLE: HHS191009



"SAFEVENT™" CTCP LOW-CUT HIKER

- Breathable woven upper with welded TPU overlays for protection.
- TPU toe bumper.
- Removable Ortholite® footbed.
- Compression molded EVA midsole with SafeVent air flow technology.
- Rubber outsole.

EXCLUSIVELY AT
Mark's



CSA GRADE 1 COMPOSITE TOE, COMPOSITE PLATE. ESR.



SIZES: 7-11,12,13,14,15

STYLE: HHS191008

From Helly Hansen Workwear, these men's SafeVent™ safety hiking boots are ideal if you work in warm environments where your feet are likely to sweat. SafeVent™ technology allows the feet to breathe through the sole, keeping your feet comfortable throughout the day. Safety features include composite toes and plates and the shoes resist electric shock and puncture.



"SAFEVENT™" CTCP MID-CUT HIKER

- Breathable knit upper with welded TPU overlays for protection.
- TPU toe bumper.
- Removable Ortholite® footbed.
- Compression molded EVA midsole with SafeVent® air flow technology.
- Rubber outsole.

EXCLUSIVELY AT
Mark's



CSA GRADE 1 COMPOSITE TOE, COMPOSITE PLATE. ESR.



SIZES: 7-11,12,13

STYLE: HHS211005



CTCP WATERPROOF LEATHER HIKER

- HELLY TECH® Performance leather upper.
- Moisture wicking air mesh lining.
- Removable comfort footbed.
- EVA midsole.
- Helly Grip rubber outsole.

EXCLUSIVELY AT
Mark's

**BEST
SELLER!**

Helly Grip
rubber outsole.

CSA GRADE 1 COMPOSITE TOE, COMPOSITE PLATE. ESR.

SIZES: 7-11,12,13,14

STYLE: HHS191010



WATERPROOF ATCP HIKING BOOT

- HELLY TECH® Performance waterproof microfibre and polyurethane upper.
- TPU molded toe cap.
- Breathable Air Mesh® lining.
- Removable Ortholite® footbed.
- Molded EVA midsole.
- Rubber outsole.

CSA GRADE 1 ALUMINUM TOE, COMPOSITE PLATE. ESR.

SIZES: 7-11,12,13,14

STYLE: 302120

KODIAK®

"TRAIL" CTCP LOW-CUT HIKER

- Waterproof leather upper.
- Rubber toe and heel guard.
- Breathable nylon mesh lining with waterproof membrane.
- Removable EVA footbed with heel shock absorber.
- Cushioning EVA midsole.
- Kodiak Ultimate slip and oil resistant rubber outsole.

Slip Resistant
rubber outsole.

CSA GRADE 1 COMPOSITE TOE, COMPOSITE PLATE. ESR.

SIZES: 7-11,12,13,14

STYLE: 302123

KODIAK®

WATERPROOF CTCP “JOURNEY” HIKER

- Waterproof leather upper.
- TPU heel guard.
- Rubber toe guard.
- Breathable nylon mesh lining with 200g Thinsulate™ insulation.
- Waterproof membrane.
- Removable EVA footbed.
- EVA midsole/rubber outsole.



CSA GRADE 1 COMPOSITE TOE, COMPOSITE PLATE. ESR.



SIZES: 7-11,12,13,14,15

STYLE: KD0A4TELA62

KODIAK®

“QUEST BOUND” WATERPROOF CTCP HIKING BOOT

- Waterproof full grain leather upper.
- TPU molded toe cap.
- Breathable waterproof membrane.
- Comfortzone® footbed with Ortholite® comfort foam.
- EVA midsole.
- Vibram® rubber outsole.



CSA GRADE 1 COMPOSITE TOE, COMPOSITE PLATE. ESR.



SIZES: 7-11,12,13

STYLE: P720996

CAT

“OUTLINE” STSP LEATHER HIKER

- Full grain leather upper.
- Breathable nylon mesh lining.
- Removable molded EVA footbed.
- Rubber midsole.
- Rubber outsole.



CSA GRADE 1 STEEL TOE, STEEL PLATE. ESR.



SIZES: 7-11,12,13,14,15

STYLE: TB0A1OP6001



"RIDGEWORK" CTCP WATERPROOF HIKER

- EverGuard™ waterproof leather upper.
- Breathable mesh lining.
- Waterproof membrane.
- Dual density EVA midsole.
- Removable anti-fatigue technology footbed.
- Timberland® PRO rubber outsole.

EXCLUSIVELY AT
Mark's

Slip Resistant
rubber outsole.



CSA GRADE 1 COMPOSITE TOE, COMPOSITE PLATE. ESR.



SIZES: 7-12,13,14

STYLE: 1025725



"KANSAS CITY" CTCP LOW-CUT HIKER

- Abrasion resistant synthetic upper with KEEN.BELLOWS FLEX technology.
- Mesh lining.
- KEEN.DRY waterproof, breathable membrane.
- Removable metatological polyurethane footbed.
- KEEN.ReGen® multi-density midsole.
 - Rubber outsole.
 - Metal Free.



CSA GRADE 1 COMPOSITE TOE, COMPOSITE PLATE. ESR.



SIZES: 7-12,13,14

STYLE: 1025701



"KANSAS CITY" CTCP WATERPROOF MID-CUT HIKER

- Abrasion resistant synthetic upper with KEEN.BELLOWS FLEX technology.
- Mesh lining.
- KEEN.DRY waterproof, breathable membrane.
- Removable metatological polyurethane footbed.
 - KEEN.ReGen® multi-density midsole.
 - Rubber outsole.
 - Metal Free.



CSA GRADE 1 COMPOSITE TOE, COMPOSITE PLATE. ESR.



SIZES: 7-12,13,14,15

STYLE: 1020096



"HAMILTON" CTCP WATERPROOF HIKER

- Waterproof leather upper.
- Reflective webbing for additional safety.
- KEEN.DRY waterproof, breathable membrane.
- Moisture wicking textile lining.
- Dual density compression molded EVA and polyurethane midsole.
- Oil and slip resistant, non-marking rubber outsole.

Slip Resistant
rubber outsole.



CSA GRADE 1 COMPOSITE TOE, COMPOSITE PLATE. ESR.

SIZES: 7-12,13,14,15

STYLE: J17865



"WINDOC" STSP LOW-CUT HIKER

- Suede and mesh upper.
- Breathable mesh lining.
- Removable EVA footbed.
- Oil and slip resistant rubber outsole.
- METAL FREE.

Slip Resistant
rubber outsole.



CSA GRADE 1 STEEL TOE, STEEL PLATE. ESR.

SIZES: 7-12,13,14

STYLE: J003345W



"JUNGLE MOC" CTCP SAFETY HIKER

- Nubuck leather upper.
- Protective and abrasion resistant synthetic toe cap.
- Breathable mesh lining.
- Removable footbed.
- EVA midsole.
- Rubber outsole.

Slip Resistant
rubber outsole.



CSA GRADE 1 COMPOSITE TOE, COMPOSITE PLATE. ESR.

SIZES: 7-12,13,14,15

STYLE: J17863



"WINDOC" STSP WATERPROOF HIKER

- Waterproof suede and mesh upper.
- Breathable mesh lining.
- Waterproof membrane.
- Removable EVA footbed.
- Oil and slip resistant rubber outsole.
- METAL FREE.

Slip Resistant rubber outsole.

CSA GRADE 1 STEEL TOE, STEEL PLATE. ESR.

SIZES: 7-12,13,14

STYLE: J19483W



"MOAB VERTEX" CTCP MID-CUT HIKER

- Waterproof full grain leather and breathable mesh upper.
- Breathable mesh lining.
- Merrell M Select™ DRY waterproof membrane.
- Oil and slip resistant rubber outsole.
- COMFORTBASE™ contoured footbed.
- Protective and abrasion resistant rubber toe cap.

Slip Resistant rubber outsole.

CSA GRADE 1 COMPOSITE TOE, COMPOSITE PLATE. ESR.

SIZES: 7-12,13,14,15

STYLE: J099383



"STRONGFIELD" CTCP WATERPROOF HIKER

- Leather and mesh upper.
- Breathable mesh lining.
- Merrell M Select™ DRY waterproof membrane.
- COMFORTBASE™ contoured footbed.
- ToughFrame midsole technology acts as an ecoskeleton for added protection.
- Oil, slip and heat resistant outsole.

EXCLUSIVELY AT
Mark's

Slip Resistant rubber outsole.

CSA GRADE 1 COMPOSITE TOE, COMPOSITE PLATE. ESR.

ATHLETIC FOOTWEAR



SIZES: 7-11,12,13,14

STYLE: 5ANDDK5-3613

DAKOTA
WORKPRO SERIES

STSP SKATE SHOE

- Action leather upper.
- Moisture wicking mesh lining.
- Removable EVA footbed.
- Rubber outsole.

**BEST
SELLER!**



CSA GRADE 1 STEEL TOE, STEEL PLATE. ESR.



SIZES: 7-11,12,13,14

STYLE: 5ANDDK9-3621

DAKOTA
WORKPRO SERIES

STSP ATHLETIC SAFETY SHOE

- Nylon upper with TPU overlay.
- Breathable mesh lining with FRESHTECH®.
- Removable polyurethane footbed.
- Lightweight EVA midsole.
- TARANTULA ANTI-SLIP® rubber outsole.

TARANTULA® ANTI-SLIP
rubber outsole.



CSA GRADE 1 STEEL TOE, STEEL PLATE. ESR.



SIZES: 7-11,12,13,14

STYLE: 5ANDDK8-3603

DAKOTA
WORKPRO SERIES

"3603" QUAD LITE ATSP ATHLETIC SHOE

- Mesh upper with welded TPU.
- Breathable mesh lining with FRESHTECH®.
- Removable EVA footbed.
- Injected EVA midsole.
- TARANTULA ANTI-SLIP® rubber outsole.

**BEST
SELLER!**

TARANTULA® ANTI-SLIP
rubber outsole.



CSA GRADE 1 ALUMINUM TOE, STEEL PLATE. ESR.



SIZES: 7-11,12,13,14

STYLE: 5ANDDK8-3604

DAKOTA
WORKPRO SERIES

"3604" QUAD LITE ATSP ATHLETIC SHOE

- Mesh upper with welded TPU.
- Breathable mesh lining with FRESHTECH®.
- Removable EVA footbed.
- Injected EVA midsole.
- TARANTULA ANTI-SLIP® rubber outsole.

**BEST
SELLER!**

TARANTULA® ANTI-SLIP
rubber outsole.



CSA GRADE 1 ALUMINUM TOE, STEEL PLATE, ESR.

SIZES: 7-11,12,13,14

STYLE: 5ANDDK6-3617

These men's mid-cut athletic shoes from Dakota feature high-abrasion synthetic uppers and breathable linings to keep your feet cool and dry. The QUAD COMFORT® LITE technology offers a lightweight cushioning system for extra comfort, and our FRESHTECH® technology keeps your feet feeling fresh. These shoes have removable EVA insoles when you need to wear orthotics. Rubber outsoles feature TARANTULA ANTI-SLIP® technology to help prevent slips and falls. With steel toes, steel plates, rubber toe and a heel guards and CSA Omega electric shock resistance, the shoes are built for safety.

DAKOTA
WORKPRO SERIES

STSP QUAD LITE MID-CUT ATHLETIC SHOE

- High abrasion synthetic upper.
- Rubber toe and heel guard.
- Breathable lining.
- Removable EVA footbed.
- Cushioning EVA midsole.
- TARANTULA ANTI-SLIP® rubber outsole.

TARANTULA® ANTI-SLIP
rubber outsole.



CSA GRADE 1 STEEL TOE, STEEL PLATE, ESR.

SIZES: 7-11,12,13,14 STYLE: 5ANDDK0-3821

A sporty look for on-the-job safety, these Dakota work shoes offer athletic styling and all-day comfort. These safety shoes meet CSA Grade 1 standards with composite toes and puncture-resistant composite plates. They're also electric shock resistant. The mesh linings are treated with FRESHTECH® to inhibit the growth of fungi, mold and mildew, in addition to odour-causing bacteria.

DAKOTA

WORKPRO SERIES

CTCP LIGHTWEIGHT LOW-CUT ATHLETIC SHOE

- Mesh upper.
- Breathable mesh lining with FRESHTECH®.
- Removable polyurethane foam footbed.
- Compression molded EVA midsole.
- TARANTULA ANTI-SLIP® rubber outsole.



TARANTULA® ANTI-SLIP
rubber outsole.



CSA GRADE 1 COMPOSITE TOE, COMPOSITE PLATE, ESR.

SIZES: 7-11,12,13,14 STYLE: 5ANDDK0-3822

DAKOTA

WORKPRO SERIES

CTCP LIGHTWEIGHT MID-CUT ATHLETIC

- Mesh upper.
- Breathable mesh lining with FRESHTECH®.
- Removable polyurethane foam footbed.
- Compression molded EVA midsole.
- TARANTULA ANTI-SLIP® rubber outsole.



TARANTULA® ANTI-SLIP
rubber outsole.



CSA GRADE 1 COMPOSITE TOE, COMPOSITE PLATE, ESR.

SIZES: 7-11,12,13,14,15

STYLE: 5ANDDK1-3619

DAKOTA
WORKPRO SERIES

**"3619" QUAD COMFORT
ATCP ATHLETIC SHOE**

- High abrasion mesh upper with welded polyurethane support cage.
- Breathable lining.
- Removable polyurethane footbed.
- EVA midsole with eTPU inserts.
- TARANTULA ANTI-SLIP® rubber outsole.



TARANTULA® ANTI-SLIP
rubber outsole.



CSA GRADE 1 ALUMINUM TOE, COMPOSITE PLATE. ESR.

SIZES: 7-11,12,13,14,15,16,17

STYLE: 5ANDDK0-1117QC

DAKOTA
WORKPRO SERIES

**ATCP TRADITIONAL
OXFORD SHOE**

- Full grain leather upper.
- Polyester lining.
- Removable polyurethane footbed.
- Poured polyurethane welt midsole.
- Durable soft polyurethane outsole.



CSA GRADE 1 ALUMINUM TOE, COMPOSITE PLATE. ESR.

SIZES: 7-11,12,13,14,15,16,17

STYLE: 5ANDDK0-1119QC

DAKOTA
WORKPRO SERIES

**ATCP TRADITIONAL
OXFORD SHOE**

- Full grain leather upper.
- Polyester lining.
- Removable polyurethane footbed.
- Poured polyurethane welt midsole.
- Durable soft polyurethane outsole.



**BEST
SELLER!**



CSA GRADE 1 ALUMINUM TOE, COMPOSITE PLATE. ESR.

SIZES: 7-11,12,13,14

STYLE: 5ANDDK1-3830

DAKOTA
WORKPRO SERIES

STSP CANVAS LACE-UP STREET SPORT SHOE

- Canvas upper.
- Breathable mesh lining with FRESHTECH®.
- Removable Ortholite® footbed.
- EVA midsole.
- Rubber outsole.



CSA GRADE 1 STEEL TOE, STEEL PLATE. ESR.



SIZES: 7-11,12,13,14

STYLE: 5ANDDK1-3831

DAKOTA
WORKPRO SERIES

STSP CANVAS SLIP-ON STREET SPORT SHOE

- Canvas upper.
- Breathable mesh lining with FRESHTECH®.
- Removable Ortholite® footbed.
- EVA midsole.
- Rubber outsole.



CSA GRADE 1 STEEL TOE, STEEL PLATE. ESR.



SIZES: 7-11,12,13,14

STYLE: 5ANDDK0-3819

DAKOTA
WORKPRO SERIES

STSP SLIP-ON STREET SPORT SHOE

- Microfibre upper.
- Breathable mesh lining with FRESHTECH®.
- Removable polyurethane foam footbed.
- Cushioning EVA midsole.
- TARANTULA ANTI-SLIP® rubber outsole.



CSA GRADE 1 STEEL TOE, STEEL PLATE. ESR.

TARANTULA® ANTI-SLIP
rubber outsole.



SIZES: 7-11,12,13,14

STYLE: 5ANDDK0-3820

DAKOTA
WORKPRO SERIES

STSP LACE-UP STREET SPORT SHOE

- Microfibre upper.
- Breathable mesh lining with FRESHTECH®.
- Removable polyurethane foam footbed.
- Cushioning EVA midsole.
- TARANTULA ANTI-SLIP® rubber outsole.



TARANTULA® ANTI-SLIP
rubber outsole.



CSA GRADE 1 STEEL TOE, STEEL PLATE. ESR.

SIZES: 7-11,12,13,14,15

STYLE: HHS194002

From Helly Hansen Workwear, these safety shoes have aluminum toes and steel plates. They're constructed with mesh uppers that offer high abrasion resistance, and welded PU overlays provide added protection. These athletic-style work shoes feature Helly Hansen's C-Zone cushioning comfort midsoles and removable Ortholite® insoles for added support.



ATSP WELDED ATHLETIC SAFETY SHOE

- High abrasion mesh upper with welded polyurethane overlays for protection.
- Durable rubber toe guard.
- Removable Ortholite® footbed.
- C Zone compression molded EVA midsole.
- Rubber outsole.

EXCLUSIVELY AT
Mark's



CSA GRADE 1 ALUMINUM TOE, STEEL PLATE. ESR.

SIZES: 7-11,12,13,14,15

STYLE: HHS194003



ATSP KNIT ATHLETIC SAFETY SHOE

- Knit upper with welded TPU overlays for protection.
- Durable TPU toe guard.
- Removable Ortholite® footbed.
- C Zone compression molded EVA midsole.
- Rubber outsole.

EXCLUSIVELY AT
Mark's



CSA GRADE 1 ALUMINUM TOE, STEEL PLATE. ESR.



SIZES: 7-11,12,13,14

STYLE: HHF204040



CTSP EXTRALIGHT ATHLETIC SHOE

- Lightweight, breathable mesh upper with TPU welded reinforcements.
- Breathable air mesh lining.
- Removable footbed.
- Rubber outsole.

EXCLUSIVELY AT
Mark's



CSA GRADE 1 COMPOSITE TOE, STEEL PLATE. ESR.



SIZES: 7-11,12,13

STYLE: HHS214004



CTCP WATERPROOF LEATHER OXFORD

- HELLY TECH® Performance waterproof leather upper.
- Moisture wicking air mesh lining.
- Removable comfort footbed.
- EVA midsole.
- Helly Grip rubber outsole.

**BEST
SELLER!**

Helly Grip
rubber outsole.



CSA GRADE 1 COMPOSITE TOE, COMPOSITE PLATE. ESR.



SIZES: 7,8-11,12,13

STYLE: 108008BLL

TERRA

"SPIDER X" CTCP SAFETY SHOE

- Full grain leather and suede upper.
- Moisture wicking lining with CLEANFEET® odour control.
- Removable polyurethane footbed.
- Direct injected single density polyurethane midsole/outsole.
- Metal Free.



CSA GRADE 1 COMPOSITE TOE, COMPOSITE PLATE. ESR.



SIZES: 7-11,12,13

STYLE: P721642

Designed in a low-cut hiking shoe style, these Caterpillar safety shoes feature composite toes and plates. They're made of full-grain leather with raised heels and moulded heel counters. Mesh linings add breathable comfort while dual-density EVA midsoles add support. These men's safety shoes feature slip-resistant rubber outsoles and are metal free.

CAT

METAL FREE STREAMLINE CTCP LEATHER SHOE

- Full grain leather upper.
- Molded heel counter.
- Nylon mesh lining.
- Dual density EVA midsole.
- Slip resistant rubber outsole.



CSA GRADE 1 COMPOSITE TOE, COMPOSITE PLATE. ESR.

Slip Resistant
rubber outsole.



SIZES: 7-11,12,13

STYLE: P724589



ATCP "SPRINT" TEXTILE ATHLETIC SHOE

- Leather and mesh upper.
- Nylon mesh lining.
- Removable footbed.
- EVA midsole.
- Slip resistant rubber outsole.



Slip Resistant rubber outsole.



CSA GRADE 1 ALUMINUM TOE, COMPOSITE PLATE. ESR.

SIZES: 7-11,12,13

STYLE: P724586



ATCP "SPRINT" ATHLETIC SHOE

- Suede upper.
- Breathable mesh lining.
- Removable mesh and NXT footbed.
- EASE comfort midsole.
- Slip resistant rubber outsole.



Slip Resistant rubber outsole.



CSA GRADE 1 ALUMINUM TOE, COMPOSITE PLATE. ESR.

SIZES: 7-11,12,13,14,15

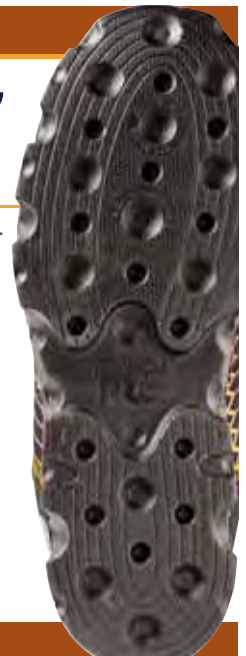
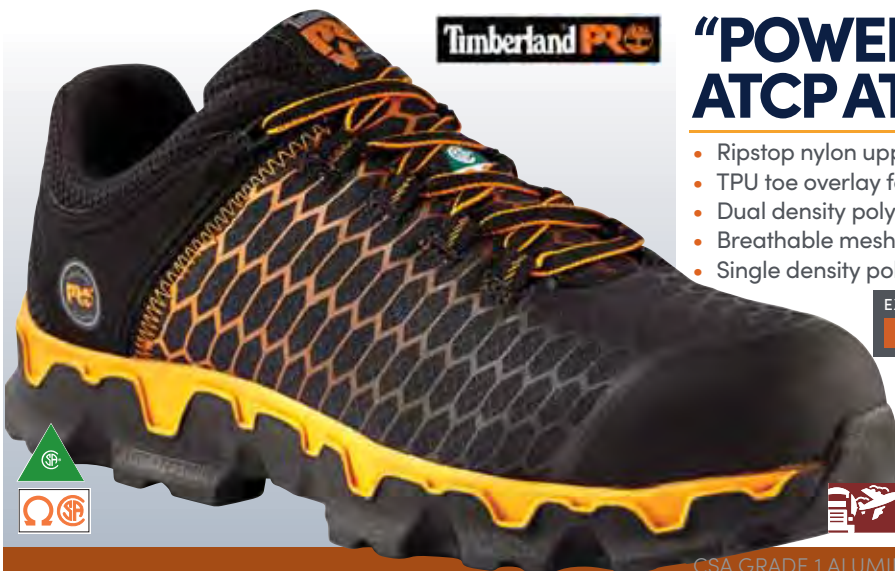
STYLE: TBOA1RV3001



"POWERTRAIN SPORT" ATCP ATHLETIC SHOE

- Ripstop nylon upper with abrasion resistant screen-print.
- TPU toe overlay for added durability and protection.
- Dual density polyurethane outsole.
- Breathable mesh lining with antimicrobial treatment.
- Single density polyurethane anti-fatigue footbed.

EXCLUSIVELY AT
Mark's



CSA GRADE 1 ALUMINUM TOE, COMPOSITE PLATE. ESR.

SIZES: 7-11,12,13,14,15

STYLE: TB0A1GVQ001



"POWERTRAIN SPORT" ATCP ATHLETIC SHOE

- Ripstop nylon upper.
- Mesh lining with anti-microbial treatment.
- Dual density polyurethane outsole.
- Single density polyurethane anti-fatigue footbed.

EXCLUSIVELY AT

Mark's



CSA GRADE 1 ALUMINUM TOE, COMPOSITE PLATE. ESR.

SIZES: 7-11,12,13,14,15

STYLE: TB0A21SS001

Built for safety and comfort, these Timberland PRO Reaxion shoes feature an Aerocore™ midsole energy system for improved cushioning along with anti-fatigue insoles. Safety components include composite toes and puncture-resistant composite plates. They are also electric shock resistant.



METAL FREE "REAXION LOW" CTCP SHOE

- Leather and nylon upper.
- Mesh lining with anti-microbial treatment.
- Removable anti-fatigue polyurethane footbed.
- TPU wrapped Aerocore™ midsole.
- All weather TPU outsole.

EXCLUSIVELY AT

Mark's



CSA GRADE 1 COMPOSITE TOE, COMPOSITE PLATE. ESR.

SIZES: 7-11,12,13,14,15

STYLE: TB0A1ZU001



ATCP "POWERTRAIN" MID-CUT ATHLETIC

- Synthetic microfiber textile upper.
- Mesh lining with anti-microbial treatment.
- Single density polyurethane anti-fatigue footbed.
- Dual density polyurethane outsole.



CSA GRADE 1 ALUMINUM TOE, COMPOSITE PLATE. ESR.



SIZES: 7-11,12,13,14,15

STYLE: TB0A29C6001



METAL FREE "RADIUS" CTCP ATHLETIC SHOE

- Breathable, durable mesh upper with abrasion resistant reinforcements.
- Breathable, moisture wicking lining.
- Removable polyurethane footbed.
- Lightweight HoverSpring foam midsole.
- Rubber outsole.
- Asymmetrical composite safety toe.



CSA GRADE 1 COMPOSITE TOE, COMPOSITE PLATE. ESR.



SIZES: 7-11,12,13,14,15

STYLE: TB0A21RU001



"REAXION MID" CTCP WATERPROOF SHOE

- Full grain leather upper.
- Mesh lining with anti-microbial treatment.
- Waterproof membrane.
- Removable anti-fatigue polyurethane footbed.
- TPU Wrapped Aerocore™ midsole.
- Luggy rubber outsole.

- METAL FREE.

EXCLUSIVELY AT
Mark's



CSA GRADE 1 COMPOSITE TOE, COMPOSITE PLATE. ESR.



SIZES: 7-12,13,14 STYLE: J17541



"FULL BENCH SUPERLITE" ATCP ATHLETIC SHOE

- Mesh and synthetic upper.
- Breathable mesh lining.
- Removable footbed.
- EVA midsole.
- Oil and slip resistant rubber outsole.
- METAL FREE.



CSA GRADE 1 ALUMINUM TOE, COMPOSITE PLATE. ESR.

Slip Resistant rubber outsole.



SIZES: 7-12,13,14,15 STYLE: 1024610

From Keen Utility, these Vista Energy XT work shoes feature the brand's proven energy return Re.GEN® midsole. This is an all-new safety shoe that still provides all day comfort thanks to its lightweight, one-piece, 3D printed seamless upper. Multiple Keen technologies contribute to a sound, supportive work shoe with CSA Grade 1 compliant composite toes and plates.



"VISTA ENERGY XT" CTCP SHOE

- Welded synthetic upper.
- Breathable and moisture wicking mesh lining.
- Removable polyurethane footbed.
- KEEN.ReGen® multi-density midsole.
- Rubber outsole.
- KONNECTFIT® heel-capture system.



CSA GRADE 1 COMPOSITE TOE, COMPOSITE PLATE. ESR.



SIZES: 7-11,12,13,14 **STYLE:** 1025691

With proven performance, these rugged leather work boots power you through your shift. Weatherproof protection featuring the KEEN.DRY waterproof, breathable membrane, a puncture-resistant midsole, and reflective safety features.



“RED HOOK” METAL FREE CTCP WATERPROOF MID-CUT SHOE

- Waterproof leather upper.
- Breathable mesh lining.
- KEEN.DRY® waterproof, breathable membrane.
- Removable metatomical polyurethane footbed.
- KEEN.ReGen® multi-density midsole.
- Rubber outsole.



CSA GRADE 1 COMPOSITE TOE, COMPOSITE PLATE. ESR.



SIZES: 4,5-11,12,13,14 **STYLE:** 10-501

ROYER STCP LEATHER WORK SHOE

- Full grain leather upper.
- Mesh lining.
- Leather and EVA footbed.
- EVA midsole.
- Oil resistant rubber outsole.



CSA GRADE 1 STEEL TOE, COMPOSITE PLATE. ESR.



ANTI-SLIP FOOTWEAR



SIZES: 7-11,12,13,14

STYLE: 5ANDDK0-3025

DAKOTA
WORKPRO SERIES

NON-SAFETY ANTI-SLIP SLIP-ON SHOE

- Microfibre and polyurethane upper.
- Breathable mesh lining with FRESHTECH.
- Removable EVA footbed.
- Cushioning EVA midsole.
- TARANTULA ANTI-SLIP rubber outsole.



TARANTULA® ANTI-SLIP
rubber outsole.



NON-SAFETY.

SIZES: 7-11,12,13,14

STYLE: 5ANDDK0-3026

DAKOTA
WORKPRO SERIES

NON-SAFETY ANTI-SLIP LACE-UP SHOE

- Microfibre and polyurethane upper.
- Breathable mesh lining with FRESHTECH.
- Removable EVA footbed.
- Cushioning EVA midsole.
- TARANTULA ANTI-SLIP rubber outsole.



TARANTULA® ANTI-SLIP
rubber outsole.



NON-SAFETY.

SIZES: 7-11,12,13,14

STYLE: 5ANDDK0-3027

DAKOTA
WORKPRO SERIES

NON-SAFETY ANTI-SLIP SKATE SHOE

- Microfibre and polyurethane upper.
- Breathable mesh lining with FRESHTECH.
- Removable EVA footbed.
- Cushioning EVA midsole.
- TARANTULA ANTI-SLIP rubber outsole.



TARANTULA® ANTI-SLIP
rubber outsole.



NON-SAFETY

SIZES: 7-11,12,13,14

STYLE: 5ANDDK0-3020

DAKOTA
WORKPRO SERIES

STSP ANTI-SLIP SLIP-ON SHOE

- Microfibre and polyurethane upper.
- Breathable mesh lining with FRESHTECH®.
- Removable EVA footbed.
- Cushioning EVA midsole.
- TARANTULA ANTI-SLIP® rubber outsole.



CSA GRADE 1 STEEL TOE, STEEL PLATE. ESR.

TARANTULA® ANTI-SLIP
rubber outsole.



SIZES: 7-11,12,13,14

STYLE: 5ANDDK0-3023

When safety shoes are required in your workplace, our Dakota Oxford design is a great choice. The shoes have steel toes and puncture-resistant steel plates and they are resistant to electric shock. Comfort features include cushioned midsoles and our odour-inhibiting FRESHTECH® treatment. TARANTULA ANTI-SLIP® outsoles add safety on slick floors.

DAKOTA
WORKPRO SERIES

STSP ANTI-SLIP LACE-UP OXFORD

- Microfibre and polyurethane upper.
- Breathable mesh lining with FRESHTECH®.
- Removable EVA footbed.
- Cushioning EVA midsole.
- TARANTULA ANTI-SLIP® rubber outsole.



CSA GRADE 1 STEEL TOE, STEEL PLATE. ESR.

TARANTULA® ANTI-SLIP
rubber outsole.



SIZES: 7-11,12,13,14 **STYLE:** 5ANDDK0-3021

From Dakota, these safety shoes have steel toes and puncture-resistant steel plates. They're also resistant to electric shock. These men's shoes feature FRESHTECH® technology in the linings, a safe and invisible antimicrobial treatment that is applied to our footwear. It inhibits the growth of fungi, mold and mildew, in addition to odour-causing bacteria. TARANTULA ANTI-SLIP® rubber outsoles reduce the likelihood that you'll slip and fall on wet and slick surfaces.

DAKOTA

WORKPRO SERIES

STSP ANTI-SLIP LACE-UP SHOE

- Microfibre and polyurethane upper.
- Breathable mesh lining with FRESHTECH.
- Removable EVA footbed.
- Cushioning EVA midsole.
- TARANTULA ANTI-SLIP rubber outsole.



TARANTULA® ANTI-SLIP rubber outsole.



CSA GRADE 1 STEEL TOE, STEEL PLATE. ESR.

SIZES: 7-11,12,13,14 **STYLE:** 99999068

SKECHERS
WORK

ATSP LACE-UP ATHLETIC SHOE

- Textile mesh upper with synthetic overlays.
- Soft mesh fabric lining.
- Cushioning EVA midsole.
- Removable air-cooled memory foam footbed.
- Slip resistant rubber outsole.

EXCLUSIVELY AT
Mark's



Slip Resistant rubber outsole.



CSA GRADE 1 ALUMINUM TOE, STEEL PLATE. ESR.

SIZES: 7-11,12,13,14

STYLE: 99999066

SKECHERS
WORK

STCP ANTI-SLIP SLIP-ON SHOE

- Action leather and synthetic upper.
- Soft mesh fabric lining.
- Cushioning EVA midsole.
- Removable air-cooled memory foam footbed.
- Slip resistant rubber outsole.

EXCLUSIVELY AT
Mark's

Slip Resistant
rubber outsole.



CSA GRADE 1 STEEL TOE, COMPOSITE PLATE. ESR.



SIZES: 7-11,12,13,14

STYLE: 99999110

A sturdy shoe to withstand the rigours of the workday, this Skechers design has steel toes and puncture-resistant composite plates. The leather design is built for comfort with cushioned midsoles and Air Cooled Memory Foam insoles. Slip-resistant rubber outsoles add traction in areas that are prone to moisture and grease.

SKECHERS
WORK

STCP BROWN SAFETY SHOE

- Leather and textile upper.
- Soft mesh fabric lining.
- Removable air-cooled memory foam footbed.
- Cushioning EVA midsole.
- Slip resistant rubber outsole.

EXCLUSIVELY AT
Mark's

Slip Resistant
rubber outsole.



CSA GRADE 1 STEEL TOE, COMPOSITE PLATE. ESR.



SIZES: 7-11,12,13,14

STYLE: 99999070

SKECHERS
WORK

STSP SKATE SHOE

- Action leather upper.
- Soft mesh fabric lining.
- Removable air-cooled memory foam footbed.
- Cushioning EVA midsole.
- Slip resistant rubber outsole.

EXCLUSIVELY AT
Mark's

Slip Resistant
rubber outsole.

CSA GRADE 1 STEEL TOE, STEEL PLATE. ESR.

SIZES: 7-11,12,13,14

STYLE: 99999071

SKECHERS
WORK

STSP SKATE SHOE

- Action leather and suede upper.
- Soft mesh fabric lining.
- Removable air-cooled memory foam footbed.
- Cushioning EVA midsole.
- Slip resistant rubber outsole.

EXCLUSIVELY AT
Mark's

Slip Resistant
rubber outsole.

CSA GRADE 1 STEEL TOE, STEEL PLATE. ESR.

SIZES: 7-11,12,13,14

STYLE: 77A77068

SKECHERS
WORK

ATSP SLIP RESISTANT ATHLETIC SHOE

- Leather and synthetic upper.
- Soft mesh fabric lining.
- Removable air-cooled memory foam footbed.
- Shock absorbing EVA midsole.
- Slip resistant rubber outsole.
- Static dissipative.

EXCLUSIVELY AT
Mark's

Slip Resistant
rubber outsole.

CSA GRADE 1 ALUMINUM TOE, STEEL PLATE. ESR.

STATIC DISSIPATIVE FOOTWEAR



SIZES: 7-11,12,13,14,15

STYLE: 5ANDDK9-3200

DAKOTA
WORKPRO SERIES

ESD ALUMINUM TOE LACE-UP LEATHER SHOE

- Leather upper.
- Breathable lining with FRESHTECH.
- Removable contoured footbed.
- Compression molded EVA midsole.
 - Rubber outsole.
 - Static dissipative.



ESD. ALUMINUM TOE.



SIZES: 7-11,12,13,14,15

STYLE: 5ANDDK9-3201

DAKOTA
WORKPRO SERIES

ESD ALUMINUM TOE SLIP-ON LEATHER SHOE

- Leather upper.
- Breathable lining with FRESHTECH.
- Removable contoured footbed.
- Compression molded EVA midsole.
 - Rubber outsole.
 - Static dissipative.



ESD. ALUMINUM TOE.



SIZES: 7-11,12,13,14,15

STYLE: TB0A1VDY001

Timberland PRO

ESD ALUMINUM TOE ATHLETIC SHOE

- Ripstop nylon upper with abrasion resistant screenprint.
- TPU toe overlay.
- Breathable mesh lining with antimicrobial treatment.
- Removable single density polyurethane footbed.
 - Dual density polyurethane outsole.
 - Static dissipative.



ESD. ALUMINUM TOE.



WET WEATHER FOOTWEAR



SIZES: 7-13 Full Sizes

STYLE: 5ANEAG2-9600



AGGRESSOR

**BEST
SELLER!**

NST INSULATED WET WEATHER BOOT

- 100% waterproof molded TPO upper.
 - Nylon cuff with drawstring keeps moisture out.
 - Long wearing, self-cleaning outsole.
 - Wool blend liner is tested to a true comfort rating of -20 to -30° C.
- LINER AVAILABLE - 5ANFAG3-01LNR



NON-SAFETY.

SIZES: 7-13 Full Sizes

STYLE: 5ANEAG2-9500



AGGRESSOR

**BEST
SELLER!**

STSP INSULATED WET WEATHER BOOT

- 100% waterproof molded TPO upper.
 - Nylon cuff with drawstring keeps moisture out.
 - Wool blend liner is tested to a true comfort level of -20 to -30° C.
 - Long wearing, self-cleaning outsole.
- LINER AVAILABLE - 5ANFAG3-01LNR



CSA GRADE 1 STEEL TOE, STEEL PLATE. ESR.

SIZES: 7-13 Full Sizes

STYLE: 5ANEDK5-9860



DAKOTA
WORKPRO SERIES

NST SYNTROL PREMIUM INJECTED BOOT

- TPR upper.
- Unlined.
- Premium poured polyurethane footbed.
- TPR midsole.
- TPR outsole.



NON-SAFETY.



SIZES: 7-13 Full Sizes

STYLE: 5ANEDK5-9850

DAKOTA
WORKPRO SERIES

STSP SYNTROL PREMIUM INJECTED BOOT

- TPR upper.
- Unlined.
- Poured polyurethane footbed.
- TPR midsole/outsole.



CSA GRADE 1 STEEL TOE, STEEL PLATE. ESR.



SIZES: 5-15 Full Sizes

STYLE: HHS214011

Ideal for wet work facilities or outdoor work during inclement weather. These Helly Hansen Workwear PU boots are lined for comfort and feature removable PU insoles. The lightweight outsole is heavily lugged for improved traction.



NON-SAFETY PU BOOT

- Waterproof injected polyurethane upper.
- Nylon lining.
- Removable polyurethane footbed.
- Lightweight injected polyurethane outsole

EXCLUSIVELY AT
Mark's



NON-SAFETY.



SIZES: 7-14 Full Sizes

STYLE: HHS214012



STSP POLYURETHANE WET WEATHER BOOT

- Waterproof injected polyurethane upper.
- Nylon lining.
- Removable polyurethane footbed.
- Lightweight injected polyurethane outsole.

EXCLUSIVELY AT

Mark's



CSA GRADE 1 STEEL TOE, STEEL PLATE. ESR.



SIZES: 7-14 Full Sizes

STYLE: HHF196120



STSP POLYURETHANE WET WEATHER BOOT

- Long wearing polyurethane upper.
- Polyurethane footbed for added comfort.
- H/H Workwear rubber outsole provides high traction in wet environments.
- Waterproof.
- Tested to a true temperature rating of -20 to -30° C.

EXCLUSIVELY AT

Mark's

Slip Resistant
rubber outsole.



CSA GRADE 1 STEEL TOE, STEEL PLATE. ESR.



SIZES: 7-14 Full Sizes

STYLE: LICO-M001



"BLACKHAWK" NON-SAFETY WET WEATHER BOOT

- Lightweight TPU compound upper.
- Unlined.
- Removable comfort footbed.
- Self-cleaning outsole TPR outsole.



NON-SAFETY.



SIZES: 7-15 Full Sizes **STYLE:** LICO-MP01

When your job involves working in wet environments or mucking out animal stalls, these Baffin Blackhawk safety boots are an ideal choice. They offer an anti-fatigue component and comfortable insoles that can be removed if necessary. The rubber boots meet CSA Grade 1 requirements for toe and underfoot protection.



BAFFIN
POLAR PROVEN

"BLACKHAWK" STSP WET WEATHER BOOT

- Lightweight TPU compound upper.
- Unlined.
- Removable comfort footbed.
- Self-cleaning outsole TPR outsole.



CSA GRADE 1 STEEL TOE, STEEL PLATE. ESR.

SIZES: 6-14 Full Sizes **STYLE:** 8564



BAFFIN
POLAR PROVEN

STSP FELT LINED RUBBER BOOT

- One piece TR upper.
- Wool blend liner.
- Long wearing self-cleaning outsole.



CSA GRADE 1 STEEL TOE, STEEL PLATE. ESR.

SIZES: 7-14 Full Sizes

STYLE: 9699



STSP "MAXIMUM" OARPRENE BOOT

- Molded seamless Oarprene upper.
- Generous wider fit.
- Comfort crafted footbed.
- Gelflex fatigue resistant midsole.
- Slip resistant self-cleaning outsole.

Slip Resistant
rubber outsole.



CSA GRADE 1 STEEL TOE, STEEL PLATE. ESR.

SIZES: 6-10 Full Sizes

STYLE: EC02A33

Fully compliant with CSA standards for toe and sole protection, these Dunlop waterproof, insulated boots are designed for workers exposed to moisture-prone and cold weather worksites. These men's safety boots have shock and energy-absorbing heels and Vibram XS rubber outsoles for slip-resistance and oil-resistance. The specially-designed toe area improves grip and ensures a safe landing on every footfall.



PUROFORT+ "EXPANDER" STSP VIBRAM SOLE BOOT

- Polyurethane upper.
- Red Dunlop branded polyurethane lining.
- Polyurethane midsole.
- Vibram® rubber outsole.

Slip Resistant
rubber outsole.



CSA GRADE 1 STEEL TOE, STEEL PLATE. ESR.

SIZES: 5-14 Full Sizes

STYLE: NE68A93



CTCP "SNUGBOOT" SD WET WEATHER BOOT

- Purotex breathable, waterproof upper.
- Polyurethane shell.
- Energy absorption in heel.
- Slip resistant cleated rubber outsole.
- Static dissipative.

Slip Resistant
rubber outsole.



CSA GRADE 1 COMPOSITE TOE, COMPOSITE PLATE. ESR.



SIZES: 8-15 Full-no 12

STYLE: PB661841MWCSA



STSP POLYURETHANE COLD WEATHER BOOT

- Lightweight, long wearing polyurethane upper.
- Thermo+ extreme cold weather lining.
- Dunlop polyurethane footbed.
- Polyurethane outsole provides high traction in wet environments.
- Static dissipative.



CSA GRADE 1 STEEL TOE, STEEL PLATE. ESR.



SIZES: 6-15 Full-no 12

STYLE: E902033



"EXPLORER" STSP VIBRAM PU WET WEATHER BOOT

- Flexible Purofort upper.
- Dunlop branded red welded lining.
- Premium footbed.
- Vibram® Fire & Ice outsole

Vibram® Fire & Ice
rubber outsole.



CSA GRADE 1 STEEL TOE, STEEL PLATE. ESR.



SIZES: 7-14 Full Sizes

STYLE: 5ANECH1-7000

CHINOOK

NON-SAFETY PVC WET WEATHER BOOT

- Eco-friendly construction.
- Made from recycled material.
- Seamless waterproof construction.
- Durable multi-directional lug outsole.



NON-SAFETY.



SIZES: 6-17 Full

STYLE: A1305B-11



LOW-CUT WIDE FIT OVERSHOE

- Rubber upper.
- Extra wide opening.
- Extra wide fit.



NON-SAFETY.



SIZES: 6-15 Full

STYLE: 3186-11A



SINGLE STRAP WORK BOOT OVERSHOE

- Rubber upper.
- Unlined.
- Rubber outsole.



NON-SAFETY.



WINTER FOOTWEAR



SIZES: 7-14 Full

STYLE: 5ANFAGW0-8910

AGGRESSOR

STSP TRANSITIONAL WINTER WORK BOOT

- Polyurethane Nubuck upper.
- DRI-TEC® lining with 200g T-MAX® insulation.
- Flat molded shell.
- Rubber outsole.



CSA GRADE 1 STEEL TOE, STEEL PLATE. ESR.



SIZES: 7-14 Full

STYLE: 5ANFDKW0-8907

DAKOTA
WORKPRO SERIES

Ranked by Toronto
Rehabilitation Institute as a
top slip-resistant
winter boot.
RateMyTreads.com



"8907" TRANSITIONAL CTCP WINTER BOOT

- Action leather upper.
- Mesh lining with 400g T-MAX® insulation.
- Removable EVA footbed.
- ICEFX® rubber outsole.
- Tested to a true temperature rating of -40 to -50° C.



CSA GRADE 1 COMPOSITE TOE, COMPOSITE PLATE. ESR.

TARANTULA® ANTI-SLIP
rubber outsole.



SIZES: 7-14 Full

STYLE: 5ANFDKW7-8901

DAKOTA
WORKPRO SERIES

Ranked by Toronto
Rehabilitation Institute as a
top slip-resistant
winter boot.
RateMyTreads.com



"8901" TRANSITIONAL CTCP HD3 WINTER BOOT

- Diesel and oil resistant waterproof full grain leather upper.
- 400g T-MAX® insulation.
- Removable liner system.
- TPU DURATOE® guard.
- HYPER-DRI HD3 waterproof, breathable membrane.
- ICEFX® rubber outsole.
- Tested to a true temperature rating of -40 to -50° C.

LINER AVAILABLE 5ANF7-LNR-8901



CSA GRADE 1 COMPOSITE TOE, COMPOSITE PLATE. ESR.

TARANTULA® ANTI-SLIP
rubber outsole.



SIZES: 7-14 Full

STYLE: 5ANFDK8-8911

DAKOTA WORKPRO SERIES

Ranked by Toronto
Rehabilitation Institute as a
top slip-resistant
winter boot.
RateMyTreads.com



THERMALECTRIC HEATED CTCP TRANSITIONAL BOOT

- Waterproof action leather upper.
- Mesh lining with 400g T-MAX® insulation.
- THERMALECTRIC® heating technology.
- Removable EVA footbed with Aerogel.
- Rubber outsole with Green Diamond® technology.

TARANTULA® ANTI-SLIP
rubber outsole.

CSA GRADE 1 COMPOSITE TOE, COMPOSITE PLATE. ESR.

SIZES: 7-14 Full

STYLE: 5ANFDKW8-8912

Our Dakota men's work boots feature outsoles with TARANTULA® Traction on Demand technology, providing maximum grip performance on icy surfaces. They're equipped with our HYPER-DRI® HD3 waterproof, breathable membranes to keep your feet dry and FRESHTECH® antimicrobial technology to keep odours at bay. These work boots meet CSA Grade 1 safety standards with composite toes and plates and puncture resistance.

DAKOTA WORKPRO SERIES

TRACTION ON DEMAND CTCP WINTER BOOT

- High abrasion Assems nylon upper.
- Mesh lining with 400g T-MAX® insulation.
- HYPER-DRI® HD3 waterproof, breathable membrane.
- Removable T-MAX® footbed with Aerogel.
- Poured polyurethane midsole.
- Rubber outsole with TARANTULA® Traction On Demand technology.

TARANTULA® ANTI-SLIP
rubber outsole.

CSA GRADE 1 COMPOSITE TOE, COMPOSITE PLATE. ESR.

SIZES: 7-14 Full **STYLE:** 5ANFDKW8-8530

Fitted with Propac removable felt liners, these Dakota work boots are built to protect your feet in extreme cold environments. They feature our T-MAX® light and warm insulation. The boots meet CSA Grade 1 standards with steel toes and plates which are electric shock and puncture resistant. Stoppered drawcords in the topline help keep debris and moisture out and tough ICEFX rubber outsoles provide sound footing on various surfaces.

DAKOTA

WORKPRO SERIES

"8530" STSP FELT PACK WINTER BOOT

- Textile upper.
- Removable liner with 200g T-MAX® insulation.
- Lightweight EVA shell.
- ICEFX rubber outsole.
- Tested to a true temperature rating of -50 to -60° C.

LINER AVAILABLE - LNR-8530DWG



TARANTULA® ANTI-SLIP
rubber outsole.



CSA GRADE 1 STEEL TOE, STEEL PLATE. ESR.

SIZES: 7-14 Full **STYLE:** 5ANFDKW8-8527

DAKOTA

WORKPRO SERIES

Ranked by Toronto
Rehabilitation Institute as a
top slip-resistant
winter boot
RateMyTreads.com



"8527" STSP LEATHER FELT PACK WINTER BOOT

- Waterproof leather upper.
- Removable liner with 200g T-MAX® insulation.
- Lightweight EVA shell.
- ICEFX rubber outsole with Green Diamond technology.
- Tested to a true temperature rating of -40 to -50° C.



TARANTULA® ANTI-SLIP
rubber outsole.



CSA GRADE 1 STEEL TOE, STEEL PLATE. ESR.

SIZES: 7-15 Full

STYLE: 5ANFDKW6-8524

DAKOTA WORKPRO SERIES

Ranked by Toronto
Rehabilitation Institute as a
top slip-resistant
winter boot.
RateMyTreads.com



"8524" CTCP SYNTROL FELT PACK WINTER BOOT

- Oil, diesel and chemical resistant Syntrol upper.
- Oil resistant polyurethane shell.
- Superior removable liner system with 400g T-MAX® insulation.
- 6mm frost plug helps keep feet dry.
- Oil resistant midsole.
- Oil and diesel resistant ICEFX outsole.
- Tested to a true temperature rating of -50 to -60° C.

LINER AVAILABLE - 5ANF-LNR-8524



TARANTULA® ANTI-SLIP
rubber outsole.

CSA GRADE 1 COMPOSITE TOE, COMPOSITE PLATE. ESR.

SIZES: 7-15 Full

STYLE: HHF186118

Fitted with removable liners, these Helly Hansen Workwear boots are built to protect your feet in extreme conditions. They feature our T-MAX® light and warm insulation. The boots meet CSA Grade 1 standards with composite toes and plates which are electric shock and puncture resistant. Tough rubber outsoles with Green Diamond® technology provide superior non-slip properties when in contact with wet, oily and icy conditions.



CTCP WINTER BOOT

- Oil resistant fabric upper.
- Polyurethane shell.
- Removable liner with 200g T-MAX® insulation.
- Rubber outsole.
- Tested to a true temperature rating of -50 to -60° C.

LINER AVAILABLE - HHF19-LNR-6118

Ranked by Toronto
Rehabilitation Institute as a
top slip-resistant
winter boot.
RateMyTreads.com



TARANTULA® ANTI-SLIP
rubber outsole.

EXCLUSIVELY AT
Mark's

CSA GRADE 1 COMPOSITE TOE, COMPOSITE PLATE. ESR.

SIZES: 7-15 Full

STYLE: HHF146111



Ranked by Toronto Rehabilitation Institute as a top slip-resistant winter boot.
RateMyTreads.com

CTCP FELT PACK WINTER WORK BOOT

- HELCORE 3D carbon upper is oil, diesel and chemical resistant.
- Removable truForm liner for comfort, stability and thermal protection.
- Rubber outsole with ICEFX.
- 400g T-MAX® insulation.
- Seam sealed wapterproof polyurethane shell.
- Frost plug footbed.
- Tested to a true temperature rating of -40 to -50° C.

EXCLUSIVELY AT

Mark's

TARANTULA® ANTI-SLIP rubber outsole.



CSA GRADE 1 COMPOSITE TOE, COMPOSITE PLATE. ESR.



SIZES: 7-14 Full

STYLE: HHF196119



Ranked by Toronto Rehabilitation Institute as a top slip-resistant winter boot.
RateMyTreads.com

CTCP WINTER BOOT

- Abrasion resistant leather and nylon ripstop upper.
- HELLY TECH® Performance waterproof technology.
- EVA midsole.
- Removable EVE footbed with T-MAX® HEAT LINING.
- Removable liner with T-MAX insulation.
- ICEFX rubber outsole.

TARANTULA® ANTI-SLIP rubber outsole.



CSA GRADE 1 COMPOSITE TOE, COMPOSITE PLATE. ESR.



SIZES: 7-14 Full

STYLE: 915605



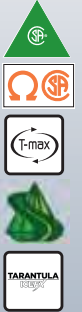
METAL FREE "CROSSBOW" CTCP TRANSITIONAL BOOT

- Full grain waterproof leather upper.
- Full polyurethane shell.
- Removable 4 layer liner system.
- High traction rubber outsole.

Slip Resistant rubber outsole.



CSA GRADE 1 COMPOSITE TOE, COMPOSITE PLATE. ESR.



WOMEN'S

8 INCH FOOTWEAR



SIZES: 5-11 (incl. half)

STYLE: 5BOAAG6-8500

AGGRESSOR

8" STSP WORK BOOT

- Buffalo leather upper.
- Polyurethane toe guard.
- Breathable mesh and foam lining.
- Removable one density footbed.
- Durable and lightweight polyurethane outsole.



CSA GRADE 1 STEEL TOE, COMPOSITE PLATE. ESR.

SIZES: 6-10,11

STYLE: 5BOADK1-8020

DAKOTA
WORKPRO SERIES

8" "8020" STSP WORK BOOT

- Buffalo leather upper.
- TPU DURATOE®.
- Breathable mesh lining with FRESHTECH®.
- Removable polyurethane footbed.
- Polyurethane/TPU outsole.
- Rubber outsole.



CSA GRADE 1 STEEL TOE, STEEL PLATE. ESR.

SIZES: 5,6-11

STYLE: 5BOADK0-8030

DAKOTA
WORKPRO SERIES

8" "8030" STSP WORK BOOT

- Full grain leather upper.
- DRI TEC with FRESHTECH® treated lining.
- 200g T-MAX® insulation.
- Removable polyurethane footbed.
- EVA midsole.
- TARANTULA® ANTI-SLIP rubber outsole.



CSA GRADE 1 STEEL TOE, STEEL PLATE. ESR.

TARANTULA® ANTI-SLIP
rubber outsole.

SIZES: 5,6-11

STYLE: 5BOADK4-8006

DAKOTA
WORKPRO SERIES

8" QUAD COMFORT STCP WORK BOOT

- Nubuck leather upper.
- Polyurethane DURATOE® guard.
- Cambrelle® lining with 200g T-MAX® insulation.
- Removable 4 density footbed.
- Direct injected polyurethane midsole.
- TARANTULA® ANTI-SLIP rubber outsole.

TARANTULA® ANTI-SLIP
rubber outsole.



CSA GRADE 1 STEEL TOE, COMPOSITE PLATE. ESR.

SIZES: 6-10,11

STYLE: 5BOADK9-8016

DAKOTA
WORKPRO SERIES

8" QUAD LITE STSP WORK BOOT

- Leather upper.
- Removable contoured footbed.
- Additional EVA comfort layer.
- Compression molded EVA midsole.
- TARANTULA® ANTI-SLIP rubber outsole.

TARANTULA® ANTI-SLIP
rubber outsole.



CSA GRADE 1 STEEL TOE, STEEL PLATE. ESR.

SIZES: 6-11 (incl. half)

STYLE: 5BOADK5-8112

DAKOTA
WORKPRO SERIES

8" INTERNAL METGUARD STCP WORK BOOT

- Full grain leather upper with side zipper.
- Internal metatarsal protection.
- Breathable and moisture wicking mesh lining.
- 200g T-MAX® insulation.
- Removable 4 density footbed.
- Injected polyurethane midsole.
- TARANTULA® ANTI-SLIP rubber outsole.

TARANTULA® ANTI-SLIP
rubber outsole.



CSA GRADE 1 STEEL TOE, COMPOSITE PLATE. ESR.

SIZES: 6-11 (incl. half)

STYLE: HHS202181W



8" "BERGEN" STCP WORK BOOT

- Waterproof leather upper.
- DRI-TEC® with FRESHTECH® treated lining.
- 200g T-MAX® insulation.
- HELLY TECH® waterproof membrane.
- Removable EVA footbed.
- EVA midsole.
- Rubber outsole.

EXCLUSIVELY AT

Mark's



CSA GRADE 1 STEEL TOE, COMPOSITE PLATE. ESR.

SIZES: 5-10,11

STYLE: P311182



8" "CLOVER" STSP WORK BOOT

- Full grain leather upper with knit collar.
- Nylon lining.
- EASE footbed.
- Molded EVA midsole.
- Rubber outsole.



CSA GRADE 1 STEEL TOE, STEEL PLATE. ESR.

SIZES: 5-10,11

STYLE: W75126



8" "CONDOR" WATERPROOF CTCP WORK BOOT

- Waterproof leather upper.
- Moisture wicking mesh lining.
- Removable dual density comfort cushion footbed.
- 200g Thinsulate™ insulation.
- Sculpted oil and slip resistant rubber outsole.

Slip Resistant
rubber outsole.



CSA GRADE 1 COMPOSITE TOE, COMPOSITE PLATE. ESR.

WOMEN'S

6 INCH FOOTWEAR



SIZES: 5,6-11

STYLE: 5BOBAG4-6500

AGGRESSOR

6" STSP WORK BOOT

- Buffalo leather upper.
- Polyurethane toe guard.
- Breathable mesh and foam lining.
- Removable one density footbed.
- Durable and lightweight polyurethane outsole.



CSA GRADE 1 STEEL TOE, STEEL PLATE. ESR.



SIZES: 6-10,11

STYLE: 5BOBDK1-6020

In tough buffalo leather, these women's work boots are built for safety and comfort. They're padded around the collar and tongue and have breathable mesh linings. Our FRESHTECH® odour protection technology provides all-day freshness.

DAKOTA

WORKPRO SERIES

6" "6020" STSP WORK BOOT

- Buffalo leather upper.
- TPU DURATOE.®
- Breathable mesh lining with FRESH TECH.®.
- Removable polyurethane footbed.
- Polyurethane/TPU outsole.
- Rubber outsole.



CSA GRADE 1 STEEL TOE, STEEL PLATE. ESR.



SIZES: 5,6-11 STYLE: 5BOBDK6-6006

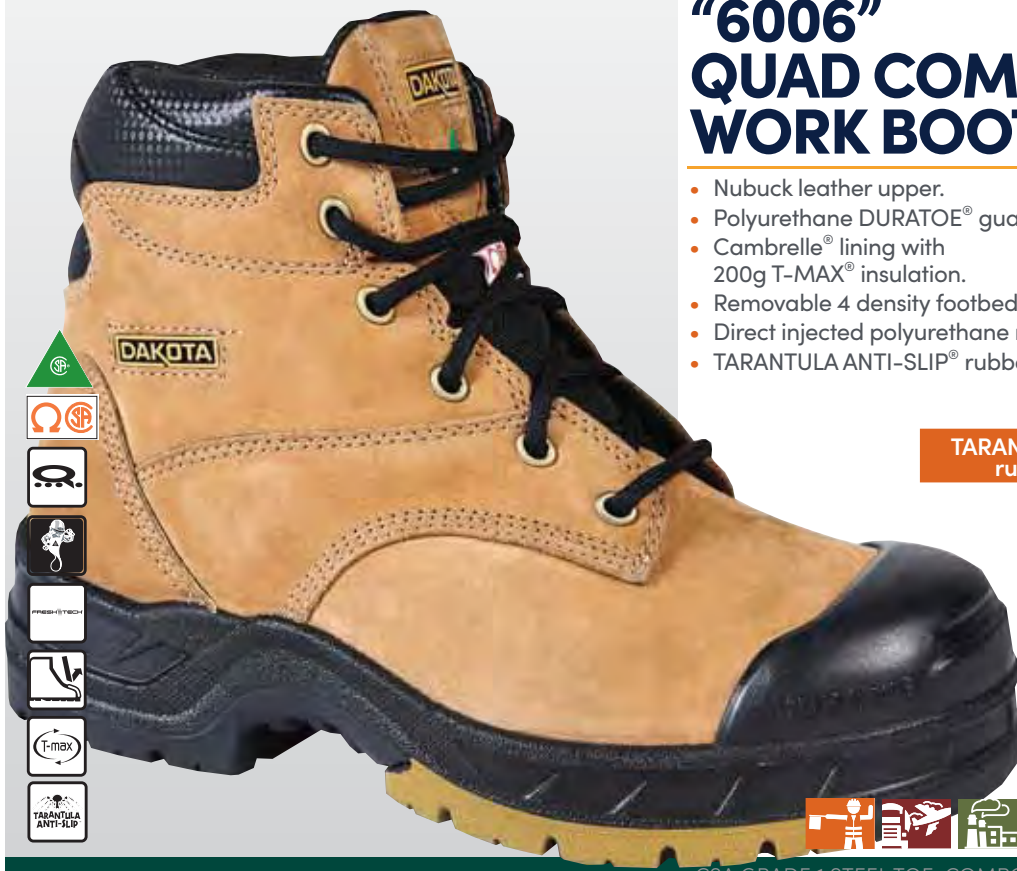
Protect your feet on the jobsite wearing these Dakota work boots equipped with light and warm T-MAX® insulation. CSA Grade 1 steel toes, comp plates and electric shock resistance protect your feet, while DURATOE® toe caps provide additional protection to the boots. TARANTULA ANTI-SLIP® outsoles are engineered to help prevent slips and falls, making them ideal for environments with various surface conditions.

DAKOTA

WORKPRO SERIES

6" STCP "6006" QUAD COMFORT WORK BOOT

- Nubuck leather upper.
- Polyurethane DURATOE® guard.
- Cambrelle® lining with 200g T-MAX® insulation.
- Removable 4 density footbed.
- Direct injected polyurethane midsole.
- TARANTULA ANTI-SLIP® rubber outsole.



TARANTULA® ANTI-SLIP
rubber outsole.



CSA GRADE 1 STEEL TOE, COMPOSITE PLATE. ESR.

SIZES: 6-10,11 STYLE: 5BOBDK5-6016

DAKOTA

WORKPRO SERIES

6" QUAD LITE STSP WORK BOOT

- Nubuck leather upper.
- Breathable mesh lining.
- Removable footbed.
- EVA midsole.
- TARANTULA ANTI-SLIP® rubber outsole.



TARANTULA® ANTI-SLIP
rubber outsole.



CSA GRADE 1 STEEL TOE, STEEL PLATE. ESR.

SIZES: 6-11 STYLE: HHS202160W



6" "BERGEN" WATERPROOF STCP WORK BOOT

- Waterproof leather upper.
- DRI-TEC® with FRESHTECH® treated lining.
- 200g T-MAX® insulation.
- HELLY TECH® waterproof membrane.
- Removable EVA footbed.
- EVA midsole. Rubber outsole.

EXCLUSIVELY AT
Mark's



CSA GRADE 1 STEEL TOE, COMPOSITE PLATE. ESR.



SIZES: 5-11 (incl. half) STYLE: HHF191061W

Tough and ready for long days on the jobsite, these Helly Hansen women's work boots meet CSA Grade 1 requirements for toe and underfoot protection. They also resist electric shock. The six-inch boots are fully insulated for cold weather conditions. They feature moisture-wicking linings and are treated to inhibit the growth of fungi, mold and mildew as well as odour-causing bacteria.



6" ATCP HIGH ABRASION WORK BOOT

- Lenzi abrasion resistant woven upper.
- DRI-TEC® with FRESHTECH® treated lining.
- 200g T-MAX® insulation.
- Removable EVA footbed.
- EVA midsole.
- Rubber outsole.



CSA GRADE 1 ALUMINUM TOE, COMPOSITE PLATE. ESR.

SIZES: 5-10 (incl. half)

STYLE: P310912

These women's CAT Abbey work boots are styled like Chelsea boots with all the required protective features you need on the job. They have steel toes, composite plates and electrical hazard protection. This design also includes slip-resistant outsoles that reduce the risk of slips and falls.



6" STCP "ABBEY" PULL ON WORK BOOT

- Nubuck leather upper.
- Molded heel counter.
- Nylon mesh lining.
- Lightweight EVA midsole.
- Rubber outsole.



Slip Resistant rubber outsole.



CSA GRADE 1 STEEL TOE, COMPOSITE PLATE. ESR.

SIZES: 5-10,11

STYLE: P311382



6" "EXCAVATOR SUPERLITE" CTCP WATERPROOF BOOT

- Waterproof Nubuck leather upper.
- Breathable nylon mesh lining with 200g Thinsulate™.
- Durable TPU toe guard.
- Cushioning polyurethane midsole.
- Extreme slip resistant rubber outsole



Slip Resistant rubber outsole.



CSA GRADE 1 COMPOSITE TOE, COMPOSITE PLATE. ESR.

SIZES: 5.5-10,11

STYLE: TB0A1Q6K001



6" "HIGHTOWER" ATSP WORK BOOT

- Full grain waterproof leather upper.
- Antimicrobial treated lining.
- Waterproof membrane.
- Removable anti-fatigue footbed.
- All weather TPU outsole.



CSA GRADE 1 ALUMINUM TOE, STEEL PLATE. ESR.



SIZES: 5.5-10,11

STYLE: TB0A1KJU214



6" "HIGHTOWER" ATCP WORK BOOT

- Full grain leather upper.
- Antimicrobial treated lining.
- Removable anti-fatigue footbed.
- All weather TPU outsole.



CSA GRADE 1 ALUMINUM TOE, COMPOSITE PLATE. ESR.

Slip Resistant
rubber outsole.



SIZES: 5-10,11

STYLE: 1022104



6" "SEATTLE" WATERPROOF ATCP WORK BOOT

- Waterproof leather upper.
- KEEN.DRY waterproof, breathable membrane.
- EVA midsole.
- Heat, oil and slip resistant rubber outsole.



CSA GRADE 1 ALUMINUM TOE, COMPOSITE PLATE. ESR.

Slip Resistant
rubber outsole.



WOMEN'S

HIKER FOOTWEAR



SIZES: 5-11 (incl. half)

STYLE: 5BOCAG9-2501

Built for comfort as well as on-the-job protection, these women's Aggressor hikers feature steel toes and plates. The shoes are waterproof and they're treated with FRESHTECH® to inhibit odour-causing bacteria. Padded collars protect the ankles and EVA underfoot adds valuable support.

AGGRESSOR

LOW-CUT STSP HIKING SHOE

- Polyurethane mesh upper.
- DRI-TEC with FRESHTECH® treated lining.
- Removable EVA footbed.
- EVA midsole.
- Rubber outsole.



CSA GRADE 1 STEEL TOE, STEEL PLATE. ESR.



SIZES: 5-11 (incl. half)

STYLE: 5BOCAG9-2502

AGGRESSOR

STSP MID-CUT SAFETY HIKING SHOE

- Textile and polyurethane upper.
- DRI-TEC with FRESHTECH® treated lining.
- Removable EVA footbed.
- EVA midsole.
- Rubber outsole.



CSA GRADE 1 STEEL TOE, STEEL PLATE. ESR.



SIZES: 6-10 (incl. half)

STYLE: 5BOCDK0-2007

DAKOTA **ATCP** WORKPRO SERIES **MID-CUT HIKER**

- Synthetic and breathable mesh upper.
- Breathable mesh lining.
- Removable footbed.
- EVA midsole.
- Added rubber heel and toe protection.
- TARANTULA ANTI-SLIP® rubber outsole.

TARANTULA® ANTI-SLIP
rubber outsole.



CSA GRADE 1 ALUMINUM TOE, COMPOSITE PLATE, ESR.

SIZES: 5-11 (incl. half)

STYLE: 5BOCDK0-2003

The flexible support of this low-cut safety hiker makes it an ideal choice for warehouse areas, distribution work, light manufacturing, retail stores and landscape workers. Made with a durable synthetic and breathable mesh upper, these hikers have midsole cushioning and insoles treated to keep your feet dry. Equipped with a lightweight aluminium toe and composite plate for safety on the job, this pair is electric shock resistant as well puncture resistant.

DAKOTA **ATCP** WORKPRO SERIES **LOW-CUT HIKER**

- Rubber, polyurethane and mesh upper.
- Breathable PK mesh lining.
- Lightweight and cushioning EVA midsole.
- Removable cushioned footbed.
- TARANTULA ANTI-SLIP® rubber outsole.

TARANTULA® ANTI-SLIP
rubber outsole.



CSA GRADE 1 ALUMINUM TOE, COMPOSITE PLATE, ESR.

SIZES: 5,6-11 **STYLE:** 5BOCDK8-2120

Offering steel toes and composite plates, these genuine suede safety boots are waterproof and breathable for all-weather comfort. They also feature breathable mesh linings along with our FRESHTECH® antimicrobial technology to keep your feet feeling dry and fresh during your shifts. The Dakota 2120 women's work boots have TARANTULA ANTI-SLIP® rubber outsoles that are designed to help prevent slips and falls.

DAKOTA

WORKPRO SERIES

WATERPROOF STCP HIKER

- Waterproof leather upper.
- Breathable mesh lining with FRESHTECH®.
- Polyurethane midsole.
- HYPER-DRI® HD3 waterproof membrane.
- TARANTULA ANTI-SLIP® rubber outsole.



TARANTULA® ANTI-SLIP
rubber outsole.

CSA GRADE 1 STEEL TOE, COMPOSITE PLATE. ESR.

SIZES: 6-11 (incl. half) **STYLE:** HHS181009W



ATCP LOW-CUT SAFETY HIKING SHOE

- High abrasion mesh upper with welded TPU overlays.
- Durable rubber toe bumper.
- Removable Ortholite® footbed.
- Compression molded EVA midsole.
- Rubber outsole.

EXCLUSIVELY AT
Mark's



CSA GRADE 1 ALUMINUM TOE, COMPOSITE PLATE. ESR.

SIZES: 6-11 (incl. half)

STYLE: HHS191010W



ATCP MID-CUT HIKER

- High abrasion mesh upper with welded TPU overlays.
- Durable rubber toe bumper.
- Removable Ortholite® footbed.
- Compression molded EVA midsole.
- Rubber outsole.

EXCLUSIVELY AT

Mark's



CSA GRADE 1 ALUMINUM TOE, COMPOSITE PLATE, ESR.



SIZES: 6-10 (incl. half)

STYLE: 305003DW

From Kodiak, the women's Journey hiker-style work boots are made of waterproof leather, protected with molded TPU heel guards and rubber toe guards. Fitted with composite toes and plates, they are electric shock resistant as well as puncture resistant. Designed for winter outdoor work, the boots have lightweight Thinsulate™ insulation. EVA midsoles add support and Kodiak® Ultimate rubber outsoles are slip and oil resistant. CSA-compliant safety features include composite toes and plates, electric shock resistance and puncture resistance.

KODIAK® CTCP "JOURNEY" WATERPROOF HIKER

- Waterproof, leather upper.
- TPU heel guard.
- Rubber toe guard.
- Breathable mesh lining with 200g Thinsulate™ insulation.
- Waterproof membrane.
- Removable EVA footbed.
- EVA midsole.
- Rubber outsole.

Slip Resistant
rubber outsole.



CSA GRADE 1 COMPOSITE TOE, COMPOSITE PLATE, ESR.



SIZES: 5-11 (incl. half)

STYLE: J17862

These women's work boots from Merrell are fully equipped to protect your feet while on the job. Regulation safety features include steel toes and plates and resistance to electric shock and puncture. Made of waterproof suede and mesh, the uppers have abrasion-resistant toe caps. The hiker-style work boot features built-in support factors including a contoured footbed, a shock-absorbing heel that adds stability and an arch shank that provides midfoot support. These boots have oil and slip-resistant rubber outsoles with M Select™ Grip for improved traction.



"WINDOC" WATERPROOF MID-CUT STSP HIKER

- Waterproof suede and mesh upper.
- Breathable mesh lining.
- Waterproof membrane.
- Removable EVA footbed.
- Lightweight and cushioning EVA midsole.
- Oil and slip resistant rubber outsole.

Slip Resistant rubber outsole.



CSA GRADE 1 STEEL TOE, STEEL PLATE. ESR.



SIZES: 5-11 (incl. half)

STYLE: J099354



"SIREN" ATCP WATERPROOF HIKER

- Waterproof Nubuck and breathable mesh upper.
- Breathable mesh lining.
- Waterproof membrane.
- Removable COMFORTBASE™ footbed.
- Lightweight and cushioning comfort base EVA midsole.
- Slip resistant rubber outsole.

Slip Resistant rubber outsole.



CSA GRADE 1 ALUMINUM TOE, COMPOSITE PLATE. ESR.



WOMEN'S

ATHLETIC FOOTWEAR



SIZES: 5-11 (incl. half)

STYLE: 5BODAG9-1501

AGGRESSOR

STSP ATHLETIC SHOE

- Textile upper.
- DRI-TEC® with FRESHTECH® treated lining.
- Removable EVA footbed.
- EVA midsole.
- Rubber pods in outsole.



CSA GRADE 1 STEEL TOE, STEEL PLATE. ESR.



SIZES: 5-11 (incl. half)

STYLE: 5BODDK8-1007

DAKOTA
WORKPRO SERIES

STSP LIGHTWEIGHT CANVAS SHOE

- Cotton canvas upper.
- Lightweight canvas lining with FRESHTECH® treatment.
- EVA midsole.
- Rubber outsole.



CSA GRADE 1 STEEL TOE, STEEL PLATE. ESR.



SIZES: 5-11 (incl. half)

STYLE: 5BODDK9-1008

DAKOTA
WORKPRO SERIES

LIGHTWEIGHT CANVAS STSP ATHLETIC SHOE

- Cotton canvas upper.
- Lightweight canvas lining with FRESHTECH® treatment.
- EVA midsole.
- Rubber outsole.



CSA GRADE 1 STEEL TOE, STEEL PLATE. ESR.



SIZES: 5-11 (incl. half)

STYLE: 5BODDK9-1009

DAKOTA
WORKPRO SERIES

LIGHTWEIGHT CANVAS STSP LACE-UP SHOE

- Cotton canvas upper.
- Lightweight canvas lining with FRESHTECH® treatment.
- EVA midsole.
- Rubber outsole.



CSA GRADE 1 STEEL TOE, STEEL PLATE. ESR.

SIZES: 6-10,11

STYLE: 5BODDK7-3602

Our Dakota athletic-style safety shoes are made of microfiber and mesh with nylon linings for breathability. They are equipped with our QUAD COMFORT® Lite technology that offers all the comfort of our regular version with less weight. These women's safety shoes have aluminum toes and composite plates, and they are electric shock resistant. Insoles are removable in favour of your own orthotics and TARANTULA ANTI-SLIP® outsoles help to prevent slips and falls.

DAKOTA
WORKPRO SERIES

ATSP QUAD LITE ATHLETIC SHOE

- Breathable Microfiber and mesh upper.
- Breathable nylon lining.
- Removable footbed.
- Cushioning EVA midsole.
- Lightweight TARANTULA ANTI-SLIP® rubber outsole.



TARANTULA® ANTI-SLIP
rubber outsole.



CSA GRADE 1 ALUMINUM TOE, STEEL PLATE. ESR.

SIZES: 6-10 (incl. half)

STYLE: HHS201006W



ATSP ATHLETIC SHOE

- Lightweight breathable mesh and polyurethane upper.
- Reinforced polyurethane welded toe and heel for additional protection.
- Breathable mesh lining.
- Removable moisture wicking Ortholite® footbed.
- Rubber outsole.

EXCLUSIVELY AT
Mark's



CSA GRADE 1 ALUMINUM TOE, STEEL PLATE. ESR.



SIZES: 5,6-10

STYLE: 308004BLK

KODIAK®

STCP "TAJA" LACE UP SHOE

- Stretchable action leather upper.
- Stretch nylon comfort lining.
- Removable Ortholite® footbed.
- Lightweight EVA flexible midsole.
- KODIAK® ultimate slip and oil resistant rubber outsole.

Slip Resistant
rubber outsole.



CSA GRADE 1 STEEL TOE, COMPOSITE PLATE. ESR.



SIZES: 5,6-10

STYLE: 308005BLK

KODIAK®

"BRITT" STCP SLIP-ON SHOE

- Stretchable action leather upper.
- Stretch nylon comfort lining.
- Removable Ortholite® footbed.
- Lightweight EVA flexible midsole.
- KODIAK® ultimate SR and oil resistant rubber outsole.



CSA GRADE 1 STEEL TOE, COMPOSITE PLATE. ESR.



SIZES: 5-10 (incl. half)

STYLE: P310493

CAT

"WOODWARD" STSP ATHLETIC SHOE

- Leather upper with nylon mesh inserts.
- Breathable nylon mesh lining.
- Removable Ease footbed.
- Molded EVA midsole.
- Extreme slip resistant rubber outsole.

Slip Resistant
rubber outsole.

CSA GRADE 1 STEEL TOE, STEEL PLATE. ESR.

SIZES: 5-10,11

STYLE: P311387

CAT

"SPRINT" ATCP LACE UP SHOE

- Mesh upper.
- Breathable nylon mesh lining.
- Removable footbed.
- Cushioning EASE midsole.
- Slip resistant rubber outsole.

Slip Resistant
rubber outsole.

CSA GRADE 1 ALUMINUM TOE, COMPOSITE PLATE. ESR.

SIZES: 5-10,11

STYLE: P311392

CAT

"BRITT" STCP SLIP-ON SHOE

- Mesh and coated leather support.
- Breathable nylon mesh lining.
- Removable footbed.
- Cushioning EASE midsole.
- Slip resistant rubber outsole.

Slip Resistant
rubber outsole.

CSA GRADE 1 ALUMINUM TOE, COMPOSITE PLATE. ESR.

SIZES: 5-10,10.5

STYLE: W207144

WOLVERINE

"BOLT DURASHOCKS" CTCP SHOE

- Breathable Stretch Mesh upper.
- Breathable, moisture wicking mesh lining.
- DuraSpring® polyurethane midsole.
- Removable DuraShocks® polyurethane footbed.
- Wolverine DuraShocks® rubber outsole.



CSA GRADE 1 COMPOSITE TOE, COMPOSITE PLATE. ESR.

SIZES: 5.5-10,11

STYLE: TB0A1RTM001

Timberland PRO

"POWERTRAIN SPORT" ATCP SHOE

- Ripstop nylon upper.
- TPU toe overlay for added durability and protection.
- Mesh lining with anti-microbial treatment.
- Single density polyurethane anti-fatigue footbed.
- Dual density polyurethane outsole.

EXCLUSIVELY AT
Mark's



CSA GRADE 1 ALUMINUM TOE, COMPOSITE PLATE. ESR.

SIZES: 5-11 (incl. half)

STYLE: J17548

MERRELL
WORK

"FULLBENCH" ATCP SUPERLITE SHOE

- Mesh and synthetic upper.
- Breathable mesh lining.
- EVA midsole.
- Removable COMFORTBASE® footbed.
- Rubber outsole.



CSA GRADE 1 ALUMINUM TOE, COMPOSITE PLATE. ESR.

WOMEN'S

ANTI-SLIP FOOTWEAR



SIZES: 5-11 (incl. half)

STYLE: 5BODDK0-3108

DAKOTA
WORKPRO SERIES

NON-SAFETY ANTI-SLIP SLIP-ON SHOE

- Microfibre and polyurethane upper.
- Breathable mesh lining with FRESHTECH®.
- Removable EVA footbed.
- Cushioning EVA midsole.
- TARANTULA ANTI-SLIP® rubber outsole.



TARANTULA® ANTI-SLIP
rubber outsole.



NON-SAFETY.

SIZES: 5-11 (incl. half)

STYLE: 5BODDK0-3106

These Dakota lace up non safety shoes have breathable linings and anti-microbial treatment keep your feet dry while reducing odour. The anti-slip outsoles on these safety shoes give you traction control in slippery areas, making them an ideal option for kitchen, maintenance and janitorial workers.

DAKOTA
WORKPRO SERIES

STSP ANTI-SLIP LACE-UP OXFORD

- Microfibre and polyurethane upper.
- Breathable mesh lining with FRESHTECH®.
- Removable EVA footbed.
- Cushioning EVA midsole.
- TARANTULA ANTI-SLIP® rubber outsole.



TARANTULA® ANTI-SLIP
rubber outsole.



NON-SAFETY.

SIZES: 5-11 (incl. half)

STYLE: 5BODDK0-3105

These Oxford-style safety shoes have CSA steel toes and puncture-resistant plates to protect the bottom of your feet. Breathable linings and anti-microbial treatment keep your feet dry while reducing odour. The anti-slip outsoles on these safety shoes give you traction control in slippery areas, making them an ideal option for kitchen, maintenance and janitorial workers.

DAKOTA

WORKPRO SERIES

STSP LACE-UP OXFORD SHOE

- Microfibre and polyurethane upper.
- Breathable mesh lining with FRESHTECH®.
- Removable EVA footbed.
- Cushioning EVA midsole.
- TARANTULA ANTI-SLIP® rubber outsole.



TARANTULA® ANTI-SLIP
rubber outsole.

CSA GRADE 1 STEEL TOE, STEEL PLATE. ESR.

SIZES: 5-11 (incl. half)

STYLE: 5BODDK0-3107

DAKOTA

WORKPRO SERIES

STSP SLIP-ON SHOE

- Microfibre and polyurethane upper.
- Breathable mesh lining with FRESHTECH®.
- Removable EVA footbed.
- Cushioning EVA midsole.
- TARANTULA ANTI-SLIP® rubber outsole.



TARANTULA® ANTI-SLIP
rubber outsole.

CSA GRADE 1 STEEL TOE, STEEL PLATE. ESR.

SIZES: 5-10,11

STYLE: 99996595

SKECHERS
WORK

SLIP RESISTANT ATSP SHOE

- Knit upper with synthetic overlays.
- Breathable mesh lining.
- Removable Air-Cooled memory foam footbed.
- Cushioning EVA midsole.
- Slip resistant rubber outsole.

EXCLUSIVELY AT
Mark's

Slip Resistant
rubber outsole.



CSA GRADE 1 ALUMINUM TOE, STEEL PLATE. ESR.

SIZES: 5-10,11

STYLE: 99996596

From Skechers Work, a cool look for the job facility. These safety shoes feature aluminum toes and steel plates that meet CSA Grade 1 requirements, plus slip-resistant rubber outsoles. They're resistant to puncture and electric shock. For added comfort, these shoes have cushioned insoles and midsoles. Easy to get on and off, they have a non-tie elastic lacing panel.

SKECHERS
WORK

SLIP RESISTANT STSP SHOE

- Mesh upper with synthetic overlays.
- Breathable soft Lycra lining.
- Removable Air-Cooled memory foam footbed.
- Cushioning EVA midsole.
- Slip resistant rubber outsole.

EXCLUSIVELY AT
Mark's

Slip Resistant
rubber outsole.



CSA GRADE 1 STEEL TOE, STEEL PLATE. ESR.

SIZES: 5-10,11 **STYLE:** 99B96553

These Skechers Work shoes help to protect you against dangerous static buildup in the workplace by conducting static electricity through the shoe and into the ground. For comfort, they are breathable and have Air Cooled Memory foam insoles as well as cushioned midsoles. Slip-resistant rubber outsoles add traction in areas that are prone to moisture and grease.

SKECHERS
WORK

STSP SD LACE-UP SHOE

- Knit upper with synthetic overlays.
- Breathable soft Lycra lining.
- Removable Air-Cooled memory foam footbed.
- Cushioning EVA midsole.
- Slip resistant rubber outsole.
- Static dissipative.

EXCLUSIVELY AT
Mark's

Slip Resistant
rubber outsole.



CSA GRADE 1 STEEL TOE, STEEL PLATE. ESR.

SIZES: 5-10,11,12 **STYLE:** 76551

SKECHERS
WORK

"ELDRED" LACE-UP SHOE

- Smooth leather upper with mesh fabric collar and heel panel.
- Relaxed fit design for a roomy comfortable fit.
- Soft fabric lining.
- Removable Memory Foam topped cushioning footbed.
 - EVA midsole.
 - Slip resistant Nitrile rubber traction outsole.

Slip Resistant
rubber outsole.



NON-SAFETY

SIZES: 5-11 (incl. half)

STYLE: 420092

Mellow  Walk

STATIC DISSIPATIVE ST LACE-UP SHOE

- Brushed suede and premium leather upper.
- Moisture wicking lining.
- Removable cushioning footbed.
- Extremely lightweight polyurethane outsole.



STATIC DISSIPATIVE.



SIZES: 5-11 (incl. half)

STYLE: 482339

Mellow  Walk

"JESSICA" STCP SLIP-ON SHOE

- Leather upper.
- Synthetic lining.
- Removable footbed.
- Oil and acid resistant rubber outsole.




CSA GRADE 1 STEEL TOE, COMPOSITE PLATE. ESR.



SIZES: 5.5-10,11

STYLE: TBOA1WE6001

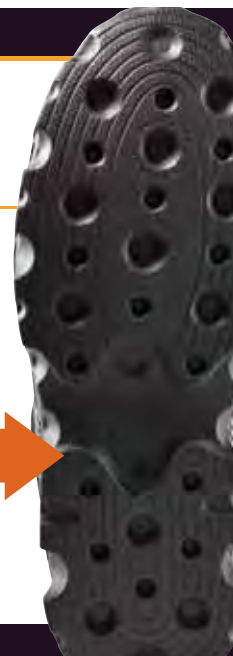
Timberland 

POWERTRAIN SPORT SD ATCP SHOE

- Nylon upper with TPU overlay.
- Mesh lining with antimicrobial treatment.
- Polyurethane midsole.
- Removable single density polyurethane footbed.
 - Heat, oil, slip and abrasion resistant polyurethane outsole.



Slip Resistant
rubber outsole.



CSA GRADE 1 ALUMINUM TOE, COMPOSITE PLATE. SD.

WOMEN'S

WET WEATHER FOOTWEAR



SIZES: 6-10 Full Sizes

STYLE: 5BOEAG8-9601

AGGRESSOR

NST INSULATED WET WEATHER BOOT

- Adjustable cuff keeps snow and debris out.
- Removable insulated wool felt liner.
- Durable TPE injected construction.
- Self-cleaning multi-directional traction rubber outsole.



NON-SAFETY.

SIZES: 6-10 Full Sizes

STYLE: 5BOEAG4-9500

AGGRESSOR

INSULATED STSP WET WEATHER BOOT

- Durable rubber TPO injected construction.
- Adjustable cuff keeps snow and debris out.
- Removable insulated wool felt liner.
- Self-cleaning multi-directional traction rubber outsole.
- Tested to a true temperature rating of -20 to -30° C.



CSA GRADE 1 STEEL TOE, STEEL PLATE. ESR.

SIZES: 5-10 Full Sizes **STYLE:** HHF216113W

Keep your feet safe and dry in these Helly Hansen work boots. With steel toes and plates, they have injection-molded shells to keep water on the outside. Ideal for use in wet weather or wet environments.



STSP POLYURETHANE WET WEATHER BOOT

- Oil resistant polyurethane upper.
- Nylon lining.
- Removable polyurethane footbed.

EXCLUSIVELY AT
Mark's



CSA GRADE 1 STEEL TOE, STEEL PLATE. ESR.



SIZES: 5-10 Full Sizes **STYLE:** HHS166113W



STSP POLYURETHANE WET WEATHER BOOT

- Oil resistant polyurethane upper.
- Nylon lining.
- Removable footbed with arch support.
- Injected polyurethane midsole for added comfort.
- Rubber outsole.

EXCLUSIVELY AT
Mark's



CSA GRADE 1 STEEL TOE, STEEL PLATE. ESR.



Avoid injury downtime with the correct slip resistant footwear.

Reduce the likelihood of slipping or falling at the workplace on wet and/or greasy surfaces with the excellent assortment of slip resistant footwear at Mark's

We have the shoe you need in both men's and women's styles from work boots to casual, wet or cold weather! Whatever job you need slip resistant footwear for, chances are you'll find it at Mark's.

 **Mark's**

WOMEN'S

WINTER FOOTWEAR



SIZES: 6-10 Full

STYLE: 5BOFDK8-8905

DAKOTA WORKPRO SERIES

Ranked by Toronto
Rehabilitation Institute as a
top slip-resistant
winter boot.
RateMyTreads.com



"8905" CTCP TRANSITIONAL WINTER WORK BOOT

- Waterproof full grain leather upper.
- Mesh lining with 400g T-MAX® insulation.
- HYPER-DRI® HD3 waterproof, breathable membrane.
- Lightweight EVA shell.
- ICEFX® rubber outsole.
- Tested to a true temperature rating of -30 to -40° C.

TARANTULA® ANTI-SLIP
rubber outsole.



CSA GRADE 1 COMPOSITE TOE, COMPOSITE PLATE. ESR.

SIZES: 6-10 Full

STYLE: 5BOFDK9-8906

DAKOTA WORKPRO SERIES

Ranked by Toronto
Rehabilitation Institute as a
top slip-resistant
winter boot.
RateMyTreads.com



"THERMALECTRIC" CTCP WINTER BOOT

- Waterproof full grain leather upper.
- Mesh lining with FRESHTECH® treatment.
- 400g T-MAX® insulation.
- Removable polyurethane sponge footbed.
- ICEFX® rubber outsole.
- THERMALECTRIC® heated technology.

TARANTULA® ANTI-SLIP
rubber outsole.



CSA GRADE 1 COMPOSITE TOE, COMPOSITE PLATE. ESR.

SIZES: 6-10 Full

STYLE: 5BOFDK7-8520

DAKOTA WORKPRO SERIES

Ranked by Toronto
Rehabilitation Institute as a
top slip-resistant
winter boot.
RateMyTreads.com



CTCP FELT PACK WINTER BOOT

- Synthetic polyurethane Nubuck upper.
- Lightweight EVA shell.
- Removable liner system.
- 400g T-MAX® insulation.
- ICEFX® rubber outsole.

LINER AVAILABLE 5BOF-LNR-8520

TARANTULA® ANTI-SLIP
rubber outsole.



CSA GRADE 1 COMPOSITE TOE, COMPOSITE PLATE. ESR.

INFORMATION



Footwear Innovations



ARMOUR FLEX® /ARMOUR FLEX+®

This technology is a multi-layer textile composite made from a high tenacity yarn. The woven fabric undergoes different treatments to reach the desired level of hardness while maintaining its flexibility. The ARMOUR-FLEX® textile insole can be sewn directly onto the upper and offers a greater area of protection of the bottom of the foot. ARMOUR-FLEX® will keep your feet warmer in winter because, unlike steel, it will not conduct heat away from your foot. ARMOUR-FLEX® provides the technology that you need to keep your feet protected, while still allowing your foot to bend. ARMOUR-FLEX+® uses a slightly heavier and stiffer material than regular ARMOUR-FLEX® construction and offers a higher puncture resistance.



DURATOE®

DURATOE® is a molded toe cap applied to the outside of the work boot to increase the life of the toe area of the boot. The toe cap can be made of a variety of materials that may look or have properties similar to plastics and other artificial components. They will be quite flexible and extremely durable, ensuring that the toes of your work boots withstand hard wearing.



FRESHTECH®

FRESHTECH® is a safe and invisible antimicrobial treatment that is applied to our footwear and garment products. In garments the treatment inhibits the growth of bacteria that cause odor. In footwear the treatment inhibits the growth of fungi, mold, and mildew, in addition to odor causing bacteria. The FRESHTECH® treatment stops bacteria and fungi from reproducing, which creates a safe and comfortable product. We ensure the effectiveness and durability of FRESHTECH® through standard testing.



HYPER-DRI® FOOTWEAR

Waterproof/Breathable: Designed with a seam sealed, bootie shaped, waterproof and breathable membrane providing an impenetrable barrier to the elements while allowing body generated moisture to escape. The membrane used must meet our high waterproof and water vapour transmission testing standards. Footwear is water tank tested to 50 000 foot flexes to simulate extreme conditions.



QUAD-COMFORT®

The QUAD COMFORT® footwear technology consists of a minimum of 4 comfort components, which address shock absorption, weight distribution, cushioning & pressure displacement and occasionally outsole performance. The construction of the footwear depends on their end use and the requirements of the footwear. The four components are integrated between the footbed or insole through to the bottom of the outsole. If a component provides a significant and functionally noticeable advantage, it may also comprise a feature that is incorporated into the upper of the footwear. Shock absorption is addressed by adding additional cushioning in the heel of the shoe as it is the first areas of contact when walking. Another component of comfort can be added under the ball of the foot to help distribute weight, alleviate pressure points and provide greater energy return. For cushioning and pressure displacement, our footwear uses lightweight, flexible functional midsoles that can be made up of many

densities of cushioning. Lastly, outsoles are functionally engineered to provide the utmost in comfort, shock absorption and flexibility.

Other outsole materials may also be considered such as leather if they truly provide a comfort component or benefit to the end user. Our TARANTULA ANTI-SLIP® outsoles can be used for QUAD COMFORT® footwear to provide a high degree of slip resistance to reduce the likelihood of a slip or fall while still maintaining QUAD COMFORT features in their structure.



TARANTULA ANTI-SLIP®

Our TARANTULA ANTI-SLIP® outsoles provide the ultimate in slip protection by reducing the likelihood that you'll slip or fall on wet and/or greasy surfaces. To achieve this high performance, the outsoles use a unique tread pattern and advanced compound to increase the coefficient of friction. Our anti-slip outsoles provide incredible grip to resist slipping on most surfaces including wet, soapy, oily and greasy surfaces. To achieve this high performance, the footwear has a unique tread pattern and soft rubber compound to increase the coefficient of friction. Many other shoe outsoles hydroplane on wet surfaces, resulting in poor traction for the wearer. TARANTULA ANTI-SLIP® outsoles, however, push liquids to the outside using unique micro channels, instead of keeping liquids underfoot.

DISCLAIMER: This footwear has been tested for wet and dry conditions. It has not been tested for use on any type of ice.



TARANTULA® TRACTION ON DEMAND

TARANTULA® TRACTION ON DEMAND is an advanced and durable retractable spike technology made with the strongest tungsten carbide materials. The spikes are deployed and retracted on demand with the turn of a handle for convenience. They are functionally designed to maximize grip performance on icy surfaces.

DISCLAIMER: These retractable spikes are intended for outdoor use. The spikes are specifically designed to bite into ice but will also bite into indoor surfaces. Please ensure to retract the spikes before going indoors.



ICEFX®

ICEFX® has an innovative tread design to provide greater surface contact in the heel strike zone and forefoot to achieve an anti-slip outsole. The outsole also uses a softer, more flexible rubber compound that does not harden in the cold and incorporates gripping pods to provide enhanced traction. ICEFX® may also utilize other compounds or materials in the outsole to help achieve slip resistance on ice. Constant research is explored to search for new and better materials to provide a "Safer Way to Walk on Ice".

DISCLAIMER: ICEFX® provides enhanced traction on ice but does not guarantee slips will not occur under any circumstances. Care should always be taken when walking on ice.

THERMALECTRIC®

THERMALECTRIC® was created to provide maximum comfort in the cold. Designed with an innovative and rechargeable, three temperature heating system, these rugged items have the ability to keep you warm

Footwear Innovations

in the cold weather. Just by pressing the LED flame button, heat is instantly supplied to the product using a power pack. The power pack can be easily recharged when needed.



T-MAX®

The warmest, lightest hypo-allergenic insulation on the market. It regulates body temperature by allowing moisture to move away from the body, keeping the body dry and comfortable.



VIBRAM®

Vibram soles are an expert integration of functional design and high performance compounds. Vibram

ensures that demanding workers have reliable and safe products for their professional activities, in any situation, in any weather condition or environment. Grip, stability, heat and oil resistance, electrical hazard rated, flexibility: a boot powered by Vibram improves worker efficiency, performance, reliability and comfort.



VIBRAM FIRE & ICE®

The Vibram® Fire & Ice™ compound has been studied for extreme applications and maintains its performance values in a wide range of temperatures (from -20°C to +250°C). The formulation satisfies both requirements for fire resistance from NFPA and the Ross cold flex at -23°C.

What Is Rate My Treads?



ratemytreads.com

The KITE Research Institute is the research arm of the Toronto Rehabilitation Institute at the University Health Network located in Toronto. KITE is home to WinterLab, which originally opened as part of the IDAPT (Intelligent Design for Adaptation, Participation and Technology) Centre for Rehabilitation.

KITE works with a broad range of clinicians, engineers, scientists, researchers, students and more to find practical solutions to common problems. We care about slips, trips and falls and their impact on a person's mobility and quality of life.

The researchers at KITE had a vision and a belief: we believe that choosing the right footwear can reduce and prevent unintentional slips and falls. The outcome? The world's only human oriented slip resistant testing method done in a real winter environment – our Maximum Achievable Angle (MAA) Test.

The Maximum Achievable Angle (MAA) Test – We Tip Till You Slip

Participants walk back and forth on an ice floor while we slowly increase the angle of the floor. We call our method the Maximum Achievable Angle Test or MAA.

OUR RATING SYSTEM

If footwear passes an angle of 7 degrees (which means it will have a score of 7), then it passes our MAA test and is on the list with one snowflake! We picked 7 as the minimum because it meets the accessibility guidelines in Ontario for a curb ramp.

If footwear has a score of 11 then it will get 2 snowflakes and if it reaches 15 or above, it will receive 3 snowflakes!

We test on both Cold Ice and Wet Ice to simulate different environments, from an icy parking lot to a slippery wet sidewalk. It is also important that you can walk up and down a ramp, so we test participants walking both uphill and downhill for this very reason.

To ensure maximum slip protection, we base our overall score for each footwear on the lowest MAA from the four testing conditions.

As mentioned above, the footwear was tested under two conditions (Cold Ice and Wet Ice). Those that passed both conditions received two checkmarks; however, there were some that performed well under one condition only, and they received a single checkmark.



Our top picks

(meeting our minimum slip resistance standard for icy conditions)

BRAND	NAME	RATINGS	MAA SCORE	WET ICE	COLD ICE
Dakota	"8901" Transitional Boots 5ANFDKW7-8901 - Pg.78	❄️❄️❄️	12	✓	✓
Dakota	"8527" Leather Winter Boots 5ANFDKW8-8527 - Pg.80	❄️❄️❄️	12	✓	✓
Helly Hansen	CTCP Winter Boots HHF186118 - Pg.81	❄️❄️❄️	11	✓	✓
Helly Hansen	CTCP Winter Boots HHF196119 - Pg.82	❄️❄️❄️	11	✓	✓
Helly Hansen	CTCP Felt Pack Boots HHF146111 - Pg.82	❄️❄️❄️	10	✓	✓
Dakota	"8524" Felt Pack Boots 5ANFDKW6-8524 - Pg.81	❄️❄️❄️	9	✓	✓
Dakota	Thermaelectric Boots 5ANFDK8-8911 - Pg.79	❄️❄️❄️	9	✓	✓
Dakota	Transitional Boots 5ANFDKW0-8907 - Pg.78	❄️❄️❄️	8	✓	✓
Dakota	"8510" Vibram Work Boots 5ANADK7-8510 - Pg.7	❄️❄️❄️	8	✓	✓
Dakota	Wmn's "8905" Work Boots 5BOFDK8-8905 - Pg.116	❄️❄️❄️	8	✓	✓
Dakota	Wmn's "8520" Felt Pack Boots 5BOFDK7-8520 - Pg.116	❄️❄️❄️	8	✓	✓
Dakota	Wmn's Thermaelectric Boots 5BOFDK9-8906 - Pg.116			✓	

For a complete listing of all footwear reviewed go to - ratemytreads.com

Deciphering The Symbols



CSA Green Triangle

Indicates sole puncture protection with Grade 1 protective toecap which can withstand impacts of 125 joules (22.7 kg object falling from 56 cm above).



CSA White Rectangle with Orange Omega

Indicates soles that provide electric shock resistance. Intended to withstand 18,000 volts at 60Hz for one minute without disruptive discharge to ground; leakage current not exceeding 1mA.



CSA Yellow Rectangle

Indicates soles are static-dissipative.

Warning: This footwear should not be used where contact with live electrical conductors can occur.



CSA Blue Rectangle

Indicates Grade 1 protective toecap without sole puncture protection.



CSA Dark Grey Rectangle with White M

Indicates metatarsal protection. Note: Toe protection is required for all metatarsal protective footwear.

These boots are intended for industrial work environments where heavy objects can hurt the metatarsal region of the foot.

The Language of Footwear

ANSI

International standards organization that develops and publishes voluntary consensus technical standards for a range of materials.

Aerospace Lining

A breathable synthetic lining comprised of a mesh-like structure.

Anti-microbial

A chemical treatment applied to footwear linings which prevents microbe growth.

ATCP

Aluminum toe, composite plate.

Cement Construction

A shoe construction in which the upper of a shoe is cemented, rather than stitched, to the bottom of a shoe. Cement construction results in a lighter, more flexible shoe.

Contoured Footbed

An insole that molds to the shape of your foot.

Composite Plate

A safety, puncture resistant sole plate used in safety footwear in replacement of steel plates. A few varieties exist today, made of synthetic materials such as nylons, resins and also Kevlar.

CTCP

Composite toe, composite plate.

Dri-Tec

A generic term for breathable, moisture-wicking lining found in footwear.

Dual Density Midsole

A midsole that employs two different densities of cushioning foam.

ESR

Electrical shock resistance.

EVA

Ethylene Vinyl Acetate - A synthetic compound used for outsoles. EVA provides cushioning to the footbeds, midsoles, and is easily shaped by heat and pressure.

Footbed

Sometimes also referred to by customers as the insole. It is the foundation in footwear that rests under the foot and has a critical role in comfort.

Goodyear Welt Construction

A shoe construction in which the upper and sole of the shoe are stitched together, resulting in greater durability. The resulting seam is visible and runs around the outside of the shoe, where the upper and outsole meet.

Green Diamond Technology

Patented silica carbide crystals are embedded throughout the rubber outsole which are durable and long lasting traction on ice.

Heel Counter

Counters provide support and help the upper wrap around the foot.

Injection Molded Construction

A type of sole unit construction created by injecting material into the sole mold. Injection molded construction is an efficient way to mass-produce footwear.

Inseam

The hidden seam of a welted shoe holding together the welt, upper, lining and insole.

Metguard

A safety feature found in some boots which is comprised of a protective cap that covers the metatarsal area of the foot and protects against injury from impacts. Can be internal or external.

Moisture Wicking

Synthetic materials that have been developed specifically to channel perspiration away from the body.

Nubuck Leather

Nubuck is a type of leather with a soft, velvety surface and is far more durable than suede.

Oarprene

Rubber that is acid and oil resistant.

OrthoLite

OrthoLite insoles are made up of open-cell foam, allowing air to circulate around the foot, keeping it cooler inside the shoe. The open cell structure also moves moisture away from the foot, keeping it drier.

PU

Polyurethane; a type of man-made material.

PVC

Polyvinyl chloride. A semi-rigid plastic, often used in heel counters and outsoles for added support.

SD

Static Dissipating. The shoe dissipates static buildup on the body so as not to cause an arcing effect.

STSP

Steel toe, steel plate.

STCP

Steel toe, composite plate.

TPR

Thermo plastic rubber. A plastic material used by many manufacturers in the injection molding process.

TPU

Thermopolyurethane. Man made material used in footwear production on uppers, but also outsoles.

Upper

The part of the shoe that covers the top part of the foot, from heel to toe.

Welt

A strip of material sewn between the insole and the outsole to create greater durability.

Index

MEN'S

8 INCH BOOTS

10-8680	18
1024259	18
310090	12
5ANADK0-8550	5
5ANADK0-8560	8
5ANADK2-8006	3
5ANADK2-8500	2
5ANADK5-8529	3
5ANADK5-8529WP	4
5ANADK5-8877	2
5ANADK7-8510	7
5ANADK8024B	8
5ANADK8-8523	9
5ANADK9-8512	6
5ANADK9-8516	7
5ANADK9-8517	4
5ANADK9-8518	3
5ANADK9-8521	7
5ANADK9-8522	5
5ANADK9-8537	4
5ANADK9-8557	6
6020VT	17
8600FLX	18
89645	16
CMR1999	17
CMR8939	16
CMR8959	17
HHF182004	9
HHF212005	10
HHS172003	9
HHS202022	11
HHS202023	10
HHS212040	11
P717629	13
P720211	13
P721620	14
TB0A12EZ214	15
TB0A1Q6Z001	15
TB0A1Q6Z001	15
TB0A28VR214	16
TR0A4NRQGYX	12
TR0A4NQ9FWE	12
W17463	14
W197107	14
METGUARDS	
1022091	22
5ANADK3-8112	21
5ANADK7-8415	22
5ANADK7-8514	21
6 INCH BOOTS	
1023250	34
5ANBDK0-6557	26
5ANBDK2-6006	24
5ANBDK2-6500	24
5ANBDK6-6877	24
5ANBDK8-6002	26
5ANBDK8-6108A	25
5ANBDK9-6114	26
5ANBDK9-6516	27
5ANBDK9-6518	25
91631	34
CMR6971	34
HHS173001	27

HHS193002	
HHS202026	
HHS202027	
HHS212042	
P717627	
P720204	
P724582	
P724867	
TB0A1Q6S214	
TB0A22H2231	
TR0A4NRFBLK	
W197106	
W207133	
HIKERS	
1020096	
1025701	
1025725	
26039MDQC-AS	
302120	
302123	
5ANCAG9-2000	
5ANCAG9-2300	
5ANCDK0-2301	
5ANCDK0-2302	
5ANCDK1-2126	
5ANCDK5-2120	
5ANCDK7-2124	
5ANCDK8-2127	
HHF171006	
HHF171007	
HHS191008	
HHS191010	
HHS191009	
HHS211005	
J003345W	
J099383	
J17863	
J17865	
J19483W	
KD0A4TELA62	
P720996	
TB0A1OP6001	
ATHLETIC	
10-501	
1024610	
1025691	
108008BLL	
5ANDDK0-1117QC	
5ANDDK0-1119QC	
5ANDDK0-3819	
5ANDDK0-3820	
5ANDDK0-3821	
5ANDDK0-3822	
5ANDDK1-3619	
5ANDDK1-3830	
5ANDDK1-3831	
5ANDDK5-3613	
5ANDDK6-3617	
5ANDDK8-3603	
5ANDDK8-3604	
5ANDDK9-3621	
HHF204040	
HHS194002	
HHS194003	
HHS214004	

J17541	
P721642	
P724586	
P724589	
TB0A1GVQ001	
TB0A1RV3001	
TB0A1ZU001	
TB0A21RU001	
TB0A21SS001	
TB0A29C6001	
ANTI-SLIP	
5ANDDK0-3020	
5ANDDK0-3021	
5ANDDK0-3023	
5ANDDK0-3025	
5ANDDK0-3026	
5ANDDK0-3027	
77A77068	
99999066	
99999068	
99999070	
99999071	
99999110	
STATIC DISSIPATIVE	
5ANDDK9-3200	
5ANDDK9-3201	
TB0A1VDY001	
WET WEATHER	
3186-11A	
5ANEAG2-9500	
5ANEAG2-9600	
5ANECH1-7000	
5ANEDK5-9850	
5ANEDK5-9860	
8564	
9699	
A1305B-11	
E902033	
EC02A33	
HHF196120	
HHS214011	
HHS214012	
LICO-M001	
LICO-MP01	
NE68A93	
PB661841MWCSA	
WINTER	
5ANFAGW0-8910	
5ANFDKW0-8901	
5ANFDKW6-8524	
5ANFDKW7-8901	
5ANFDKW8-8527	
5ANFDKW8-8530	
5ANFDKW8-8912	
5ANFDK8-8911	
915605	
HHF146111	
HHF186118	
HHF196119	
WOMEN'S	
8 INCH BOOTS	
5BOAAG6-8500	
5BOADK0-8030	
5BOADK1-8020	
5BOADK4-8006	

5BOADK5-8112	85
5BOADK9-8016	85
HHS202181W	86
P311182	86
W751126	86
6 INCH BOOTS	
1022104	92
5BOBAG4-6500	88
5BOBDK1-6020	88
5BOBDK5-6016	89
5BOBDK6-6006	89
HHF191061W	90
HHS202160W	90
P310912	91
P311382	91
TB0A1KJU214	92
TB0A1Q6K001	92
HIKERS	
305003DW	97
5BOCAG9-2501	94
5BOCAG9-2502	94
5BOCDK0-2003	95
5BOCDK0-2007	95
5BOCDK8-2120	96
HHS181009W	96
HHS191010W	97
J099354	98
J17862	98
ATHLETIC	
308004BLK	102
308005BLK	102
5BODAG9-1501	100
5BODDK7-3602	101
5BODDK8-1007	100
5BODDK9-1008	100
5BODDK9-1009	101
HHS201006W	102
J17548	104
P310493	103
P311387	103
P311392	103
TB0A1RTM001	104
W207144	104
ANTI-SLIP	
420092	110
482339	110
5B0DDK0-3105	107
5B0DDK0-3106	106
5B0DDK0-3107	107
5B0DDK0-3108	106
76551	109
99996595	108
99996596	108
99B96553	109
TB0A1WE6001	110
WET WEATHER	
5B0EAG4-9500	112
5B0EAG8-9601	112
HHF216113W	113
HHS166113W	113
WINTER	
5B0FDK7-8520	116
5B0FDK8-8905	116
5B0FDK9-8906	116
85	



HEAD OFFICE

205 Quarry Park Blvd. SE
Calgary, Alberta

P 1.855.592.7444

W markscommercial.com

Mark's Commercial is a proud member of
the Canadian Tire Group of Companies.