

STOCKED IN CANADA


BIZ CORPORATES


BIZ COLLECTION

1elements

the first place to start

 **Mark's**
COMMERCIAL



CONTENTS

| | |
|------------------------|----|
| COOL STRETCH SUITING | 1 |
| COMFORT WOOL SUITING | 11 |
| SEPARATES | |
| TOPS | 21 |
| BOTTOMS | 37 |
| CASUAL WEAR | |
| POLOS & TEES | 43 |
| OUTERWEAR & ACTIVEWEAR | 49 |
| ACCESSORIES | 55 |

*Looking for smart, modern,
adaptable suiting and accessories?
We offer high quality pieces to
give you the confidence you need
in the workplace.*

COOL STRETCH SUITING

 **BIZ** CORPORATES



STYLE NUMBER

80111

SIZES: 34-56 Mens

(Regular)

Mens 2-BUTTON JACKET

A comfortable and well structured jacket can complete any outfit. Fully lined with BIZ Corporates' unique Stretch Lining.

92% Polyester 8% Bamboo Charcoal

FEATURES:

- Under arm comfort pads
- 3 Internal pockets - 2 on the left and a security pocket on the right
- Lining with silver piping trim
- Double vented at the rear with fully functional outer pockets

COLOURS:



STYLE NUMBER

70112

SIZES: 30-50 Mens

(Regular: 30-44, Stout: 42-50)

Mens FLAT FRONT PANT

Classic style, this flat front pant creates a slimmer front appearance.

92% Polyester 8% Bamboo Charcoal

FEATURES:

- Waist band with stretch fusing
- Internal security pocket on right front pocket, two rear pockets

COLOURS:



Mens jacket and pant
shown in Navy

STYLE NUMBER

90111

SIZES: 34-56 Mens

(Regular)



Mens vest
shown in Black

Mens PEAKED WITH KNITTED BACK Vest

Stretch knit back provides extra comfort for those in demanding roles.

92% Polyester 8% Bamboo Charcoal

FEATURES:

- Stretch knit back
- Fully functional front pockets



(Back)
Mens vest
shown in Black

COLOURS:

BLACK

STYLE NUMBER

90112

SIZES: 34-56 Mens

(Regular)



Black

Charcoal

Navy

COLOURS:



BLACK

CHARCOAL

NAVY

Mens LONGLINE Vest

Structured vest, perfect for wearing under jackets.

92% Polyester 8% Bamboo Charcoal

FEATURES:

- Hip length
- 5 Button front
- Self-fabric back
- Functional external pockets

(Back)
Mens vest
shown in Black

STYLE NUMBER

50111

SIZES: 0-22 Womens

Womens **PEAKED WITH KNITTED BACK** **Vest**

The Peaked Vest with Knitted back is a unique option that adds a funky look to any corporate range. Stretch knit back provides extra comfort for those in demanding roles. It is a great option when added to make a 3-piece suit or as a stand-alone.

92% Polyester 8% Bamboo Charcoal

FEATURES:

- Stretch knit back
- Fully lined with 2 welt pockets

COLOURS:

BLACK



STYLE NUMBER

10111

SIZES: 0-22 Womens

Womens RELAXED FIT Pant

A comfortable everyday pant, mid-rise waist with a waistband designed to sit just below the navel.

92% Polyester 8% Bamboo Charcoal

FEATURES:

- Mid-rise pant
- Straight leg
- Horizontal front pockets, one rear pocket



Womens pant
shown in Navy

COLOURS:



BLACK

CHARCOAL

NAVY



(Back)
Womens pant
shown in Navy

STYLE NUMBER

10115

SIZES: 0-22 Womens

Womens pant
shown in Black**COLOURS:**

BLACK

CHARCOAL

NAVY

Womens ADJUSTABLE WAIST Pant

A popular pant that is a must have. The waist has a hidden elastic band through the side which, for people who are constantly on the move and need this comfort. Anyone looking for a good all-rounder will find that this style is a great option.

92% Polyester 8% Bamboo Charcoal

FEATURES:

- Mid-rise
- Concealed adjustable waist
- Deep side pockets

(Back)
Womens pant
shown in Charcoal

STYLE NUMBER

10117

SIZES: 0-22 Womens

Womens SLIM LEG Pant

Make a statement with slim leg pants that taper into the ankle with a side split.

92% Polyester 8% Bamboo Charcoal

FEATURES:

- Slim leg tapers into ankle
- Split at finished length for comfort
- Front horizontal pockets

Womens pant
shown in Black

COLOURS:

(Back)
Womens pant
shown in Black

STYLE NUMBER

20111

SIZES: 0-22 Womens



Womens skirt
shown in Black

COLOURS:

BLACK

CHARCOAL

NAVY

Womens RELAXED FIT Skirt

The Relaxed Fit Lined skirt is comfortable and has a longer length. Wear it high on the waist or go up a size and drop it down onto the hips for a more relaxed and comfortable fit. A rear kick pleat opening is included for ease of movement.

92% Polyester 8% Bamboo Charcoal

FEATURES:

- Knee length skirt
- Horizontal pockets
- Fully lined with Stretch Lining
- Back hem split
- Concealed zipper



(Back)
Womens skirt
shown in Navy

STYLE NUMBER

20115

SIZES: 0-22 Womens



Womens skirt
shown in Black

COLOURS:



Womens MULTI-PLEAT Skirt

A must-have knee length skirt that is comfortable for those on-the-go. Like the Relaxed Fit Skirt, it can be worn either on the waist or dropped down onto the hips for extra comfort.

92% Polyester 8% Bamboo Charcoal

FEATURES:

- Knee length skirt
- Box pleats in rear for modern look and comfort
- Belt loops
- Deep side pockets



(Back)
Womens skirt
shown in Charcoal

COMFORT WOOL STRETCH SUITING

 BIZ CORPORATES



STYLE NUMBER

84011

SIZES: 34-56 Mens

(Regular)

Mens 2-BUTTON JACKET

A comfortable and well structured jacket can complete any outfit and this Comfort Wool Stretch 2-button jacket is no exception.

55% Polyester, 43% Wool, 2% Elastane

FEATURES:

- Under arm comfort pads
- 3 Internal pockets - 2 on the left and a security pocket on the right
- Lining with silver piping trim
- Embroidery zip
- Double vented at the rear with fully functional outer pockets

COLOURS:



STYLE NUMBER

74012

SIZES: 30-48 Mens

(Regular)

Mens FLAT FRONT PANT

Classic style, this flat front pant creates a slimmer front appearance.

55% Polyester, 43% Wool, 2% Elastane

FEATURES:

- Waist band with stretch fusing
- Internal security pocket on right front pocket, two rear pockets

COLOURS:



Mens jacket and pant
shown in Navy

STYLE NUMBER

94011

SIZES: 34-56 Mens

(Regular)



Mens vest
shown in Black

Mens PEAKED WITH KNITTED BACK Vest

Stretch knit back provides extra comfort for those in demanding roles.

55% Polyester, 43% Wool, 2% Elastane

FEATURES:

- Stretch knit back
- Fully functional front pockets
- Dry clean only



(Back)
Mens vest
shown in Black

COLOURS:


 A solid black rectangular color swatch.

BLACK

STYLE NUMBER

94012

SIZES: 34-56 Mens

(Regular)



Black

Charcoal

Navy

COLOURS:



BLACK

CHARCOAL

NAVY

Mens LONGLINE Vest

Structured vest, perfect for wearing under jackets.

55% Polyester, 43% Wool, 2% Elastane

FEATURES:

- Hip length
- 5 Button front
- Self-fabric back
- External pockets



(Back)
Mens vest
shown in Black

STYLE NUMBER

54011

SIZES: 0-22 Womens

Womens **PEAKED WITH KNITTED BACK** **Vest**

The Peaked Vest with Knitted back is a unique option that adds a funky look to any corporate range. Stretch knit back provides extra comfort for those in demanding roles. It is a great option when added to make a 3-piece suit or as a stand-alone.

55% Polyester, 43% Wool, 2% Elastane

FEATURES:

- Stretch knit back
- Fully lined with 2 welt pockets

COLOURS:

BLACK



STYLE NUMBER

14011

SIZES: 0-22 Womens

Womens RELAXED FIT Pant

A comfortable everyday pant, mid-rise waist with a waistband designed to sit just below the navel.

55% Polyester, 43% Wool, 2% Elastane

FEATURES:

- Mid-rise pant
- Straight leg
- Horizontal front pockets, one rear pocket



Womens pant
shown in Navy

COLOURS:



(Back)
Womens pant
shown in Navy

STYLE NUMBER

14015

SIZES: 0-26 Womens



Womens pant
shown in Charcoal

COLOURS:



BLACK

CHARCOAL

NAVY

COMFORT WOOL STRETCH SUITING

Womens ADJUSTABLE WAIST Pant

A popular pant that is a must have. The waist has a hidden elastic band, for people who are constantly on the move and need this comfort. Anyone looking for a good all-rounder will find that this style is a great option.

55% Polyester, 43% Wool, 2% Elastane

FEATURES:

- Mid-rise
- Concealed adjustable waist
- Deep side pockets



(Back)
Womens pant
shown in Charcoal

STYLE NUMBER

14017

SIZES: 0 - 16 Womens

Womens pant
shown in Black

COLOURS:



Womens SLIM LEG Pant

Make a statement with slim leg pants that taper into the ankle with a side split.

55% Polyester, 43% Wool, 2% Elastane

FEATURES:

- Slim leg tapers into ankle
- Split at finished length for comfort
- Front horizontal pockets

(Back)
Womens pant
shown in Black

STYLE NUMBER

24011

SIZES: 0-22 Womens



Womens skirt
shown in Navy

COLOURS:

BLACK

CHARCOAL

NAVY

COMFORT WOOL STRETCH SUITING

Womens RELAXED FIT Skirt

The Relaxed Fit Lined skirt is comfortable and has a longer length. Wear it high on the waist or go up a size and drop it down onto the hips for a more relaxed and comfortable fit. A rear kick pleat opening is included for ease of movement.

55% Polyester, 43% Wool, 2% Elastane

FEATURES:

- Knee length skirt
- Horizontal pockets
- Fully lined with Stretch Lining
- Back hem split
- Concealed zipper



(Back)
Womens skirt
shown in Navy

STYLE NUMBER

24015

SIZES: 0-22 Womens

Womens MULTI-PLEAT Skirt

A must-have knee length skirt that is comfortable for those on-the-go. Like the Relaxed Fit Skirt, it can be worn either on the waist or dropped down onto the hips for extra comfort.

55% Polyester, 43% Wool, 2% Elastane

FEATURES:

- Knee length skirt
- Box pleats in rear for modern look and comfort
- Belt loops
- Deep side pockets



Womens skirt
shown in Navy

COLOURS



(Back)
Womens skirt
shown in Charcoal

SEPARATES - TOPS

 BIZ COLLECTION



STYLE NUMBER

WP417M

SIZES: XS-5XL Mens

Mens MILANO Pullover

A smart everyday wool blend knitwear that is both practical and stylish! Easy to care for and pill resistant. Ribbed details are designed enhance and 'raise the bar' on this classic style.

50% Pre-Shrunk Wool, 50% Acrylic - 12 Gauge

FEATURES:

- Contemporary V-neck style
- Ribbed side panel detail
- Pill resistant
- Machine washable on wool setting



(Back)
Mens pullover
shown in Navy

COLOURS:

STYLE NUMBER

LC417L

SIZES: S-3XL Womens

Womens MILANO Cardigan

A smart everyday wool blend knitwear that is both practical and stylish! Easy to care for and pill resistant. Ribbed details are designed enhance and 'raise the bar' on this classic style.

50% Pre-Shrunk Wool, 50% Acrylic - 12 Gauge

FEATURES:

- Longer hip length
- Matching ribbed sleeve and hem detail
- Slim-line, button through placket



(Back)
Womens cardigan
shown in Charcoal

COLOURS:

STYLE NUMBER

40320 Mens, **40310** Womens

SIZES: XS-5XL Mens, 0-22 Womens

Mens & Womens HUDSON Long Sleeve Shirt

A wardrobe classic, redefined with a relaxed silhouette and minimal detailing. Constructed from 100% cotton yarn dyed dobby fabric.

100% Cotton

FEATURES:

- Yarn dyed dobby fabric
- Contrast fabric inside cuff
- Inverted pleat in back yoke for comfort
- Tonal contrast button stitch and hole

Mens:

- Executive-fit shirt
- Loose pocket

Womens:

- Semi-fitted open neck shirt



Mens shirt
shown in Patriot Blue



Womens shirt
shown in Melon

COLOURS:



STYLE NUMBER

S770ML Mens, **S770LL** Womens

SIZES: XS-5XL Mens, 2-22 Womens

Mens & Womens MONACO Long Sleeve Shirt

French styling adds flair to this classic all-rounder shirt. Made with a comfortable stretch fabric that moves with you and is easy to care for.

68% Cotton, 28% Polyester, 4% Elastane

FEATURES:

- Curved hem – can be worn in or out

Mens

- Classic fit
- Back shoulder pleats
- Modern collar
- Chest pocket and adjustable cuff

Womens

- French style Y-neckline
- Turn back cuff design and twin back pleats



Mens shirt
shown in Electric Blue



Womens shirt
shown in Ink

COLOURS:



STYLE NUMBER

S522ML Mens, **S522LL** Womens

SIZES: XS-5XL Mens, 2-22 Womens

Mens & Womens DALTON Long Sleeve Shirt

Featuring Dupont Teflon Stain Release treatment. Wrinkle resistant and high colour retention resists fading for longer.

65% Polyester, 35% Cotton

FEATURES:

- Dupont Teflon Stain Release
- Back Shoulder Pleats for Movement
- Adjustable Two Button Cuff
- Longer length, Curved Hem

Mens

- Button-Down Collar

Womens

- Waist and bust darts for shape



Mens shirt
shown in Black



Womens shirt
shown in Mid Blue

COLOURS:



STYLE NUMBER

S812ML Mens, **S812LL** Womens

SIZES: XS-5XL Mens, 2-22 Womens

Mens & Womens EURO Long Sleeve Shirt

Big on style and quality! Easy Care Poly/cotton fabric is a breeze to wash/iron and user-friendly.

65% Polyester, 35% Cotton

FEATURES:

- Curved hem – can be worn in or out
- Yarn-dyed fabric with mini-fine stripe

Mens

- Classic fit
- Modern collar
- Chest pocket
- Twin back pleats and adjustable cuff

Womens

- Semi-fitted
- Feminine gathered detail on shoulder and back yoke



Mens shirt
shown in Blue



Womens shirt
shown in Black

COLOURS:



STYLE NUMBER

S770MS

SIZES: XS-5XL Mens



Mens **MONACO** Short Sleeve Shirt

French styling adds flair to this classic all-rounder shirt. Made with a comfortable stretch fabric that moves with you and is easy to care for.

68% Cotton, 28% Polyester, 4% Elastane

FEATURES:

- Curved hem – can be worn in or out
- Classic fit
- Back shoulder pleats
- Modern collar
- Chest pocket and adjustable cuff



(Back)
Mens shirt
shown in Ink

COLOURS:



STYLE NUMBER

S770LL

SIZES: 2-22 Womens



Womens MONACO Short Sleeve Shirt

French styling adds flair to this classic all-rounder shirt. Made with a comfortable stretch fabric that moves with you and is easy to care for.

68% Cotton, 28% Polyester, 4% Elastane

FEATURES:

- Curved hem – can be worn in or out
- French style Y-neckline
- Turn back cuff design and twin back pleats



(Back)
Womens shirt
shown in Electric Blue

COLOURS:



STYLE NUMBER

S522MS Mens, **S522LS** Womens

SIZES: XS-5XL Mens, 2-22 Womens

Mens & Womens DALTON Short Sleeve Shirt

Featuring Dupont Teflon Stain Release treatment. Wrinkle resistant and high colour retention resists fading for longer.

65% Polyester, 35% Cotton

FEATURES:

- Dupont Teflon Stain Release
- Back Shoulder Pleats for Movement
- Adjustable Two Button Cuff
- Longer length, Curved Hem

Mens

- Button-Down Collar

Womens

- Waist and bust darts for shape

Mens shirt
shown in Blue

Womens shirt
shown in Black

COLOURS:



STYLE NUMBER

S812MS Mens, **S812LS** Womens

SIZES: XS-5XL Mens, 2-22 Womens

Mens & Womens EURO Short Sleeve Shirt

Big on style and quality! Easy Care Poly/cotton fabric is a breeze to wash/iron and user-friendly.

65% Polyester, 35% Cotton

FEATURES:

- Curved hem – can be worn in or out
- Yarn-dyed fabric with mini-fine stripe

Mens

- Classic fit
- Modern collar
- Chest pocket
- Twin back pleats and adjustable cuff

Womens

- Semi-fitted
- Feminine gathered detail on shoulder and back yoke



Mens shirt
shown in Blue



Womens shirt
shown in Black

COLOURS:



STYLE NUMBER

40311

SIZES: 0-22 Womens

Womens HUDSON 3/4 Sleeve Shirt

A wardrobe classic, redefined with a relaxed silhouette and minimal detailing. Constructed from 100% cotton yarn dyed dobby fabric.

100% Cotton

FEATURES:

- Semi-fitted open neck shirt
- Yarn dyed dobby fabric
- Contrast fabric inside cuff for cuff fold back feature
- Sleeve placket and inverted pleat in back yoke for comfort
- Tonal contrast button stitch and hole



(Back)
Shown in Dynasty Green

COLOURS:



STYLE NUMBER

40111

SIZES: 0-22 Womens

Womens FIFTH AVENUE 3/4 Sleeve Shirt

This ¾ sleeve shirt has front and back shaping and can be worn tucked in or left out. The fabric is a yarn dyed soft textured stretch cotton blend.

65% Cotton 33% Polyester 2% Elastane

FEATURES:

- Semi-fitted shirt
- Yarn dyed fine strip, soft textured stretch cotton blend fabric
- Contrast trim collar, inside yoke and outside cuff
- Gros-grain trim in inside collar stand, placket and inside cuff



Alaskan Blue



Patriot Blue

COLOURS:



STYLE NUMBER

S770LT

SIZES: 2-22 Womens

Womens MONACO 3/4 Sleeve Shirt

French styling adds flair to this classic all-rounder shirt. Made with a comfortable stretch fabric that moves with you and is easy to care for.

68% Cotton, 28% Polyester, 4% Elastane

FEATURES:

- Curved hem – can be worn in or out
- French style Y-neckline
- Turn back cuff design and twin back pleats
- Waist and bust darts for elegant fit



Ink

Platinum

Electric Blue



(Back)
Womens shirt
shown in Electric Blue

COLOURS:



STYLE NUMBER

LB3600

SIZES: 2-22 Womens



Black

Mid
Blue

Navy

Womens PLAIN OASIS 3/4 Sleeve Shirt

Appealing linen-like flecked fabric appearance adds subtle surface appeal. BIZ COMFORTCOOL™ fabric is specially treated at the yarn stage – this breathable fabric has a superior moisture wicking ability keeping you cool and comfortable.

100% Yarn Wicked Breathable Polyester

FEATURES:

- Flattering open Y-line placket
- Wrinkle resistant
- Quick drying
- Moisture wicking



(Back)
Womens shirt
shown in Mid Blue

COLOURS:



STYLE NUMBER

S312LT

SIZES: 2-20 Womens



Black

Blue

White

Womens PRESTON 3/4 Sleeve Shirt

A classic business shirt with subtle, updated style details. Easy-care, easy-Iron, Poly/Cotton fabric resists creasing so you look sharp for longer. Fabric incorporates a self-stripe pattern adding understated surface interest.

65% Polyester, 35% Cotton

FEATURES:

- Unique cut-away V-neckline
- Concealed button down collar
- Concealed buttons and mitered cuff details
- Colour fast and durable



(Back)
Womens shirt shown in Blue

COLOURS:

BLACK

WHITE

BLUE

SEPARATES - BOTTOMS

 BIZ COLLECTION



STYLE NUMBER

BS29210

SIZES: XS-5XL Mens

Mens CLASSIC Flat Front Pant

Designed to be your year round 'go-to' pant. Easy-care poly-viscose fabric has been woven with mechanical stretch allowing a touch of ease when seated or moving.

65% Polyester, 35% Viscose

FEATURES:

- Mid-rise fit
- Straight leg
- Front side pockets and two back hip pockets

COLOURS:

Mens pant
shown in Black

STYLE NUMBER

BS29320

SIZES: 2-22 Womens

Womens CLASSIC Flat Front Pant

Designed to be your year round 'go-to' pant. Easy-care poly-viscose fabric has been woven with mechanical stretch allowing a touch of ease when seated or moving.

65% Polyester, 35% Viscose

FEATURES:

- Mid-rise fit
- Straight leg
- Front welt pockets and single welt back hip pocket

COLOURS:

Womens pant
shown in Charcoal

STYLE NUMBER

BS724M Mens, **BS724L** Womens

SIZES: 28-50 Mens, 2-22 Womens

Mens & Womens LAWSON Chino Pant

A professional approach to casual workplace dressing. Natural breathable cotton fabric with added elastane allows maximum flex when moving and extra comfort when seated.

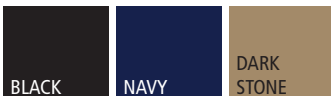
98% Cotton, 2% Elastane, 7.4 oz/yd²

FEATURES:

- Mid-rise fit
- Flat front with tapered leg
- Two side angled pockets, two back welt pockets



COLOURS:



(Back)
Mens pant
shown in Navy



(Back)
Womens pant
shown in Dark Stone

STYLE NUMBER

BS10110 Mens, **BS610L** Womens

SIZES: 28-52 Mens, 0-26 Womens

(Mens: 28-40 Regular, 36-52 Stout)

Mens pant
shown in BlackWomens pant
shown in Black

Mens & Womens DETROIT Flexi-Band Pant

The Flexi-band feature allows the waistband to flex up to one inch for maximum comfort. The durable Poly/Viscose fabric with added Dupont™ Teflon® stain release treatment, keeps you looking good for longer.

65% Polyester, 35% Viscose - Teflon® stain resistance fabric

FEATURES:

- Mid-rise fit
- Straight leg

Mens

- Single pleat front with side pockets, 2 rear pockets

Womens

- Flat front with 2 angled pockets

COLOURS:



STYLE NUMBER

BS10112R Mens, **BS10322** Womens

SIZES: 28-40 Mens, 0-24 Womens

Mens & Womens DETROIT Flexi-Band Short

The Flexi-band feature allows the waistband to flex up to one inch for maximum comfort. The durable Poly/Viscose fabric with added Dupont™ Teflon® stain release treatment, keeps you looking good for longer.

65% Polyester, 35% Viscose - Teflon® stain resistance fabric

FEATURES:

- Mid-rise fit
- Straight leg

Mens

- Flat front, 10.5" inseam
- Side pockets, 2 rear pockets, 1 side cargo pocket and 1 side welt pocket

Womens

- Flat front
- Side pockets, 2 rear pockets and single side leg welt pocket with tab
- Flexi-band in plus sizes only

Mens short
shown in Black



Womens short
shown in Navy



COLOURS:



POLOS & TEES



STYLE NUMBER

P300MS Mens, **P300LS** Womens

SIZES: S-5XL Mens, 2-20 Womens

Mens shirt
shown in NavyWomens shirt
shown in Royal

Mens & Womens SPRINT Polo

Made with new generation BIZCOOL™ Mesh – smaller smoother weave feels great against the skin.

100% Breathable Polyester, 4.3 oz/yd²

FEATURES:

- Fade and shrink resistant
- Raglan shaped sleeve and flat-locked seams
- UPF Rating: 40-50+

COLOURS:



STYLE NUMBER

P405MS Mens, **P405LS** Womens

SIZES: S-5XL Mens, 4-20 Womens



Mens shirt
shown in Navy/Sky



Womens shirt
shown in Grey/Fluoro Lime

Mens & Womens RAZOR Polo

Specially developed interlock knit fabric has extra stretch so more comfortable to wear. BIZCOOL™ performance keeps you cool and dry.

100% Polyester Sports Interlock, 4.6 oz/yd²

FEATURES:

- Grid mesh underarm panels for breathability
- Contrast panels and piping
- Knitted collar with contrast placket
 - Fade and shrink resistant
 - UPF Rating: 40-50+

COLOURS:



STYLE NUMBER

P706MS Mens, **P706LS** Womens

SIZES: S-5XL Mens, 2-20 Womens

Mens & Womens PROFILE Polo

Fabric has a luxury cotton feel giving an upmarket appearance without the price tag. Subtle pattern and slight surface lustre adds interest.

55% Cotton, 45% Polyester Jersey knit, 4.9 oz/yd²

FEATURES:

- Modern fit
- Natural breathable fibres for cool comfort
- Shoulder and side panel stitching detail
- Self fabric collar and sleeve cuff
- UPF Rating: 25-35+

Womens

- Y-line placket that flatters the neckline



Mens shirt
shown in Navy



Womens shirt
shown in Silver

COLOURS:



STYLE NUMBER

P815MS Mens, **P815LS** Womens

SIZES: XS-5XL Mens, 2-20 Womens

Mens & Womens AERO Polo

Light as air fabric with a cotton-like feel keeps you cool and comfortable all day long. A heathered marle pattern adds subtle fabric point of difference to this modern classic polo.

100% Cotton-feel Micro Polyester, 4.7 oz/yd²

FEATURES:

- Modern fit
- Fade and shrink resistant
- Flat-locked shoulder seams
- Self-fabric collar & placket
- Moisture wicking, quick drying



Mens shirt
shown in Charcoal



Womens shirt
shown in Electric Blue

COLOURS:



STYLE NUMBER

T301MS Mens, **T301LS** Womens

SIZES: S-5XL Mens, 2-20 Womens



Mens & Womens SPRINT T-Shirt

Made with new generation BIZCOOL™ Mesh – smaller smoother weave feels great against the skin. BIZCOOL™ performance treated breathable polyester micro fibres gives optimum comfort with moisture wicking properties to keep you cool and dry.

100% Breathable Polyester, 4.3 oz/yd²

FEATURES:

- Raglan shaped sleeve and flat-locked seams
- Fade and shrink resistant
- Moisture wicking, quick drying
- UPF Rating: 40-50+

COLOURS:



STYLE NUMBER

T800MS Mens, **T800LS** Womens

SIZES: XS-5XL Mens, 2-20 Womens



Mens & Womens AERO T-Shirt

This classic t-shirt style has been remastered with cotton feel fabric and subtle marle pattern for a contemporary update.

100% Cotton-feel Micro Polyester, 4.7 oz/yd²

FEATURES:

- Modern fit
- Fade and shrink resistant
- Heathered marle effect fabric
- Flat-locked shoulder seams
- Moisture wicking, quick drying
- Crew neck (men), V-neck (women)

COLOURS:



OUTERWEAR & ACTIVEWEAR



STYLE NUMBER

J307M Mens, **J307L** Womens

SIZES: S-5XL Mens, S-2XL Womens

Mens jacket
shown in Navy/GraphiteWomens jacket
shown in Black/Cyan

Mens & Womens GENEVA Softshell Jacket

New Generation Softshell with breathable BIZTECH™ technology.
Keeps you warm without overheating.

Outer: 100% Breathable Polyester

Lining: Bonded contrast textured micro-ribbed fleece

FEATURES:

- Stand up collar with soft chin guard
- Adjustable cuff with tab closure
- Contrast side zippered pockets with toggles
- Scalloped longer back tail
- Water Repellent rating - 3000mm inner membrane
- Breathability rating - 3000g/m²
- Windproof

COLOURS:



STYLE NUMBER

SW520M Mens, **SW520L** Womens

SIZES: S-5XL Mens, XS-2XL Womens

Mens jacket
shown in RoyalWomens jacket
shown in Black Marle

Mens & Womens HYPE FULL-ZIP Fleece Jacket

Sports performance fabric; this fabric has a super smooth surface finish.

100% Polyester Sports Fleece, 7.2 oz/yd²

FEATURES:

- Front full zip with side zippered pockets
- Self-fabric, zip up collar
- Self-fabric layered cuff
- Modern loose fitting hem and cuffs
- Fade and shrink resistant

COLOURS:



STYLE NUMBER

J515M Mens, **J515L** Womens

SIZES: S-5XL Mens, XS-2XL Womens

Mens & Womens STEALTH TECH Hoodie Jacket

Hybrid jacket offers excellent warmth, flexibility and style, perfect for outdoor or cold-weather activities. Quilted, lightweight insulated polyfil on chest front creates air pockets of warmth without adding bulk. Sleeves, shoulders and back feature a brushed polyester/elastane stretch fabric that moves with you.

Front Body: 100% Quilted Nylon Ripstop

Back/Sleeves: 95% Polyester, 5% Elastane Stretch Bonded Fleece

Insulation: 100% Hi-loft Polyfil

FEATURES:

- Contrast front zipper and pockets
- Stand up collar with integrated bonded fleece hood
- Thumb loops to keep hands warm
- Light and easy to pack down



Mens jacket
shown in Black/Lime



Womens jacket
shown in Black/Silver Grey

COLOURS:



STYLE NUMBER

SW932M

SIZES: XXS-5XL Unisex

Unisex **JASPER** **Knit Jacket**

Warm marle knitted fleece body. Adult Modern fit for a versatile multi gender option

100% Knitted Polyester

Contrast: 100% Polyester Soft Shell

FEATURES:

- Thumb holes in the sleeve cuffs
- 2 Side hip zip pockets and single chest pocket
- Contrast soft shell panels for reinforcement in high wear areas – front hip, under arms, over shoulders and lower tail

Grey/Black

Gunmetal/
Black

Navy/Black

(Back)
Grey/Black

COLOURS:



STYLE NUMBER

J404M Mens, **J404L** Womens

SIZES: S-5XL Mens, S-2XL Womens

Mens vest
shown in Navy/Graphite

Womens vest
shown in Black/Cyan

Mens & Womens GENEVA Vest

New Generation Softshell with breathable BIZTECH™ technology.
Keeps you warm without overheating.

Outer: 100% Polyester

Inner: Bonded Contrast textured micro-ribbed fleece lining

FEATURES:

- Stand up collar with soft chin guard
- Contrast side zippered pockets with toggles
- Scalloped longer back tail
- Water Repellent rating - 3000mm inner membrane
- Breathability rating - 3000g/m²
- Windproof

COLOURS:



STYLE NUMBER

J616M Mens, **J616L** Womens

SIZES: XS-5XL Mens, XS-2XL Womens

Mens vest
shown in Black/Lime

Womens vest
shown in Black/Silver Grey

Mens & Womens STEALTH TECH Vest

Hybrid style vest offers excellent warmth, flexibility and style for outdoor or cold-weather activities. Quilted, lightweight insulated polyfil on chest front creates air pockets of warmth without adding bulk.

Front Body: 100% Quilted Nylon Ripstop

Back: 95% Polyester, 5% Elastane Stretch Bonded Fleece

Insulation: 100% Hi-loft Polyfill

FEATURES:

- Insulated quilting on chest front for lightweight warmth
- Contrast front zipper and pockets
- Stand up collar with chin guard

COLOURS:



ACCESSORIES

 BIZ CORPORATES



STYLE NUMBER

99100

Mens
SPOT TIE

100% Polyester

SIZES: One Size

COLOURS:



STYLE NUMBER

99101

Mens
SELF STRIPE TIE

100% Polyester

SIZES: One Size

COLOURS:



STYLE NUMBER

99102

Mens
SINGLE CONTRAST STRIPE TIE

100% Polyester

SIZES: One Size

COLOURS:



STYLE NUMBER

99300

Mens LEATHER REVERSIBLE BELT

A quality reversible corporate belt that is versatile in function. Alternative waist style options with brown on one side and plain black on the reverse.

100% Leather

SIZES: 28-38, 40-50

COLOURS:

BLACK/
BROWN



STYLE NUMBER

99200

Womens LEATHER REVERSIBLE BELT

A quality reversible corporate belt, versatile in function. Alternative waist style options with red muted snake skin finish on one side and plain black on the reverse.

100% Leather

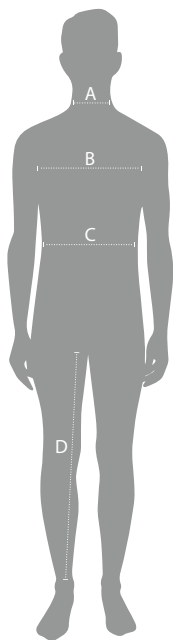
SIZES: 2-4, 6-8, 10-12, 14-16, 18-20, 22-24

COLOURS:

BLACK/
RED



MENS SIZING



HOW TO MEASURE

For your body measurements, please keep the tape measure taut and follow the below guidelines. We recommend asking a friend to measure you for accurate measurements.

A. NECK

Measure around the middle of your neck at collar level, keeping the tape loose to make allowance for comfort.

B. CHEST

Measure under your arms and across shoulder blades, around the fullest part of your chest. Hold one finger between body and tape.

C. WAIST

Measure around your natural waistline while holding one finger between body and tape.

D. IN SEAM:

Measure from the crotch seam to the bottom of the inside leg of a well-fitting pair of pants.

SHIRTS

| Size | | XS | S | M | L | XL | 2XL | 3XL | 4XL | 5XL |
|-------|----|-------|-------|-------|-------|-------|-------|-------|-------|-------|
| Neck | cm | 35-36 | 37-38 | 39-40 | 41-42 | 43-44 | 45-46 | 47-48 | 49-50 | 51-52 |
| Chest | cm | 92 | 97 | 102 | 107 | 112 | 117 | 122 | 127 | 132 |
| | in | 36 | 38 | 40 | 42 | 44 | 46 | 48 | 50 | 52 |

JACKETS, OUTERWEAR

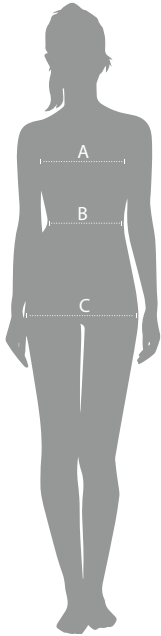
| Size | | XS | S | M | L | XL | 2XL | 3XL | 4XL | 5XL | | |
|-------|----|----|----|-----|-----|-----|-----|-----|-----|-----|-----|-----|
| Chest | cm | 92 | 97 | 102 | 107 | 112 | 117 | 122 | 127 | 132 | 137 | 142 |
| | in | 36 | 38 | 40 | 42 | 44 | 46 | 48 | 50 | 52 | 54 | 56 |
| Waist | cm | 77 | 82 | 87 | 92 | 97 | 102 | 107 | 112 | 117 | 122 | 127 |
| | in | 30 | 32 | 34 | 36 | 38 | 40 | 42 | 44 | 46 | 48 | 50 |

TROUSERS (PANTS)

| REGULAR FIT | | | | | | | | | | | | | |
|--|----|----|----|----|----|----|----|-----|-----|-----|-----|-----|-----|
| Waist | cm | 72 | 77 | 82 | 87 | 92 | 97 | 102 | 107 | 112 | 117 | 122 | 127 |
| | in | 28 | 30 | 32 | 34 | 36 | 38 | 40 | 42 | 44 | 46 | 48 | 50 |
| In Seam | cm | 80 | 81 | 81 | 82 | 82 | 83 | 83 | 84 | 84 | 84 | 84 | 84 |
| | in | 31 | 32 | 32 | 32 | 32 | 33 | 33 | 33 | 33 | 33 | 33 | 33 |
| STOUT FIT (available in selected styles) | | | | | | | | | | | | | |
| Waist | cm | — | — | — | — | — | — | — | 107 | 112 | 117 | 122 | 127 |
| | in | — | — | — | — | — | — | — | 42 | 44 | 46 | 48 | 50 |
| In Seam | cm | — | — | — | — | — | — | — | 81 | 81 | 82 | 82 | 83 |
| | in | — | — | — | — | — | — | — | 32 | 32 | 32 | 32 | 33 |

Note: All measurements provided are approximate and for reference only. The size conversion chart is a guide only, actual sizing may vary according to the style and fit of the garment. The waist specifications are the natural waist measurements, which have to be considered even though the garments will fit lower.

WOMENS SIZING



HOW TO MEASURE

For your body measurements, please keep the tape measure taut and follow the below guidelines. We recommend asking a friend to measure you for accurate measurements.

A. BUST

Measure under your arms and across shoulder blades, around the fullest part of your bust. Hold one finger between body and tape.

B. WAIST

Measure around your natural waistline while holding one finger between body and tape. This is the smallest part of your waist.

C. HIPS

Stand naturally (with heels apart) and measure around the fullest part of the hip (about 20 - 24 cm down from waist).

PANT AND SKIRT LENGTHS:

Pants and skirts will vary in length depending on the height of each individual and also their shape. All pants come with a hem allowance allowing for easy alterations.

SHIRTS, JACKETS, KNITWEAR, OUTWEAR

| Size | | XXS | XS | XS-S | S | M | L | L-XL | XL | 2XL | 3XL | 4XL | 5XL | | | |
|------|----|------|----|------|----|----|----|------|-----|-----|-----|-----|-----|-----|-----|-----|
| | | 0 | 2 | 4 | 6 | 8 | 10 | 12 | 14 | 16 | 18 | 20 | 22 | 24 | 26 | 28 |
| Bust | cm | 76.5 | 79 | 84 | 89 | 94 | 99 | 104 | 111 | 116 | 121 | 126 | 131 | 136 | 141 | 146 |
| | in | 30 | 31 | 33 | 35 | 37 | 39 | 41 | 44 | 46 | 48 | 50 | 52 | 54 | 56 | 57 |

PANTS, SKIRTS

| Size | | 0 | 2 | 4 | 6 | 8 | 10 | 12 | 14 | 16 | 18 | 20 | 22 | 24 | 26 | 28 |
|------|----|------|----|----|----|-----|-----|-----|-----|-----|-----|-----|-----|-----|-----|-----|
| Bust | cm | 58.5 | 61 | 66 | 72 | 76 | 81 | 86 | 93 | 98 | 103 | 108 | 113 | 118 | 123 | 128 |
| | in | 23 | 24 | 26 | 28 | 30 | 32 | 34 | 37 | 39 | 41 | 43 | 45 | 47 | 49 | 50 |
| Hip | cm | 86.5 | 89 | 94 | 99 | 104 | 109 | 114 | 121 | 126 | 131 | 136 | 141 | 146 | 151 | 156 |
| | in | 34 | 35 | 37 | 39 | 41 | 43 | 45 | 48 | 50 | 52 | 54 | 56 | 57 | 60 | 61 |

Note: All measurements provided are approximate and for reference only. The size conversion chart is a guide only, actual sizing may vary according to the style and fit of the garment. The waist specifications are the natural waist measurements, which have to be considered even though the garments will fit lower.

MEN



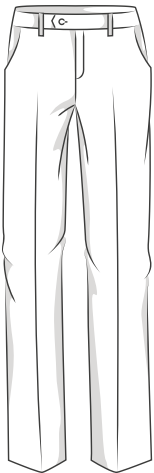
SLIM / EURO FIT

Tapered through the body for a tailored fit. Perfect for those after a slim modern fit.



CLASSIC / EXECUTIVE FIT

Classic fit, with slight tapering through the chest and shoulders. Suitable for all body shapes.



FLAT FRONT

Sits slightly below waistline, straight leg shape, straight leg opening.



PLEAT FRONT

Sits slightly below waistline, straight leg shape, relaxed fit through thighs.



SLIM LEG

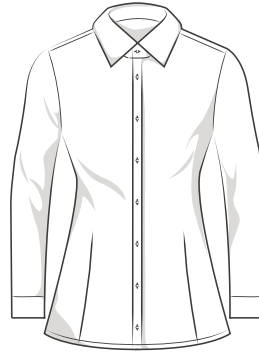
Sits slightly below waistline, tapered leg shape, narrow leg opening.



ADJUSTABLE WAIST FLAT FRONT

Sits slightly below waistline, straight leg shape and opening, hidden stretch waist band.

WOMEN



FITTED

Shaped and close fitting to the contours of the body.



SEMI-FITTED

Gently shaped through the torso. Follows the contours of the body. Suitable for most body shapes.



EASY FIT

Relaxed looser fit with a longer line. Straight through the torso.



SLIM LEG MID RISE

Sits slightly below waistline, tapered through leg, narrow leg opening with splits, hem sits at ankle.



HIPSTER FIT LOW RISE

Sits below waistline, straight through leg, wide leg opening, shaped waist band.



RELAXED FIT

Sits slightly below waistline, slightly tapered through leg, wide leg opening, shaped waist band.



ADJUSTABLE WAIST MID RISE

Sits on waistline, straight through leg, wide leg opening, hidden stretch waist band.

INDEX

| | | | | | |
|------------|----|---------------|----|-------------|----|
| 10111..... | 6 | 99200..... | 57 | S312LT..... | 36 |
| 10115..... | 7 | 99300..... | 57 | S522LL..... | 26 |
| 10117..... | 8 | BS610L..... | 41 | S522LS..... | 30 |
| 14011..... | 16 | BS724L..... | 40 | S522ML..... | 26 |
| 14015..... | 17 | BS724M..... | 40 | S522MS..... | 30 |
| 14017..... | 18 | BS10110..... | 41 | S770LL..... | 29 |
| 20111..... | 9 | BS10112R..... | 42 | S770LT..... | 34 |
| 20115..... | 10 | BS10322..... | 42 | S770ML..... | 25 |
| 24011..... | 19 | BS29210..... | 38 | S770MS..... | 28 |
| 24015..... | 20 | BS29320..... | 39 | S812LL..... | 27 |
| 40111..... | 32 | J307L..... | 50 | S812LS..... | 31 |
| 40310..... | 24 | J307M..... | 50 | S812ML..... | 27 |
| 40311..... | 33 | J404L..... | 54 | S812MS..... | 31 |
| 40320..... | 24 | J404M..... | 54 | SW520L..... | 51 |
| 50111..... | 5 | J515M..... | 52 | SW520M..... | 51 |
| 54011..... | 15 | J616L..... | 54 | SW932M..... | 53 |
| 70112..... | 2 | J616M..... | 54 | T301LS..... | 48 |
| 74012..... | 12 | LB3600..... | 35 | T301MS..... | 48 |
| 80111..... | 2 | LC417L..... | 23 | T800LS..... | 48 |
| 84011..... | 12 | P300LS..... | 44 | T800MS..... | 48 |
| 90111..... | 3 | P300MS..... | 44 | WP417M..... | 22 |
| 90112..... | 4 | P405LS..... | 45 | | |
| 94011..... | 13 | P405MS..... | 45 | | |
| 94012..... | 14 | P706LS..... | 46 | | |
| 99100..... | 56 | P706MS..... | 46 | | |
| 99101..... | 56 | P815LS..... | 47 | | |
| 99102..... | 56 | P815MS..... | 47 | | |



HEAD OFFICE

Unit 110 – 205 Quarry Park Blvd SE, Calgary, Alberta, T2C 3E7

P 1.855.592.7444 **W** markscommercial.ca