



TARANTULA



T W E N T Y T W E N T Y O N E
I N D U S T R I A L

FOOTWEAR



CONTENTS

MEN'S

8 INCH BOOTS	1
METGUARDS	16
6 INCH BOOTS	19
HIKERS	27
CASUAL	36
ANTI-SLIP	44
STATIC DISSIPATIVE	48
WET WEATHER	50
WINTER BOOTS	56
DUTY BOOTS	60

WOMEN'S

8 INCH BOOTS	62
6 INCH BOOTS	65
HIKERS	69
CASUALS	73
ANTI-SLIP	77
STATIC DISSIPATIVE	80
WET WEATHER	82
WINTER BOOTS	84

It's nice to look forward to "lacing them up" in the morning.

It feels good to market industrial footwear to the workforce across Canada that is built well with innovations that keep your feet comfortable over the course of a long work day.

From moisture wicking that prevents excessive perspiration, to lighter insulations for comfortable feet on colder days, to anti-slip soles like our exclusive Tarantula Anti-Slip.

We take pride in what we sell to you, the workers across Canada who "lace them up" to keep this country moving forward.

Thank you.



3 CONVENIENT WAYS TO SHOP FOR COMPANY FOOTWEAR

It's never been easier for company employees to purchase industrial footwear at your favorite Mark's store.



CLIENT SAVINGS CARD

Show the card at any Mark's store to receive your specified discount for a variety of store items shown on the card.

These cards are re-useable and valid until the expiry date found at the bottom of the card. The card must be presented for discounts to be applied against regular priced items.

In the event of an item being sale priced, the lower price will apply.

STYLE #	DESCRIPTION	COLOR	QTY	SIZE	PRICE
240400-0000	WELLS DOWNTON 8 INCH 10 STEP WORK BOOT	Black			118.00
240400-0001	WELLS DOWNTON 8 INCH 10 STEP WORK BOOT	Dark Brown			118.00
240400-0002	WELLS DOWNTON 8 INCH 10 STEP WORK BOOT	Black			118.00
240400-0003	WELLS DOWNTON 8 INCH 10 STEP WORK BOOT	Black			118.00
240400-0004	WELLS DOWNTON 8 INCH 10 STEP WORK BOOT	Black			118.00
240400-0005	WELLS DOWNTON 8 INCH 10 STEP WORK BOOT	Black			118.00
240400-0006	WELLS DOWNTON 8 INCH 10 STEP WORK BOOT	Black			118.00
240400-0007	WELLS DOWNTON 8 INCH 10 STEP WORK BOOT	Black			118.00
240400-0008	WELLS DOWNTON 8 INCH 10 STEP WORK BOOT	Black			118.00
240400-0009	WELLS DOWNTON 8 INCH 10 STEP WORK BOOT	Black			118.00
240400-0010	WELLS DOWNTON 8 INCH 10 STEP WORK BOOT	Black			118.00
240400-0011	WELLS DOWNTON 8 INCH 10 STEP WORK BOOT	Black			118.00
240400-0012	WELLS DOWNTON 8 INCH 10 STEP WORK BOOT	Black			118.00
240400-0013	WELLS DOWNTON 8 INCH 10 STEP WORK BOOT	Black			118.00
240400-0014	WELLS DOWNTON 8 INCH 10 STEP WORK BOOT	Black			118.00
240400-0015	WELLS DOWNTON 8 INCH 10 STEP WORK BOOT	Black			118.00
240400-0016	WELLS DOWNTON 8 INCH 10 STEP WORK BOOT	Black			118.00
240400-0017	WELLS DOWNTON 8 INCH 10 STEP WORK BOOT	Black			118.00
240400-0018	WELLS DOWNTON 8 INCH 10 STEP WORK BOOT	Black			118.00
240400-0019	WELLS DOWNTON 8 INCH 10 STEP WORK BOOT	Black			118.00
240400-0020	WELLS DOWNTON 8 INCH 10 STEP WORK BOOT	Black			118.00
240400-0021	WELLS DOWNTON 8 INCH 10 STEP WORK BOOT	Black			118.00
240400-0022	WELLS DOWNTON 8 INCH 10 STEP WORK BOOT	Black			118.00
240400-0023	WELLS DOWNTON 8 INCH 10 STEP WORK BOOT	Black			118.00
240400-0024	WELLS DOWNTON 8 INCH 10 STEP WORK BOOT	Black			118.00
240400-0025	WELLS DOWNTON 8 INCH 10 STEP WORK BOOT	Black			118.00
240400-0026	WELLS DOWNTON 8 INCH 10 STEP WORK BOOT	Black			118.00
240400-0027	WELLS DOWNTON 8 INCH 10 STEP WORK BOOT	Black			118.00
240400-0028	WELLS DOWNTON 8 INCH 10 STEP WORK BOOT	Black			118.00
240400-0029	WELLS DOWNTON 8 INCH 10 STEP WORK BOOT	Black			118.00
240400-0030	WELLS DOWNTON 8 INCH 10 STEP WORK BOOT	Black			118.00
240400-0031	WELLS DOWNTON 8 INCH 10 STEP WORK BOOT	Black			118.00
240400-0032	WELLS DOWNTON 8 INCH 10 STEP WORK BOOT	Black			118.00
240400-0033	WELLS DOWNTON 8 INCH 10 STEP WORK BOOT	Black			118.00
240400-0034	WELLS DOWNTON 8 INCH 10 STEP WORK BOOT	Black			118.00
240400-0035	WELLS DOWNTON 8 INCH 10 STEP WORK BOOT	Black			118.00
240400-0036	WELLS DOWNTON 8 INCH 10 STEP WORK BOOT	Black			118.00
240400-0037	WELLS DOWNTON 8 INCH 10 STEP WORK BOOT	Black			118.00
240400-0038	WELLS DOWNTON 8 INCH 10 STEP WORK BOOT	Black			118.00
240400-0039	WELLS DOWNTON 8 INCH 10 STEP WORK BOOT	Black			118.00
240400-0040	WELLS DOWNTON 8 INCH 10 STEP WORK BOOT	Black			118.00
240400-0041	WELLS DOWNTON 8 INCH 10 STEP WORK BOOT	Black			118.00
240400-0042	WELLS DOWNTON 8 INCH 10 STEP WORK BOOT	Black			118.00
240400-0043	WELLS DOWNTON 8 INCH 10 STEP WORK BOOT	Black			118.00
240400-0044	WELLS DOWNTON 8 INCH 10 STEP WORK BOOT	Black			118.00
240400-0045	WELLS DOWNTON 8 INCH 10 STEP WORK BOOT	Black			118.00
240400-0046	WELLS DOWNTON 8 INCH 10 STEP WORK BOOT	Black			118.00
240400-0047	WELLS DOWNTON 8 INCH 10 STEP WORK BOOT	Black			118.00
240400-0048	WELLS DOWNTON 8 INCH 10 STEP WORK BOOT	Black			118.00
240400-0049	WELLS DOWNTON 8 INCH 10 STEP WORK BOOT	Black			118.00
240400-0050	WELLS DOWNTON 8 INCH 10 STEP WORK BOOT	Black			118.00

CLIENT VOUCHER

Simply show the voucher at any Mark's store to receive the specified discount shown for a variety of store items listed on the voucher.

The voucher must be shown for discounts to be applied against regular priced items. In the event of an item being sale priced, the lower price will apply.



NEW FOR 2021!

CLIENT INDUSTRIAL FOOTWEAR PURCHASING CARD

Our new footwear purchasing card contains all the benefits of the voucher combined with a more flexible client reporting experience and easier in-store purchasing.

The card is only to be used on industrial footwear.





TARANTULA

M E N ' S

8 INCH BOOTS



DAKOTA

AGGRESSOR

8 INCH BOOTS

STSP WORK BOOT

CSA GRADE 1 STEEL TOE, STEEL PLATE. ESR.

STYLE: 5ANADK2-8500

SIZES: 7-11,12,13,14



- Buffalo Nubuck leather upper.
- Polyurethane toe guard.
- Breathable, Air Mesh® lining.
- Removable EVA footbed.
- One density polyurethane midsole/outsole.



DAKOTA

8 INCH BOOTS

"877" STSP WORK BOOT

CSA GRADE 1 STEEL TOE, STEEL PLATE. ESR.

STYLE: 5ANADK5-8877

SIZES: 7-11,12,13,14



- Buffalo leather upper.
- DURATOE TPU guard.
- Breathable, moisture-wicking lining.
- Abrasion resistant heel counter.
- 200g T-MAX insulation.
- TARANTULA ANTI-SLIP rubber outsole.



Made for general construction applications, this Dakota work boot will have you working even when the weather turns cold and wet. It features T-MAX insulation that keeps your feet warm and comfortable without overheating. It comes with a removable 4 density EVA Ortholite foot bed and Quad Comfort cushioning and support for all-day comfort. The built-in FRESHTECH anti-microbial technology keeps your feet and shoes fresher through the long shifts on the job site. Full of comfort and safety, these boots offer a stress-free place for your feet.

DAKOTA

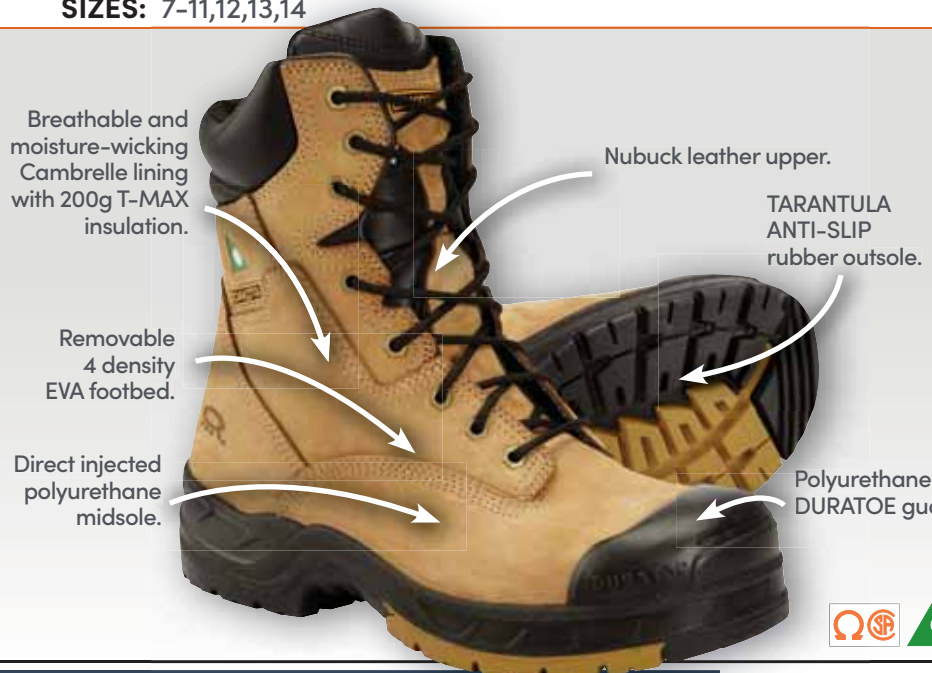
8 INCH BOOTS

"8006" STCP WORK BOOT

CSA GRADE 1 STEEL TOE, COMPOSITE PLATE. ESR.

STYLE: 5ANADK2-8006

SIZES: 7-11,12,13,14



DAKOTA

8 INCH BOOTS

"529" STSP INJECTED WELT WORK BOOT

CSA GRADE 1 STEEL TOE, STEEL PLATE. ESR.

STYLE: 5ANADK5-8529

SIZES: 7-12,13,14,15,16,17

Designed for durability in tough working conditions, these leather safety boots are ideal for construction and trades workers, builders and equipment operators. Full grain leather uppers with Duratoe toecaps to prevent abrasion. The boots are well-insulated for outdoor work, while offering breathable, moisture-wicking properties to keep your feet dry and comfortable. The soles of your feet benefit from Quad Comfort and Rubberlon midsoles, and rubber outsoles provide anti-slip traction for safety on slick and uneven ground.

Full grain leather upper.

Flexible polyurethane welt construction.

Cushioning Rubberlon midsole.

Moisture wicking and breathable DRI-TEC lining with 200g T-MAX insulation.

TARANTULA ANTI-SLIP rubber outsole.

DURATOE "529" TPU toecap.



DAKOTA

8 INCH BOOTS

"8518" STSP WORK BOOT

CSA GRADE 1 STEEL TOE, STEEL PLATE. ESR.

STYLE: 5ANADK9-8518

SIZES: 7-11,12,13,14

- Nubuck leather upper.
- Polyurethane DURATOE toe guard.
- DRI-TEC lining with FRESHTECH.
- 200g T-MAX insulation.
- Removable polyurethane foam footbed.
- PU midsole/TPU outsole.



DAKOTA

8 INCH BOOTS

"529" STSP WATERPROOF INJECTED WELT BOOT

CSA GRADE 1 STEEL TOE, STEEL PLATE. ESR.

STYLE: 5ANADK5-8529WP

SIZES: 7-11,12,13,14,15

- Waterproof leather upper.
- DURATOE "529" TPU guard.
- Moisture-wicking and breathable DRI-TEC lining with 200g T-MAX insulation.
- HYPER-DRI HD3 waterproof, breathable membrane.
- Cushioning Rubberlon midsole.
- TARANTULA ANTI-SLIP rubber outsole.



DAKOTA

8 INCH BOOTS

"8517" QUAD COMFORT STCP WORK BOOT

CSA GRADE 1 STEEL TOE, COMPOSITE PLATE. ESR.

STYLE: 5ANADK9-8517

SIZES: 7-11,12,13,14,15,16,17

- Full grain leather upper.
- FRESHTECH treated lining.
- Multiple density removable polyurethane footbed.
- 200g T-MAX insulation.
- Flexible poured polyurethane welt midsole.
- TARANTULA ANTI-SLIP rubber outsole.



DAKOTA

8 INCH BOOTS

"8537" QUAD COMFORT ATCP WORK BOOT

CSA GRADE 1 ALUMINUM TOE, COMPOSITE PLATE. ESR.

STYLE: 5ANADK9-8537

SIZES: 7-11,12,13,14

- Full grain leather upper with TPU/Kevlar® reinforced molded side quarter panels.
- Breathable lining with 200g T-MAX insulation.
- TPU DURATOE guard.
- Multiple density removable polyurethane footbed.
- Flexible poured PU welt midsole.
- TARANTULA ANTI-SLIP rubber outsole.



DAKOTA

8 INCH BOOTS

"8410" INJECTED CTCP WORK BOOT

CSA GRADE 1 COMPOSITE TOE, COMPOSITE PLATE. ESR.

STYLE: 5ANADK7-8410

SIZES: 7-11,12,13,14

These eight-inch Dakota men's safety boots have both composite toes and plates and DURATOE TPU caps shaped asymmetrically over the toes. These boots are a good choice for cold, moisture-prone work sites since they have our T-MAX lightweight, warmest insulation and breathable DRI-TEC linings. The boots have removable PU insoles and TARANTULA ANTI-SLIP rubber outsoles that help to prevent slips and falls.



DAKOTA

8 INCH BOOTS

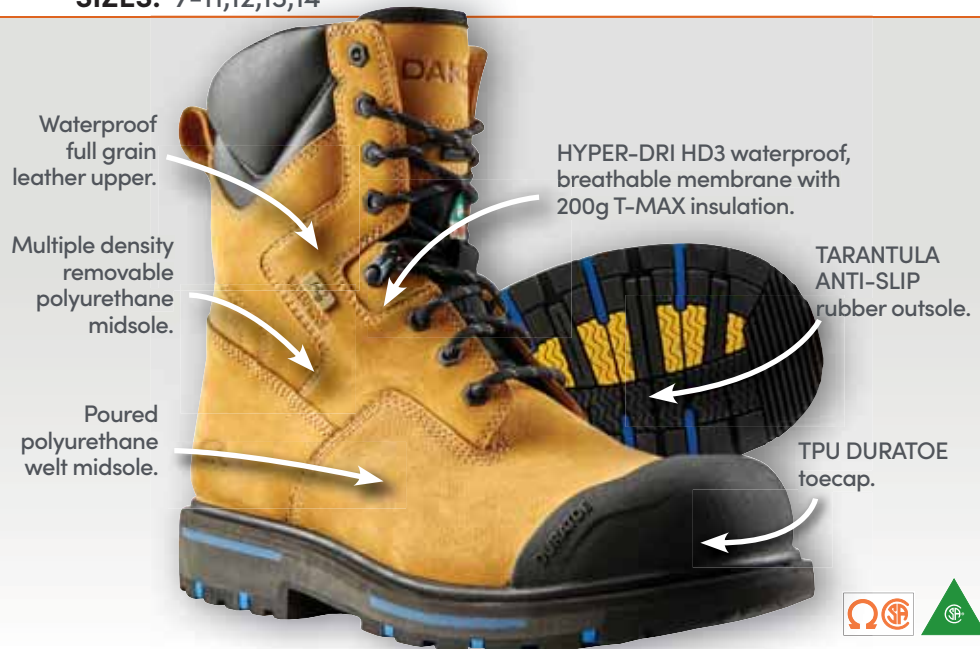
"8522" STSP QUAD COMFORT WATERPROOF WORK BOOT

CSA GRADE 1 STEEL TOE, STEEL PLATE. ESR.

STYLE: 5ANADK9-8522

SIZES: 7-11,12,13,14

From Dakota, these 8522 work boots are equipped with steel toes and plates and they're resistant to puncture and electric shock. Fully waterproof, the men's boots feature our T-MAX insulation for maximum warmth and QUAD COMFORT footwear technology which addresses shock absorption, weight distribution, cushioning and pressure displacement. With TARANTULA ANTI-SLIP outsoles, these boots reduce the likelihood that you'll slip and fall on wet or greasy surfaces.



DAKOTA

8 INCH BOOTS

"8550" CTSP WORK BOOT

CSA GRADE 1 COMPOSITE TOE, STEEL PLATE. ESR.

STYLE: 5ANADK0-8550

SIZES: 7-11,12,13,14

- Leather upper.
- DRI-TEC lining with FRESHTECH.
- 200g T-MAX insulation.
- Removable polyurethane sponge footbed.
- EVA midsole.
- DURATOE Axis Asymmetrical toe cap.
- TARANTULA ANTI-SLIP rubber outsole.



DAKOTA

8 INCH BOOTS

"8557" WATERPROOF STCP WORK BOOT

CSA GRADE 1 STEEL TOE, COMPOSITE PLATE. ESR.

STYLE: 5ANADK9-8557

SIZES: 7-11,12,13,14,15

- Waterproof full grain leather upper.
- TPU DURATOE TPU guard.
- Breathable lining with FRESHTECH.
- Removable multi-density PU footbed.
- 200g T-MAX insulation.
- HYPER-DRI HD3 waterproof, breathable membrane.
- Poured polyurethane midsole.
- VIBRAM® FIRE & ICE rubber outsole.



DAKOTA

8 INCH BOOTS

"8512" METAL FREE CTCP WORK BOOT

CSA GRADE 1 COMPOSITE TOE, COMPOSITE PLATE. ESR.

STYLE: 5ANADK9-8512

SIZES: 7-11,12,13,14

- Full grain leather upper.
 - TPU DURATOE guard.
 - DRI-TEC LINING with FRESHTECH.
 - Removable ETPU footbed.
 - Polyurethane midsole.
 - TARANTULA ANTI-SLIP rubber outsole.
- METAL FREE**



DAKOTA

8 INCH BOOTS

ADAPTIVE FIT CTCP WORK BOOT

CSA GRADE 1 COMPOSITE TOE, COMPOSITE PLATE. ESR.

STYLE: 5ANADK9-8521

SIZES: 7-11,12,13,14

- Full grain leather upper.
- DRI-TEC lining with FRESHTECH.
- Heated moldable lining and footbed for custom comfort.
- 200g T-MAX insulation.
- DURATOE Axis Asymmetrical composite toe.
- TARANTULA ANTI-SLIP rubber outsole.



From Dakota, these men's work boots are made of waterproof leather with protective toe caps. DURATOE is a flexible and extremely durable molded toe cap applied to the outside of the work boot. It's built to withstand hard wearing conditions, extending the life of the toe box. These boots also feature our HD3 waterproof membrane to keep feet dry and T-MAX insulation for added warmth when the temperature dips. Safety features include composite toes and plates and the boots are resistant to electric shock and puncture. TARANTULA ANTI-SLIP outsoles provide the ultimate in slip protection by reducing the likelihood that you'll slip and fall on wet and/or greasy surfaces.*

DAKOTA

8 INCH BOOTS

"8516" WATERPROOF CTCP WORK BOOT

CSA GRADE 1 COMPOSITE TOE, COMPOSITE PLATE. ESR.

STYLE: 5ANADK9-8516

SIZES: 7-11,12,13,14



DAKOTA

8 INCH BOOTS

"8510" VIBRAM ARCTIC GRIP CTCP WORK BOOT

CSA GRADE 1 COMPOSITE TOE, COMPOSITE PLATE. ESR.

STYLE: 5ANADK7-8510

SIZES: 7-11,12,13,14

From Dakota, these leather work boots have tough leather uppers with DURATOE durable toe caps. Designed for winter outdoor wear, they're equipped with our light and warm T-MAX insulation. QUAD COMFORT multi-component technology keeps your feet on the job longer. The inner boot is protected with our FRESHTECH antimicrobial treatment for odour control. These boots comply with CSA Grade 1 requirements for composite toes and plates, electric shock resistance and superior-grade puncture resistance.



DAKOTA

8 INCH BOOTS

"8560" BALLISTIC NYLON CTCP WORK BOOT

CSA GRADE 1 COMPOSITE TOE, COMPOSITE PLATE. ESR.

STYLE: 5ANADK0-8560

SIZES: 7-11,12,13,14

- Ballistic nylon upper with water-resistant backing.
- DRI-TEC lining with FRESHTECH.
- Removable ETPU footbed.
- 200g T-MAX insulation.
- HYPER-DRI HD3 waterproof, breathable membrane.
- Multi-density PU midsole.
- TARANTULA ANTI-SLIP rubber outsole.



DAKOTA

8 INCH BOOTS

"IRONWORKER" UNLINED STSP WORK BOOT

CSA GRADE 1 STEEL TOE, STEEL PLATE. ESR.

STYLE: 5ANADK8024B

SIZES: 7-11,12,13

- Oiled full grain leather upper with lace-to-toe lacing system.
- Abrasion resistant toe guard.
- Unlined.
- Removable triple density footbed.
- Wedge rubberlon outsole.



DAKOTA

8 INCH BOOTS

"523" LINED IRONWORKER STSP WORK BOOT

CSA GRADE 1 STEEL TOE, STEEL PLATE. ESR.

STYLE: 5ANADK8-8523

SIZES: 7-11,12,13,14

- Buffalo leather upper.
- Abrasion resistant toe guard.
- Breathable and moisture-wicking DRI-TEC lining with FRESHTECH.
- 200g T-MAX insulation.
- Removable triple density footbed.
- Wedge rubberlon outsole.



HH
workwear

8 INCH BOOTS

LEATHER CTCP WORK BOOT

CSA GRADE 1 COMPOSITE TOE, COMPOSITE PLATE. ESR.

STYLE: HHS212040

SIZES: 7-11,12,13,14

- Waterproof leather upper.
- HELLY TECH® waterproof membrane.
- DRI-TEC lining with FRESHTECH.
- 200g T-MAX insulation.
- Desma injected polyurethane midsole.
- Helly Grip rubber outsole.

EXCLUSIVELY AT
Mark's



HH
workwear

8 INCH BOOTS

ULTRA LIGHT ATCP WORK BOOT

CSA GRADE 1 ALUMINUM TOE, COMPOSITE PLATE. ESR.

STYLE: HHS172003

SIZES: 7-11,12,13,14

An ultra-light eight-inch boot from Helly Hansen, this design has a nylon upper protected with a TPU toe cap. For safety, the boots are equipped with aluminum toes and composite plates. These men's work boots feature breathable, moisture-wicking linings to keep your feet dry. Lightweight EVA midsoles and removable high-cushioning foam support your feet comfortably during long shifts.



EXCLUSIVELY AT
Mark's



8 INCH BOOTS

WATERPROOF CTCP WORK BOOT

CSA GRADE 1 COMPOSITE TOE, COMPOSITE PLATE. ESR.

STYLE: HHF182004

SIZES: 7-11,12,13,14

Constructed with waterproof leather uppers and featuring the brand's Helly Tech® waterproof, windproof and breathable technology, these Helly Hansen work boots will keep your feet dry in wet environments. 400 g T-MAX insulation helps keep the heat in and the cold out, while Air Frame linings add comfort. The high-cut, lace-up boots have anti-slip rubber outsoles for improved traction. Safety components include composition toes and plates, electric shock resistance and puncture resistance.

EXCLUSIVELY AT
Mark's



8 INCH BOOTS

HIGH ABRASION ATCP WORK BOOT

CSA GRADE 1 ALUMINUM TOE, COMPOSITE PLATE. ESR.

STYLE: HHS192005

SIZES: 7-11,12,13,14

- High abrasion Lenzi woven upper.
- DRI-TEC lining with FRESHTECH.
- 200g T-MAX insulation.
- Removable open cell EVA footbed.
- Lightweight EVA midsole.
- Rubber outsole.

EXCLUSIVELY AT
Mark's



8 INCH BOOTS

EXTRALIGHT® CTCP WORK BOOT

CSA GRADE 1 COMPOSITE TOE, COMPOSITE PLATE. ESR.

STYLE: HHS202023

SIZES: 7-11,12,13,14

- Leather upper.
- TPU toe cap.
- Breathable Air Mesh® lining.
- Removable Ortholite® footbed.
- Extralight® midsole.
- Slip-resistant rubber outsole pods.

EXCLUSIVELY AT
Mark's





8 INCH BOOTS

HELLY HANSEN CTCP WORK BOOT

CSA GRADE 1 COMPOSITE TOE, COMPOSITE PLATE. ESR.

STYLE: HHS202022

SIZES: 7-11,12,13,14

- Full grain leather upper.
- TPU toe and heel guards.
- HELLY TECH Performance waterproof membrane.
- Removable polyurethane footbed.
- Injected polyurethane midsole.
- Oil, acid and slip-resistant rubber outsole.

EXCLUSIVELY AT
Mark's



8 INCH BOOTS

"SENTRY" CTCP WORK BOOT

CSA GRADE 1 COMPOSITE TOE, COMPOSITE PLATE. ESR.

STYLE: T40A4NQ9FWE

SIZES: 7-11,12,13,14,15

- Full grain leather upper with bellows tongue.
- Abrasion resistant TECTUFF® leather back strap.
- 200g THINSULATE® insulation.
- Removable premium comfort polyurethane footbed.
- Polyurethane midsole.
- Slip-resistant heavy duty TPU outsole.



KODIAK®

8 INCH BOOTS

"KODIAK BLUE PLUS" ATCP WORK BOOT

CSA GRADE 1 ALUMINUM TOE, COMPOSITE PLATE. ESR.

STYLE: 310090

SIZES: 7,8-11,12,13,14,15

- Premium waterproof leather upper with sealed seams.
- Triple stitched molded TPU toe and heel guard.
- Moisture-wicking lining.
- Removable COMFORTZONE® dual density footbed.
- Anatomical off-centre last.
- Polyurethane midsole.
- Oil resistant rubber outsole.



8 INCH BOOTS

"HAULER" WATERPROOF CTCP WORK BOOT

CSA GRADE 1 COMPOSITE TOE, COMPOSITE PLATE. ESR.

STYLE: P717629

SIZES: 7-11,12,13

- Full grain waterproof leather upper.
- Breathable nylon mesh lining with 400g Thinsulate™ insulation.
- TPU toe guard.
- Removable Nyllex/polyurethane footbed.
- Slip and abrasion resistant deep cleated rubber outsole.





8 INCH BOOTS

"CONTROL" WATERPROOF CTCP WORK BOOT

CSA GRADE 1 COMPOSITE TOE, COMPOSITE PLATE. ESR.

STYLE: P720211

SIZES: 7-11,12,13

Sturdy yet comfortable, these waterproof work boots from CATERPILLAR will keep your feet dry and warm throughout your work day. Constructed with full grain waterproof leather uppers and waterproof membranes, they offer protection in wet weather and moisture-prone work sites. The EVA insoles are removable in favour of orthotics and 200gr Thinsulate™ insulation provides lightweight warmth. Added safety is ensured with slip-resistant rubber outsoles, composition toes and plates, and CSA Omega electric shock resistance. These lace-up workboots include quick-tie clasps on the upper portion and rear pull tabs for easy on-off.



8 INCH BOOTS

"THERMOSTATIC" VIBRAM ARCTIC GRIP CTCP BOOT

CSA GRADE 1 COMPOSITE TOE, COMPOSITE PLATE. ESR.

STYLE: P721620

SIZES: 7-11,12,13

- Full grain leather upper.
 - Waterproof membrane.
 - 400g Thinsulate™ insulation.
 - "EASE" comfort footbed.
 - Vibram® Arctic Grip Pro rubber outsole.
- AVAILABLE FALL 2021



WOLVERINE

8 INCH BOOTS

"I-90 DURASHOCKS WEDGE" CTCP WORK BOOT

CSA GRADE 1 COMPOSITE TOE, COMPOSITE PLATE. ESR.

STYLE: W17463

SIZES: 7-11,12,13

- Full grain leather upper.
- Carbon Max Toe.
- Unlined.
- Polyurethane midsole.
- I-90 abrasion resistant TPU pads in outsole for durability and comfort.



WOLVERINE

8 INCH BOOTS

"YUKON" DURASHOCKS[®] CTCP WORK BOOT

CSA GRADE 1 COMPOSITE TOE, COMPOSITE PLATE. ESR.

STYLE: W197107

SIZES: 7-12,13

The Yukon work boot from Wolverine is designed for maximum durability and performance. DuraShocks[®] technology insoles deliver comfort while you work and the chiseled-edge rubber lug outsole provides superior grip in varied conditions. Featuring Wolverine's all new freedom toe, a large toe box offers more room and comfort. The Yukon is crafted in full grain leather, treated to be waterproof and breathable.



Timberland PRO

8 INCH BOOTS

"GRIDWORKS ALLOY" ATCP WORK BOOT

CSA GRADE 1 ALLOY TOE, STEEL PLATE. ESR.

STYLE: TB0A12EZ214

SIZES: 7,8-11,12,13

- Full grain leather upper.
- Mesh lining with antimicrobial treatment.
- Waterproof membrane.
- Removable anti-fatigue technology footbed.
- Lightweight, cushioning EVA midsole.
- All weather TPU outsole.



Timberland PRO

AVAILABLE IN QUEBEC ONLY
8 INCH BOOTS

"ENDURANCE HD" CTCP WORK BOOT

CSA GRADE 1 COMPOSITE TOE, COMPOSITE PLATE. ESR.

STYLE: TB0A1Q6Z001

SIZES: 7-11,12,13,14,15

- Full grain waterproof leather upper.
- Breathable mesh lining with antimicrobial treatment.
- 200g Thermolite[®] insulation.
- Waterproof membrane.
- Removable anti-fatigue PU footbed.
- Polyurethane midsole.
- All-weather TPU outsole.





8 INCH BOOTS

"ENDURANCE HD" CTCP WORK BOOT

CSA GRADE 1 COMPOSITE TOE, COMPOSITE PLATE. ESR.

STYLE: TB0A1Q5U214

SIZES: 7-11,12,13,14,15

From Timberland PRO, these Endurance HD eight-inch boots have CSA Grade 1 composite toes and plates. The waterproof leather boots also feature all-weather outsoles for protection on outdoor work sites. Antimicrobial linings stay fresh and lightweight insulation keeps your feet warm and comfortable. When you spend long hours on your feet, you'll appreciate the insoles in these boots which are built using anti-fatigue technology.

EXCLUSIVELY AT
Mark's



8 INCH BOOTS

"BOONDOCK" WATERPROOF CTCP WORK BOOT

CSA GRADE 1 COMPOSITE TOE, COMPOSITE PLATE. ESR.

STYLE: 89645

SIZES: 7-11,12,13,14,15

- Full grain waterproof leather upper.
- Breathable mesh lining with 200g Thermolite® insulation.
- Molded Vibram® rubber toe cap.
- Removable anti-fatigue technology footbed.
- Polyurethane midsole with anti-fatigue technology.
- Vibram® Fire & Ice rubber outsole.



AVAILABLE IN QUEBEC ONLY
8 INCH BOOTS

"BOONDOCK" BALLISTIC CTCP WORK BOOT

CSA GRADE 1 COMPOSITE TOE, COMPOSITE PLATE. ESR.

STYLE: TB0A1VYP001

SIZES: 7-11,12,13,14,15

- Durable ballistic nylon double weave upper.
- Molded Vibram® rubber toe cap.
- Breathable mesh lining with antimicrobial treatment and 200g Thermolite® insulation.
- Waterproof membrane.
- Removable anti-fatigue polyurethane footbed.
- Polyurethane midsole.
- Vibram® Arctic Grip™ rubber outsole.



carhartt

8 INCH BOOTS

"WORK FLEX" CTCP LEATHER WORK BOOT

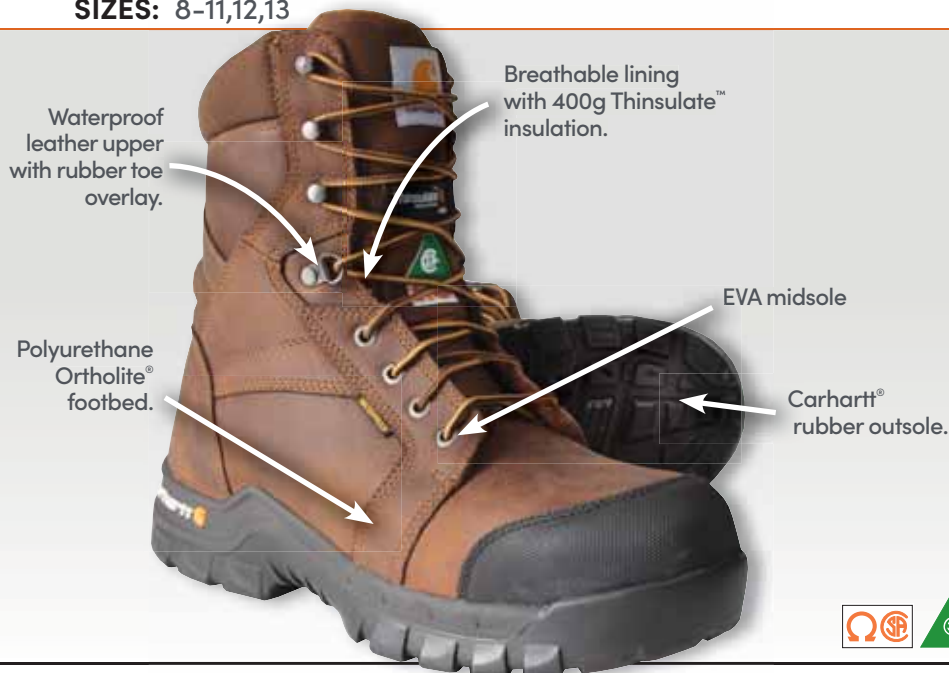
CSA GRADE 1 COMPOSITE TOE, COMPOSITE PLATE. ESR.

STYLE: CMR8939

SIZES: 8-11,12,13

Suitable for use in trade work, construction and outdoor pursuits, these boots feature Thinsulate insulation and breathable linings to keep your feet warm without overheating.

The Ortholite insoles on these CSA comp-toed workboots offer five layers of cushioning for long-lasting comfort.



carhartt

8 INCH BOOTS

"FLEX MUD WELLINGTON" 10" CTCP WORK BOOT

CSA GRADE 1 COMPOSITE TOE, COMPOSITE PLATE. ESR.

STYLE: CMR1999

SIZES: 8-11,12,13

- Full grain leather upper.
- Polyurethane coated leather half shell.
- Breathable lining with 400g 3M™ Thinsulate™ insulation.
- Storm Defender® waterproof, breathable technology.
- Polyurethane/Otholite® footbed.
- EVA midsole.
- Carhartt® rubber outsole.



carhartt

8 INCH BOOTS

"GROUND FORCE" CTCP WATERPROOF BOOT

CSA GRADE 1 COMPOSITE TOE, COMPOSITE PLATE. ESR.

STYLE: CMR8959

SIZES: 8-12,13,14,15

- Black oil tanned leather upper.
- Storm Defender® waterproof, breathable technology.
- 400g 3M™ Thinsulate™ insulation.
- Removable dual foam Insite® Technology footbed.
- Lightweight EVA midsole.
- Carhartt® rubber Ground Force® outsole.



ROYER

8 INCH BOOTS

METAL FREE CTCP WORK BOOT

CSA GRADE 1 COMPOSITE TOE, COMPOSITE PLATE. ESR.

STYLE: 10-8680

SIZES: 8-11,12,13

Made with full grain leather and Armortex fabric, these metal-free workboots are designed for workplaces where scanners are used, such as power plants and mining operations. This pair features a waterproof membrane and sturdy rubber outsole for better protection in variable outdoor conditions. The soft footbed and breathable lining keep feet feeling fresh and comfortable all day long.



ROYER

AVAILABLE IN QUEBEC ONLY
8 INCH BOOTS

"FLX" WATERPROOF CTCP WORK BOOT

CSA GRADE 1 COMPOSITE TOE, COMPOSITE PLATE. ESR.

STYLE: 8600FLX

SIZES: 7-11,12,13,14



KEEN

8 INCH BOOTS

"PHILADELPHIA" CTCP WATERPROOF WORK BOOT

CSA GRADE 1 COMPOSITE TOE, COMPOSITE PLATE. ESR.

STYLE: 1024259

SIZES: 7-11,12,13,14,15





M E N ' S

METGUARDS

WHY METATARSAL WORK BOOTS ARE SO IMPORTANT IN THE WORKPLACE.



**METATARSAL GUARD
AREA OF PROTECTION**

**SAFETY TOE
AREA OF PROTECTION**

Metatarsal is the name given to the five bones found in the middle of the foot that form the arch and connected to tissues, ligaments and tendons, providing movement in the foot. This area of the foot is vulnerable to falling objects as there is virtually no flesh, muscle or fat protecting these important bones which makes wearing boots with metatarsal guards so important.

Safety Toe Versus Metatarsal Work Boots

The safety toe will protect primarily the big toe and two to three toes leaving the rest of the foot back to the ankle area susceptible to injury. In this small unprotected area there is 26 bones, 33 joints, 107 ligaments, 19 muscles plus tendons and nerves which can be protected with the addition of a metatarsal guard in work boots.

Choosing A Metguard Boot

There are two types of metatarsal guards - external and internal. They both have to meet the same CSA Z195-14 and ASTM standards, using a specific impact test for metatarsal guards. A 50-pound weight in the shape of a 1 inch diameter bar is dropped eighteen inches onto the metatarsal area of the shoe, resulting in a 75 foot-pound impact to the metatarsal guard. A full 1-inch clearance must be maintained under the metatarsal impact area on the inside of the shoe. The results are clearly seen and measured from a soft wax foot-form, which was placed within the shoe before the test and removed afterward to measure the deflection of the guard during impact.

The Difference Between External and Internal Guards?

External metatarsal guards have the layer of protection on the outside of the footwear, like a turtle's shell. A protective material is usually attached to the toe of the shoe and extends upwards and covers the entire top of the foot. Internal metatarsal guards have the layer of flexible protection on the inside of the footwear offering more comfort. Both guard designs have been improved over the years to offer a high degree of protection with improved resilience and comfort.

Metatarsal boots are very necessary in many environments. It is important to remember that certain industries and companies have specific requirements, regarding which guard they prefer; however, advanced technology has made either option much safer, and more comfortable, in addition to being available in a myriad of styles.

DAKOTA

METGUARDS

"QUAD COMFORT" STCP INTERNAL METGUARD

CSA GRADE 1 STEEL TOE, COMPOSITE PLATE. ESR.

STYLE: 5ANADK3-8112

SIZES: 7-11,12,13,14,15



- Full grain leather upper with side zipper.
- Breathable, moisture wicking mesh lining with T-MAX insulation.
- Injected polyurethane midsole.
- Removable quadruple density footbed.
- Internal metatarsal protection.
- TARANTULA ANTI-SLIP rubber outsole.



DAKOTA

METGUARDS

"8514" STSP EXTERNAL METGUARD

CSA GRADE 1 STEEL TOE, STEEL PLATE. ESR.

STYLE: 5ANADK7-8514

SIZES: 7-11,12,13,14,15



- Full grain leather upper.
- External metatarsal protection.
- Breathable, moisture wicking DRI-TEC lining.
- 200g T-MAX insulation.
- Removable polyurethane footbed.
- Poured PU welt midsole.
- TARANTULA ANTI-SLIP rubber outsole.



DAKOTA

METGUARDS

"8415" CTCP INTERNAL METGUARD

CSA GRADE 1 COMPOSITE TOE, COMPOSITE PLATE. ESR.

STYLE: 5ANADK7-8415

SIZES: 7-11,12,13,14,15



- Full grain leather upper.
- DURATOE Axis Asymmetrical toe guard.
- Breathable, moisture-wicking DRI-TEC LINING.
- 200g T-MAX insulation.
- Removable polyurethane footbed.
- Internal metatarsal protection.
- TARANTULA ANTI-SLIP rubber outsole.



KEEN

METGUARDS

"PHILADELPHIA" CTCP INTERNAL METGUARD

CSA GRADE 1 COMPOSITE TOE, COMPOSITE PLATE. ESR.

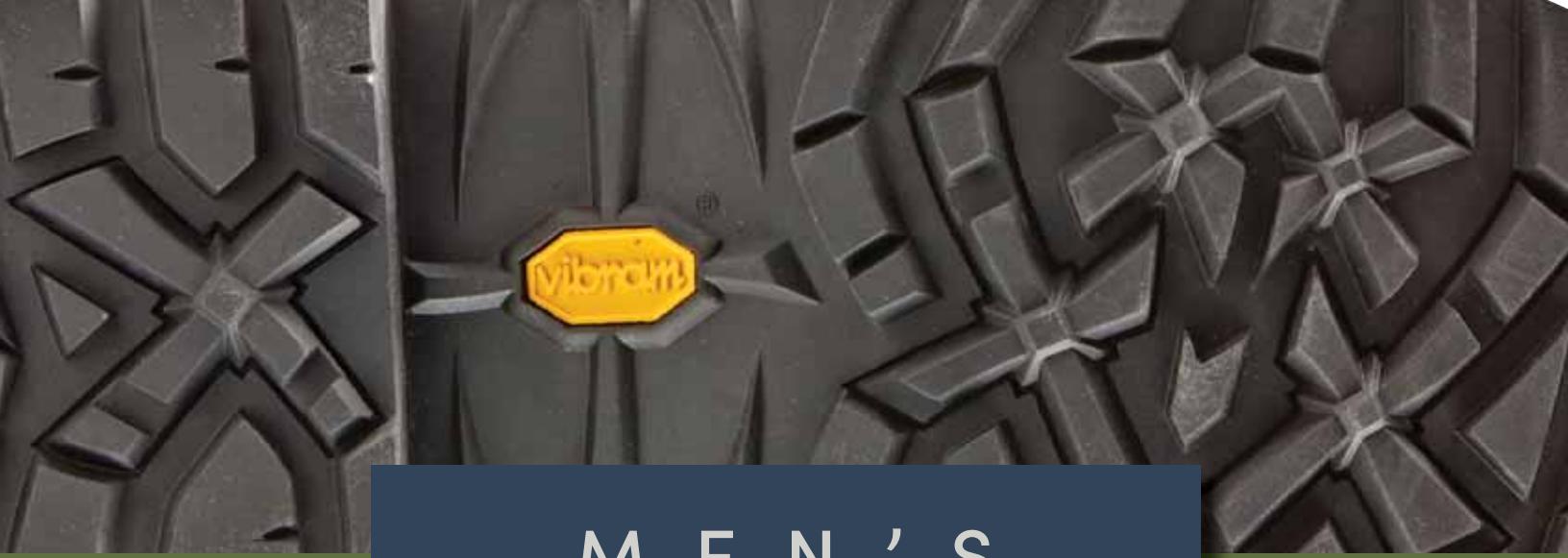
STYLE: 1022091

SIZES: 7-12,13,14,15



- Full grain waterproof leather upper.
- KEEN DRY waterproof, breathable lining.
- Internal metatarsal protection.
- Heat, oil and slip resistant rubber outsole.
- Removable, metatomical polyurethane footbed.





M E N ' S

6 INCH BOOTS



AGGRESSOR

6 INCH BOOTS

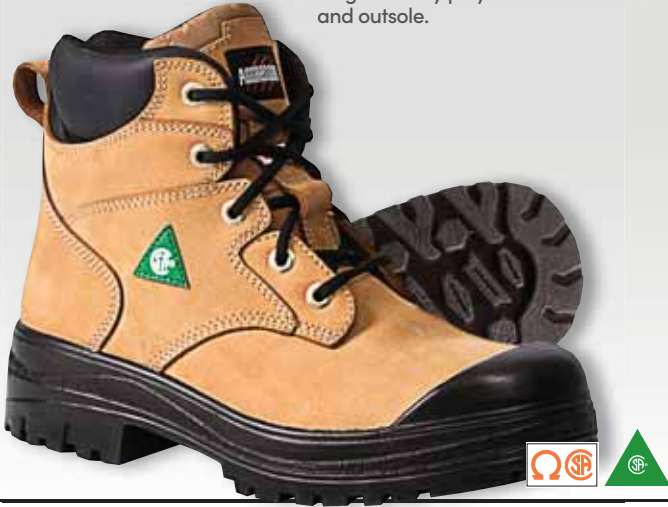
STSP WORK BOOT

CSA GRADE 1 STEEL TOE, STEEL PLATE. ESR.

STYLE: 5ANBDK2-6500

SIZES: 7-11,12,13,14

- Buffalo Nubuck leather upper.
- Polyurethane toe guard.
- Breathable Air Mesh lining.
- Removable EVA footbed.
- Single density polyurethane midsole and outsole.



DAKOTA

6 INCH BOOTS

"877" STSP WORK BOOT

CSA GRADE 1 STEEL TOE, STEEL PLATE. ESR.

STYLE: 5ANBDK6-6877

SIZES: 7-11,12,13,14

- Black Buffalo leather upper.
- TPU DURATOE guard.
- Abrasion resistant heel counter.
- Breathable Air Mesh lining with 200g T-MAX insulation.
- Removable EVA foam footbed.
- Polyurethane injected midsole.
- TARANTULA ANTI-SLIP rubber outsole.



DAKOTA

6 INCH BOOTS

"6006" STCP WORK BOOT

CSA GRADE 1 STEEL TOE, COMPOSITE PLATE. ESR.

STYLE: 5ANBDK2-6006

SIZES: 7-11,12,13,14,15

- Nubuck leather upper.
- Polyurethane DURATOE guard.
- Breathable, moisture wicking Cambrelle lining with 200g T-MAX insulation.
- Removable 4 density EVA Ortholite® footbed.
- Direct injected polyurethane midsole.
- TARANTULA ANTI-SLIP rubber outsole.



DAKOTA

6 INCH BOOTS

"6518" STSP WORK BOOT

CSA GRADE 1 STEEL TOE, STEEL PLATE. ESR.

STYLE: 5ANBDK9-6518

SIZES: 7-11,12,13,14

- Nubuck leather upper.
- DRI-TEC lining with FRESHTECH.
- 200g T-MAX insulation.
- Removable polyurethane foam footbed.
- Polyurethane midsole.
- TPU outsole.



DAKOTA

6 INCH BOOTS

"529" STSP SLIP-ON WORK BOOT

CSA GRADE 1 STEEL TOE, STEEL PLATE. ESR.

STYLE: 5ANBDK8-6108A

SIZES: 7-11,12,13,14

- Full grain leather upper.
- DURATOE TPU toe cap.
- DRI-TEC lining.
- Removable polyurethane footbed.
- Poured polyurethane welt midsole.
- TARANTULA ANTI-SLIP rubber outsole.



DAKOTA

6 INCH BOOTS

"6002" STSP LEATHER WORK BOOT

CSA GRADE 1 STEEL TOE, STEEL PLATE. ESR.

STYLE: 5ANBDK8-6002

SIZES: 7-11,12,13,14,15

- Full grain leather upper.
- DURATOE TPU toe cap.
- Breathable lining with 200g T-MAX insulation.
- Removable polyurethane footbed.
- Injected polyurethane midsole.
- TARANTULA ANTI-SLIP rubber outsole.



DAKOTA

6 INCH BOOTS

"6114" QUAD COMFORT STCP WORK BOOT

CSA GRADE 1 STEEL TOE, COMPOSITE PLATE. ESR.

STYLE: 5ANBDK9-6114

SIZES: 7-11,12,13,14,15,16,17

- Full grain leather upper.
- Lining with FRESHTECH treatment.
- Multiple density removable polyurethane footbed.
- 200g T-MAX insulation.
- Flexible poured polyurethane welt midsole.
- TARANTULA ANTI-SLIP rubber outsole.



DAKOTA

6 INCH BOOTS

"6557" WATERPROOF STCP WORK BOOT

CSA GRADE 1 STEEL TOE, COMPOSITE PLATE. ESR.

STYLE: 5ANBDK0-6557

SIZES: 7-11,12,13,14,15

- Waterproof full grain leather upper.
- TPU DURATOE guard.
- Textile lining with FRESHTECH.
- Removable polyurethane footbed.
- 200g T-MAX insulation.
- HYPER-DRI HD3 waterproof, breathable membrane.
- Poured polyurethane midsole.
- VIBRAM® Fire & Ice™ rubber outsole.



DAKOTA

6 INCH BOOTS

"6512" METAL FREE CTCP WORK BOOT

CSA GRADE 1 COMPOSITE TOE, COMPOSITE PLATE. ESR.

STYLE: 5ANBDK9-6512

SIZES: 7-11,12,13,14

Our Dakota men's six-inch work boots feature composite toes and plates and they're resistant to electric shock and puncture. For added boot protection, they have exterior toe caps, built to withstand hard wearing conditions and extending the life of the toe box. FRESHTECH in the linings of these boots inhibits the growth of odour and stain-causing bacteria. The boots are finished with TARANTULA ANTI-SLIP outsoles that provide the ultimate in slip protection by reducing the likelihood that you'll slip or fall on wet and/or greasy surfaces.*

*Tarrantula Anti-Slip footwear has been tested for wet and dry conditions. They have not been tested for use on any type of ice. In order to qualify, they must meet or exceed our slip resistance standards.



DAKOTA

6 INCH BOOTS

"6516" WATERPROOF CTCP WORK BOOT

CSA GRADE 1 COMPOSITE TOE, COMPOSITE PLATE. ESR.

STYLE: 5ANBDK9-6516

SIZES: 7-11,12,13,14

- 200g T-MAX insulation.
- HYPER-DRI HD3 waterproof, breathable membrane.
- TPU DURATOE guard.
- DRI-TEC lining with FRESHTECH.
- Waterproof leather upper.
- Removable ETPU footbed.
- TARANTULA ANTI-SLIP rubber outsole.



HH

workwear

6 INCH BOOTS

ULTRA LIGHT ATCP WORK BOOT

CSA GRADE 1 ALUMINUM TOE, COMPOSITE PLATE. ESR.

STYLE: HHS173001

SIZES: 7-11,12,13,14

- High abrasion nylon upper.
- TPU toe cap.
- Breathable, moisture-wicking DRI-TEC lining.
- Removable open cell EVA footbed.
- Lightweight EVA midsole.
- Rubber outsole.



EXCLUSIVELY AT
Mark's





6 INCH BOOTS

CTCP WORK BOOT

CSA GRADE 1 COMPOSITE TOE, COMPOSITE PLATE. ESR.

STYLE: HHS202026

SIZES: 7-11,12,13,14

- Full grain leather upper.
- TPU toe cap.
- HELLY TECH Performance waterproof membrane.
- Removable polyurethane footbed.
- Injected polyurethane midsole.
- Oil, acid and slip-resistant rubber outsole.

EXCLUSIVELY AT
Mark's



6 INCH BOOTS

CTCP LEATHER WORK BOOT

CSA GRADE 1 COMPOSITE TOE, COMPOSITE PLATE. ESR.

STYLE: HHS212042

SIZES: 7-11,12,13,14

- Waterproof leather upper.
- HELLY TECH waterproof membrane.
- DRI-TEC lining with FRESHTECH
- 200g T-MAX insulation.
- Desma injected polyurethane midsole.
- HELLY GRIP rubber outsole.

EXCLUSIVELY AT
Mark's



6 INCH BOOTS



EXTRALIGHT CTCP WORK BOOT

CSA GRADE 1 COMPOSITE TOE, COMPOSITE PLATE. ESR.

STYLE: HHS202027

SIZES: 7-11,12,13,14

From Helly Hansen, these Extralight men's work boots have buffalo leather uppers protected with TPU toe caps. For workplace safety the boots feature composite toes and plates. All-day comfort is ensured with breathable linings and Ortholite® insoles that are removable if required. Extralight midsoles support the feet while slip-resistant rubber outsoles with a deep lug pattern help you keep your footing on slick and uneven surfaces.





6 INCH BOOTS

CTCP WORK BOOT

CSA GRADE 1 COMPOSITE TOE, COMPOSITE PLATE. ESR.

STYLE: HHS193002

SIZES: 7-11,12,13,14



- Full grain leather upper.
- HELLY TECH Performance waterproof membrane.
- Air Frame lining with 200g T-MAX insulation.
- Removable polyurethane sponge footbed.
- Lightweight EVA midsole.
- Rubber outsole.



6 INCH BOOTS

"CONTROL" WATERPROOF CTCP WORK BOOT

CSA GRADE 1 COMPOSITE TOE, COMPOSITE PLATE. ESR.

STYLE: P720204

SIZES: 7-11,12,13



- Waterproof, full grain leather upper.
- 200g Thinsulate® insulation.
- Removable EVA footbed.
- Welt midsole.
- Slip-resistant rubber outsole.



6 INCH BOOTS

"EXCAVATOR SUPERLITE" CTCP WATERPROOF BOOT

CSA GRADE 1 COMPOSITE TOE, COMPOSITE PLATE. ESR.

STYLE: P724582

SIZES: 7-11,12,13



- Nubuck leather upper.
- Breathable nylon mesh lining with 200g Thinsulate® insulation.
- Durable TPU toe guard.
- Cushioning polyurethane midsole.
- Extreme slip-resistant rubber outsole.



6 INCH BOOTS

"HAULER" WATERPROOF CTCP WORK BOOT

CSA GRADE 1 COMPOSITE TOE, COMPOSITE PLATE. ESR.

STYLE: P717627

SIZES: 7-11,12,13



- Full grain waterproof leather upper.
- Breathable nylon mesh lining with 200g Thinsulate® insulation.
- Removable Nylex and polyurethane foam footbed.
- TPU toecap.
- Slip and abrasion resistant deep-cleated rubber outsole.



WOLVERINE®

6 INCH BOOTS

"YUKON DURASHOCKS" CTCP WORK BOOT

CSA GRADE 1 COMPOSITE TOE, COMPOSITE PLATE. ESR.

STYLE: W197106

SIZES: 7-12,13

The Yukon work boot from Wolverine is designed for maximum durability and performance. DuraShocks® technology insoles deliver comfort while you work and the chiseled-edge rubber lug outsole provides superior grip in varied conditions. Featuring Wolverine's all new freedom toe, a large toe box offers more room and comfort. The Yukon is crafted in full grain leather, treated to be waterproof and breathable.



WOLVERINE®

6 INCH BOOTS

"HELLCAT" WATERPROOF CTCP WORK BOOT

CSA GRADE 1 COMPOSITE TOE, COMPOSITE PLATE. ESR.

STYLE: W207133

SIZES: 7-12,13

- Premium waterproof full grain leather upper.
- Breathable, waterproof membrane with moisture wicking mesh.
- Removable Ortholite® UltraLite footbed.
- UltraSpring™ high rebound ETPU midsole.
- Rubber outsole.



TERRA®

6 INCH BOOTS

"MURPHY" SLIP-ON CTCP WORK BOOT

CSA GRADE 1 COMPOSITE TOE, COMPOSITE PLATE. ESR.

STYLE: TR0A4NRFBLK

SIZES: 7-11,12,13,14

- Full grain leather upper with elastic gore panels.
- Moisture wicking and abrasion resistant lining.
- Removable polyurethane footbed.
- CLEANFeet® odor management technology.
- Direct injected PU midsole.
- Direct injected TPU outsole.





6 INCH BOOTS

"ENDURANCE HD" CTCP WATERPROOF BOOT

CSA GRADE 1 COMPOSITE TOE, COMPOSITE PLATE. ESR.

STYLE: TB0A1Q6R001

SIZES: 7-11,12,13,14,15

EXCLUSIVELY AT
Mark's

- Premium full grain waterproof leather upper.
- Breathable mesh lining with antimicrobial treatment.
- Waterproof membrane.
- Removable anti-fatigue technology footbed.
- Polyurethane midsole.
- All-weather TPU outsole.



6 INCH BOOTS

"BOONDOCK" CTCP WATERPROOF BOOT

CSA GRADE 1 COMPOSITE TOE, COMPOSITE PLATE. ESR.

STYLE: 91631

SIZES: 7-11,12,13,14,15

- Premium waterproof leather upper.
- Timberland PRO® rubber toe cap.
- Breathable Cambrelle® lining with waterproof lining.
- Removable anti-fatigue PU footbed.
- Polyurethane midsole.
- Timberland PRO® all-weather TPU outsole.



6 INCH BOOTS

"SAN JOSE" ATCP WORK BOOT

CSA GRADE 1 ALUMINUM TOE, COMPOSITE PLATE. ESR.

STYLE: 1021336

SIZES: 7-12,13,14,15

- Waterproof leather upper.
- Unlined.
- Removable metatomical polyurethane footbed.
- Polyurethane midsole.
- Oil and slip-resistant non-marking rubber outsole.



6 INCH BOOTS

LEATHER RUGGED FLEX CTCP WORK BOOT

CSA GRADE 1 COMPOSITE TOE, COMPOSITE PLATE. ESR.

STYLE: CMR6971

SIZES: 8-12,13,14,15

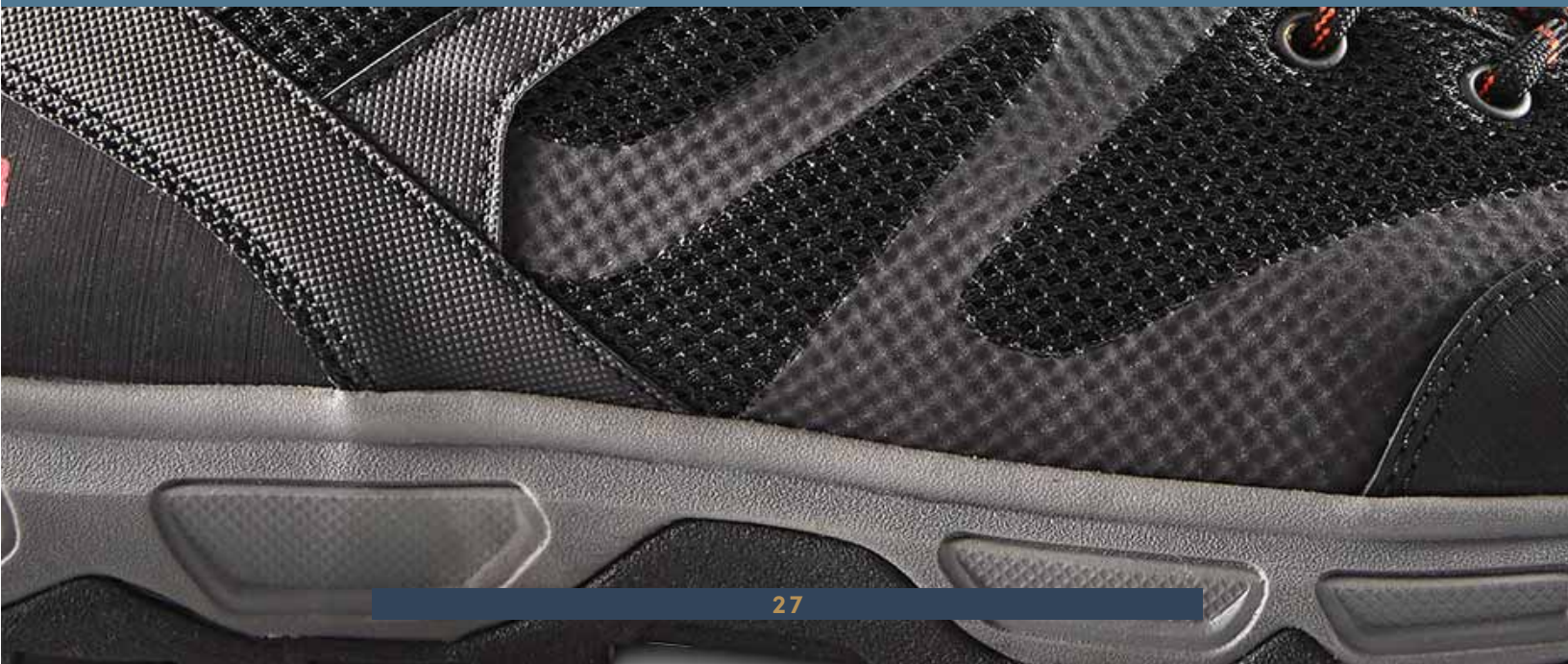
- Full grain leather upper.
- Abrasion resistant rubber toe and heel bumpers.
- Polyurethane/Ortholite® footbed.
- Storm Defender® waterproof, breathable technology.
- Carhartt® rugged flex rubber outsole.





M E N ' S

HIKERS



AGGRESSOR

HIKERS

LOW-CUT STSP HIKERS

CSA GRADE 1 STEEL TOE, STEEL PLATE. ESR.

STYLE: 5ANCAG9-2000

SIZES: 7-11,12,13,14

- Polyurethane mesh upper.
- Mesh lining.
- Removable polyurethane footbed.
- EVA midsole.
- Rubber outsole.



AGGRESSOR

HIKERS

MID-CUT STSP HIKERS

CSA GRADE 1 STEEL TOE, STEEL PLATE. ESR.

STYLE: 5ANCAG9-2300

SIZES: 7-11,12,13,14

- Polyurethane mesh upper.
- Mesh lining.
- Removable polyurethane footbed.
- EVA midsole.
- Rubber outsole.



DAKOTA

HIKERS

QUAD COMFORT ATCP LOW-CUT HIKERS

CSA GRADE 1 ALUMINUM TOE, COMPOSITE PLATE. ESR.

STYLE: 5ANCDK0-2302

SIZES: 7-11,12,13,14

An athletic look for on-the-job safety, these Dakota work shoes provide all-day comfort with cushioned midsoles and are ideal for use landscaping. These low-cut safety shoes meet CSA Grade 1 standards with aluminum toes and puncture-resistant composite plates. They're also electric shock resistant. The mesh linings are treated with FRESHTECH® to inhibit the growth of fungi, mold and mildew, in addition to odour-causing bacteria.



DAKOTA

HIKERS

MID-CUT APPROACH STSP HIKERS

CSA GRADE 1 STEEL TOE, STEEL PLATE. ESR.

STYLE: 26039MDQC-AS

SIZES: 7-11,12,13,14

These Quad Comfort
Anti-Slip mid cut
approach work boots
are ideal for warehouse areas,
distribution work,
light manufacturing,
drivers and trades.



DAKOTA

HIKERS

QUAD COMFORT ATCP MID-CUT HIKERS

CSA GRADE 1 ALUMINUM TOE, COMPOSITE PLATE. ESR.

STYLE: 5ANCDK0-2301

SIZES: 7-11,12,13,14

- Waterproof Buffalo leather upper.
- Rubber heel and toe protection.
- Breathable mesh lining.
- HYPER-DRI HD3 waterproof, breathable membrane.
- Removable footbed.
- Cushioning EVA midsole.
- TARANTULA ANTI-SLIP rubber outsole.



DAKOTA

HIKERS

WATERPROOF MID-CUT STSP HIKERS

CSA GRADE 1 STEEL TOE, STEEL PLATE. ESR.

STYLE: 5ANCDK8-2127

SIZES: 7-11,12,13,14

- Synthetic and mesh upper.
- Breathable lining with HYPER-DRI HD3 waterproof, breathable membrane.
- Compression molded EVA midsole.
- Extra EVA heel pod to give added comfort.
- TARANTULA ANTI-SLIP rubber outsole.



DAKOTA

HIKERS

MID-CUT ATCP HIKERS

CSA GRADE 1 ALUMINUM TOE, COMPOSITE PLATE. ESR.

STYLE: 5ANCDK7-2124

SIZES: 7-11,12,13

- Suede and mesh upper.
- EVA midsole with heel and forefoot pods for additional comfort.
- Rubber toe guard.
- Removable EVA footbed.
- TARANTULA ANTI-SLIP rubber outsole.



DAKOTA

HIKERS

HD3 LEATHER STCP HIKERS

CSA GRADE 1 STEEL TOE, COMPOSITE PLATE. ESR.

STYLE: 5ANCDK5-2120

SIZES: 7-11,12,13,14

- Waterproof leather upper.
- Rugged TPU abrasion resistant toe & heel guard.
- Breathable, moisture wicking DRI-TEC lining.
- HYPER-DRI HD3 waterproof, breathable membrane.
- Removable EVA footbed.
- Cushioning EVA midsole.
- TARANTULA ANTI-SLIP rubber outsole.



HH
workwear

HIKERS

LOW-CUT ATCP HIKERS

CSA GRADE 1 ALUMINUM TOE, COMPOSITE PLATE. ESR.

STYLE: HHF171006

SIZES: 7-11,12,13,14

Sporting a hiking shoe design, these low-cut Helly Hansen safety boots have aluminum toes and composite plates. They are built with breathable mesh linings, removable Ortholite® insoles and supportive compression-moulded EVA midsoles. Tough rubber outsoles complete the design.



EXCLUSIVELY AT
Mark's



HIKERS

MID-CUT ATCP HIKERS

CSA GRADE 1 ALUMINUM TOE, COMPOSITE PLATE. ESR.

STYLE: HHF171007

SIZES: 7-11,12,13,14

Sporting a hiking boot design, these mid-cut Helly Hansen safety boots have aluminum toes and composite plates.

They are built with breathable mesh linings, removable Ortholite® insoles and supportive compression-moulded EVA midsoles.

Tough rubber outsoles complete the design.

EXCLUSIVELY AT
Mark's



HIKERS

"SAFEVENT" CTCP LOW-CUT HIKERS

CSA GRADE 1 COMPOSITE TOE, COMPOSITE PLATE. ESR.

STYLE: HHS191009

SIZES: 7-11,12,13,14,15

- Breathable woven upper with welded TPU overlays for protection.
- TPU toe bumper.
- Removable Ortholite® footbed.
- Compression molded EVA midsole with SafeVent air flow technology.
- Rubber outsole.

EXCLUSIVELY AT
Mark's



HIKERS

"SAFEVENT" CTCP MID-CUT HIKERS

CSA GRADE 1 COMPOSITE TOE, COMPOSITE PLATE. ESR.

STYLE: HHS191008

SIZES: 7-11,12,13,14,15

- Breathable knit upper with welded TPU overlays for protection.
- TPU toe bumper.
- Removable Ortholite® footbed.
- Compression molded EVA midsole with SafeVent air flow technology.
- Rubber outsole.

EXCLUSIVELY AT
Mark's





HIKERS

A hiker-style safety boot from Helly Hansen Workwear, this design includes a unique waterproof membrane. It keeps water molecules out, while allowing sweat vapour to pass through. You stay dry from the outside and comfortable on the inside. Speaking of comfort, these work boots feature Ortholite® insoles as well as molded EVA midsoles for good support. They meet CSA Grade 1 requirements with aluminum toes and puncture-resistant composite plates. The boots are also resistant to electric shock.

EXCLUSIVELY AT
Mark's

WATERPROOF ATCP HIKERS

CSA GRADE 1 ALUMINUM TOE, COMPOSITE PLATE. ESR.

STYLE: HHS191010

SIZES: 7-11,12,13,14



HIKERS

"TRAIL" LOW-CUT CTCP HIKERS

CSA GRADE 1 COMPOSITE TOE, COMPOSITE PLATE. ESR.

STYLE: 302120

SIZES: 7-11,12,13,14

- Waterproof leather upper.
- Rubber toe and heel guard.
- Breathable nylon mesh lining with waterproof membrane.
- Removable EVA footbed with heel shock absorber.
- Cushioning EVA midsole.
- Kodiak Ultimate slip and oil resistant rubber outsole.



HIKERS

"MKT1 QUAD CAPSULE" CTCP WATERPROOF HIKERS

CSA GRADE 1 COMPOSITE TOE, COMPOSITE PLATE. ESR.

STYLE: KD0A4NL2A35

SIZES: 7-11,12,13,14,15

- Leather and nylon upper.
- Breathable lining with waterproof membrane.
- Removable Ortholite® footbed.
- Kodiak® Quad Capsule™ comfort system.
- Wrap around, oil and slip-resistant TPU outsole.

METAL FREE





HIKERS

"JOURNEY" WATERPROOF CTCP HIKERS

CSA GRADE 1 COMPOSITE TOE, COMPOSITE PLATE. ESR.

STYLE: 302123

SIZES: 7-11,12,13,14

- Waterproof leather upper.
- TPU heel guard.
- Rubber toe guard.
- Breathable Nylon mesh lining with 200g Thinsulate™ insulation.
- Waterproof membrane.
- Removable EVA footbed.
- EVA midsole.
- Rubber outsole.



HIKERS

"OUTLINE" STSP LEATHER HIKERS

CSA GRADE 1 STEEL TOE, STEEL PLATE. ESR.

STYLE: P720996

SIZES: 7-11,12,13

- Full grain leather upper.
- Breathable nylon mesh lining.
- Removable molded EVA footbed.
- Rubber midsole.
- Rubber outsole.



HIKERS

"RIDGEWORKS" CTCP WATERPROOF HIKERS

CSA GRADE 1 COMPOSITE TOE, COMPOSITE PLATE. ESR.

STYLE: TB0A1OP6001

SIZES: 7-11,12,13,14,15

These Pro Ridgework safety boots from Timberland offer plenty of useful features for the workplace.

The Ever-Guard™ waterproof leather resists abrasion and improves durability in rugged worksite conditions.

The boots include breathable mesh linings and removable anti-fatigue insoles to keep your feet feeling dry and comfortable.

For safety, the boots feature CSA Grade 1 composite toes and plates.

Ever-Guard™ waterproof leather upper.

Breathable mesh lining.

Timberland® PRO rubber outsole.

Waterproof membrane

Removable anti-fatigue technology footbed.

Dual density EVA midsole.



EXCLUSIVELY AT
Mark's



HIKERS

"HAMILTON" WATERPROOF CTCP HIKERS

CSA GRADE 1 COMPOSITE TOE, COMPOSITE PLATE. ESR.

STYLE: 1020096

SIZES: 7-11,12,13,14,15

- Waterproof leather upper.
- TPU heel guard.
- Rubber toe guard.
- Breathable Nylon mesh lining with 200g Thinsulate™ insulation.
- Waterproof membrane.
- Removable EVA footbed.
- EVA midsole.
- Rubber outsole.



HIKERS

"OSHAWA MID" CTCP WATERPROOF HIKERS

CSA GRADE 1 COMPOSITE TOE, COMPOSITE PLATE. ESR.

STYLE: 1020100

SIZES: 7-12,13,14,15,16,17

- Waterproof leather upper.
- Moisture wicking textile lining.
- KEEN.DRY waterproof, breathable membrane.
- Removable polyurethane footbed.
- Dual density compression molded EVA and polyurethane midsole.
- Oil and slip-resistant, non-marking rubber outsole.



HIKERS

"WINDOC" METAL FREE STSP LOW-CUT HIKERS

CSA GRADE 1 STEEL TOE, STEEL PLATE. ESR.

STYLE: J17865

SIZES: 7-12,13,14,15

From Merrell, these Windoc hiker-style work shoes offer multiple safety and comfort features to protect your feet on the job. For comfort, they are breathable with sound arch support technology and underfoot cushioning. For safety, the shoes are equipped with steel toes and plates and they're resistant to electric shock and puncture. They also offer protection for brief periods of direct contact with extreme heat. Oil and slip resistant, these work shoes feature Merrell M Select™ Grip rubber outsoles that provide improved traction and grip wherever you need it.





HIKERS

"WINDOC" WATERPROOF STSP MID-CUT HIKERS

CSA GRADE 1 STEEL TOE, STEEL PLATE. ESR.

STYLE: J17863

SIZES: 7-12,13,14,15

From Merrell, these Windoc hiker-style work shoes offer multiple safety and comfort features to protect your feet on the job. For comfort, they are breathable with sound arch support technology and underfoot cushioning. For safety, the shoes are equipped with steel toes and plates and they're resistant to electric shock and puncture. They also offer protection for brief periods of direct contact with extreme heat. Oil and slip resistant, these work shoes feature Merrell M Select™ Grip rubber outsoles that provide improved traction and grip wherever you need it.



HIKERS

"MOAB VERTEX" CTCP MID-CUT HIKERS

CSA GRADE 1 COMPOSITE TOE, COMPOSITE PLATE. ESR.

STYLE: J19483W

SIZES: 7-12,13,14

- Waterproof full grain leather and breathable mesh upper.
- Breathable mesh lining.
- Merrell M Select™ DRY waterproof membrane.
- COMFORTBASE™ contoured footbed.
- Protective and abrasion resistant rubber toe cap.
- Oil and slip-resistant outsole.



HIKERS

"STRONGFIELD" CTCP WATERPROOF HIKERS

CSA GRADE 1 COMPOSITE TOE, COMPOSITE PLATE. ESR.

STYLE: J099383

SIZES: 7-12,13,14,15

EXCLUSIVELY AT
Mark's

- Leather and mesh upper.
- Breathable mesh lining.
- Merrell M Select™ DRY waterproof membrane.
- COMFORTBASE™ contoured footbed.
- ToughFrame midsole technology acts as an ecoskeleton for added protection.
- Oil, slip and heat resistant outsole.





TARANTULA

M E N ' S

CASUAL

DAKOTA

CASUAL

STSP SKATE SHOES

CSA GRADE 1 STEEL TOE, STEEL PLATE. ESR.

STYLE: 5ANDDK5-3613

SIZES: 7-11,12,13,14

Safety and casual style come together in these low-cut Dakota skate shoes with steel toes and plates. Removable insoles provide plenty of cushioning to help reduce aches and pains after long days on your feet, while mesh linings wick away moisture to keep the insides fresh and dry.



DAKOTA

CASUAL

STSP ATHLETIC SHOES

CSA GRADE 1 STEEL TOE, STEEL PLATE. ESR.

STYLE: 5ANDDK9-3621

SIZES: 7-11,12,13,14

- Nylon upper with TPU overlay.
- Breathable mesh lining with FRESHTECH.
- Removable polyurethane footbed.
- Lightweight EVA midsole.
- TARANTULA ANTI-SLIP rubber outsole.



DAKOTA

CASUAL

"3603" QUAD-LITE ATSP ATHLETIC SHOES

CSA GRADE 1 ALUMINUM TOE, STEEL PLATE. ESR.

STYLE: 5ANDDK8-3603

SIZES: 7-11,12,13,14

- Mesh upper with welded TPU.
- Breathable mesh lining with FRESHTECH.
- Removable EVA footbed.
- Injected EVA midsole.
- TARANTULA ANTI-SLIP rubber outsole.



DAKOTA

CASUAL

"3604" QUAD-LITE ATSP ATHLETIC SHOES

CSA GRADE 1 ALUMINUM TOE, STEEL PLATE. ESR.

STYLE: 5ANDDK8-3604

SIZES: 7-11,12,13,14

- Mesh upper with welded TPU.
- Breathable mesh lining with FRESHTECH.
- Removable EVA footbed.
- Injected EVA midsole.
- TARANTULA ANTI-SLIP rubber outsole.



DAKOTA

CASUAL

MID-CUT QUAD-LITE STSP ATHLETIC SHOES

CSA GRADE 1 STEEL TOE, STEEL PLATE. ESR.

STYLE: 5ANDDK6-3617

SIZES: 7-11,12,13,14

- High abrasion synthetic upper.
- Rubber toe and heel guard.
- Breathable lining.
- Removable EVA footbed.
- Cushioning EVA midsole.
- TARANTULA ANTI-SLIP rubber outsole.



DAKOTA

CASUAL

LIGHTWEIGHT LOW-CUT CTCP SKATE SHOES

CSA GRADE 1 COMPOSITE TOE, COMPOSITE PLATE. ESR.

STYLE: 5ANDDK0-3821

SIZES: 7-11,12,13,14

A sporty look for on-the-job safety, these Dakota work shoes offer athletic styling and all-day comfort.

These safety shoes meet CSA Grade 1 standards with composite toes and puncture-resistant composite plates. They're also electric shock resistant.

The mesh linings are treated with FRESHTECH® to inhibit the growth of fungi, mold and mildew, in addition to odour-causing bacteria.



DAKOTA

CASUAL

LIGHTWEIGHT MID-CUT CTCP ATHLETIC SHOES

CSA GRADE 1 COMPOSITE TOE, COMPOSITE PLATE. ESR.

STYLE: 5ANDDK0-3822

SIZES: 7-11,12,13,14

- Mesh upper.
- Compression molded EVA midsole.
- Breathable mesh lining with FRESHTECH.
- Removable polyurethane footbed.
- TARANTULA ANTI-SLIP rubber outsole.



DAKOTA

CASUAL

TRADITIONAL ATCP OXFORDS

CSA GRADE 1 ALUMINUM TOE, COMPOSITE PLATE. ESR.

STYLE: 5ANDDK0-1117QC

SIZES: 7-11,12,13,14,15,16,17

- Full grain leather upper.
- Polyester lining.
- Removable polyurethane footbed.
- Poured polyurethane welt midsole.
- Durable soft polyurethane midsole.



DAKOTA

CASUAL

SLIP-ON STSP STREET SPORT SHOES

CSA GRADE 1 STEEL TOE, STEEL PLATE. ESR.

STYLE: 5ANDDK0-3819

SIZES: 7-11,12,13,14

- Breathable mesh lining with FRESHTECH.
- Microfibre upper.
- Cushioning EVA midsole.
- Removable PU foam footbed.
- TARANTULA ANTI-SLIP rubber outsole.



DAKOTA

CASUAL

TRADITIONAL ATCP OXFORDS

CSA GRADE 1 ALUMINUM TOE, COMPOSITE PLATE. ESR.

STYLE: 5ANDDK0-1119QC

SIZES: 7-11,12,13,14,15,16,17

- Full grain leather upper.
- Polyester lining.
- Removable polyurethane footbed.
- Poured polyurethane welt midsole.
- Durable soft polyurethane midsole.



DAKOTA

CASUAL

LACE-UP STSP STREET SPORT SHOES

CSA GRADE 1 STEEL TOE, STEEL PLATE. ESR.

STYLE: 5ANDDK0-3820

SIZES: 7-11,12,13,14

- Microfibre upper.
- Breathable mesh lining with FRESHTECH.
- Removable polyurethane foam footbed.
- Cushioning EVA midsole.
- TARANTULA ANTI-SLIP rubber outsole.



HH
workwear

CASUAL

ATSP WELDED ATHLETIC SHOES

CSA GRADE 1 ALUMINUM TOE, STEEL PLATE. ESR.

STYLE: HHS194002

SIZES: 7-11,12,13,14,15

- High-abrasion mesh upper with welded polyurethane overlays for protection.
- Durable rubber toe guard.
- Removable Ortholite® footbed.
- C Zone compression molded EVA midsole.
- Rubber outsole.

EXCLUSIVELY AT
Mark's



HH
workwear

CASUAL

ATSP KNIT ATHLETIC SHOES

CSA GRADE 1 ALUMINUM TOE, STEEL PLATE. ESR.

STYLE: HHS194003

SIZES: 7-11,12,13,14,15

- Knit upper with welded TPU overlays for protection.
- Durable TPU toe guard.
- Removable Ortholite® footbed.
- C Zone compression molded EVA midsole.
- Rubber outsole.

EXCLUSIVELY AT
Mark's



HH
workwear

CASUAL

CTSP EXTRALIGHT ATHLETIC SHOES

CSA GRADE 1 COMPOSITE TOE, STEEL PLATE. ESR.

STYLE: HHF204040

SIZES: 7-11,12,13,14

- Lightweight breathable mesh upper with TPU welded reinforcements.
- Breathable Air Mesh lining.
- Removable footbed.
- Rubber outsole.

EXCLUSIVELY AT
Mark's



TERRA

CASUAL

"SPIDER X" CTCP SHOES

CSA GRADE 1 COMPOSITE TOE, COMPOSITE PLATE. ESR.

STYLE: 108008BLL

SIZES: 7,8-11,12,13

EXCLUSIVELY AT
Mark's

- Direct injected single density polyurethane midsole.
- Full grain leather and suede upper.
- Moisture wicking lining with CLEANFeet® odour control.
- Direct injected single density PU outsole.
- Removable PU footbed.



CAT

CASUAL

"SPRINT" TEXTILE ATCP ATHLETIC SHOES

CSA GRADE 1 ALUMINUM TOE, COMPOSITE PLATE. ESR.

STYLE: P724589

SIZES: 7-11,12,13

- Leather and mesh upper.
- Nylon mesh lining.
- Removable footbed.
- EVA midsole.
- Slip-resistant rubber outsole.



CAT

CASUAL

"SPRINT" ATCP ATHLETIC SHOES

CSA GRADE 1 ALUMINUM TOE, COMPOSITE PLATE. ESR.

STYLE: P724586

SIZES: 7-11,12,13

- Suede upper.
- Breathable mesh lining.
- Removable mesh and NXT footbed.
- EASE comfort midsole.
- Slip-resistant rubber outsole.



CAT

CASUAL

"STREAMLINE" CTCP LEATHER SHOES

CSA GRADE 1 ALUMINUM TOE, COMPOSITE PLATE. ESR.

STYLE: P721642

SIZES: 7-11,12,13

- Full grain leather upper.
- Molded heel counter.
- Nylon mesh lining.
- Dual density EVA midsole.
- Slip-resistant rubber outsole.





CASUAL

"POWERTRAIN SPORT" ATCP ATHLETIC SHOES

CSA GRADE 1 ALUMINUM TOE, COMPOSITE PLATE. ESR.

STYLE: TB0A1RV3001

SIZES: 7-11,12,13,14,15

EXCLUSIVELY AT
Mark's

- Ripstop nylon upper with abrasion resistant screen-print.
- TPU toe overlay for added durability and protection.
- Dual density polyurethane outsole.
- Breathable mesh lining with anti-microbial treatment.
- Single density polyurethane anti-fatigue footbed.



CASUAL

"REAXION LOW" CTCP ATHLETIC SHOES

CSA GRADE 1 COMPOSITE TOE, COMPOSITE PLATE. ESR.

STYLE: TB0A21SS001

SIZES: 7-11,12,13,14,15

EXCLUSIVELY AT
Mark's

- Leather and nylon upper.
- Mesh lining with anti-microbial treatment.
- Removable anti-fatigue PU footbed.
- TPU wrapped Aerocore™ midsole.
- All weather TPU outsole.
- METAL FREE



CASUAL

"POWERTRAIN SPORT" ATCP SHOES

CSA GRADE 1 ALUMINUM TOE, COMPOSITE PLATE. ESR.

STYLE: TB0A1GVQ001

SIZES: 7-11,12,13,14,15

- Ripstop nylon upper.
- Mesh lining with anti-microbial treatment.
- Dual density polyurethane midsole.
- Single density polyurethane anti-fatigue footbed.

EXCLUSIVELY AT
Mark's



CASUAL

"POWERTRAIN" MID-CUT ATCP ATHLETIC SHOES

CSA GRADE 1 ALUMINUM TOE, COMPOSITE PLATE. ESR.

STYLE: TB0A11ZU001

SIZES: 7-11,12,13,14,15

- Synthetic Microfibre textile upper.
- Mesh lining with anti-microbial treatment.
- Single density polyurethane anti-fatigue footbed.
- Dual density polyurethane outsole.





CASUAL

"REAXION MID" CTCP WATERPROOF SHOES

CSA GRADE 1 COMPOSITE TOE, COMPOSITE PLATE. ESR.

STYLE: TBOA21RU001

SIZES: 7-11,12,13,14,15

EXCLUSIVELY AT
Mark's

- Full grain leather upper.
- Mesh lining with anti-microbial treatment.
- Waterproof membrane.
- Removable anti-fatigue PU footbed.
- TPU wrapped Aerocore™ midsole.
- Luggy rubber outsole.
- METAL FREE



CASUAL

"FULL BENCH SUPERLITE" ATCP ATHLETIC SHOES

CSA GRADE 1 ALUMINUM TOE, COMPOSITE PLATE. ESR.

STYLE: J17541

SIZES: 7-12,13,14

- Mesh and synthetic upper.
- Breathable mesh lining.
- Removable footbed.
- EVA midsole.
- Oil and slip resistant rubber outsole
- METAL FREE



CASUAL

"VISTA ENERGY XT" CTCP SAFETY SHOES

CSA GRADE 1 COMPOSITE TOE, COMPOSITE PLATE. ESR.

STYLE: 1024610

SIZES: 7-12,13,14,15

- Welded synthetic upper.
- Breathable and moisture wicking mesh lining.
- Removable polyurethane footbed.
- KEEN ReGen® multi-density midsole.
- Rubber outsole.
- KNOOEFTFIT® heel-capture system.



ROYER

CASUAL

STCP ATHLETIC SHOES

CSA GRADE 1 STEEL TOE, COMPOSITE PLATE. ESR.

STYLE: 10-501

SIZES: 4,5-11,12,13,14

- Full grain leather upper.
- Mesh lining.
- Leather and EVA footbed.
- EVA midsole.
- Oil resistant rubber outsole.





TARANTULA®

M E N ' S

ANTI-SLIP



DAKOTA

ANTI-SLIP

NON-SAFETY SLIP-ON ANTI-SLIP SHOES

NON-SAFETY

STYLE: 5ANDDK0-3025

SIZES: 7-11,12,13,14

- Microfibre and polyurethane upper.
- Breathable mesh lining with FRESHTECH.
- Removable EVA footbed.
- Cushioning EVA midsole.
- TARANTULA ANTI-SLIP rubber outsole.



DAKOTA

ANTI-SLIP

NON-SAFETY LACE-UP ANTI-SLIP SHOES

NON-SAFETY

STYLE: 5ANDDK0-3026

SIZES: 7-11,12,13,14

- Microfibre and polyurethane upper.
- Breathable mesh lining with FRESHTECH.
- Removable EVA footbed.
- Cushioning EVA midsole.
- TARANTULA ANTI-SLIP rubber outsole.



DAKOTA

ANTI-SLIP

NON-SAFETY ANTI-SLIP SKATE SHOES

NON-SAFETY

STYLE: 5ANDDK0-3027

SIZES: 7-12,13,14,15

- Microfibre and polyurethane upper.
- Breathable mesh lining with FRESHTECH.
- Removable EVA footbed.
- Cushioning EVA midsole.
- TARANTULA ANTI-SLIP rubber outsole.



DAKOTA

ANTI-SLIP

ANTI-SLIP SLIP-ON STSP SHOES

CSA GRADE 1 STEEL TOE, STEEL PLATE. ESR.

STYLE: 5ANDDK0-3020

SIZES: 7-11,12,13,14

- Microfibre and polyurethane upper.
- Breathable mesh lining with FRESHTECH.
- Removable EVA footbed.
- Cushioning EVA midsole.
- TARANTULA ANTI-SLIP rubber outsole.



DAKOTA

ANTI-SLIP

STSP ANTI-SLIP LACE-UP OXFORDS

CSA GRADE 1 STEEL TOE, STEEL PLATE. ESR.

STYLE: 5ANDDK0-3023

SIZES: 7-11,12,13,14

- Microfibre and polyurethane upper.
- Breathable mesh lining with FRESHTECH.
- Removable EVA footbed.
- Cushioning EVA midsole.
- TARANTULA ANTI-SLIP rubber outsole.



DAKOTA

ANTI-SLIP

STSP ANTI-SLIP LACE-UP SHOES

CSA GRADE 1 STEEL TOE, STEEL PLATE. ESR.

STYLE: 5ANDDK0-3021

SIZES: 7-11,12,13,14

- Microfibre and polyurethane upper.
- Breathable mesh lining with FRESHTECH.
- Removable EVA footbed.
- Cushioning EVA midsole.
- TARANTULA ANTI-SLIP rubber outsole.



SKECHERS
WORK

ANTI-SLIP

ATSP ANTI-SLIP LACE-UP SHOES

CSA GRADE 1 ALUMINUM TOE, STEEL PLATE. ESR.

STYLE: 99999068

SIZES: 7-11,12,13,14

- Textile mesh upper with synthetic overlays.
- Soft mesh fabric lining.
- Cushioning EVA midsole.
- Removable air-cooled memory foam footbed.

EXCLUSIVELY AT
Mark's



SKECHERS
WORK

ANTI-SLIP

SLIP-ON STCP SHOES

CSA GRADE 1 STEEL TOE, COMPOSITE PLATE. ESR.

STYLE: 99999066

SIZES: 7-11,12,13,14

- Action leather and synthetic upper.
- Soft mesh fabric lining.
- Cushioning EVA midsole.
- Removable air-cooled memory foam footbed.
- Slip-resistant rubber outsole.

EXCLUSIVELY AT
Mark's



SKECHERS
WORK

ANTI-SLIP

STCP BROWN SAFETY SHOE

CSA GRADE 1 STEEL TOE, COMPOSITE PLATE. ESR.

STYLE: 99999110

SIZES: 7-11,12,13,14

- Leather and textile upper.
- Soft mesh fabric lining.
- Cushioning EVA midsole.
- Removable air-cooled memory foam footbed.
- Slip-resistant rubber outsole.

EXCLUSIVELY AT
Mark's



SKECHERS
WORK

ANTI-SLIP

STSP LACE-UP SKATE SHOES

CSA GRADE 1 STEEL TOE, STEEL PLATE. ESR.

STYLE: 99999070

SIZES: 7-11,12,13,14

- Action leather upper.
- Soft mesh fabric lining.
- Cushioning EVA midsole.
- Removable air-cooled memory foam footbed.
- Slip-resistant rubber outsole.

EXCLUSIVELY AT
Mark's



SKECHERS
WORK

ANTI-SLIP

STSP ANTI-SLIP SKATE SHOES

CSA GRADE 1 STEEL TOE, STEEL PLATE. ESR.

STYLE: 99999071

SIZES: 7-11,12,13,14

- Action leather and suede upper.
- Soft mesh fabric lining.
- Cushioning EVA midsole.
- Removable air-cooled memory foam footbed.
- Slip resistant rubber outsole.

EXCLUSIVELY AT
Mark's



SKECHERS
WORK

ANTI-SLIP

ATHLETIC ATSP SHOES

CSA GRADE 1 ALUMINUM TOE, STEEL PLATE. ESR.

STYLE: 77A77068

SIZES: 7-11,12,13,14

- Leather and synthetic upper.
- Soft mesh fabric lining.
- Shock absorbing EVA midsole.
- Removable air-cooled memory foam footbed.
- Slip-resistant rubber outsole.

EXCLUSIVELY AT
Mark's





TARANTULA®

M E N ' S

STATIC DISSIPATIVE

DAKOTA

STATIC DISSIPATIVE

ESD ALUMINUM TOE SLIP-ON LEATHER SHOES

CSA GRADE 1 ALUMINUM TOE. STATIC DISSIPATIVE.

STYLE: 5ANDDK9-3201

SIZES: 7-11,12,13,14,15

From Dakota, these leather safety shoes have aluminum toes and they're static dissipative. These shoes feature our FRESHTECH technology, a safe and invisible antimicrobial treatment that is applied to our footwear. It inhibits the growth of fungi, mold and mildew, in addition to odour-causing bacteria. Contoured EVA insoles and rubber outsoles provide underfoot support.



DAKOTA

STATIC DISSIPATIVE

ESD LACE-UP LEATHER SHOES

CSA GRADE 1 ALUMINUM TOE, STATIC DISSIPATIVE.

STYLE: 5ANDDK9-3200

SIZES: 7-11,12,13,14,15

- Leather upper.
- Breathable lining with FRESHTECH.
- Removable contoured footbed.
- Compression molded EVA midsole.
- Rubber outsole.



Timberland PRO

STATIC DISSIPATIVE

"POWERTRAIN SPORT SD+" ALUM. SAFETY TOE SHOES

CSA GRADE 1 ALUMINUM TOE, STATIC DISSIPATIVE.

STYLE: TB0A1VDY001

SIZES: 7-11,12,13,14,15

- Ripstop nylon upper with abrasion resistant screen print.
- Breathable mesh lining with anti-microbial treatment.
- Dual density polyurethane outsole.
- TPU toe overlay.
- Removable, single density polyurethane footbed.





M E N ' S

WET WEATHER

AGGRESSOR

WET WEATHER

NON-SAFETY INSULATED BOOTS

NON-SAFETY.

STYLE: 5ANEAG2-9600

SIZES: 4-15 Full Sizes Only



- 100% waterproof, molded TPO upper.
- Nylon cuff with drawstring keeps moisture out.
- Long wearing, self-cleaning outsole.
- Wool blend liner is tested to a true comfort rating of -20 to -30 degrees Celcius.

LINER AVAILABLE
SIZE: 4-15 Full Sizes Only
STYLE: 5ANFAG3-01LNR

AGGRESSOR

WET WEATHER

STSP INSULATED WET WEATHER BOOTS

CSA GRADE 1 STEEL TOE, STEEL PLATE. ESR.

STYLE: 5ANEAG2-9500

SIZES: 4-15 Full Sizes Only



- 100% waterproof, molded TPO upper.
- Nylon cuff with drawstring keeps moisture out.
- Wool blend liner is tested to a true comfort rating of -20 to -30 degrees Celcius.
- Long wearing, self-cleaning outsole.

LINER AVAILABLE
SIZE: 4-15 Full Sizes Only
STYLE: 5ANFAG3-01LNR



DAKOTA

WET WEATHER

NST SYNTROL PREMIUM INJECTED BOOTS

NON-SAFETY.

STYLE: 5ANEDK5-9860

SIZES: 7-14 Full Sizes Only



- TPR upper.
- Unlined.
- Premium poured polyurethane footbed.
- TPR midsole.
- TPR outsole.

DAKOTA

WET WEATHER

STSP SYNTROL PREMIUM INJECTED BOOTS

CSA GRADE 1 STEEL TOE, STEEL PLATE. ESR.

STYLE: 5ANEDK5-9850

SIZES: 7-14 Full Sizes Only



- TPR upper.
- Unlined.
- Poured polyurethane footbed.
- TPR midsole.
- TPR outsole.





WET WEATHER

"FJORD" CTCP INSULATED BOOTS

CSA GRADE 1 COMPOSITE TOE, COMPOSITE PLATE. ESR.

STYLE: HHF146114

SIZES: 7-14 Full Sizes Only



- TPO upper.
- Nylon lining.
- Removable foam/polyester insulated liner.
- TPO outsole.
- Tested to a true temperature rating of -50 to -60 degrees Celcius.



WET WEATHER

"FJORD" NST INSULATED BOOTS

NON-SAFETY.

STYLE: HHF146115

SIZES: 7-13 Full Sizes Only



- TPO upper.
- Nylon lining.
- Removable foam/polyester liner.
- TPO outsole.
- Tested to a true temperature rating of -50 to -60 degrees Celsius.

Featuring a fully-sealed shell, these Helly Hansen Workwear boots are ideal for outdoor and indoor wet environments.

They have heavily lugged rubber outsoles for improved traction. These boots meet CSA Grade 1 requirements for toe protection and resistance to puncture and electric shock.

EXCLUSIVELY AT
Mark's



WET WEATHER

STSP POLYURETHANE BOOTS

CSA GRADE 1 STEEL TOE, STEEL PLATE. ESR.

STYLE: HHF196120

SIZES: 7-14 Full Sizes Only



Long wearing polyurethane upper.

Polyurethane upper for added comfort.

Tested to a true temperature rating of -20 to -30 degrees Celcius.

H/H Workwear rubber outsole provides high-traction in wet environments.



CHINOOK

WET WEATHER

NON-SAFETY PVC BOOTS

NON-SAFETY.

STYLE: 5ANECH9-7501

SIZES: 7-14 Full Sizes Only



- PVC upper.
- Unlined.
- Removable EVA footbed.
- PVC midsole.
- PVC outsole.

BAFFIN
POLAR PROVEN

WET WEATHER

"BLACKHAWK" NON-SAFETY BOOTS

NON-SAFETY.

STYLE: LICO-M001

SIZES: 7-14 Full Sizes Only



- Lightweight, TPR compound upper.
- Unlined.
- Removable comfort footbed.
- Self-cleaning TPR outsole.

BAFFIN
POLAR PROVEN

WET WEATHER

"BLACKHAWK" STSP BOOTS

CSA GRADE 1 STEEL TOE, STEEL PLATE. ESR.

STYLE: LICO-MP01

SIZES: 7-15 Full Sizes Only



- Lightweight TPR compound upper.
- Unlined.
- Removable comfort footbed.
- Self-cleaning outsole TPR outsole.



BAFFIN
POLAR PROVEN

WET WEATHER

STSP FELT LINED BOOTS

CSA GRADE 1 STEEL TOE, STEEL PLATE. ESR.

STYLE: 8564

SIZES: 6-14 Full Sizes Only



- One piece TR upper.
- Wool blend liner.
- Long wearing self-cleaning outsole.





WET WEATHER

"MAXIMUM" STSP OARPRENE BOOTS

CSA GRADE 1 STEEL TOE, STEEL PLATE. ESR.

STYLE: 9699

SIZES: 7-14 Full Sizes Only

Equipped with a steel toe and plate, these wide fitting rubber boots perform well in areas where moisture exists, such as those in the oil and chemical industries. The seamless construction prevents seepage, while the self-cleaning outsole grips slippery areas safely. For added comfort, these boots have removable insoles and Gelflex anti-fatigue midsoles.

Molded seamless Oarprene upper.

Generous wider fit.

Gelflex fatigue resistant midsole.

Slip-resistant self-cleaning outsole.

Comfort crafted footbed.



WET WEATHER

PUROFORT+ "EXPANDER" STSP BOOTS

CSA GRADE 1 STEEL TOE, STEEL PLATE. ESR.

STYLE: EC02A33

SIZES: 6-16 Full Sizes Only

- Polyurethane upper.
- Red Dunlop branded polyurethane lining.
- Polyurethane midsole.
- Vibram® rubber outsole.



WET WEATHER

"SNUGBOOT" WORK PRO CTCP SD BOOTS

CSA GRADE 1 COMPOSITE TOE, COMPOSITE PLATE. ESR.

STYLE: NE68A93

SIZES: 5-14 Full Sizes Only

- Purotex breathable, waterproof upper.
- Polyurethane shell.
- Energy absorption in heel.
- Slip-resistant cleated rubber outsole.
- Static dissipative.





WET WEATHER

COLD WEATHER STSP PU BOOTS

CSA GRADE 1 STEEL TOE, STEEL PLATE. ESR.

STYLE: PB661841MWCSA

SIZES: 8-15 Full Sizes Only (excl. size 12)



- Lightweight, long wearing PU upper.
- Thermo+ extreme cold weather lining.
- Dunlop polyurethane footbed.
- Polyurethane outsole provides high traction in wet environments.
- Static dissipative.



WET WEATHER

"EXPLORER" STSP VIBRAM PU BOOTS

CSA GRADE 1 STEEL TOE, STEEL PLATE. ESR.

STYLE: E902033

SIZES: 6-15 Full Sizes Only (excl. size 12)



- Flexible Purofort upper.
- Dunlop branded red welded lining.
- Premium footbed.
- Vibram® Fire & Ice outsole.



WET WEATHER

LOW-CUT, WIDE FIT OVERSHOES

NON-SAFETY.

STYLE: A1305B-11

SIZES: 6-17 Full Sizes Only



- Rubber upper.
- Extra wide opening.
- Extra wide fit.



WET WEATHER

SINGLE STRAP WORK BOOT OVERSHOES

NON-SAFETY.

STYLE: 3186-11A

SIZES: 6-15 Full Sizes Only



- Rubber upper.
- Unlined.
- Rubber outsole.
- Non-safety.



M E N ' S

WINTER



Ideal for outdoor work in the winter months, these sleek Dakota safety boots feature TARANTULA ANTI-SLIP outsoles that are specially designed to keep you sure-footed on ice. To combat the cold, they are equipped with our innovative T-MAX insulation and a removable liner system. Composite toes and plates protect your feet against impacts and punctures, while QUAD COMFORT technology helps to reduce fatigue. The work boots feature waterproof and oil-resistant full grain leather uppers, with molded TPU toe caps to protect them against wear and tear. HYPER-DRI HD3 waterproof breathable membranes add an extra barrier against moisture, keeping your feet comfortable and dry.

DAKOTA

WINTER

"8901" TRANSITIONAL CTCP HD3 WATERPROOF BOOTS

CSA GRADE 1 COMPOSITE TOE, COMPOSITE PLATE. ESR.

STYLE: 5ANFDKW7-8901

SIZES: 7-14 Full Sizes Only

Diesel and oil resistant waterproof, full grain leather upper.

Removable liner system.

HYPER-DRI HD3 waterproof, breathable membrane.

LINER AVAILABLE
SIZE: 7-14 Full Sizes Only
STYLE: 5ANF7-LNR-8901



400g T-MAX insulation.

TARANTULA ICEFX rubber outsole.

Tested to a true temperature rating of -40 to -50 degrees Celcius.

TPU DURATOE guard.



DAKOTA

WINTER

"8907" CTCP TRANSITIONAL BOOTS

CSA GRADE 1 COMPOSITE TOE, COMPOSITE PLATE. ESR.

STYLE: 5ANFDKW0-8907

SIZES: 7-14 Full Sizes Only

- Action leather upper.
- Mesh lining with 400g T-MAX insulation.
- Removable EVA footbed.
- TARANTULA ICEFX rubber outsole.
- Tested to a true temperature rating of -40 to -50 degrees Celcius.



DAKOTA

WINTER

THERMALECTRIC HEATED CTCP TRANSITIONAL BOOTS

CSA GRADE 1 COMPOSITE TOE, COMPOSITE PLATE. ESR.

STYLE: 5ANFDK8-8911

SIZES: 7-14 Full Sizes Only

- Waterproof action leather upper.
- Mesh lining with 400g T-MAX insulation.
- Thermalelectric heating technology.
- Removable EVA footbed with Aerogel.
- Rubber outsole with Green Diamond.



DAKOTA

WINTER

TRACTION ON DEMAND CTCP WINTER BOOTS

CSA GRADE 1 COMPOSITE TOE, COMPOSITE PLATE. ESR.

STYLE: 5ANFDKW8-8912

SIZES: 7-14 Full Sizes Only



- High abrasion Assems nylon upper.
- Mesh lining with 400g T-MAX insulation.
- HYPER-DRI HD3 waterproof, breathable membrane.
- Removable T-MAX footbed with Aerogel.
- Poured polyurethane midsole.
- Rubber outsole with Traction On Demand technology.



DAKOTA

WINTER

"8530" STSP FELT PACK BOOTS

CSA GRADE 1 STEEL TOE, STEEL PLATE. ESR.

STYLE: 5ANFDKW8-8530

SIZES: 7-14 Full Sizes Only



- Textile upper.
- Removable liner with 200g T-MAX insulation.
- Lightweight EVA shell.
- Rubber outsole.
- Tested to a true temperature rating of -50 to -60 degrees Celcius.

LINER AVAILABLE
SIZE: 7-17 Full Sizes Only
STYLE: LNR-8530DWG



DAKOTA

WINTER

"8527" STSP LEATHER FELT PACK BOOTS

CSA GRADE 1 STEEL TOE, STEEL PLATE. ESR.

STYLE: 5ANFDKW8-8527

SIZES: 7-14 Full Sizes Only



- Waterproof leather upper.
- Removable liner with 200g T-MAX insulation.
- Lightweight EVA shell.
- TARANTULA ICEFX rubber outsole with Green Diamond technology.
- Test to a true temperature rating of -40 to -50 degrees Celcius.



DAKOTA

WINTER

"8524" CTCP SYNTROL FELT PACK BOOTS

CSA GRADE 1 COMPOSITE TOE, COMPOSITE PLATE. ESR.

STYLE: 5ANFDKW6-8524

SIZES: 7-15 Full Sizes Only



- Oil, diesel and chemical resistant Syntrol upper.
- Oil resistant polyurethane shell.
- Superior removable liner system with 400g T-MAX insulation.
- 6mm frost plug helps keep feet dry.
- Oil resistant midsole.
- Oil and diesel resistant TARANTULA ICEFX outsole.
- Tested to a true temperature rating of -50 to -60 degrees Celcius.

LINER AVAILABLE
SIZE: 7-15 Full Sizes Only
STYLE: 5ANF-LNR-8524





WINTER

CTCP WINTER BOOTS

CSA GRADE 1 COMPOSITE TOE, COMPOSITE PLATE. ESR.

STYLE: HHF186118

SIZES: 7-15 Full Sizes Only

EXCLUSIVELY AT
Mark's

- Oil resistant fabric upper.
- Polyurethane shell.
- Removable liner with 200g T-MAX insulation.
- Rubber outsole with ICEFX.
- Tested to a true temperature rating of -50 to -60 degrees Celcius.

LINER AVAILABLE
SIZE: 7-15 Full Sizes Only
STYLE: HHF19-LNR-6118



WINTER

CTCP FELT PACK WINTER BOOTS

CSA GRADE 1 COMPOSITE TOE, COMPOSITE PLATE. ESR.

STYLE: HHF146111

SIZES: 7-15 Full Sizes Only

- HELCORE 3D carbon upper is oil, diesel and chemical resistant.
- Removable truForm liner for comfort, stability and thermal protection.
- Rubber outsole with ICEFX.
- 400g T-MAX insulation.
- Seam sealed waterproof polyurethane shell.
- Frost plug footbed.
- Tested to a true temperature rating of -40 to -50 degrees Celcius.

EXCLUSIVELY AT
Mark's



WINTER

CTCP WINTER BOOTS

CSA GRADE 1 COMPOSITE TOE, COMPOSITE PLATE. ESR.

STYLE: HHF196119

SIZES: 7-14 Full Sizes Only

- Abrasion resistant leather and nylon ripstop leather.
- HELLY TECH performance waterproof technology.
- EVA midsole.
- Removable EVA footbed with T-MAX heat lining.
- Removable liner with T-MAX insulation.
- ICEFX rubber outsole.

LINER AVAILABLE
SIZE: 7-14 Full Sizes Only
STYLE: HHF196119



WINTER

"CROSSBOW" CTCP TRANSITIONAL BOOTS

CSA GRADE 1 COMPOSITE TOE, COMPOSITE PLATE. ESR.

STYLE: 915605

SIZES: 7-14 Full Sizes Only

- Full grain waterproof leather upper.
- Full polyurethane shell.
- Removable 4 layer liner system.
- High traction rubber outsole.
- METAL FREE





MEN'S & WOMEN'S

DUTY BOOTS

Danner
SINCE 1932

DUTY

MEN'S 8" ACADIA DUTY BOOTS

CSA GRADE 1 COMPOSITE TOE, COMPOSITE PLATE.

STYLE: 22500-IW

SIZES: 7-12,13,14

NOT AVAILABLE AT MARK'S STORES.
CONTACT YOUR MARK'S
COMMERCIAL REPRESENTATIVE.

- Full grain polishable leather and 1000 Denier nylon upper.
- Waterproof, breathable GORE-TEX lining.
- Composite toe is non-metallic that will not set off metal detectors.
- Vibram® Kletterlift outsole provides superb shock absorption, great traction and stability.
- Stitchdown construction offers increased stability underfoot.
- Certified ASTM F2413-11M I/75 C/75 EH.



Danner
SINCE 1932

DUTY

MEN'S 8" LOOKOUT SIDE ZIP DUTY BOOTS

CSA GRADE 1 COMPOSITE TOE, COMPOSITE PLATE. ESR.

STYLE: 23826

SIZES: 6-12,13,14,15,16

NOT AVAILABLE AT MARK'S STORES.
CONTACT YOUR MARK'S
COMMERCIAL REPRESENTATIVE.

- Full grain, polishable leather upper, semi-locking side zipper, 100% waterproof barrier.
- Non-metallic composite toe will not set off metal detectors.
- Oil and slip-resistant, superior traction.
- Patent pending plush dual-density footbed and Airthotic heel clip for support.
- Body fluid borne pathogen resistant. EH certified.
- Puncture resistant midsole.
- Certified ASTM F2413-11M I/75 C/75EH, NFPA Sec 137.4



BATES

DUTY

MEN'S 8" GX-8 GTX SIDE ZIP DUTY BOOTS

CSA GRADE 1 COMPOSITE TOE, COMPOSITE PLATE. ESR.

STYLE: E02284

SIZES: 7-12,13,14

NOT AVAILABLE AT MARK'S STORES.
CONTACT YOUR MARK'S
COMMERCIAL REPRESENTATIVE.

- Full grain leather upper.
- 200g Thinsulate™ insulation.
- Gore-Tex waterproof lining.
- Full cushioned removable comfort insole.
- Compression molded EVA midsole.
- Oil and slip-resistant rubber outsole.
- Cement construction.
- Compression molded EVA midsole.



BATES

DUTY

WOMEN'S 8" GX-8 SIDE ZIP DUTY BOOTS

CSA GRADE 1 COMPOSITE TOE, COMPOSITE PLATE. ESR.

STYLE: E02784

SIZES: 5-10,11

NOT AVAILABLE AT MARK'S STORES.
CONTACT YOUR MARK'S
COMMERCIAL REPRESENTATIVE.

- 200gm. of Thinsulate™ insulation for foot comfort regulation.
- Heavy gauge nylon side zipper.
- Full cushioned removable comfort insole.
- Compression molded EVA midsole.
- Oil and slip-resistant rubber outsole.
- Cement construction.
- CSA approved flexible Lensi PS4 Protective.
- Midsole plate.





W O M E N ' S

8 INCH BOOTS



AGGRESSOR

8 INCH BOOTS

STSP WORK BOOTS

CSA GRADE 1 STEEL TOE, STEEL PLATE. ESR.

STYLE: 5B0AAG6-8500

SIZES: 5-11 incl. half sizes

- Buffalo leather upper.
- Polyurethane toe guard.
- Breathable mesh and foam lining.
- Removable one density footbed.
- Durable and lightweight polyurethane outsole.



DAKOTA

8 INCH BOOTS

"8030" STSP WORK BOOTS

CSA GRADE 1 STEEL TOE, STEEL PLATE. ESR.

STYLE: 5B0ADK7-8030

SIZES: 5,6-11

- Full grain leather upper.
- DRI-TEC with FRESHTECH treated lining.
- 200g T-MAX insulation.
- Removable polyurethane footbed.
- EVA midsole.
- TARANTULA ANTI-SLIP rubber outsole.



DAKOTA

8 INCH BOOTS

"8006" STCP WORK BOOTS

CSA GRADE 1 STEEL TOE, COMPOSITE PLATE. ESR.

STYLE: 5B0ADK4-8006

SIZES: 5,6-11

- Nubuck leather upper.
- Polyurethane DURATOE guard.
- Cambrelle® lining with 200g T-MAX insulation.
- Removable 4 density footbed.
- Direct injected polyurethane midsole.
- TARANTULA ANTI-SLIP rubber outsole.



DAKOTA

8 INCH BOOTS

STSP QUAD LITE WORK BOOTS

CSA GRADE 1 STEEL TOE, STEEL PLATE. ESR.

STYLE: 5B0ADK9-8016

SIZES: 6-10,11

- Leather upper.
- Removable contoured footbed.
- Additional EVA comfort layer.
- Compression molded EVA midsole.
- TARANTULA ANTI-SLIP rubber outsole.



DAKOTA

8 INCH BOOTS

STCP INTERNAL METGUARD WORK BOOTS

CSA GRADE 1 STEEL TOE, COMPOSITE PLATE. ESR.

STYLE: 5B0ADK5-8112

SIZES: 6-11 incl. half sizes



- Full grain leather upper with side zipper.
- Internal metatarsal protection.
- Breathable and moisture wicking mesh lining.
- 200g T-MAX insulation.
- Removable 4 density footbed.
- Injected polyurethane midsole.
- TARANTULA ANTI-SLIP rubber outsole.



HH
workwear

8 INCH BOOTS

"BERGEN" STCP WATERPROOF BOOTS

CSA GRADE 1 STEEL TOE, COMPOSITE PLATE. ESR.

STYLE: HHS202181W

SIZES: 6-11 incl. half sizes



- Waterproof leather upper.
- DRI-TEC with FRESHTECH treated lining.
- 200g T-MAX insulation.
- Hellytech® waterproof membrane.
- Removable EVA footbed.
- EVA midsole. Rubber outsole.

EXCLUSIVELY AT
Mark's



CAT

8 INCH BOOTS

"CLOVER" STSP WORK BOOTS

CSA GRADE 1 STEEL TOE, STEEL PLATE. ESR.

STYLE: P311182

SIZES: 5-10,11



- Full grain leather upper with knit collar.
- Nylon lining.
- EASE footbed.
- Molded EVA midsole.
- Rubber outsole.



WOLVERINE

8 INCH BOOTS

"CONDOR" CTCP WATERPROOF BOOTS

CSA GRADE 1 COMPOSITE TOE, COMPOSITE PLATE. ESR.

STYLE: W75126

SIZES: 5-10,11



- Waterproof leather upper.
- Moisture wicking mesh lining.
- Removable dual density comfort cushion footbed.
- 200g Thinsulate™ insulation.
- Sculpted oil and slip resistant rubber outsole.



A close-up photograph of a black rubber boot sole. The sole features a grid-like tread pattern. In the center, there is a black triangular logo with the letters 'HH' in white, and the words 'WORK WEAR' written vertically in small white letters to the left of the 'H's.

W O M E N ' S

6 INCH BOOTS

AGGRESSOR

6 INCH BOOTS

STSP WORK BOOTS

CSA GRADE 1 STEEL TOE, STEEL PLATE. ESR.

STYLE: 5B0BAG4-6500

SIZES: 5,6-11

These women's Aggressor work boots are built for safety and comfort. Tough Nubuck uppers feature durable toe bumpers and breathable mesh and foam linings and are designed for comfort. Removable insoles make room for custom orthotics, and durable polyurethane outsoles are lightweight to discourage foot fatigue. Recommended for general trade, manufacturing, warehousing and distribution workers, these boots feature Grade 1 steel toes and plates and they're electric shock resistant.



DAKOTA

6 INCH BOOTS

"6030" STSP WORK BOOTS

CSA GRADE 1 STEEL TOE, STEEL PLATE. ESR.

STYLE: 5B0BDK7-6030

SIZES: 6-10,11

- Nubuck leather upper.
- Removable polyurethane footbed with arch support.
- Breathable mesh lining.
- Lightweight polyurethane midsole.
- Durable TPU outsole.



DAKOTA

6 INCH BOOTS

"6006" STCP WORK BOOTS

CSA GRADE 1 STEEL TOE, COMPOSITE PLATE. ESR.

STYLE: 5B0BDK6-6006

SIZES: 5,6-11

- Nubuck leather upper.
- Polyurethane DURATOE guard.
- Cambrelle® lining with 200g T-MAX insulation.
- Removable 4 density footbed.
- Direct injected polyurethane midsole.
- TARANTULA ANTI-SLIP rubber outsole.



DAKOTA

6 INCH BOOTS

QUAD LITE STSP WORK BOOTS

CSA GRADE 1 STEEL TOE, STEEL PLATE. ESR.

STYLE: 5B0BDK5-6016

SIZES: 6-10,11

- Nubuck leather upper.
- Removable footbed
- Breathable mesh lining.
- EVA midsole.
- TARANTULA ANTI-SLIP rubber outsole.



HH
workwear

6 INCH BOOTS

"BERGEN" STCP WATERPROOF BOOTS

CSA GRADE 1 STEEL TOE, COMPOSITE PLATE. ESR.

STYLE: HHS161060W

SIZES: 6-11 incl. half sizes

EXCLUSIVELY AT
Mark's

- Waterproof leather upper.
- DRI-TEC with FRESHTECH treatment lining.
- 200g T-MAX insulation.
- HELLY TECH waterproof membrane.
- Removable EVA footbed.
- EVA midsole.
- Rubber outsole.



Tough and ready for long days on the jobsite, these Helly Hansen women's work boots meet CSA Grade 1 requirements for toe and underfoot protection. They also resist electric shock. The six-inch boots are fully insulated for cold weather conditions. They feature moisture-wicking linings and are treated to inhibit the growth of fungi, mold and mildew as well as odour-causing bacteria.

HH
workwear

6 INCH BOOTS

HIGH ABRASION WORK BOOTS

CSA GRADE 1 ALUMINUM TOE, COMPOSITE PLATE. ESR.

STYLE: HHF191061W

SIZES: 5-11 incl. half sizes





6 INCH BOOTS

"ABBEY" STCP PULL-ON WORK BOOTS

CSA GRADE 1 STEEL TOE, COMPOSITE PLATE. ESR.

STYLE: P310912

SIZES: 5-10 incl. half sizes

- Nubuck leather upper.
- Molded heel counter.
- Nylon mesh lining.
- Lightweight EVA midsole.
- Rubber outsole.



6 INCH BOOTS

"EXCAVATOR SUPERLITE" WATERPROOF CTCP BOOTS

CSA GRADE 1 COMPOSITE TOE, COMPOSITE PLATE. ESR.

STYLE: P311382

SIZES: 5-10,11

- Waterproof Nubuck leather upper.
- Breathable nylon mesh lining with 200g Thinsulate®.
- Waterproof.
- Durable TPU toe guard.
- Cushioning polyurethane midsole.
- Extreme slip-resistant rubber outsole.



AVAILABLE IN QUEBEC ONLY
6 INCH BOOTS

"HIGHTOWER" ATSP WORK BOOTS

CSA GRADE 1 ALUMINUM TOE, STEEL PLATE. ESR.

STYLE: TBOA1Q6K001

SIZES: 5.5-10,11

- Full grain waterproof leather upper.
- Antimicrobial treated lining.
- Waterproof membrane.
- Removable anti-fatigue footbed.
- All weather TPU outsole.



6 INCH BOOTS

"SEATTLE" ATCP WATERPROOF BOOTS

CSA GRADE 1 ALUMINUM TOE, COMPOSITE PLATE. ESR.

STYLE: 1022104

SIZES: 5-10,11

- Waterproof leather upper.
- KEEN.DRY waterproof, breathable membrane.
- EVA midsole.
- Heat, oil and slip resistant rubber outsole.





W O M E N ' S

HIKERS

AGGRESSOR

HIKERS

LOW-CUT STSP HIKERS

CSA GRADE 1 STEEL TOE, STEEL PLATE. ESR.

STYLE: 5B0CAG9-2501

SIZES: 5-11 incl. half sizes

Built for comfort as well as on-the-job protection, these women's Aggressor hikers feature steel toes and plates. The shoes are waterproof and they're treated with FRESHTECH to inhibit odour-causing bacteria. Padded collars protect the ankles and EVA underfoot adds valuable support.



AGGRESSOR

HIKERS

MID-CUT STSP HIKERS

CSA GRADE 1 STEEL TOE, STEEL PLATE. ESR.

STYLE: 5B0CAG9-2502

SIZES: 5-11 incl. half sizes

- Textile and polyurethane upper.
- DRI-TEC with FRESHTECH treated lining.
- Removable EVA footbed.
- EVA midsole.
- Rubber outsole.



DAKOTA

HIKERS

MID-CUT ATCP HIKERS

CSA GRADE 1 ALUMINUM TOE, COMPOSITE PLATE. ESR.

STYLE: 5B0CDK0-2007

SIZES: 6-10 incl. half sizes

- Synthetic and breathable mesh upper.
- Breathable mesh lining.
- Removable footbed.
- EVA midsole.
- TARANTULA ANTI-SLIP rubber outsole.
- Added rubber heel and toe protection.



DAKOTA

HIKERS

LOW-CUT ATCP HIKERS

CSA GRADE 1 ALUMINUM TOE, COMPOSITE PLATE. ESR.

STYLE: 5B0CDK2-2003

SIZES: 5-11 incl. half sizes

- Rubber, polyurethane and mesh upper.
- Breathable PK mesh lining.
- Lightweight and cushioning EVA midsole.
- Removable cushioned footbed.
- TARANTULA ANTI-SLIP rubber outsole.



DAKOTA

HIKERS

"2120" WATERPROOF STCP HIKERS

CSA GRADE 1 STEEL TOE, COMPOSITE PLATE. ESR.

STYLE: 5B0CDK8-2120

SIZES: 5,6-11

- Waterproof, leather upper.
- Breathable mesh lining with FRESHTECH.
- Polyurethane midsole.
- HYPER-DRI HD3 waterproof membrane.
- TARANTULA ANTI-SLIP rubber outsole.



HH
workwear

HIKERS

LOW-CUT ATCP HIKERS

CSA GRADE 1 ALUMINUM TOE, COMPOSITE PLATE. ESR.

STYLE: HHS181009W

SIZES: 6-11 incl. half sizes

These rugged Helly Hansen safety shoes are made with high abrasion mesh uppers, which are covered with TPU overlays at key points for extra durability. Rubber toe bumpers at the front help to extend the life of the shoes even further. The hiking-style work shoes are equipped with aluminum toes to protect against impacts from falling objects, and they have composite plates for underfoot protection. EVA midsoles and Ortholite® insoles provide lightweight cushioning and shock absorption, keeping them comfortable to wear all day long.

EXCLUSIVELY AT
Mark's





HIKERS

MID-CUT ATCP HIKERS

CSA GRADE 1 ALUMINUM TOE, COMPOSITE PLATE. ESR.

STYLE: HHS191010W

SIZES: 6-11 incl. half sizes

- High abrasion mesh upper with welded TPU overlays.
- Durable rubber toe bumper.
- Removable Ortholite® footbed.
- Compression molded EVA midsole.
- Rubber outsole.

EXCLUSIVELY AT
Mark's



HIKERS

"JOURNEY" CTCP WATERPROOF HIKERS

CSA GRADE 1 COMPOSITE TOE, COMPOSITE PLATE. ESR.

STYLE: 305003DW

SIZES: 6-10 incl. half sizes

- Waterproof leather upper.
- TPU heel guard/rubber toe guard.
- Breathable mesh lining with 200g Thinsulate® insulation.
- Waterproof membrane.
- Removable EVA footbed.
- EVA midsole.
- Rubber outsole.



HIKERS

"WINDOC" MID-CUT STSP WATERPROOF BOOTS

CSA GRADE 1 STEEL TOE, STEEL PLATE. ESR.

STYLE: J17862

SIZES: 5-11 incl. half sizes

- Waterproof suede and mesh upper.
- Breathable mesh lining.
- Waterproof membrane.
- Removable EVA footbed.
- Lightweight and cushioning EVA midsole.
- Oil and slip-resistant rubber outsole.



HIKERS

"SIREN" ATCP WATERPROOF HIKERS

CSA GRADE 1 ALUMINUM TOE, COMPOSITE PLATE. ESR.

STYLE: J099354

SIZES: 5-11 incl. half sizes

- Waterproof Nubuck and breathable mesh upper.
- Breathable mesh lining.
- Waterproof membrane.
- Removable COMFORTBASE™ footbed.
- Lightweight and cushioning comfort base EVA midsole.
- Slip-resistant rubber outsole.





DAKOTA

W O M E N ' S

CASUAL

AGGRESSOR

CASUAL

ATHLETIC STSP SHOE

CSA GRADE 1 STEEL TOE, STEEL PLATE. ESR.

STYLE: 5B0DAG9-1501

SIZES: 5-11 incl. half sizes

- Textile upper.
- DRI-TEC with FRESHTECH treated lining.
- Removable EVA footbed.
- Rubber pods in outsole.
- EVA midsole.



DAKOTA

CASUAL

LIGHTWEIGHT ATSP CANVAS ATHLETICS

CSA GRADE 1 ALUMINUM TOE, STEEL PLATE. ESR.

STYLE: 5B0DDK8-1007

SIZES: 5-11 incl. half sizes

- Cotton canvas upper.
- Lightweight canvas lining with FRESHTECH treatment.
- EVA midsole.
- Rubber outsole.



DAKOTA

CASUAL

LIGHTWEIGHT CANVAS SLIP-ON ATSP ATHLETICS

CSA GRADE 1 ALUMINUM TOE, STEEL PLATE. ESR.

STYLE: 5B0DDK9-1008

SIZES: 5-11 incl. half sizes

- Cotton canvas upper.
- Lightweight canvas lining with FRESHTECH treatment.
- EVA midsole.
- Rubber outsole.



DAKOTA

CASUAL

LIGHTWEIGHT CANVAS LACE-UP ATSP ATHLETICS

CSA GRADE 1 ALUMINUM TOE, STEEL PLATE. ESR.

STYLE: 5B0DDK9-1009

SIZES: 5-11 incl. half sizes

- Cotton canvas upper.
- Lightweight canvas lining with FRESHTECH treatment.
- EVA midsole.
- Rubber outsole.



DAKOTA

CASUAL

QUAD LITE ATSP ATHLETICS

CSA GRADE 1 ALUMINUM TOE, STEEL PLATE. ESR.

STYLE: 5B0DDK7-3602

SIZES: 6-10,11

- Breathable Microfibre and mesh upper.
- Breathable nylon lining.
- Removable footbed.
- Cushioning EVA midsole.
- Lightweight TARANTULA ANTI-SLIP rubber outsole.



HH
workwear

CASUAL

ATSP ATHLETICS

CSA GRADE 1 ALUMINUM TOE, STEEL PLATE. ESR.

STYLE: HHS201006W

SIZES: 6-10 incl. half sizes

EXCLUSIVELY AT
Mark's

- Lightweight, breathable mesh and polyurethane upper.
- Reinforced polyurethane welded toe and heel for additional protection.
- Breathable mesh lining.
- Removable moisture wicking Ortholite® footbed.
- Rubber outsole.



KODIAK

CASUAL

"TAJA" STCP LACE-UP SAFETY SHOE

CSA GRADE 1 STEEL TOE, COMPOSITE PLATE. ESR.

STYLE: 308004BLK

SIZES: 5,6-10

- Stretchable action leather upper.
- Stretch nylon comfort lining.
- Removable Ortholite® footbed.
- Lightweight EVA flexible midsole.
- KODIAK® ultimate slip and oil resistant rubber outsole.



KODIAK

CASUAL

"BRITT" STCP SLIP-ON SAFETY SHOE

CSA GRADE 1 STEEL TOE, COMPOSITE PLATE. ESR.

STYLE: 308005BLK

SIZES: 5,6-10,11

- Stretchable action leather upper.
- Stretch nylon comfort lining.
- Removable Ortholite® footbed.
- Lightweight EVA flexible midsole.
- KODIAK® ultimate slip and oil resistant rubber outsole.





CASUAL

"WOODWARD" STSP ATHLETICS

CSA GRADE 1 STEEL TOE, STEEL PLATE. ESR.

STYLE: P310493

SIZES: 5-10 incl. half sizes

- Leather upper with nylon mesh inserts.
- Breathable nylon mesh lining.
- Removable EASE footbed.
- Molded EVA midsole.
- Extreme slip-resistant rubber outsole.



CASUAL

"SPRINT" ATCP ATHLETICS

CSA GRADE 1 ALUMINUM TOE, COMPOSITE PLATE. ESR.

STYLE: P311387

SIZES: 5-10,11

- Mesh upper.
- Breathable nylon mesh upper.
- Removable footbed.
- Cushioning EASE midsole.
- Slip-resistant rubber outsole.



CASUAL

"SPRINT MID" ATCP ATHLETICS

CSA GRADE 1 ALUMINUM TOE, COMPOSITE PLATE. ESR.

STYLE: P311392

SIZES: 5-10,11

- Mesh and coated leather upper.
- Breathable nylon mesh lining.
- Removable footbed.
- Cushioning EASE midsole.
- Slip-resistant rubber outsole.



CASUAL

"POWERTRAIN SPORT" ATCP ATHLETICS

CSA GRADE 1 ALUMINUM TOE, COMPOSITE PLATE. ESR.

STYLE: TB0A1RTM001

SIZES: 5.5-10,11

EXCLUSIVELY AT
Mark's

- Ripstop nylon upper.
- TPU toe overlay for added durability and protection.
- Mesh lining with anti-microbial treatment.
- Single density polyurethane anti-fatigue footbed.
- Dual density polyurethane outsole.





TARANTULA®

W O M E N ' S

ANTI-SLIP



DAKOTA

ANTI-SLIP

NON-SAFETY ANTI-SLIP SHOE

NON-SAFETY.

STYLE: 5B0DDK0-3108

SIZES: 5-11 incl. half sizes

These Oxford-style safety shoes have breathable linings and anti-microbial treatment keep your feet dry while reducing odour. The anti-slip outsoles on these safety shoes give you traction control in slippery areas, making them an ideal option for kitchen, maintenance and janitorial workers.



DAKOTA

ANTI-SLIP

NON-SAFETY LACE-UP SHOE

NON-SAFETY.

STYLE: 5B0DDK0-3106

SIZES: 5-11 incl. half sizes

- Microfibre and polyurethane upper.
- Breathable mesh lining with FRESHTECH.
- Removable EVA footbed.
- Cushioning EVA midsole.
- TARANTULA ANTI-SLIP rubber outsole.



DAKOTA

ANTI-SLIP

STSP LACE-UP OXFORD SHOE

CSA GRADE 1 STEEL TOE, STEEL PLATE. ESR.

STYLE: 5B0DDK0-3105

SIZES: 5-11 incl. half sizes

- Microfibre and polyurethane upper.
- Breathable mesh lining with FRESHTECH.
- Removable EVA footbed.
- Cushioning EVA midsole.
- TARANTULA ANTI-SLIP rubber outsole.



DAKOTA

ANTI-SLIP

STSP ANTI-SLIP SLIP-ON SHOE

CSA GRADE 1 STEEL TOE, STEEL PLATE. ESR.

STYLE: 5B0DDK0-3107

SIZES: 5-11 incl. half sizes

- Microfibre and polyurethane upper.
- Breathable mesh lining with FRESHTECH.
- Removable EVA footbed.
- Cushioning EVA midsole.
- TARANTULA ANTI-SLIP rubber outsole.



SKECHERS
WORK

ANTI-SLIP

ATSP LACE-UP SLIP-RESISTANT SHOE

CSA GRADE 1 ALUMINUM TOE, STEEL PLATE. ESR.

STYLE: 99996595

SIZES: 5-10,11

- Knit upper with synthetic overlays.
- Breathable mesh lining.
- Removable air-cooled memory foam footbed.
- Cushioning EVA midsole.
- Slip resistant rubber outsole.

EXCLUSIVELY AT
Mark's



SKECHERS
WORK

ANTI-SLIP

STSP SLIP-RESISTANT SHOE

CSA GRADE 1 STEEL TOE, STEEL PLATE. ESR.

STYLE: 99996596

SIZES: 5-10,11

- Mesh upper with synthetic overlays.
- Breathable soft Lycra lining.
- Cushioning EVA midsole.
- Removable air-cooled memory foam footbed.
- Slip resistant rubber outsole.

EXCLUSIVELY AT
Mark's



SKECHERS

ANTI-SLIP

"ELDRED" SLIP-RESISTANT LACE-UP SHOE

NON-SAFETY.

STYLE: 76551

SIZES: 5-10,11,12

- Smooth leather upper with mesh fabric collar and heel panel.
- Relaxed fit design for a roomy comfortable fit.
- Soft fabric lining.
- Removable Memory Foam topped cushioning footbed.
- EVA midsole.
- Slip-resistant Nitrile rubber traction outsole.





W O M E N ' S

STATIC DISSIPATIVE

SKECHERS
WORK

STATIC DISSIPATIVE

STSP SD LACE-UP SLIP-RESISTANT SHOE

CSA GRADE 1 STEEL TOE, STEEL PLATE. SD.

STYLE: 99B96553

SIZES: 5-10,11

These Skechers Work shoes help to protect you against dangerous static buildup in the workplace by conducting static electricity through the shoe and into the ground. For comfort, they are breathable and have Air Cooled Memory foam insoles as well as cushioned midsoles. Slip-resistant rubber outsoles add traction in areas that are prone to moisture and grease.

EXCLUSIVELY AT
Mark's



Mellow Walk

STATIC DISSIPATIVE

SD SAFETY TOE LACE-UP SHOE

STATIC DISSIPATIVE.

STYLE: 420092

SIZES: 5-11 incl. half sizes

- Brushed suede and premium leather upper.
- Moisture wicking lining.
- Removable cushioning footbed.
- Extremely lightweight polyurethane outsole.



Timberland PRO

STATIC DISSIPATIVE

"POWERTRAIN SPORT" SD ATCP SHOE

CSA GRADE 1 ALUMINUM TOE, COMPOSITE PLATE. SD.

STYLE: TB0A1WE6001

SIZES: 5.5-10,11

- Nylon upper with TPU overlay.
- Mesh lining with anti-microbial treatment.
- Polyurethane midsole.
- Removable single density PU footbed.
- Heat, oil, slip and abrasion resistant polyurethane outsole.





W O M E N ' S

WET WEATHER

AGGRESSOR

WET WEATHER

NST INSULATED WET WEATHER BOOT

NON-SAFETY.

STYLE: 5B0EAG8-9601

SIZES: 6-10 even sizes only



- Adjustable cuff keeps snow and debris out.
- Removable insulated wool felt liner.
- Durable TPE injected construction.
- Self-cleaning multi-directional traction rubber outsole.

AGGRESSOR

WET WEATHER

INSULATED STSP WET WEATHER BOOT

CSA GRADE 1 STEEL TOE, STEEL PLATE. ESR.

STYLE: 5B0EAG4-9500

SIZES: 6-10 even sizes only



- Durable rubber TPO injected construction.
- Adjustable cuff keeps snow and debris out.
- Removable insulated wool felt liner.
- Self-cleaning multi-directional traction rubber outsole.
- Tested to a true temperature rating of -20 to -30 degrees Celcius.



WET WEATHER

STSP POLYURETHANE WET WEATHER BOOT

CSA GRADE 1 STEEL TOE, STEEL PLATE. SD.

STYLE: HHS166113W

SIZES: 5-10 even sizes only



Gear up for wet and muddy weather in these Helly Hansen women's waterproof safety boots with steel toes and plates. The work boots have lightweight PU midsoles for support and PU insoles for additional cushioning. The rubber outsoles provide impressive durability and reliable traction on wet surfaces. These boots are lined with Nylon for wearing comfort.

EXCLUSIVELY AT
Mark's



W O M E N ' S

WINTER

DAKOTA

WINTER

"8905" CTCP TRANSITIONAL WINTER BOOTS

CSA GRADE 1 COMPOSITE TOE, COMPOSITE PLATE. ESR.

STYLE: 5B0FDK8-8905

SIZES: 6-10 even sizes only

These Dakota women's 8905 safety boots are equipped with a pair of our signature technologies for protection on outdoor worksites. HYPER-DRI HD3 makes them waterproof and breathable and lightweight T-MAX insulation offers warmth and comfort. These tough boots have flat-molded EVA shells and full grain leather shafts. TARANTULA ICEFX rubber outsoles with GREEN DIAMOND technology help to maximize slip resistance on ice. CSA-compliant safety features include composite toes and plates and puncture resistance.



DAKOTA

WINTER

"THERMALECTRIC" CTCP WINTER BOOT

CSA GRADE 1 COMPOSITE TOE, COMPOSITE PLATE. ESR.

STYLE: 5B0FDK9-8906

SIZES: 6-10 even sizes only

- Waterproof full grain leather upper.
- Mesh lining with FRESHTECH treatment.
- 400g T-MAX insulation.
- Removable polyurethane sponge footbed.
- TARANTULA ICEFX rubber outsole.
- Thermaelectric heated technology.



DAKOTA

WINTER

CTCP FELT PACK WINTER BOOT

CSA GRADE 1 COMPOSITE TOE, COMPOSITE PLATE. ESR.

STYLE: 5B0FDK7-8520

SIZES: 6-10 even sizes only

- Synthetic polyurethane Nubuck leather upper.
- Lightweight EVA shell.
- Removable liner system.
- 400g T-MAX insulation.
- TARANTULA ICEFX rubber outsole.

LINER AVAILABLE
SIZE: 6-10 Even Sizes Only
STYLE: 5BOF-LNR-8520



Footwear Innovations



TARANTULA ANTI-SLIP®

Our TARANTULA ANTI-SLIP outsoles provide the ultimate in slip protection and dramatically reduce the likelihood that you'll slip or fall on wet/greasy surfaces. To achieve this high performance, the outsoles use a unique tread pattern and advanced compound to increase the coefficient of friction. Our anti-slip outsoles provide incredible grip to resist slipping on the majority of surfaces including wet, soapy, oily or greasy surfaces. To achieve this high performance, the footwear has a unique tread pattern and soft rubber compound to increase the coefficient of friction. Many other shoe outsoles hydroplane on wet surfaces, resulting in poor traction for the wearer. TARANTULA ANTI-SLIP outsoles, however, push liquids to the outside using unique micro channels, instead of keeping liquids underfoot.

DISCLAIMER: TARANTULA ANTI-SLIP® footwear has been tested for wet and dry conditions. They have not been tested for use on any type of ice. In order to qualify, they must meet or exceed our slip resistance standards.



DURATOE

DURATOE uses a molded toe cap that is applied to the outside of the work boot to increase the life of the toe area of the boot.



QUAD-COMFORT

The QUAD COMFORT footwear technology consists of a minimum of 4 comfort components, which address shock absorption, weight distribution, cushioning & pressure displacement and occasionally outsole performance. The construction of the footwear depends on their end use and the requirements of the footwear. The four components are integrated between the footbed or insole through to the bottom of the outsole. If a component provides a significant and functionally noticeable advantage, it may also comprise a feature that is incorporated into the upper of the footwear. Shock absorption is addressed by adding additional cushioning in the heel of the shoe as it is the first areas of contact when walking. Another component of comfort can be added under the ball of the foot to help distribute weight, alleviate pressure points and provide greater energy return. For cushioning and pressure displacement, our footwear uses lightweight, flexible functional midsoles that can be made up of many densities of cushioning. Lastly, outsoles are functionally engineered to provide the utmost in comfort, shock absorption and flexibility.

Other outsole materials may also be considered such as leather if they truly provide a comfort component or benefit to the end user. Our TARANTULA ANTI-SLIP outsoles can be used for QUAD COMFORT footwear to provide a high degree of slip resistance to reduce the likelihood of a slip or fall while still maintaining QUAD COMFORT features in their structure.



ARMOUR FLEX+® TECHNOLOGY

Non-metallic puncture resistant safety plates. This technology is a multi layer textile composite made from a high tenacity yarn. The woven fabric undergoes different treatments to reach the desired level of hardness while maintaining its flexibility. The ARMOUR-FLEX textile insole

can be sewn directly onto the upper and offers 100% protection of the bottom of the foot, as compared to the steel plate that only protects around 85% of the bottom of the foot. ARMOUR-FLEX will keep your feet warmer in winter because, unlike steel, it will not conduct heat away from your foot. ARMOURFLEX provides the technology that you need to keep your feet protected, while still allowing your foot to bend.



HYPER-DRI 3

100% Waterproof / Breathable

A waterproof barrier is laminated to the underside of the outer fabric and a durable water repellent (DWR) treatment is applied on the outside. Waterproof zippers and all seams on the garment are sealed to keep you and your valuables dry. Exceeding industry standards, HYPER-DRI 3 represents an impenetrable barrier to the elements while allowing body-generated moisture to escape. For HD3 footwear, the membrane must withstand over 5000 mm of water column without leaking and allow 5000 g/m² of moisture to pass through the fabric over a 24 hour period. Footwear is water tank tested to 50 000 foot flexes to simulate extreme conditions.



FRESHTECH®

FRESHTECH is a safe and invisible antimicrobial treatment that is applied to our footwear and garment products. In garments the treatment inhibits the growth of bacteria that cause odor. In footwear the treatment inhibits the growth of fungi, mold, and mildew, in addition to odor causing bacteria. The FRESHTECH treatment stops bacteria and fungi from reproducing, which creates a safe and comfortable product. We ensure the effectiveness and durability of FRESHTECH through standard testing.



T-MAX®

The warmest, lightest hypo-allergenic insulation on the market. It regulates body temperature by allowing moisture to move away from the body, keeping the body dry and comfortable.



VIBRAM®

Vibram soles are an expert integration of functional design and high performance compounds. Vibram ensures that demanding workers have reliable and safe products for their professional activities, in any situation, in any weather condition or environment. Grip, stability, heat and oil resistance, electrical hazard rated, flexibility: a boot powered by Vibram improves worker efficiency, performance, reliability and comfort.



VIBRAM FIRE & ICE®

The Vibram® Fire & Ice™ compound has been studied for extreme applications and maintains its performance values in a wide range of temperatures (from - 20°C to + 250°C). The formulation satisfies both requirements for fire resistance from NFPA and the Ross cold flex at -23°C.

Deciphering The Symbols



CSA Green Triangle

Indicates sole puncture protection with Grade 1 protective toecap which can withstand impacts of 125 joules (22.7 kg object falling from 56 cm above).



CSA White Rectangle with Orange Omega

Indicates soles that provide electric shock resistance. Intended to withstand 18,000 volts at 60Hz for one minute without disruptive discharge to ground; leakage current not exceeding 1mA.



CSA Yellow Rectangle

Indicates soles are static-dissipative.

Warning: This footwear should not be used where contact with live electrical conductors can occur.



CSA Blue Rectangle

Indicates Grade 1 protective toecap without sole puncture protection.



CSA Dark Grey Rectangle with White M

Indicates metatarsal protection. Note: Toe protection is required for all metatarsal protective footwear.

These boots are intended for industrial work environments where heavy objects can hurt the metatarsal region of the foot.

The Language of Footwear

ANSI

International standards organization that develops and publishes voluntary consensus technical standards for a range of materials.

Aerospace Lining

A breathable synthetic lining comprised of a mesh-like structure.

Anti-microbial

A chemical treatment applied to footwear linings which prevents microbe growth.

ATCP

Aluminum toe, composite plate.

Cement Construction

A shoe construction in which the upper of a shoe is cemented, rather than stitched, to the bottom of a shoe. Cement construction results in a lighter, more flexible shoe.

Contoured Footbed

An insole that molds to the shape of your foot.

Composite Plate

A safety, puncture resistant sole plate used in safety footwear in replacement of steel plates. A few varieties exist today, made of synthetic materials such as nylons, resins and also Kevlar.

CTCP

Composite toe, composite plate.

Dri-Tec

A generic term for breathable, moisture-wicking lining found in footwear.

Dual Density Midsole

A midsole that employs two different densities of cushioning foam.

ESR

Electrical shock resistance.

EVA

Ethylene Vinyl Acetate - A synthetic compound used for outsoles. EVA provides cushioning to the footbeds, midsoles, and is easily shaped by heat and pressure.

Footbed

Sometimes also referred to by customers as the insole. It is the foundation in footwear that rests under the foot and has a critical role in comfort.

Goodyear Welt Construction

A shoe construction in which the upper and sole of the shoe are stitched together, resulting in greater durability. The resulting seam is visible and runs around the outside of the shoe, where the upper and outsole meet.

Green Diamond Technology

Patented silica carbide crystals are embedded throughout the rubber outsole which are durable and long lasting traction on ice.

Heel Counter

Counters provide support and help the upper wrap around the foot.

Injection Molded Construction

A type of sole unit construction created by injecting material into the sole mold. Injection molded construction is an efficient way to mass-produce footwear.

Inseam

The hidden seam of a welted shoe holding together the welt, upper, lining and insole.

Metguard

A safety feature found in some boots which is comprised of a protective cap that covers the metatarsal area of the foot and protects against injury from impacts. Can be internal or external.

Moisture Wicking

Synthetic materials that have been developed specifically to channel perspiration away from the body.

Nubuck Leather

Nubuck is a type of leather with a soft, velvety surface and is far more durable than suede.

Oarprene

Rubber that is acid and oil resistant.

OrthoLite

OrthoLite insoles are made up of open-cell foam, allowing air to circulate around the foot, keeping it cooler inside the shoe. The open cell structure also moves moisture away from the foot, keeping it drier.

PU

Polyurethane; a type of man-made material.

PVC

Polyvinyl chloride. A semi-rigid plastic, often used in heel counters and outsoles for added support.

SD

Static Dissipating. The shoe dissipates static buildup on the body so as not to cause an arcing effect.

STSP

Steel toe, steel plate.

STCP

Steel toe, composite plate.

TPR

Thermo plastic rubber. A plastic material used by many manufacturers in the injection molding process.

TPU

Thermopolyurethane. Man made material used in footwear production on uppers, but also outsoles.

Upper

The part of the shoe that covers the top part of the foot, from heel to toe.

Welt

A strip of material sewn between the insole and the outsole to create greater durability.

Index

MEN'S

8 INCH BOOTS

102459	15	CMR6971
310090	10	HHS173001
5ANADK0-8550	5	HHS193002
5ANADK0-8560	7	HHS202026
5ANADK2-8006	2	HHS202027
5ANADK2-8500	2	HHS212042
5ANADK5-8529	3	P717627
5ANADK5-8529WP	3	P720204
5ANADK5-8877	2	P724582
5ANADK7-8410	3	TB0A1Q6R001
5ANADK7-8510	2	TR0A4NRFBLK
5ANADK8-8523	4	W197106
5ANADK9-8517	7	W207133
5ANADK9-8518	8	HIKERS
5ANADK9-8512	4	1020096
5ANADK9-8516	3	1020100
5ANADK9-8521	6	26039MDQC-AS
5ANADK9-8522	6	302120
5ANADK9-8537	6	302123
5ANADK9-8557	5	5ANCAG9-2000
5ANADK8024B	4	5ANCAG9-2300
8600FLX	5	5ANCDK0-2302
89645	8	5ANCDK5-2120
10-8680	15	5ANCDK7-2124
CMR1999	13	5ANCDK8-2127
CMR8939	15	5ANCDK0-2301
CMR8959	14	HHF171006
HHF182004	14	HHF171007
HHS172003	14	HHS191008
HHS192005	9	HHS191009
HHS202022	8	HHS191010
HHS202023	9	J099383
HHS212040	10	J17863
P717629	9	J17865
P720211	8	J19483W
P721620	10	KD0A4NL2A35
TB0A12EZ214	11	P720996
TB0A1Q5U214	11	TB0A1OP6001
TB0A1Q6Z001	12	CASUAL
TB0A1VYP001	13	10-501
T40A4NQ9FWE	12	1024610
W17463	13	108008BLL
W197107	10	5ANDDK0-1117QC
METGUARDS	11	5ANDDK0-1119QC
1022091	12	5ANDDK0-3819
5ANADK3-8112	18	5ANDDK0-3820
5ANADK7-8415	18	5ANDDK0-3821
5ANADK7-8514	18	5ANDDK0-3822
6 INCH BOOTS	18	5ANDDK5-3613
1021336	18	5ANDDK6-3617
5ANBDK2-6006	26	5ANDDK8-3603
5ANBDK2-6500	20	5ANDDK8-3604
5ANBDK6-6877	20	5ANDDK9-3621
5ANBDK8-6002	20	HHF204040
5ANBDK8-6108A	20	HHS194002
5ANBDK9-6114	21	HHS194003
5ANBDK9-6512	21	J17541
5ANBDK9-6516	21	P721642
5ANBDK9-6518	22	P724586
5ANBDK0-6557	22	P724589
91631	20	TB0A1GVQ001
	21	TB0A21RU001
	26	TB0A1RV3001

26	TB0A11ZU001
22	TB0A21SS001
24	ANTI-SLIP
23	5ANDDK0-3020
23	5ANDDK0-3021
23	5ANDDK0-3023
24	5ANDDK0-3025
24	5ANDDK0-3026
24	5ANDDK0-3027
26	77A77068
25	99999066
25	99999068
25	99999070
	99999071
34	99999110
34	STATIC DISSIPATIVE
29	5ANDDK9-3200
32	5ANDDK9-3201
33	TB0A1VDY001
28	WET WEATHER
28	3186-11A
28	5ANEAG2-9500
30	5ANEAG2-9600
30	5ANECH9-7501
29	5ANEDK5-9850
29	5ANEDK5-9860
30	8564
31	9699
31	A1305B-11
31	EC02A33
32	E902033
35	HHF146114
35	HHF146115
34	HHF196120
35	LICO-M001
32	LICO-MP01
33	NE68A93
33	PB661841MWCSA
	WINTER
43	5ANFDK8-8911
43	5ANFDKW0-8907
41	5ANFDKW6-8524
39	5ANFDKW7-8901
39	5ANFDKW8-8527
39	5ANFDKW8-8530
40	5ANFDKW8-8912
38	915605
39	HHF146111
37	HHF186118
38	HHF196119
37	
38	MEN'S & WOMEN'S
37	DUTY BOOTS
40	22500-IW
40	23826
40	E02284
43	E02784
41	
41	WOMEN'S
41	8 INCH BOOTS
42	5B0AAG6-8500
43	5B0ADK4-8006
42	5B0ADK5-8112

42	5B0ADK7-8030	63
42	5B0ADK9-8016	63
	HHS202181W	64
45	P311182	64
46	W75126	64
46	6 INCH BOOTS	
45	1022104	68
45	5B0BAG4-6500	66
45	5B0BDK5-6016	67
47	5B0BDK6-6006	66
46	5B0BDK7-6030	66
46	HHF191061W	67
47	HHS161060W	67
47	P310912	68
47	P311382	68
	TB0A1Q6K001	68
49	HIKERS	
49	305003DW	72
49	5B0CAG9-2501	70
	5B0CAG9-2502	70
55	5B0CDK0-2007	70
51	5B0CDK2-2003	71
51	5B0CDK8-2120	71
53	HHS181009W	71
51	HHS191010W	72
51	J099354	72
53	J17862	72
54	CASUAL	
55	308004BLK	75
54	308005BLK	75
55	5B0DAG9-1501	74
52	5B0DDK7-3602	75
52	5B0DDK8-1007	74
52	5B0DDK9-1008	74
53	5B0DDK9-1009	74
53	HHS201006W	75
54	P310493	76
55	P311387	76
	P311392	76
57	TB0A1RTM001	76
57	ANTI-SLIP	
58	5B0DDK0-3105	78
57	5B0DDK0-3106	78
58	5B0DDK0-3107	79
58	5B0DDK0-3108	78
58	76551	79
59	99996595	79
59	99996596	79
59	STATIC DISSIPATIVE	
59	420092	81
	99B96553	81
	TB0A1WE6001	81
	WET WEATHER	
61	5B0EAG4-9500	83
61	5B0EAG8-9601	83
61	HHS166113W	83
61	WINTER	
	5B0FDK7-8520	85
	5B0FDK8-8905	85
	5B0FDK9-8906	85
63		
63		
64		



HEAD OFFICE

205 Quarry Park Blvd. SE
Calgary, Alberta

P 1.855.592.7444

W markscommercial.com

Mark's Commercial is a proud member of the Canadian Tire Group of Companies.