



2024

INDUSTRIAL FOOTWEAR



Working Together Towards
An Incident Free Future

3 CONVENIENT WAYS TO SHOP FOR COMPANY FOOTWEAR

It's never been easier for company employees to purchase industrial footwear at your favorite Mark's store.

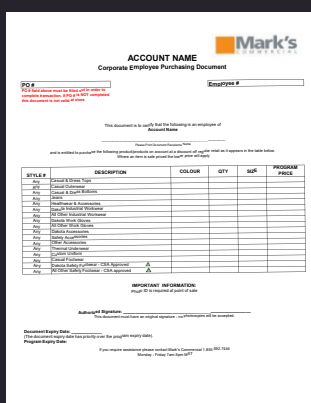


CLIENT SAVINGS CARD

Show the card at any Mark's store to receive your specified discount for a variety of store items shown on the card.

These cards are re-useable and valid until the expiry date found at the bottom of the card. The card must be presented for discounts to be applied against regular priced items.

(In the event of an item being sale priced, the lower price will apply.)



CLIENT VOUCHER

Simply show the voucher at any Mark's store to receive the specified discount shown for a variety of store items listed on the voucher.

The voucher must be shown for discounts to be applied against regular priced items. (In the event of an item being sale priced, the lower price will apply.)



CLIENT INDUSTRIAL FOOTWEAR PURCHASING CARD

Our new industrial footwear purchasing card contains all the benefits of the voucher combined with a more flexible client reporting experience and easier in-store purchasing.



Contents

MEN'S

8 INCH BOOTS	1
METGUARDS	20
6 INCH BOOTS	24
HIKERS	40
ATHLETIC	48
ANTI-SLIP	62
TACTICAL	67
STATIC DISSIPATIVE	70
WET WEATHER	72
WINTER BOOTS	80

WOMEN'S

8 INCH BOOTS	86
6 INCH BOOTS	91
HIKERS	99
ATHLETIC	103
ANTI-SLIP	111
STATIC DISSIPATIVE	115
WET WEATHER	117
WINTER BOOTS	120
FOOTWEAR	
INFORMATION	123

Sizes may be limited in some styles due to unforeseen circumstances. Consult your corporate sales person for the most up-to-date information on styles shown in this book.

Look for these symbols with each style to know if it's suitable for your profession.





8 INCH FOOTWEAR



AGGRESSOR

STYLE: 5ANADK2-8500

SIZES: 7-11,12,13,14

CSA GRADE 1 STEEL TOE, STEEL PLATE. ESR.

8" "8006" QUAD COMFORT STCP WORK BOOT

- Buffalo Nubuck leather upper.
- Breathable air mesh lining.
- Removable EVA footbed.
- Polyurethane toe guard.

EXCLUSIVELY AT

Mark's



DAKOTA

WORKPRO SERIES

STYLE: 5ANADK5-8877

SIZES: 7-11,12,13,14

CSA GRADE 1 STEEL TOE, STEEL PLATE. ESR.

Equipped with TPU DURATOE® durable toecaps over the tough, full-grain buffalo leather uppers, these Dakota boots have TARANTULA ANTI-SLIP™ rubber outsoles for excellent traction on slick surfaces. Warm and light T-MAX® INSULATION makes these boots ideal for use in cold environments. With CSA Grade 1 steel toes and steel plates, these work boots are ideal for construction and trades workers or general purpose applications.

8" "877" DURATOE® INSULATED STSP WORK BOOT

- Full grain Buffalo leather upper.
- TPU DURATOE® durable toe guard.
- Breathable and moisture wicking Air Mesh lining with 200g T-MAX® insulation.
- QUAD COMFORT®, a better way to walk.
- Polyurethane injected midsole.
- Removable EVA footbed.
- TARANTULA® ANTI-SLIP rubber outsole, engineered to help prevent slips and falls.

EXCLUSIVELY AT

Mark's





DAKOTA

WORKPRO SERIES

STYLE: 5ANADK2-8006

SIZES: 7-11,12,13,14

CSA GRADE 1 STEEL TOE, COMPOSITE PLATE. ESR.

8" "8006" QUAD COMFORT STCP WORK BOOT

- Nubuck leather upper.
- Polyurethane DURATOE® guard.
- Breathable and moisture wicking Cambrelle lining with 200g T-MAX® insulation.
- Removable 4 density EVA footbed.
- Direct injected polyurethane midsole.
- TARANTULA® ANTI-SLIP rubber outsole, engineered to help prevent slips and falls.

EXCLUSIVELY AT

Mark's



DAKOTA

WORKPRO SERIES

STYLE: 5ANADK2-8529

SIZES: 7-12,13,14,15,16,17

CSA GRADE 1 STEEL TOE, STEEL PLATE. ESR.

8" "529" STSP WORK BOOT

- Full grain leather upper.
- DURATOE® "529" TPU exterior toecap.
- Moisture wicking and breathable DRI-TEC® lining with 200g T-MAX® insulation.
- QUAD COMFORT®, a better way to walk.
- Cushioning Rubberlon midsole.
- TARANTULA® ANTI-SLIP rubber outsole, engineered to help prevent slips and falls.



DAKOTA

WORKPRO SERIES

STYLE: 5ANADK9-8518

SIZES: 7-11,12, 13,14

CSA GRADE 1 STEEL TOE, STEEL PLATE. ESR.

8" "8518" STSP T-MAX® INSULATED WORK BOOT

- Nubuck leather upper.
- Polyurethane DURATOE® exterior toecap.
- Padded collar.
- DRI-TEC lining with FRESHTECH®.
- 200g T-MAX® insulation.
- Removable polyurethane foam footbed.
- Polyurethane midsole.
- TPU outsole.





DAKOTA

WORKPRO SERIES

STYLE: 5ANADK2-8529WP

SIZES: 7-11,12,13,14,15

CSA GRADE 1 STEEL TOE, STEEL PLATE. ESR.

8" "529" HD3 WATERPROOF STSP WORK BOOT

- Waterproof leather upper.
- HYPER-DRI® HD3 waterproof, breathable membrane.
- DURATOE® "529" TPU exterior toecap.
- Moisture wicking and breathable DRI-TEC® lining with 200g T-MAX® insulation.
- Cushioning Rubberlon midsole.
- QUAD COMFORT®, a better way to walk.
- TARANTULA® ANTI-SLIP rubber outsole, engineered to help prevent slips and falls.

EXCLUSIVELY AT

Mark's



DAKOTA

WORKPRO SERIES

STYLE: 5ANADK9-8517

SIZES: 7-11,12,13,14,15,16,17

CSA GRADE 1 STEEL TOE, COMPOSITE PLATE. ESR.

A classic leather work boot from Dakota. They support your feet with four comfort components addressing shock absorption, weight distribution, cushioning and pressure displacement. These men's work boots meet CSA Grade 1 requirements for toe and underfoot protection. They're also electric shock resistant. Bottomed out with Tarantula Anti-Slip® rubber outsoles, these boots provide the ultimate in slip protection by reducing the likelihood that you'll slip or fall on wet and/or greasy surfaces.

8" "8517" QUAD COMFORT® STCP WORK BOOT

- Full grain leather upper.
- FRESHTECH® treated lining.
- 200g T-MAX® insulation.
- QUAD COMFORT®, a better way to walk.
- Removable polyurethane footbed.
- Poured polyurethane welt midsole.
- TARANTULA® ANTI-SLIP rubber outsole, engineered to help prevent slips and falls.

EXCLUSIVELY AT

Mark's





DAKOTA WORKPRO SERIES

STYLE: 5ANADK9-8537

SIZES: 7-11,12,13,14

CSA GRADE 1 ALUMINUM TOE, COMPOSITE PLATE. ESR.

8" "8537" QUAD COMFORT® ATCP WORK BOOT

- Full grain leather upper with TPU/Kevlar® reinforced molded side quarter panels.
- Breathable lining with 200g T-MAX® insulation.
- Removable polyurethane footbed.
- QUAD COMFORT®, a better way to walk.
- Poured polyurethane welt midsole.
- TARANTULA® ANTI-SLIP rubber outsole, engineered to help prevent slips and falls.

EXCLUSIVELY AT
Mark's



DAKOTA WORKPRO SERIES

STYLE: 5ANADK1-8410

SIZES: 7-11,12,13,14,15

CSA GRADE 1 COMPOSITE TOE, COMPOSITE PLATE. ESR.

8" "8410" INJECTED CTCP WORK BOOT

- Full grain leather upper.
- Mesh lining with DRI-TEC®.
- 200g T-MAX® insulation.
- Removable polyurethane footbed.
- QUAD COMFORT®, a better way to walk.
- TARANTULA® ANTI-SLIP rubber outsole, engineered to help prevent slips and falls.
- DURATOE® Axis Asymmetrical toe guard.

EXCLUSIVELY AT
Mark's



DAKOTA WORKPRO SERIES

STYLE: 5ANADK9-8522

SIZES: 7-11,12,13,14

CSA GRADE 1 STEEL TOE, STEEL PLATE. ESR.

8" "8522" QUAD COMFORT® STSP WATERPROOF BOOT

- Waterproof full grain leather upper.
- HYPER-DRI® HD3 waterproof, breathable membrane.
- 200g T-MAX® insulation.
- Poured polyurethane welt midsole.
- Removable polyurethane footbed.
- QUAD COMFORT®, a better way to walk.
- TARANTULA® ANTI-SLIP rubber outsole, engineered to help prevent slips and falls.

EXCLUSIVELY AT
Mark's





DAKOTA

WORKPRO SERIES

STYLE: 5ANADK2-8610

SIZES: 7-11,12,13,14

CSA GRADE 1 STEEL TOE, COMPOSITE PLATE. ESR.

8" "X-TOE" STCP WORK BOOT

- Leather upper.
- QUAD COMFORT®, a better way to walk.
- 200g T-MAX® insulation.
- Removable polyurethane footbed.
- Poured polyurethane welt midsole.
- TARANTULA® ANTI-SLIP rubber outsole, engineered to help prevent slips and falls.

EXCLUSIVELY AT

Mark's



DAKOTA

WORKPRO SERIES

STYLE: 5ANADK0-8550

SIZES: 7-11,12,13,14

CSA GRADE 1 COMPOSITE TOE, STEEL PLATE. ESR.

8" "8550" CTSP WORK BOOT

- Full grain leather upper.
- DRI-TEC® lining with FRESHTECH®.
- 200g T-MAX® insulation.
- Removable polyurethane sponge footbed with an EVA midsole.
- QUAD COMFORT®, a better way to walk.
- TARANTULA® ANTI-SLIP rubber outsole, engineered to help prevent slips and falls.
- DURATOE® toe guard.

EXCLUSIVELY AT

Mark's



DAKOTA

WORKPRO SERIES

STYLE: 5ANADK9-8577

SIZES: 7-11,12,13,14,15

CSA GRADE 1 STEEL TOE, COMPOSITE PLATE. ESR.

8" "8557" STCP WATERPROOF BOOT

- Waterproof full grain leather upper.
- HYPER-DRI® HD3 waterproof, breathable membrane.
- 200g T-MAX® insulation.
- Textile lining with FRESHTECH®.
- QUAD COMFORT®, a better way to walk.
- Removable cushioning polyurethane footbed.
- Poured polyurethane midsole.
- VIBRAM® FIRE & ICE rubber outsole.

EXCLUSIVELY AT

Mark's





DAKOTA
WORKPRO SERIES

STYLE: 5ANADK3-8300

SIZES: 7-11,12,13,14

CSA GRADE 1 COMPOSITE TOE, COMPOSITE PLATE. ESR.

8" "8300" WATERPROOF CTCP WORK BOOT

NEW!

- Full grain leather upper.
- HYPER-DRI® HD3 waterproof membrane.
- Mesh lining with DRI-TEC®. 200g T-MAX® insulation.
- QUAD COMFORT®, a better way to walk.
- Removable polyurethane footbed.
- Internal polyurethane midsole with exterior TPU shell.
- TARANTULA® ANTI-SLIP rubber outsole, engineered to help prevent slips and falls.

EXCLUSIVELY AT
Mark's



DAKOTA
WORKPRO SERIES

STYLE: 5ANADK2-8611

SIZES: 7-11,12,13,14

CSA GRADE 1 STEEL TOE, COMPOSITE PLATE. ESR.

Made for general construction applications, these Dakota work boots have the protection of X-TOE® EXTERNAL SAFETY TOES that offer safety on the outside and more comfort inside. They feature T-MAX® INSULATION that keeps your feet warm and comfortable without overheating. They come with our QUAD COMFORT® cushioning and support and FRESHTECH® Odour protection technology for all day freshness. ICEFX® is our leading edge technology for advanced traction on ice. These full-feature safety boots meet CSA Grade 1 requirements with steel toes and composite plates.

8" WINTER "X-TOE" INSULATED STCP WORK BOOT

- Waterproof leather upper.
- HYPER-DRI® HD3 waterproof, breathable membrane.
- 600g T-MAX® insulation.
- QUAD COMFORT®, a better way to walk.
- EVA midsole, removable polyurethane footbed.
- ICEFX® ANTISLIP rubber outsole with GREEN DIAMOND® and ICELANDIC GRIP®.
- External steel safety toe.

EXCLUSIVELY AT
Mark's





DAKOTA
WORKPRO SERIES

STYLE: 5ANADK7-8510
SIZES: 7-11,12,13,14
CSA GRADE 1 COMPOSITE TOE, COMPOSITE PLATE. ESR.

8" VIBRAM ARCTIC GRIP "8510" CTCP WORK BOOT

- Full grain leather upper.
- Moisture wicking and breathable DRI-TEC® lining.
- QUAD COMFORT®, a better way to walk.
- 200g T-MAX® insulation.
- Removable EVA sponge footbed.
- Vibram® Arctic Grip Pro rubber outsole.
- TPU DURATOE® guard.

EXCLUSIVELY AT
Mark's



DAKOTA
WORKPRO SERIES

STYLE: 5ANADK8024B
SIZES: 7-11,12,13
CSA GRADE 1 STEEL TOE, STEEL PLATE. ESR.

8" "IRONWORKER" STSP UNLINED WORK BOOT

- Oiled full grain leather upper with lace to toe lacing system.
- Unlined.
- Removable triple density footbed.
- Wedge rubberlon outsole.
- Abrasion resistant toe guard.

EXCLUSIVELY AT
Mark's



DAKOTA
WORKPRO SERIES

STYLE: 5ANADK8-8523
SIZES: 7-11,12,13,14
CSA GRADE 1 STEEL TOE, STEEL PLATE. ESR.

8" "523" STSP INSULATED IRONWORKER BOOT

- Buffalo leather upper.
- Breathable and moisture wicking DRI-TEC® lining with FRESHTECH®.
- 200g T-MAX® insulation.
- Removable triple density footbed.
- Wedge rubberlon outsole.
- Abrasion resistant toe guard.

EXCLUSIVELY AT
Mark's





STYLE: HHS242003

SIZES: 7-11,12,13,14

CSA GRADE 1 ALUMINUM TOE, COMPOSITE PLATE. ESR.

8" ULTRALIGHT ATCP WORK BOOT

- Nylon upper with Polyurethane synthetic eyestay and heel counter.
- DRI-TEC® lining with FRESHTECH®.
- Removable PU sponge footbed.
- HELLYGRIP® rubber outsole.

EXCLUSIVELY AT

Mark's



STYLE: HHS232000

SIZES: 7-11,12,13,14

CSA GRADE 1 STEEL TOE, STEEL PLATE. ESR.

These tough leather work boots from Helly Hansen meet CSA Grade 1 standards with steel toes and plates. FRESHTECH® provides odour protection for all-day freshness. They provide good underfoot support with PU midsoles and rubber outsoles.

8" STSP WORK BOOT

- Leather upper.
- DRI-TEC® lining with FRESHTECH®.
- Poured polyurethane midsole.
- HELLYGRIP slip resistant rubber outsole.
- Removable polyurethane footbed.

EXCLUSIVELY AT

Mark's





STYLE: HHS242004

SIZES: 7-11,12,13,14

CSA GRADE 1 COMPOSITE TOE, COMPOSITE PLATE. ESR.

8" CTCP WORK BOOT

- Leather upper.
- HELLYTECH® WATERPROOF Performance waterproof membrane.
- DRI-TEC® lining with 200g T-MAX® insulation.
- Removable polyurethane sponge footbed.
- HELLYGRIP™ rubber outsole.

EXCLUSIVELY AT

Mark's



STYLE: HHF212005

SIZES: 7-11,12,13,14

CSA GRADE 1 ALUMINUM TOE, COMPOSITE PLATE. ESR.

8" ATCP HIGH ABRASION WATERPROOF WORK BOOT

- Lenzi textile upper.
- HELLYTECH® WATERPROOF Performance waterproof membrane.
- Breathable mesh lining with DRI-TEC®.
- 200g T-MAX® insulation.
- Removable polyurethane sponge footbed.
- HELLYGRIP™ rubber outsole.

EXCLUSIVELY AT

Mark's



STYLE: HHS202022

SIZES: 7-11,12,13,14

CSA GRADE 1 COMPOSITE TOE, COMPOSITE PLATE. ESR.

8" CTCP SAFETY WORK BOOT

- Full grain leather upper.
- HELLYTECH® WATERPROOF Performance waterproof membrane.
- Removable polyurethane footbed.
- TPU toe cap.
- Injected polyurethane midsole.
- HELLYGRIP™ rubber outsole.

EXCLUSIVELY AT

Mark's





STYLE: HHS212040

SIZES: 7-11,12,13,14

CSA GRADE 1 COMPOSITE TOE, COMPOSITE PLATE. ESR.

8" CTCP LEATHER WORK BOOT

- Waterproof leather upper.
- HELLYTECH® WATERPROOF Performance waterproof membrane.
- DRI-TEC® lining with FRESHTECH®.
- 200g T-MAX® insulation.
- Removable ETPU footbed.
- HELLYGRIP™ rubber outsole.

EXCLUSIVELY AT

Mark's



STYLE: HHF231104

SIZES: 7-11,12,13

CSA GRADE 1 COMPOSITE TOE, COMPOSITE PLATE. ESR.

These Helly Hansen comp-toe boots are made in waterproof leather for outdoor jobsites. They're well insulated for winter warmth and treated to prevent odour. ICEFX® technology uses the latest compounds, materials, and innovative tread designs to provide advanced traction on ice. These boots meet CSA Grade one standards for on-the-job foot protection.

8" CTCP ICEFX® WORK BOOT

- Full grain leather upper.
- HELLYTECH® WATERPROOF Performance waterproof membrane.
- DRI-TEC® lining.
- 600g T-MAX® insulation.
- Removable polyurethane footbed.
- Rubber outsole with ICEFX® & Green Diamond.

EXCLUSIVELY AT

Mark's





STYLE: TR0A4NQ9FWE

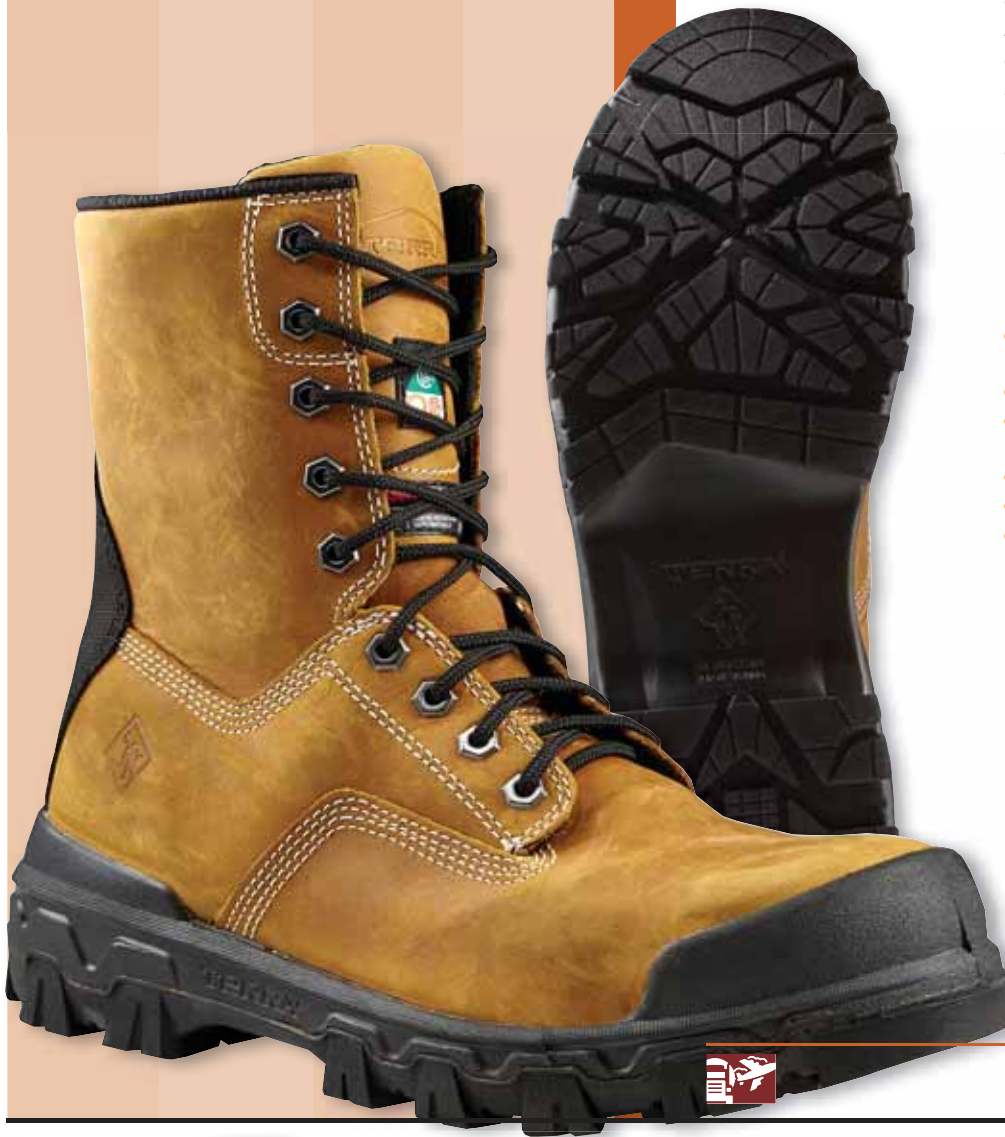
SIZES: 7-11,12,13,14,15

CSA GRADE 1 COMPOSITE TOE, COMPOSITE PLATE. ESR.

The newly restyled Terra Sentry work boot is now lighter with an aggressive outsole and a revised composite safety toe. Made in waterproof leather for variable work conditions, the boots are insulated and have moisture-wicking linings with odour control. Heavy-duty, slip-resistant outsoles help you keep your footing on slick surfaces.

8" "SENTRY 2020" CTCP WORK BOOT

- Full grain waterproof, seam sealed leather upper with bellows tongue.
- 200g Thinsulate™ insulation.
- Removable premium comfort polyurethane footbed.
- Polyurethane midsole.
- Slip resistant heavy duty TPU outsole.
- Abrasion resistant TECTUFF™ leather back strap.



KODIAK®

STYLE: 310090

SIZES: 7,8-11,12,13,14,15

CSA GRADE 1 ALUMINUM TOE, COMPOSITE PLATE. ESR.

8" "KODIAK BLUE PLUS" ATCP WORK BOOT

- Premium waterproof leather upper with sealed seams.
- Moisture wicking lining.
- Anatomical off-centre last.
- Triple stitched molded TPU toe and heel guard.
- Removable COMFORTZONE® dual density footbed.
- Polyurethane midsole.
- Slip and oil resistant rubber outsole.





KODIAK®

STYLE: KD0A4THHBLK

SIZES: 7-11,12,13,14,15

CSA GRADE 1 COMPOSITE TOE, COMPOSITE PLATE. ESR.

8" "QUEST BOUND" CTCP WORK BOOT

- Premium waterproof leather upper.
- Waterproof breathable membrane.
- Kodiak® SOS Smell Out Science® odour control technology.
- Comfortzone® footbed with Ortholite® comfort foam.
- EVA midsole.
- Oil, heat & slip resistant Vibram® TC4+ outsole.
- Molded TPU toe guard, heel and stability strap.



CAT

STYLE: P720211

SIZES: 7-11,12,13

CSA GRADE 1 COMPOSITE TOE, COMPOSITE PLATE. ESR.

8" "CONTROL" WATERPROOF CTCP WORK BOOT

- Full grain leather upper.
- Waterproof breathable membrane.
- 200g Thinsulate® insulation.
- Slip resistant rubber outsole.
- Removable EVA footbed.
- PVC welt midsole.



CAT

STYLE: P717629

SIZES: 7-11,12,13

CSA GRADE 1 COMPOSITE TOE, COMPOSITE PLATE. ESR.

8" "HAULER" WATERPROOF CTCP WORK BOOT

- Full grain leather upper.
- Waterproof breathable membrane.
- 200g Thinsulate® insulation.
- Breathable nylon mesh lining.
- Removable Nylex and polyurethane foam footbed.
- SRX slip resistant outsole compound with excellent traction and abrasion protection.
- TPU toe guard.





STYLE: TB0A12EZ214

SIZES: 7,8-11,12,13

CSA GRADE 1 ALUMINUM TOE, COMPOSITE PLATE. ESR.

8" "GRIDWORKS" ATCP WORK BOOT

- Premium waterproof leather upper.
- Waterproof breathable membrane.
- Mesh lining with antimicrobial treatment.
- All weather TPU outsole.
- Removable anti-fatigue foot bed.
- Lightweight, cushioning EVA midsole.



STYLE: TB0A1Q6Z001

SIZES: 7-11,12,13,14,15

CSA GRADE 1 COMPOSITE TOE, COMPOSITE PLATE. ESR.

8" "ENDURANCE HD" CTCP WORK BOOT

- Premium waterproof leather upper.
- Waterproof breathable membrane.
- Breathable mesh lining with antimicrobial treatment.
- 200g Thermolite® insulation.
- All weather TPU outsole.
- Removable anti-fatigue foot bed.
- Polyurethane midsole.



STYLE: TB0A1Q5U214

SIZES: 7-11,12,13,14,15

CSA GRADE 1 COMPOSITE TOE, COMPOSITE PLATE. ESR.

8" "ENDURANCE HD" CTCP WORK BOOT

- Premium waterproof leather upper.
- Waterproof breathable membrane.
- Breathable mesh lining with antimicrobial treatment.
- 200g Thermolite® insulation.
- All weather TPU outsole.
- Removable anti-fatigue foot bed.
- Polyurethane midsole.

EXCLUSIVELY AT

Mark's





STYLE: TB0A24AJ214-1
SIZES: 7-11,12,13,14,15
NON-SAFETY

SOFT TOE "TRUE GRIT" PULL ON WORK BOOT

NEW!

- Premium waterproof leather upper.
- Waterproof breathable membrane.
- Re-BOTL breathable, antimicrobial and moisture wicking lining.
- Removable anti-fatigue footbed.
- Polyurethane midsole.
- TPU outsole.
- NON-SAFETY



STYLE: TB0A5U6Y214
SIZES: 7-11,12,13,14,15
CSA GRADE 1 COMPOSITE TOE, COMPOSITE PLATE. ESR.

"TRUE GRIT" CTCP PULL ON WORK BOOT

NEW!

- Premium waterproof leather upper with Ever-guard™ vamp.
- Waterproof breathable membrane.
- Breathable moisture wicking lining with antimicrobial treatment..
- Removable anti-fatigue footbed.
- Polyurethane midsole.
- All weather TPU outsole.
- NON-SAFETY



STYLE: TB189645001
SIZES: 7-11,12,13,14,15
CSA GRADE 1 COMPOSITE TOE, COMPOSITE PLATE. ESR.

8" "BOONDOCK" CTCP WATERPROOF WORK BOOT

- Full grain waterproof leather upper.
- Breathable mesh lining.
- 200g Thermolite® insulation.
- Removable anti-fatigue foot bed.
- Polyurethane anti-fatigue midsole.
- VIBRAM® FIRE & ICE rubber outsole.
- Molded VIBRAM® rubber toe cap.





STYLE: TB1A1VYP001

SIZES: 7-11,12,13,14,15

CSA GRADE 1 ALUMINUM TOE, COMPOSITE PLATE. ESR.

8" "BOONDOCK" CTCP BALLISTIC WORK BOOT

- Durable nylon double weave upper.
- Mesh lining with 200g Thermolite® insulation.
- Removable anti-fatigue footbed.
- Polyurethane anti-fatigue midsole.
- VIBRAM® FIRE & ICE rubber outsole.
- Molded VIBRAM® rubber toe cap.



STYLE: TB1A28VR214

SIZES: 7-11,12,13,14,15

CSA GRADE 1 COMPOSITE TOE, COMPOSITE PLATE. ESR.

Made for general use and trades work, these premium leather boots feature a waterproof membrane to keep feet dry and a breathable. They're designed for an improved fit and good energy return. The work boots are finished with a Vibram Arctic Grip rubber outsole that provides superior grip on icy surfaces. The Vibram toe cap adds more protection on the front. When you need boots that combine comfort and safety, these deliver.

8" "BOONDOCK HD" CTCP WORK BOOT

- Premium waterproof leather upper.
- Waterproof breathable membrane.
- Breathable, moisture wicking lining.
- Removable Step Propel™ footbed.
- VIBRAM® Arctic Grip Pro rubber outsole.
- Molded VIBRAM® rubber toe.

EXCLUSIVELY AT

Mark's





STYLE: TB1A4499214

SIZES: 7-11,12,13,14,15

CSA GRADE 1 COMPOSITE TOE, COMPOSITE PLATE. ESR.

8" "BOONDOCK" PULL ON CTCP WORK BOOT

- Premium waterproof leather upper.
- Waterproof breathable membrane.
- Re-BOTL breathable, antimicrobial and moisture wicking lining.
- 200g Thermolite® insulation.
- Removable anti-fatigue technology footbed.
- Polyurethane midsole.
- VIBRAM® FIRE & ICE rubber outsole.
- Molded VIBRAM® rubber toe.



STYLE: CMR8939

SIZES: 8-11,12,13

CSA GRADE 1 COMPOSITE TOE, COMPOSITE PLATE. ESR.

8" "WORK FLEX" LEATHER CTCP WORK BOOT

- Full grain leather upper.
- Storm Defender® waterproof breathable membrane.
- Breathable lining.
- 400g 3M™ Thinsulate™ insulation.
- Polyurethane Ortholite® footbed.
- EVA midsole.
- Carhartt rubber Rugged Flex® outsole.
- Rubber toe guard.



STYLE: CMR1999

SIZES: 8-11,12,13

CSA GRADE 1 COMPOSITE TOE, COMPOSITE PLATE. ESR.

10" "FLEX MUD WELLINGTON" CTCP WORK BOOT

- Full grain leather upper.
- Storm Defender® waterproof breathable membrane.
- Breathable lining.
- 400g 3M™ Thinsulate™ insulation.
- Polyurethane Ortholite® footbed.
- EVA midsole.
- Carhartt rubber Rugged Flex® outsole.
- Rubber toe guard.





ROYER

STYLE: 6020VT

SIZES: 7-11,12,13,14

CSA GRADE 1 ALUMINUM TOE, COMPOSITE PLATE. ESR.

8" "VENTURA" CTCP LEATHER INSULATED WORK BOOT

- Leather upper.
- Breathable, moisture wicking TAIBRELLE® lining.
- 200g Thinsulate™ insulation.
- Removable polyurethane footbed.
- Polyurethane midsole.
- Oil resistant rubber outsole.
- Ultra-resistant TPU PARESHOK bumper toe.



ROYER

STYLE: 5700GTR

SIZES: 5,6-11,12,13,14,15,16

CSA GRADE 1 COMPOSITE TOE, COMPOSITE PLATE. ESR.

8" "AGILITY REBOOT" CTCP WORK BOOT

- Full grain leather upper with SHIELDTEX™ abrasion resistant fabric.
- Comfortable and breathable R-LITE™ footbed.
- Polyurethane midsole.
- Metal free.
- Rubber outsole.
- Ultra resistant TPU PARESHOK™ toe guard.



ROYER

STYLE: 5700GT

SIZES: 5,6-11,12,13,14,15,16

CSA GRADE 1 COMPOSITE TOE, COMPOSITE PLATE. ESR.

8" "AGILITY" LIGHTWEIGHT CTCP WORK BOOT

- Full grain leather upper with SHIELDTEX™ abrasion resistant fabric.
- Spacer mesh lining.
- Comfortable and breathable R-LITE™ footbed.
- Polyurethane midsole.
- Metal free.
- Oil resistant rubber outsole.
- Ultra resistant TPU PARESHOK™ toe guard.





ROYER

STYLE: 8600FLX
SIZES: 7-11,12,13,14

CSA GRADE 1 COMPOSITE TOE, COMPOSITE PLATE. ESR.

8" "FLEX" WATERPROOF CTCP LEATHER WORK BOOT

- Waterproof full grain leather upper with SHIELDTEX™ abrasion resistant fabric.
- AIRFLOW™ abrasion resistant fabric.
- Breathable, moisture wicking TAIBRELLE® lining.
- Removable polyurethane footbed.
- Polyurethane midsole.
- Oil resistant rubber outsole.
- TPU toe cap.



ROYER

STYLE: 10-8680
SIZES: 8-11,12,13

CSA GRADE 1 COMPOSITE TOE, COMPOSITE PLATE. ESR.

8" METAL FREE CTCP WORK BOOT

- Waterproof full grain leather upper with SHIELDTEX™ abrasion resistant fabric.
- AIRFLOW™ abrasion resistant fabric.
- Breathable, moisture wicking TAIBRELLE® lining.
- Lightweight polyurethane midsole.
- Rubber outsole.
- TPU toe cap.



KEEN

STYLE: 1026789
SIZES: 7-12,13,14,15

CSA GRADE 1 COMPOSITE TOE, COMPOSITE PLATE. ESR.

8" "ABITIBI II" WATERPROOF CTCP WORK BOOT

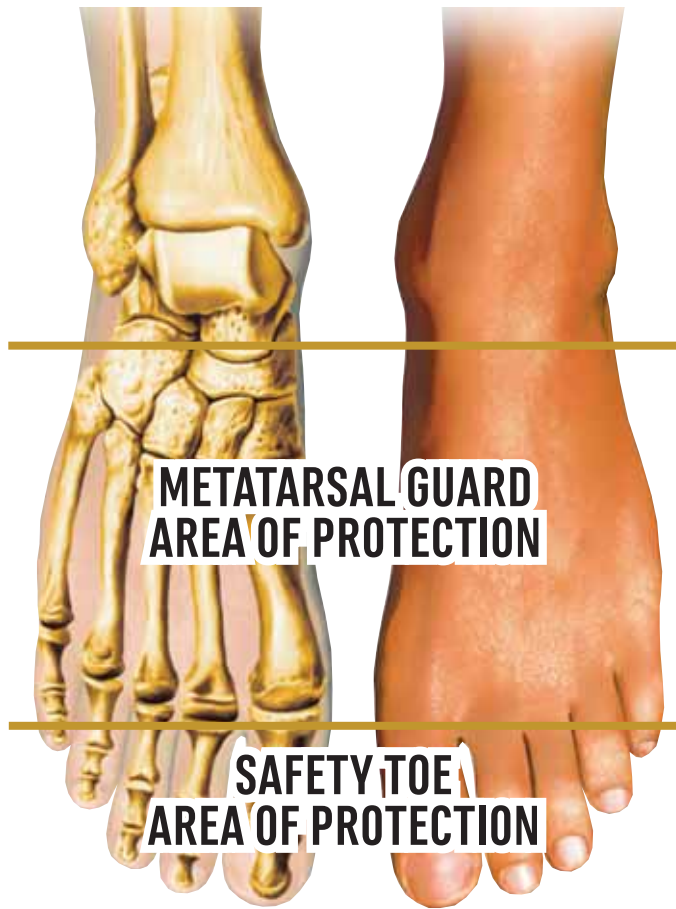
- Waterproof leather upper.
- KEEN.DRY® waterproof breathable membrane.
- Mesh and moisture wicking textile lining.
- Removable polyurethane footbed.
- Oil and slip resistant, non marking rubber outsole.





METATARSAL FOOTWEAR

WHY METATARSAL WORK BOOTS ARE SO IMPORTANT IN THE WORKPLACE.



Metatarsal is the name given to the five bones found in the middle of the foot that form the arch and connected to tissues, ligaments and tendons, providing movement in the foot. This area of the foot is vulnerable to falling objects as there is virtually no flesh, muscle or fat protecting these important bones which makes wearing boots with metatarsal guards so important.

Safety Toe Versus Metatarsal Work Boots

The safety toe will protect primarily the big toe and two to three toes leaving the rest of the foot back to the ankle area susceptible to injury. In this small unprotected area there is 26 bones, 33 joints, 107 ligaments, 19 muscles plus tendons and nerves which can be protected with the addition of a metatarsal guard in work boots.

Choosing A Metguard Boot

There are two types of metatarsal guards - external and internal. They both have to meet the same CSA Z195-14 and ASTM standards, using a specific impact test for metatarsal guards. A 50-pound weight in the shape of a 1 inch diameter bar is dropped eighteen inches onto the metatarsal area of the shoe, resulting in a 75 foot-pound impact to the metatarsal guard. A full 1-inch clearance must be maintained under the metatarsal impact area on the inside of the shoe. The results are clearly seen and measured from a soft wax foot-form, which was placed within the shoe before the test and removed afterward to measure the deflection of the guard during impact.

The Difference Between External and Internal Guards?

External metatarsal guards have the layer of protection on the outside of the footwear, like a turtle's shell. A protective material is usually attached to the toe of the shoe and extends upwards and covers the entire top of the foot. Internal metatarsal guards have the layer of flexible protection on the inside of the footwear offering more comfort. Both guard designs have been improved over the years to offer a high degree of protection with improved resilience and comfort.

Metatarsal boots are very necessary in many environments. It is important to remember that certain industries and companies have specific requirements, regarding which guard they prefer; however, advanced technology has made either option much safer, and more comfortable, in addition to being available in a myriad of styles.



DAKOTA

WORKPRO SERIES

STYLE: 5ANADK3-8112

SIZES: 7-11,12,13,14,15

CSA GRADE 1 STEEL TOE, COMPOSITE PLATE. ESR.

8" "QUAD COMFORT" STCP INTERNAL METGUARD

- Full grain leather upper with side zipper.
- Breathable, moisture wicking mesh lining with T-MAX® insulation.
- QUAD COMFORT®
- Injected polyurethane midsole.
- Removable quad density footbed.
- TARANTULA ANTISLIP® rubber outsole.

EXCLUSIVELY AT

Mark's



DAKOTA

WORKPRO SERIES

STYLE: 5ANADK2-8514

SIZES: 7-11,12,13,14,15

CSA GRADE 1 STEEL TOE, STEEL PLATE. ESR.

8" "8514" STSP EXTERNAL METGUARD WORK BOOT

- Full grain leather upper.
- Breathable, moisture wicking DRI-TEC lining.
- 200g T-MAX® insulation.
- QUAD COMFORT®.
- Poured polyurethane welt midsole.
- Removable polyurethane footbed.
- TARANTULA ANTISLIP® rubber outsole.
- External metatarsal protection.

EXCLUSIVELY AT

Mark's



STYLE: HHS222044

SIZES: 7-11,12,13,14

CSA GRADE 1 COMPOSITE TOE, COMPOSITE PLATE. ESR.

8" INTERNAL METGUARD CTCP WORK BOOT

- Waterproof full grain leather upper.
- HELLYTECH® WATERPROOF performance waterproof membrane.
- DRI-TEC lining with FRESHTECH®.
- 200g T-MAX® insulation.
- HELLYGRIP™ rubber outsole.
- Injected polyurethane midsole.
- Removable ETPU footbed.
- Internal metatarsal protection.





STYLE: 2988B

SIZES: 3-11,12,13,14

CSA GRADE 1 COMPOSITE TOE, COMPOSITE PLATE. ESR.

8" "PALADIN" CTCP INTERNAL METGUARD WORK BOOT

- Full grain waterproof sealed-seam leather upper with internal metguard.
- Lightweight polyurethane midsole.
- Moisture wicking Aerospace lining with 200g 3M™ Thinsulate™ insulation.
- ANTI-FOD high traction rubber outsole.
- TERRA FIRMA-FLEX™ – 100% Metal Free



STYLE: 1027693

SIZES: 7-12,13,14

CSA GRADE 1 COMPOSITE TOE, COMPOSITE PLATE. ESR.

8" "CAMDEN" CTCP INTERNAL METGUARD WORK BOOT

- Waterproof leather upper.
- KEEN.DRY® waterproof breathable membrane.
- Breathable mesh lining.
- Removable dual density polyurethane footbed.
- KEEN Luftcell: Air-infused, polyurethane midsole.
- Oil and slip resistant rubber outsole.
- Internal metatarsal protection.



STYLE: TB0A1WUT001

SIZES: 7-12,13,14,15

CSA GRADE 1 COMPOSITE TOE, COMPOSITE PLATE. ESR.

8" "ENDURANCE" CTCP INTERNAL METGUARD BOOT

- Premium waterproof leather upper.
- Waterproof breathable membrane.
- Antimicrobial treated mesh lining.
- Contoured single-density open-cell polyurethane footbed.
- Polyurethane anti-fatigue midsole.
- Timberland PRO® rubber outsole.
- Internal metatarsal protection.





6 INCH FOOTWEAR



AGGRESSOR

STYLE: 5ANBDK2-6500

SIZES: 7-11,12,13,14

CSA GRADE 1 STEEL TOE, STEEL PLATE. ESR.

6" STSP WORK BOOT

- Buffalo Nubuck leather upper.
- Breathable air mesh lining.
- Removable EVA footbed.
- Polyurethane toe guard.

EXCLUSIVELY AT

Mark's



DAKOTA

WORKPRO SERIES

STYLE: 5ANBDK6-6877

SIZES: 7-11,12,13,14

CSA GRADE 1 STEEL TOE, STEEL PLATE. ESR.

6" "877" STSP WORK BOOT

- Buffalo leather upper.
- Breathable air mesh lining with 200g T-MAX® insulation.
- QUAD COMFORT®, a better way to walk.
- Polyurethane injected midsole.
- Removable EVA footbed.
- TARANTULA ANTISLIP® rubber outsole.
- TPU DURATOE® toe guard.

EXCLUSIVELY AT

Mark's



DAKOTA

WORKPRO SERIES

STYLE: 5ANBDK2-6006

SIZES: 7-11,12,13,14

CSA GRADE 1 STEEL TOE, COMPOSITE PLATE. ESR.

6" "6006" QUAD COMFORT® STCP WORK BOOT

- Nubuck leather upper.
- Breathable and moisture wicking Cambrelle lining with 200g T-MAX® insulation.
- QUAD COMFORT®, a better way to walk.
- Removable 4 density EVA Ortholite® footbed.
- Direct injected polyurethane midsole.
- TARANTULA ANTISLIP® rubber outsole.

EXCLUSIVELY AT

Mark's





DAKOTA

WORKPRO SERIES

STYLE: 5ANBDK9-6518

SIZES: 7-11,12,13,14

CSA GRADE 1 STEEL TOE, STEEL PLATE. ESR.

6" "6518" STSP PU/TPU SAFETY WORK BOOT

- Nubuck leather upper.
- DRI-TEC lining with FRESHTECH®.
- 200g T-MAX® insulation.
- QUAD COMFORT®, a better way to walk.
- Removable polyurethane foam footbed.
- Polyurethane midsole.
- TPU outsole.

EXCLUSIVELY AT

Mark's



DAKOTA

WORKPRO SERIES

STYLE: 5ANBDK8-6002

SIZES: 7-11,12,13,14,15

CSA GRADE 1 STEEL TOE, STEEL PLATE. ESR.

6" "6002" STSP LEATHER WORK BOOT

- Full grain leather upper.
- Breathable lining with 200g T-MAX® insulation.
- QUAD COMFORT®, a better way to walk.
- Injected polyurethane midsole.
- Removable polyurethane footbed.
- TPU DURATOE® toe guard.
- TARANTULA ANTISLIP® rubber outsole.

EXCLUSIVELY AT

Mark's



DAKOTA

WORKPRO SERIES

STYLE: 5ANBDK9-6114

SIZES: 7-11,12,13,14,15,16,17

CSA GRADE 1 STEEL TOE, COMPOSITE PLATE. ESR.

6" "6114" QUAD COMFORT® STCP WORK BOOT

- Full grain leather upper.
- Lining with FRESHTECH®.
- 200g T-MAX® insulation.
- QUAD COMFORT®, a better way to walk.
- Poured polyurethane midsole.
- Multiple density removable polyurethane footbed.
- TARANTULA ANTISLIP® rubber outsole.

EXCLUSIVELY AT

Mark's





DAKOTA

WORKPRO SERIES

STYLE: 5ANBDK2-6100

SIZES: 7-11,12,13,14

CSA GRADE 1 ALUMINUM TOE, COMPOSITE PLATE. ESR.

6" PULL ON ATCP WORK BOOT

- Full grain leather upper.
- Breathable mesh lining.
- Removable polyurethane footbed.
- Polyurethane midsole.
- QUAD COMFORT®, a better way to walk.
- TARANTULA ANTISLIP® rubber outsole.

EXCLUSIVELY AT

Mark's



DAKOTA

WORKPRO SERIES

STYLE: 5ANBDK2-6101

SIZES: 7-11,12,13,14

CSA GRADE 1 ALUMINUM TOE, COMPOSITE PLATE. ESR.

This boot offers the best innovations, allowing you to be safe and comfortable on the worksite. Easy to wear and slip on with side gusset and pull-tab features. They support your feet with four comfort components addressing shock absorption, weight distribution, cushioning and pressure displacement. These boots meet CSA Grade 1 requirements for toe and underfoot protection paired with TARANTULA ANTISLIP® outsoles that deliver reliable traction

6" PULL ON ATCP WORK BOOT

- Full grain leather upper.
- Breathable mesh lining.
- Removable polyurethane footbed.
- Polyurethane midsole.
- QUAD COMFORT®, a better way to walk.
- TARANTULA ANTISLIP® rubber outsole.

EXCLUSIVELY AT

Mark's





DAKOTA

WORKPRO SERIES

STYLE: 5ANBDK1-6410

SIZES: 7-11,12,13,14,15

CSA GRADE 1 COMPOSITE TOE, COMPOSITE PLATE. ESR.

6" "6410" CTCP INJECTED WORK BOOT

- Full grain leather upper.
- Mesh lining with DRI-TEC®.
- 200g T-MAX® insulation.
- Removable polyurethane footbed.
- QUAD COMFORT®, a better way to walk.
- TARANTULA ANTISLIP® rubber outsole.
- DURATOE® Axis Asymmetrical toe guard.

EXCLUSIVELY AT

Mark's



DAKOTA

WORKPRO SERIES

STYLE: 5ANBDK2-6612

SIZES: 7-11,12,13,14

CSA GRADE 1 STEEL TOE, COMPOSITE PLATE. ESR.

Made for general construction applications, these Dakota work boots have the protection of X-TOE® EXTERNAL SAFETY TOES that offer safety on the outside and more comfort inside. They feature T-MAX® INSULATION that keeps your feet warm and comfortable without overheating. They come with our QUAD COMFORT® cushioning and support and FRESHTECH® Odour protection technology for all day freshness. These full-feature safety boots meet CSA Grade 1 requirements with steel toes and composite plates.

6" "X-TOE" STCP WORK BOOT

- Leather upper.
- QUAD COMFORT®, a better way to walk.
- Poured polyurethane welt midsole.
- 200g T-MAX® insulation.
- Removable polyurethane footbed.
- TARANTULA ANTISLIP® rubber outsole.

EXCLUSIVELY AT

Mark's





DAKOTA

WORKPRO SERIES

STYLE: 5ANBDK0-6550

SIZES: 7-11,12,13,14

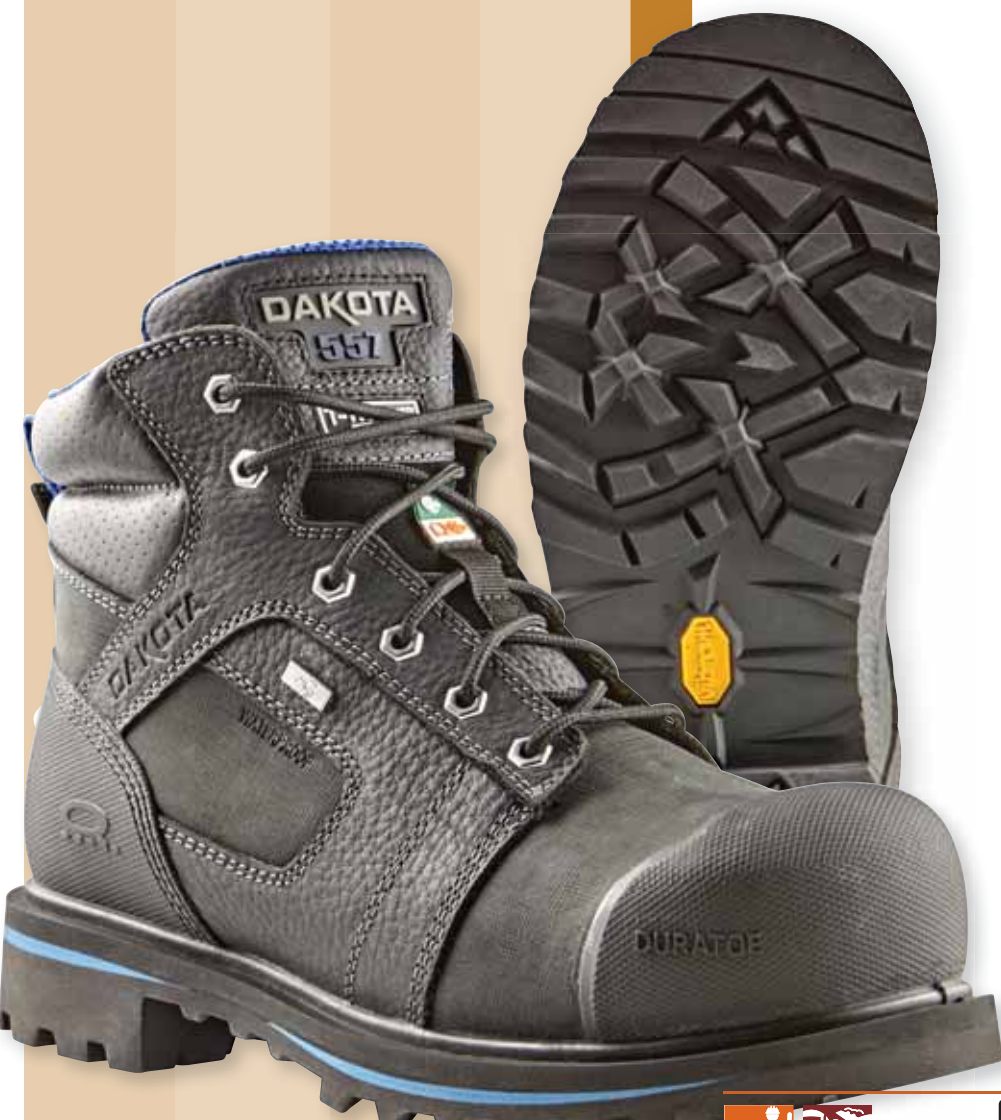
CSA GRADE 1 COMPOSITE TOE, COMPOSITE PLATE. ESR.

6" "6550" CTCP WORK BOOT

- Full grain leather upper.
- DRI-TEC lining with FRESHTECH®.
- 200g T-MAX® insulation.
- QUAD COMFORT®, a better way to walk.
- Removable polyurethane sponge footbed with an EVA midsole.
- TARANTULA ANTISLIP® rubber outsole with DURATOE® toe guard.

EXCLUSIVELY AT

Mark's



DAKOTA

WORKPRO SERIES

STYLE: 5ANBDK0-6557

SIZES: 7-11,12,13,14,15

CSA GRADE 1 STEEL TOE, COMPOSITE PLATE. ESR.

Fully equipped for work on outdoor, cold weather job sites, our Dakota 557 work boots are waterproof, insulated and treated to inhibit the growth of fungi, mold and mildew. With Vibram Fire & Ice rubber outsoles, they are suitable for use in any outdoor activity where fire resistance and high grip performance have to be maintained in very cold weather conditions. They have steel toes and composite plates - toes feature exterior toe caps for added protection against wear.

6" "6557" STCP WORK BOOT

- Waterproof full grain leather upper.
- HYPER-DRI® HD3 waterproof, breathable membrane.
- 200g T-MAX® insulation, textile lining with FRESHTECH®.
- QUAD COMFORT®, a better way to walk.
- Removable polyurethane footbed.
- Poured polyurethane midsole.
- VIBRAM® FIRE & ICE rubber outsole.

EXCLUSIVELY AT

Mark's





DAKOTA

WORKPRO SERIES

STYLE: 5ANBDK9-6516

SIZES: 7-11,12,13,14

CSA GRADE 1 COMPOSITE TOE, COMPOSITE PLATE. ESR.

6" "6516" HD3 CTCP SAFETY WORK BOOT

- Waterproof leather upper.
- HYPER-DRI® HD3 waterproof, breathable membrane.
- 200g T-MAX® insulation, textile lining with FRESHTECH®.
- Removable ETPU footbed.
- QUAD COMFORT®, a better way to walk.
- TARANTULA ANTISLIP® rubber outsole.

EXCLUSIVELY AT

Mark's



DAKOTA

WORKPRO SERIES

STYLE: 5ANBDK3-6300

SIZES: 7-11,12,13,14

CSA GRADE 1 COMPOSITE TOE, COMPOSITE PLATE. ESR.

6" "6300" WATERPROOF CTCP WORK BOOT

- Full grain leather upper.
- HYPER-DRI® HD3 waterproof membrane.
- Mesh lining with DRI-TEC®.
- 200g T-MAX® insulation.
- Internal polyurethane midsole with exterior TPU shell.
- Removable polyurethane footbed.
- QUAD COMFORT®, a better way to walk.
- TARANTULA ANTISLIP® rubber outsole.

NEW!

EXCLUSIVELY AT

Mark's



DAKOTA

WORKPRO SERIES

STYLE: 5ANBDK3-6611

SIZES: 7-11,12,13,14

CSA GRADE 1 STEEL TOE, COMPOSITE PLATE. ESR.

6" ICEFX® X-TOE® STCP WORK BOOT

- Waterproof leather upper.
- HYPER-DRI® HD3 waterproof membrane.
- Breathable lining with 600g T-MAX® insulation.
- QUAD COMFORT®, a better way to walk.
- Removable polyurethane footbed.
- ICEFX® rubber outsole with Green Diamond and Icelandic grip.

NEW!

EXCLUSIVELY AT

Mark's





STYLE: HHS243001

SIZES: 7-11,12,13,14

CSA GRADE 1 ALUMINUM TOE, COMPOSITE PLATE. ESR.

6" ULTRALIGHT ATCP WORK BOOT

- Nylon upper with PU synthetic eyestay and heel counter.
- Breathable, moisture wicking DRI-TEC® lining with FRESHTECH®.
- Removable polyurethane sponge footbed.
- HELLYGRIP® rubber outsole.

EXCLUSIVELY AT

Mark's



STYLE: HHS232001

SIZES: 7-11,12,13,14

CSA GRADE 1 STEEL TOE, STEEL PLATE. ESR.

From Helly Hansen Workwear, these mid-height work boots offer comfort and freshness when you're working on your feet all day. Safety features include steel toes and plates that meet CSA Grade 1 standards for toe protection, puncture resistance and electric shock resistance.

6" STSP WORK BOOT

- Waterproof leather upper.
- DRI-TEC® lining with FRESHTECH®.
- Poured polyurethane midsole.
- HELLYGRIP® slip resistant rubber outsole.
- Removable polyurethane footbed.

EXCLUSIVELY AT

Mark's





STYLE: HHS202026

SIZES: 7-11,12,13,14

CSA GRADE 1 COMPOSITE TOE, COMPOSITE PLATE. ESR.

6" CTCP WORK BOOT

- Full grain leather upper.
- HELLYTECH® WATERPROOF Performance.
- Removable polyurethane footbed.
- TPU toe cap.
- Injected polyurethane midsole.
- HELLYGRIP® rubber outsole.

EXCLUSIVELY AT

Mark's



STYLE: HHS212042

SIZES: 7-11,12,13,14

CSA GRADE 1 COMPOSITE TOE, COMPOSITE PLATE. ESR.

A tough work boot from Helly Hansen Workwear, it's made in genuine leather and features Helly Tech waterproof, windproof and breathable technology. The removable ETPU insoles provide great comfort and support, while T-MAX® insulation keeps your feet warm in chilly workplaces. Anti slip rubber outsoles with Helly Grip provide excellent traction in all environments. Safety requirements include composite toes and non-metallic puncture-resistant composite plates.

6" CTCP LEATHER WORK BOOT

- Waterproof leather upper.
- HELLYTECH® WATERPROOF Performance.
- DRI-TEC lining with FRESHTECH®.
- 200g T-MAX® insulation.
- Removable ETPU footbed.
- HELLYGRIP® rubber outsole.

EXCLUSIVELY AT

Mark's





TERRA

STYLE: TR0A4NRFBLK

SIZES: 7-11,12,13,14

CSA GRADE 1 COMPOSITE TOE, COMPOSITE PLATE. ESR.

6" "MURPHY" SLIP-ON CTCP WORK BOOT

- Full grain leather upper with elastic gore panels.
- Moisture wicking and abrasion resistant lining.
- CLEANFeet® odor management technology.
- Removable polyurethane footbed.
- Slip, heat and acid resistant TPU outsole.
- METAL FREE.



CAT

STYLE: P720204

SIZES: 7-11,12,13

CSA GRADE 1 COMPOSITE TOE, COMPOSITE PLATE. ESR.

Constructed with full grain waterproof leather uppers and waterproof membranes, they offer protection during wet weather and moisture-prone work sites. The EVA insoles are removable in favour of orthotics and 200gr Thinsulate insulation provides lightweight warmth. Added safety is ensured with slip-resistant rubber outsoles, composition toes and plates, and CSA Omega electric shock resistance. These lace-up workboots include quick-tie clasps on the upper portion and rear pull tabs for easy on-off

6" "CONTROL" WATERPROOF CTCP WORK BOOT

- Full grain leather upper.
- Waterproof breathable membrane.
- 200g T-MAX® insulation.
- Slip resistant rubber outsole.
- Removable EVA footbed.
- PVC welt midsole.





STYLE: P724582

SIZES: 7-11,12,13

CSA GRADE 1 COMPOSITE TOE, COMPOSITE PLATE. ESR.

6" "EXCAVATOR SUPERLITE" WATERPROOF CTCP WORK BOOT

- Nubuck leather upper.
- Waterproof breathable membrane.
- Breathable nylon mesh lining.
- 200g Thinsulate™ insulation.
- Cushioning polyurethane midsole.
- SRX slip resistant outsole compound with excellent traction and abrasion protection.
- Durable TPU toe guard.



STYLE: P717627

SIZES: 7-11,12,13

CSA GRADE 1 COMPOSITE TOE, COMPOSITE PLATE. ESR.

6" "HAULER" WATERPROOF CTCP WORK BOOT

- Full grain leather upper.
- Waterproof breathable membrane.
- Breathable nylon mesh lining.
- 200g Thinsulate™ insulation.
- Removable Nylex & polyurethane foam footbed.
- Slip and abrasion resistant deep cleated rubber outsole.
- Durable TPU toe guard.



STYLE: TB0A5NFT214

SIZES: 7-11,12,13,14,15

CSA GRADE 1 ALLOY TOE, STEEL PLATE. ESR.

6" "IRVINE WEDGE" ATSP WORK BOOT

- Premium full grain leather upper.
- Re-BOTL breathable, antimicrobial and moisture wicking lining.
- Removable anti-fatigue polyurethane footbed.
- EVA midsole.
- Timberland PRO® rubber outsole.

EXCLUSIVELY AT

Mark's





STYLE: TB0A5SXH214
SIZES: 7-11,12,13,14,15
NON-SAFETY.

6" SOFT TOE WEDGE WORK BOOT

- Premium full grain leather upper.
- Breathable lining with anti-microbial treatment.
- Removable polyurethane footbed.
- EVA midsole.
- Rubber outsole.

NEW!



STYLE: TB0A5M2T214
SIZES: 7-11,12,13,14,15
NON-SAFETY.

6" "TITAN EV" SOFT TOE WORK BOOT

- Premium full grain leather upper.
- Waterproof breathable membrane.
- Re-BOTL breathable, antimicrobial and moisture wicking lining.
- Removable anti-fatigue polyurethane footbed.
- Lightweight Hover Spring™ foam midsole.
- Rubber outsole.

NEW!



STYLE: TB0A22H2231
SIZES: 7-11,12,13,14,15
CSA GRADE 1 ALLOY TOE, STEEL PLATE. ESR.

6" "ICONIC" WATERPROOF ATSP WORK BOOT

- Premium waterproof leather upper.
- Waterproof breathable membrane.
- Breathable mesh lining with antimicrobial treatment.
- Removable anti-fatigue polyurethane footbed.
- Polyurethane midsole.
- Timberland PRO® rubber outsole.





STYLE: TB0A1Q6R001

SIZES: 7-11,12,13,14,15

CSA GRADE 1 COMPOSITE TOE, COMPOSITE PLATE. ESR.

6" "ENDURANCE HD" CTCP WORK BOOT

- Premium waterproof leather upper.
- Waterproof, breathable membrane.
- 200g Thermolite® insulation.
- Breathable mesh lining with antimicrobial treatment.
- TimberlandPRO® all-weather TPU outsole.
- Removable anti-fatigue footbed, polyurethane midsole.

EXCLUSIVELY AT

Mark's



STYLE: 91631

SIZES: 7-11,12,13,14,15

CSA GRADE 1 COMPOSITE TOE, COMPOSITE PLATE. ESR.

6" "BOONDOCK" CTCP WATERPROOF WORK BOOT

- Premium waterproof leather upper.
- Waterproof, breathable membrane.
- Breathable mesh lining with antimicrobial treatment.
- TimberlandPRO® all-weather TPU outsole.
- Removable anti-fatigue footbed, polyurethane midsole.
- Rubber toe cap.



STYLE: 1023250

SIZES: 7-12,13,14,15

CSA GRADE 1 ALUMINUM TOE, COMPOSITE PLATE. ESR.

6" "SAN JOSE" ATCP WORK BOOT

- Waterproof leather upper.
- KEEN.DRY® waterproof breathable membrane.
- Moisture wicking textile lining.
- Removable metatomical polyurethane footbed.
- KEEN Luftcell: Air-infused, polyurethane midsole.
- Oil and slip resistant non-marking rubber outsole.



carhartt

STYLE: CMR6971

SIZES: 8-12,13,14,15

CSA GRADE 1 COMPOSITE TOE, COMPOSITE PLATE. ESR.

A tough general purpose boot from Carhartt, this waterproof style features durable oil-tanned leather uppers, protected with rubber toe and heel bumpers. For added warmth, these boots feature lightweight Thinsulate™ insulation, while heavy-lugged rubber outsoles provide good grip on a variety of surfaces.

6" LEATHER RUGGED FLEX CTCP WORK BOOT

- Full grain leather upper.
- Storm Defender® waterproof, breathable membrane.
- Polyurethane Ortholite® footbed.
- EVA midsole.
- Carhartt rubber Rugged Flex® outsole.
- Abrasion resistant rubber toe and heel bumpers.



ROYER

STYLE: 10-8480

SIZES: 5,6,7-11,12,13,14,15

CSA GRADE 1 COMPOSITE TOE, COMPOSITE PLATE. ESR.

6" METAL FREE CTCP WORK BOOT

- Waterproof full grain leather upper with SHIELDTEX™ abrasion resistant fabric.
- Waterproof, breathable membrane.
- Breathable, moisture wicking TAIBRELLE® lining.
- Removable polyurethane footbed.
- Lightweight, flexible FLX™ rubber outsole.
- Metal Free.





STYLE: 163-01
SIZES: 6-12,13,14

CSA GRADE 1 COMPOSITE TOE, COMPOSITE PLATE. ESR.

6" LEATHER PULL-ON CTCP WORK BOOT

- CSA Grade 1 protective toe cap.
- Weatherproof leather is an industry-leading 2.5 mm thick, yet 'breathes' for absolute comfort.
- Dual-density polyurethane midsole and thermo-polyurethane (TPU) outsole: weatherproof, durable, lightweight and provides reliable certified traction.
- XRD® footbed for all-day comfort and support.
- Puncture resistant mid-soles by Lenzi: lighter, safer, more flexible, more comfortable and warmer than steel.
- Injection molded soles -no adhesives to come unglued, no stitching to rot.
- Heat, slip, oil, acid and electric shock-resistant sole.
- Comfort EVA removable footbed with XRD® in the heel pad.



ONLY AVAILABLE ONLINE AT:
MARKSCOMMERCIAL.COM



STYLE: 168-01
SIZES: 6-12,13,14

CSA GRADE 1 COMPOSITE TOE, COMPOSITE PLATE. ESR.

6" LEATHER PULL-ON CTCP WORK BOOT

- CSA Grade 1 protective toe cap.
- Weatherproof leather is an industry-leading 2.5 mm thick, yet 'breathes' for absolute comfort.
- Dual-density polyurethane midsole and thermo-polyurethane (TPU) outsole: weatherproof, durable, lightweight and provides reliable certified traction.
- XRD® footbed for all-day comfort and support.
- Puncture resistant mid-soles by Lenzi: lighter, safer, more flexible, more comfortable and warmer than steel.
- Injection molded soles -no adhesives to come unglued, no stitching to rot.
- Heat, slip, oil, acid and electric shock-resistant sole.
- Comfort EVA removable footbed with XRD® in the heel pad.



ONLY AVAILABLE ONLINE AT:
MARKSCOMMERCIAL.COM



STYLE: 180-01
SIZES: 6-12,13,14

CSA GRADE 1 COMPOSITE TOE, COMPOSITE PLATE. ESR.

6" LEATHER PULL-ON CTCP WORK BOOT

- CSA Grade 1 protective toe cap.
- Weatherproof leather is an industry-leading 2.5 mm thick, yet 'breathes' for absolute comfort.
- Dual-density polyurethane midsole and thermo-polyurethane (TPU) outsole: flexible, lightweight and durable.
- XRD® footbed for all-day comfort and support.
- Injection molded soles -- no adhesives to come unglued, no stitching to rot.
- Heat, slip, oil, acid and electric shock-resistant sole.
- Heat-formed heel for a snug fit.



ONLY AVAILABLE ONLINE AT:
MARKSCOMMERCIAL.COM





STYLE: 968-01

SIZES: 6-12,13,14,15

CSA GRADE 1 COMPOSITE TOE, COMPOSITE PLATE. ESR.

6" LEATHER PULL-ON CTCP WORK BOOT

- Slip-resistant rubber outsole. CSA approved grade 1 protective toe cap.
- Highly resistant to hydrolysis and microbial attack.
- Heat resistant to 300 °C.
- Oil, acid and organic fat resistant sole. Molded TPU toe guard.
- Premium weatherproof leather upper and elastic sided boot.
- Luxury removable Comfort Arch footbed with XRD® Technology for greater impact absorption and cushioning support for all-day comfort. Footbed is anti-bacterial, washable and breathable.
- Nylon shank ensures correct step flex point, assists with torsional stability.
- Extreme puncture protection that is metal-free and lightweight.



ONLY AVAILABLE ONLINE AT:
MARKSCOMMERCIAL.COM



STYLE: 960-02

SIZES: 7-12,13,14,15,16

CSA GRADE 1 STEEL TOE, STEEL PLATE. ESR.

Blundstone CSA-Approved 960 Work & Safety XFR in Wheat stands on a thicker, solid rubber lug sole for safe, long-wearing, comfort and stability. This unisex Blundstone Work and Safety boot has Comfort Arch footbeds reduce stress on bones and joints, cushioning heel-strike impact by up to 90%. Tough-as-nails rubber toe caps protect the boot itself and extend service life. Step up to comfort and safety that won't let you down.

6" LEATHER PULL-ON CTCP WORK BOOT

- Rubber outsole provides slip-resistance through a combination of design, tread pattern and sole material.
- Highly resistant to hydrolysis and microbial attack.
- Heat resistant to 300 °C.
- Oil, acid and organic fat resistant sole.
- Premium weatherproof leather upper and elastic sided boot.
- Molded TPU toe guard for added protection.
- Luxury removable Comfort Arch footbed with XRD® Technology for greater impact absorption and cushioning support for all-day comfort.
- Footbed is anti-bacterial, washable and breathable.
- Nylon shank ensures correct step flex point, assists with torsional stability.
- Extreme puncture protection that is metal-free, lightweight and flexible offering optimum penetration resistance
- Electrical shock resistant sole.
- CSA approved grade 1 protective toe cap.



ONLY AVAILABLE ONLINE AT:
MARKSCOMMERCIAL.COM





HIKER

FOOTWEAR



AGGRESSOR

STYLE: 5ANCAG9-2000
SIZES: 7-11,12,13,14
CSA GRADE 1 STEEL TOE, STEEL PLATE. ESR.

LOW-CUT STSP SAFETY HIKING SHOE

- Polyurethane mesh upper.
- Mesh lining.
- EVA midsole.
- Removable polyurethane footbed.
- Rubber outsole.

EXCLUSIVELY AT
Mark's



AGGRESSOR

STYLE: 5ANCAG9-2300
SIZES: 7-11,12,13,14
CSA GRADE 1 STEEL TOE, STEEL PLATE. ESR.

MID-CUT STSP SAFETY HIKING SHOE

- Polyurethane mesh upper.
- Mesh lining.
- EVA midsole.
- Removable polyurethane footbed.
- Rubber outsole.

EXCLUSIVELY AT
Mark's



DAKOTA
WORKPRO SERIES

STYLE: 5ANCDK0-2302
SIZES: 7-11,12,13,14
CSA GRADE 1 ALUMINUM TOE, COMPOSITE PLATE. ESR.

LOW-CUT QUAD COMFORT[®] ATCP SAFETY YARD SHOE

- Open air mesh and polyurethane upper.
- Breathable mesh lining.
- QUAD COMFORT[®], a better way to walk.
- Cushioning EVA midsole.
- Removable footbed.
- TARANTULA ANTISLIP[®] rubber outsole.

EXCLUSIVELY AT
Mark's





DAKOTA

WORKPRO SERIES

STYLE: 26039MDQC-AS

SIZES: 7-11,12,13,14

CSA GRADE 1 STEEL TOE, STEEL PLATE. ESR.

MID-CUT APPROACH STSP SAFETY HIKER

- Polyurethane Nubuck and nylon mesh upper.
- Breathable PK mesh and foam lining.
- QUAD COMFORT®, a better way to walk.
- Cushioning EVA midsole.
- TARANTULA ANTISLIP® rubber outsole.

EXCLUSIVELY AT

Mark's



DAKOTA

WORKPRO SERIES

STYLE: 5ANCDK8-2127

SIZES: 7-11,12,13,14

CSA GRADE 1 STEEL TOE, STEEL PLATE. ESR.

MID-CUT WATERPROOF STSP SAFETY HIKER

- Synthetic and mesh upper.
- HYPER-DRI® HD3 waterproof, breathable membrane.
- Breathable mesh lining.
- QUAD COMFORT®, a better way to walk.
- Extra EVA heel pod to give added comfort.
- TARANTULA ANTISLIP® rubber outsole.

EXCLUSIVELY AT

Mark's



DAKOTA

WORKPRO SERIES

STYLE: 5ANCDK0-2301

SIZES: 7-11,12,13,14

CSA GRADE 1 ALUMINUM TOE, COMPOSITE PLATE. ESR.

MID-CUT QUAD COMFORT® ATCP SAFETY YARD SHOE

- Waterproof Buffalo leather upper.
- HYPER-DRI® HD3 waterproof, breathable membrane.
- Breathable mesh lining.
- QUAD COMFORT®, a better way to walk.
- Cushioning EVA midsole.
- Removable footbed.
- TARANTULA ANTISLIP® rubber outsole.

EXCLUSIVELY AT

Mark's





DAKOTA

WORKPRO SERIES

STYLE: 5ANCDK2-2410

SIZES: 7-11,12,13,14,15

CSA GRADE 1 COMPOSITE TOE, COMPOSITE PLATE. ESR.

HIGH ABRASION LOW-CUT CTCP SAFETY HIKER

- High abrasion textile upper.
- Mesh lining.
- QUAD COMFORT®, a better way to walk.
- EVA midsole.
- Removable polyurethane footbed.
- TARANTULA ANTISLIP® rubber outsole.

EXCLUSIVELY AT

Mark's



DAKOTA

WORKPRO SERIES

STYLE: 5ANCDK2-2411

SIZES: 7-11,12,13,14,15

CSA GRADE 1 COMPOSITE TOE, COMPOSITE PLATE. ESR.

HIGH ABRASION MID-CUT CTCP SAFETY HIKER

- High abrasion textile upper.
- Mesh lining.
- QUAD COMFORT®, a better way to walk.
- EVA midsole.
- Removable polyurethane footbed.
- TARANTULA ANTISLIP® rubber outsole.

EXCLUSIVELY AT

Mark's



DAKOTA

WORKPRO SERIES

STYLE: 5ANCDK5-2120

SIZES: 7-11,12,13,14

CSA GRADE 1 COMPOSITE TOE, COMPOSITE PLATE. ESR.

HD3 LEATHER STCP SAFETY HIKER

- Waterproof leather upper.
- HYPER-DRI® HD3 waterproof, breathable membrane.
- Breathable, moisture wicking DRI-TEC lining.
- QUAD COMFORT®, a better way to walk.
- Cushioning polyurethane midsole.
- Removable EVA footbed.
- TARANTULA ANTISLIP® rubber outsole.

EXCLUSIVELY AT

Mark's





STYLE: HHS231006

SIZES: 7-11,12,13,14

CSA GRADE 1 ALUMINUM TOE, COMPOSITE PLATE. ESR.

LOW-CUT ATCP SAFETY HIKER

- Durable Polyester mesh upper with re-enforced eyestay.
- Breathable mesh lining with FRESHTECH®.
- Removable Ortholite® footbed.
- HELLYGRIP® rubber outsole.

EXCLUSIVELY AT

Mark's



STYLE: HHS231007

SIZES: 7-11,12,13,14

CSA GRADE 1 ALUMINUM TOE, COMPOSITE PLATE. ESR.

MID-CUT ATCP SAFETY HIKER

- Durable Polyester mesh upper with re-enforced eyestay.
- Breathable mesh lining with FRESHTECH®.
- Removable Ortholite® footbed.
- HELLYGRIP® rubber outsole.

EXCLUSIVELY AT

Mark's



STYLE: HHS211005

SIZES: 7-11,12,13

CSA GRADE 1 COMPOSITE TOE, COMPOSITE PLATE. ESR.

WATERPROOF CTCP LEATHER HIKER

- Waterproof full grain leather upper.
- HELLYTECH® WATERPROOF Performance waterproof membrane.
- Moisture wicking Air mesh lining.
- EVA midsole.
- Removable comfort footbed.
- HELLYGRIP® rubber outsole.

EXCLUSIVELY AT

Mark's



KODIAK®

STYLE: 302123

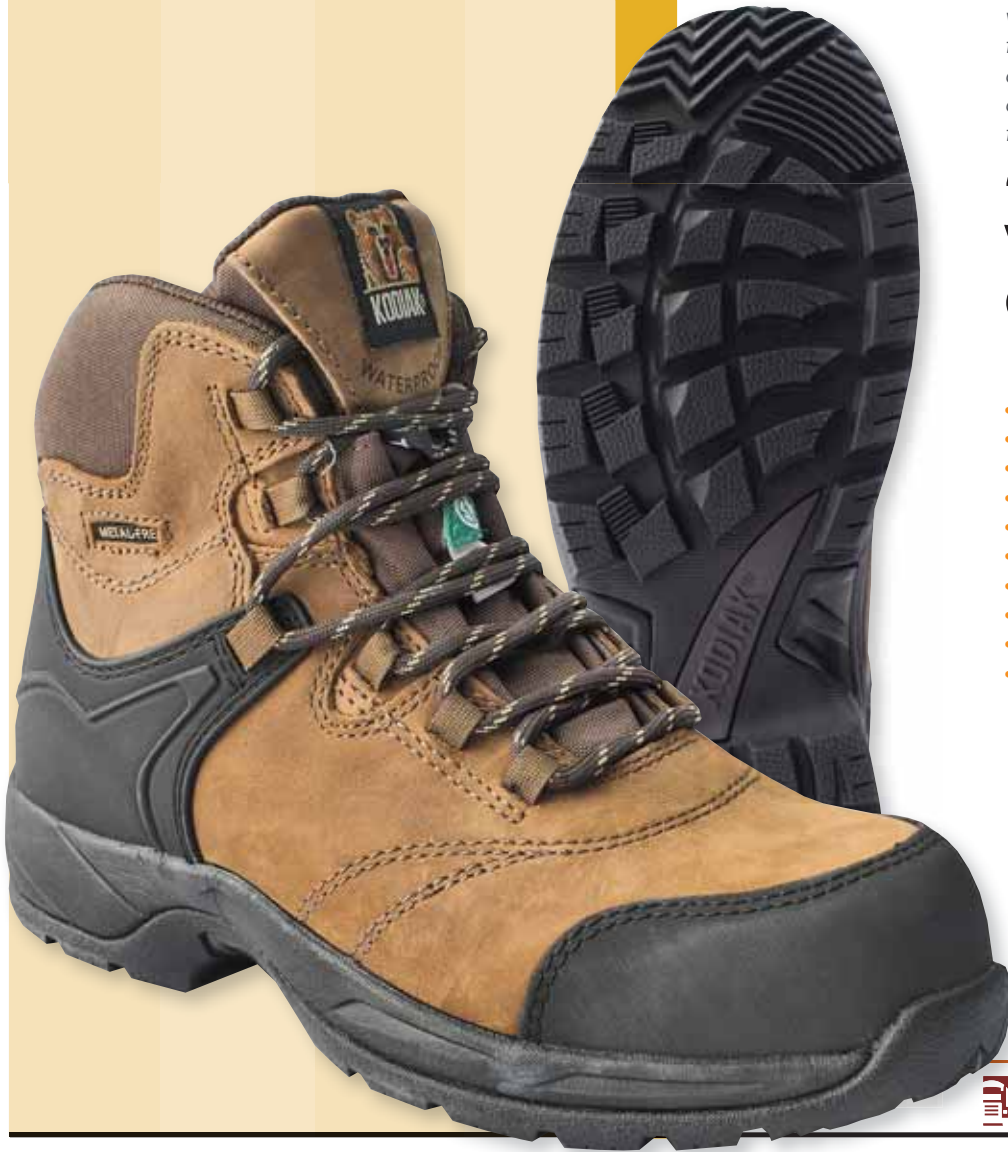
SIZES: 7-11,12,13,14

CSA GRADE 1 COMPOSITE TOE, COMPOSITE PLATE. ESR.

Ideal for equipment operators and trades workers, these Kodiak leather hiker-style boots feature waterproof membranes and Thinsulate™ insulation to keep feet dry and warm. Comp toes and plates are CSA Grade 1 compliant, while rubber toe guards and TPU heel counters offer additional protection to the boots.

“JOURNEY” WATERPROOF CTCP SAFETY HIKER

- Waterproof leather upper.
- Waterproof breathable membrane.
- Breathable Nylon mesh lining.
- 200g Thinsulate™ insulation.
- Removable EVA footbed.
- EVA midsole.
- Slip and oil resistant rubber outsole.
- TPU heel guard.
- Rubber toe guard.
- METAL FREE.



KODIAK®

STYLE: KD0A4TELA62

SIZES: 7-11,12,13,14,15

CSA GRADE 1 COMPOSITE TOE, COMPOSITE PLATE. ESR.

“QUEST BOUND” WATERPROOF CTCP MID CUT SAFETY HIKER

- Premium waterproof leather upper.
- Waterproof breathable membrane.
- Kodiak SOS Smell Out Science® odor control technology.
- Comfortzone® footbed with Ortholite® comfort foam.
- EVA midsole.
- VIBRAM® slip and oil resistant rubber outsole.
- TPU molded toe wrap.





STYLE: P725173

SIZES: 7-12,13

CSA GRADE 1 STEEL TOE, STEEL PLATE. ESR.

“ACCOMPLICE” WATERPROOF STSP SAFETY HIKER

- Full grain waterproof leather upper.
- Waterproof breathable membrane.
- Breathable Nylon mesh lining.
- Removable EVA footbed.
- Slip resistant rubber outsole.



STYLE: P720996

SIZES: 7-11,12,13

CSA GRADE 1 STEEL TOE, STEEL PLATE. ESR.

Equipped with steel toes and plates, these Caterpillar Outline safety boots are made of full grain leather with tough rubber outsoles. They have padded collars for comfort around the ankles and breathable mesh linings to keep your feet dry. These men's work boots feature supportive rubber midsoles, removable insoles and a quick and easy lacing system.

“OUTLINE” STSP LEATHER HIKER

- Full grain leather upper.
- Breathable Nylon mesh lining.
- Removable molded EVA footbed.
- Slip resistant rubber outsole.





STYLE: TB0A2CB8001

SIZES: 7-11,12,13,14,15

CSA GRADE 1 COMPOSITE TOE, COMPOSITE PLATE. ESR.

"SWITCHBACK" WATERPROOF CTCP SAFETY HIKER

- Waterproof leather upper.
- Waterproof breathable membrane.
- Breathable, antimicrobial and moisture wicking lining.
- Timberland PRO® rubber outsole.
- Removable anti-fatigue polyurethane footbed.
- EVA Midsole.



STYLE: 1020096

SIZES: 7-12,13,14,15

CSA GRADE 1 COMPOSITE TOE, COMPOSITE PLATE. ESR.

"HAMILTON" WATERPROOF CTCP SAFETY HIKER

- Waterproof leather upper.
- KEEN DRY® waterproof, breathable membrane.
- Removable metatological polyurethane footbed.
- Dual density compression molded EVA and polyurethane midsole.
- Moisture wicking textile lining.
- Oil and slip resistant, non marking rubber outsole.



STYLE: J003345W

SIZES: 7-12,13,14

CSA GRADE 1 COMPOSITE TOE, COMPOSITE PLATE. ESR.

"JUNGLE MOC" CTCP SAFETY SHOE

- Nubuck leather upper.
- Breathable mesh lining.
- COMFORTBASE™ contoured footbed.
- COMFORTBASE™ rubberized EVA midsole for increased shock absorption and cushion.
- Merrell M Select™ GRIP oil and slip resistant rubber outsole.
- Protective and abrasion resistant synthetic toe cap.
- Wide fit.





ATHLETIC FOOTWEAR



AGGRESSOR

STYLE: 5ANDAG2-3000

SIZES: 7-12,13,14

CSA GRADE 1 COMPOSITE TOE, COMPOSITE PLATE. ESR.

STSP ATHLETIC SAFETY SHOE

- Mesh and TPU upper.
- DRI-TEC lining with FRESHTECH®.
- EVA midsole.
- Removable comfort footbed.
- Rubber outsole.

EXCLUSIVELY AT

Mark's



AGGRESSOR

STYLE: 5ANDAG2-3001

SIZES: 7-11,12,13,14

CSA GRADE 1 COMPOSITE TOE, COMPOSITE PLATE. ESR.

STSP ATHLETIC SAFETY SHOE

- Microfiber and polyurethane upper.
- DRI-TEC lining with FRESHTECH®.
- EVA midsole.
- Removable comfort footbed.
- Rubber outsole.

EXCLUSIVELY AT

Mark's



DAKOTA

WORKPRO SERIES

STYLE: 5ANDDK2-3613

SIZES: 7-11,12,13,14

CSA GRADE 1 STEEL TOE, STEEL PLATE. ESR.

STSP SKATE SAFETY SHOE

- Action Nubuck leather upper.
- DRI-TEC lining with FRESHTECH®.
- Removable comfort footbed.
- TARANTULA ANTISLIP® rubber outsole.

EXCLUSIVELY AT

Mark's





DAKOTA

WORKPRO SERIES

STYLE: 5ANDDK2-3621

SIZES: 7-11,12,13,14

CSA GRADE 1 STEEL TOE, STEEL PLATE. ESR.

"3621" STSP ATHLETIC SAFETY SHOE

- Mesh and TPU Hotmelt upper.
- Breathable lining with FRESHTECH®.
- EVA midsole.
- Removable comfort footbed.
- TARANTULA ANTISLIP® rubber outsole.

EXCLUSIVELY AT

Mark's



DAKOTA

WORKPRO SERIES

STYLE: 5ANDDK8-3603

SIZES: 7-11,12,13,14

CSA GRADE 1 ALUMINUM TOE, STEEL PLATE. ESR.

"3603" QUAD COMFORT® LITE ATSP ATHLETIC SAFETY SHOE

- Mesh upper with welded TPU.
- Breathable mesh lining with FRESHTECH®.
- Injected EVA midsole.
- Removable EVA footbed.
- TARANTULA ANTISLIP® rubber outsole.

EXCLUSIVELY AT

Mark's



DAKOTA

WORKPRO SERIES

STYLE: 5ANDDK8-3604

SIZES: 7-11,12,13,14

CSA GRADE 1 ALUMINUM TOE, STEEL PLATE. ESR.

"3604" QUAD COMFORT® LITE ATSP ATHLETIC SAFETY SHOE

- Mesh upper with welded TPU.
- Breathable mesh lining with FRESHTECH®.
- Injected EVA midsole.
- Removable EVA footbed.
- TARANTULA ANTISLIP® rubber outsole.

EXCLUSIVELY AT

Mark's





DAKOTA

WORKPRO SERIES

STYLE: 5ANDDK6-3617

SIZES: 7-11,12,13,14

CSA GRADE 1 STEEL TOE, STEEL PLATE. ESR.

QUAD COMFORT® LITE STSP MID-CUT ATHLETIC SAFETY SHOE

- High abrasion synthetic upper.
- Breathable lining.
- QUAD COMFORT®, a better way to walk.
- Cushioning EVA midsole.
- Removable EVA footbed.

TARANTULA ANTISLIP® rubber outsole.

EXCLUSIVELY AT

Mark's



DAKOTA

WORKPRO SERIES

STYLE: 5ANDDK3-3821

SIZES: 7-11,12,13,14

CSA GRADE 1 COMPOSITE TOE, COMPOSITE PLATE. ESR.

LIGHTWEIGHT CTCP LOW-CUT ATHLETIC SAFETY SHOE

- Polyester with TPU welding upper.
- Breathable lining with FRESHTECH®.
- QUAD COMFORT®, a better way to walk.
- Removable Poly-Polyurethane footbed.
- TARANTULA ANTISLIP® rubber outsole.

EXCLUSIVELY AT

Mark's



DAKOTA

WORKPRO SERIES

STYLE: 5ANDDK3-3822

SIZES: 7-11,12,13,14

CSA GRADE 1 COMPOSITE TOE, COMPOSITE PLATE. ESR.

LIGHTWEIGHT CTCP MID-CUT ATHLETIC SAFETY SHOE

- Polyester with TPU welding upper.
- Breathable lining with FRESHTECH®.
- QUAD COMFORT®, a better way to walk.
- Removable Poly-Polyurethane footbed.
- TARANTULA ANTISLIP® rubber outsole.

EXCLUSIVELY AT

Mark's





DAKOTA

WORKPRO SERIES

STYLE: 5ANDDK2-4001

SIZES: 7-11,12,13,14

CSA GRADE 1 ALUMINUM TOE, COMPOSITE PLATE. ESR.

MID-CUT AIR BAG ATCP ATHLETIC SAFETY SHOE

- Breathable synthetic upper.
- Breathable mesh lining.
- QUAD COMFORT®, a better way to walk.
- AIRBAG cushioned EVA midsole.
- Removable polyurethane footbed.
- TARANTULA ANTISLIP® rubber outsole.

EXCLUSIVELY AT

Mark's



DAKOTA

WORKPRO SERIES

STYLE: 5ANDDK0-1117QC

SIZES: 7-11,12,13,14,15,16,17

CSA GRADE 1 ALUMINUM TOE, COMPOSITE PLATE. ESR.

TRADITIONAL OXFORD ATCP SAFETY SHOE

- Full grain leather upper.
- Polyester lining.
- QUAD COMFORT®, a better way to walk.
- Poured polyurethane welt midsole.
- Removable polyurethane footbed.
- Durable soft polyurethane outsole.

EXCLUSIVELY AT

Mark's



DAKOTA

WORKPRO SERIES

STYLE: 5ANDDK0-1119QC

SIZES: 7-11,12,13,14,15,16,17

CSA GRADE 1 ALUMINUM TOE, COMPOSITE PLATE. ESR.

TRADITIONAL OXFORD ATCP SAFETY SHOE

- Full grain leather upper.
- Polyester lining.
- QUAD COMFORT®, a better way to walk.
- Poured polyurethane welt midsole.
- Removable polyurethane footbed.
- Durable soft polyurethane outsole.

EXCLUSIVELY AT

Mark's





DAKOTA

WORKPRO SERIES

STYLE: 5ANDDK1-3830

SIZES: 7-11,12,13,14

CSA GRADE 1 STEEL TOE, STEEL PLATE. ESR.

LACE-UP STREET SPORT STSP ATHLETIC SAFETY SHOE

- Canvas upper.
- Breathable mesh lining with FRESHTECH®.
- EVA midsole.
- Removable comfort footbed.
- Rubber outsole.

EXCLUSIVELY AT

Mark's



DAKOTA

WORKPRO SERIES

STYLE: 5ANDDK1-3831

SIZES: 7-11,12,13,14

CSA GRADE 1 STEEL TOE, STEEL PLATE. ESR.

SLIP-ON STREET SPORT STSP ATHLETIC SAFETY SHOE

- Canvas upper.
- Breathable mesh lining with FRESHTECH®.
- EVA midsole.
- Removable comfort footbed.
- Rubber outsole.

EXCLUSIVELY AT

Mark's



DAKOTA

WORKPRO SERIES

STYLE: 5ANDDK0-3819

SIZES: 7-11,12,13,14

CSA GRADE 1 STEEL TOE, STEEL PLATE. ESR.

SLIP-ON STREET SPORT STSP SAFETY SHOE

- Microfibre upper.
- Breathable mesh lining with FRESHTECH®.
- QUAD COMFORT®, a better way to walk.
- Cushioning EVA midsole.
- Removable polyurethane footbed.
- TARANTULA ANTISLIP® rubber outsole.

EXCLUSIVELY AT

Mark's





DAKOTA

WORKPRO SERIES

STYLE: 5ANDDK0-3820

SIZES: 7-11,12,13,14

CSA GRADE 1 STEEL TOE, STEEL PLATE. ESR.

LACE-UP STREET SPORT STSP SAFETY SHOE

- Microfibre upper.
- Breathable mesh lining with FRESHTECH®.
- QUAD COMFORT®, a better way to walk.
- Cushioning EVA midsole.
- Removable polyurethane footbed.
- TARANTULA ANTISLIP® rubber outsole.

EXCLUSIVELY AT

Mark's



STYLE: HHS194002

SIZES: 7-11,12,13,14,15

CSA GRADE 1 STEEL TOE, STEEL PLATE. ESR.

ATSP WELDED ATHLETIC SAFETY SHOE

- High abrasion mesh upper with welded polyurethane overlays for protection.
- Mesh lining.
- Removable Ortholite® footbed.
- HELLYGRIP™ rubber outsole.
- Durable rubber toe guard.

EXCLUSIVELY AT

Mark's



STYLE: HHS194003

SIZES: 7-11,12,13,14,15

CSA GRADE 1 ALUMINUM TOE, STEEL PLATE. ESR.

KNIT ATHLETIC ATSP SAFETY SHOE

- Knit upper with welded TPU overlays for protection.
- Mesh lining.
- Removable Ortholite® footbed.
- HELLYGRIP™ rubber outsole.
- Durable rubber toe guard.

EXCLUSIVELY AT

Mark's





STYLE: HHS214004
SIZES: 7-11,12,13
 CSA GRADE 1 COMPOSITE TOE, COMPOSITE PLATE. ESR.

WATERPROOF LEATHER CTCP SAFETY OXFORD

- HELLYTECH® WATERPROOF Performance waterproof leather upper.
- Moisture wicking Air mesh lining.
- EVA midsole.
- Removable comfort footbed.
- HELLYGRIP™ rubber outsole.

EXCLUSIVELY AT
Mark's



STYLE: HHS222001
SIZES: 7-11,12,13,14
 CSA GRADE 1 COMPOSITE TOE, COMPOSITE PLATE. ESR.

LOW-CUT ATHLETIC CTCP ETPU SAFETY SHOE

- TPU and mesh upper.
- Mesh lining with FRESHTECH®.
- ETPU and EVA midsole.
- Removable polyurethane foam footbed.
- HELLYGRIP™ rubber outsole.

EXCLUSIVELY AT
Mark's



STYLE: HHS222002
SIZES: 7-11,12,13,14
 CSA GRADE 1 COMPOSITE TOE, COMPOSITE PLATE. ESR.

MID-CUT ATHLETIC CTCP ETPU SAFETY SHOE

- TPU and mesh upper.
- Mesh lining with FRESHTECH®.
- ETPU and EVA midsole.
- Removable polyurethane foam footbed.
- HELLYGRIP™ rubber outsole.

EXCLUSIVELY AT
Mark's





STYLE: 108008BLL

SIZES: 7,8-11,12,13

CSA GRADE 1 COMPOSITE TOE, COMPOSITE PLATE. ESR.

"SPIDER X" CTCP SAFETY SHOE

- Full grain leather and suede upper.
- Moisture wicking lining with CLEENFEET® odour control.
- Removable polyurethane footbed.
- Direct injected single density polyurethane midsole and outsole.
- METAL FREE.



STYLE: P725695

SIZES: 7-12,13,14

CSA GRADE 1 COMPOSITE TOE, COMPOSITE PLATE. ESR.

"STREAMLINE" ATHLETIC CTCP SAFETY SHOE

- Nylon mesh, polyurethane coated suede.
- Breathable nylon mesh lining.
- ReVive footbed is built with engineered comfort for a contoured fit and support underfoot.
- Slip-resistant, industrial grade rubber outsole.
- METAL FREE

NEW!



STYLE: P725307

SIZES: 7-11,12,13

CSA GRADE 1 COMPOSITE TOE, COMPOSITE PLATE. ESR.

"STREAMLINE" ATHLETIC CTCP SAFETY SHOE

- Full grain leather upper.
- Breathable mesh lining.
- SRX slip resistant outsole compound with excellent traction and abrasion protection.
- Removable polyurethane footbed.
- METAL FREE





STYLE: P725306

SIZES: 7-11,12,13

CSA GRADE 1 COMPOSITE TOE, COMPOSITE PLATE. ESR.

"STREAMLINE 2.0" ATHLETIC CTCP SAFETY SHOE

- Nylon mesh, TPU and polyurethane upper.
- Breathable mesh lining.
- SRX slip resistant outsole compound with excellent traction and abrasion protection.
- Removable polyurethane footbed.
- METAL FREE.



STYLE: P725179

SIZES: 7-12,13

CSA GRADE 1 ALUMINUM TOE, COMPOSITE PLATE. ESR.

From Caterpillar, the Provoke waterproof safety boots are a good choice for wear on tough job sites. Equipped with CSA-approved safety toes and plates, they have slip-resistant rubber soles offering sound grip on low traction surfaces.

"PROVOKE" ATCP WATERPROOF ATHLETIC SAFETY SHOE

- Polyurethane coated waterproof leather upper.
- Waterproof breathable membrane.
- Breathable nylon mesh lining.
- Removable LEAP technology footbed.
- Slip resistant rubber outsole.





STYLE: TB0A297S001

SIZES: 7-11,12,13,14,15

CSA GRADE 1 COMPOSITE TOE, COMPOSITE PLATE. ESR.

"RADIUS" KNIT MID-CUT CTCP ATHLETIC SAFETY SHOE

- Breathable, durable mesh upper with abrasion resistant reinforcements.
- Breathable, moisture wicking lining with anti-microbial treatment.
- Removable anti-fatigue polyurethane footbed.
- Lightweight HoverSpring foam midsole.
- Timberland PRO® Flex Technology sole with positioned flex grooves.
- METAL FREE.

EXCLUSIVELY AT

Mark's



NEW!



STYLE: TB0A5TYB001-01

SIZES: 7-11,12,13,14,15

CSA GRADE 1 COMPOSITE TOE, COMPOSITE PLATE. ESR.

The Timberland PRO® Morphix safety boots step into the future with maximum agility, ultra-lightweight performance and effortless flex. Built to support hardworking feet, these waterproof boots have the traction you need when walking on variable jobsite terrain.

"MORPHIX" MID-CUT CTCP SAFETY SHOE

- Abrasion resistant coated leather upper.
- Waterproof breathable membrane.
- Re-BOTL breathable, antimicrobial and moisture wicking lining.
- Lightweight HoverSpring foam midsole.
- Timberland PRO® rubber outsole.
- Removable anti-fatigue polyurethane footbed.
- HoverSpring midsole.





STYLE: TB0A5V33001

SIZES: 7-11,12,13,14,15

CSA GRADE 1 COMPOSITE TOE, COMPOSITE PLATE. ESR.

"SETRA" LOW-CUT CTCP ATHLETIC SAFETY SHOE

- Breathable mesh upper with abrasion resistant reinforcements.
- Breathable, moisture wicking lining with anti-microbial treatment.
- Removable anti-fatigue polyurethane footbed.
- EVA midsole.
- Timberland PRO® Flex Technology sole with positioned flex grooves.
- METAL FREE.

EXCLUSIVELY AT

Mark's



STYLE: TB0A29C6001

SIZES: 7-11,12,13,14,15

CSA GRADE 1 COMPOSITE TOE, COMPOSITE PLATE. ESR.

"RADIUS" CTCP ATHLETIC SAFETY SHOE

- Breathable, durable mesh upper with abrasion resistant reinforcements.
- Breathable, moisture wicking lining.
- Removable polyurethane footbed.
- Lightweight HoverSpring foam midsole.
- Timberland PRO® rubber outsole.
- METAL FREE.



STYLE: TB0A5V3Q001

SIZES: 7-11,12,13,14,15

CSA GRADE 1 COMPOSITE TOE, COMPOSITE PLATE. ESR.

"RADIUS" KNIT LOW-CUT CTCP ATHLETIC SAFETY SHOE

- Breathable, durable knit upper with abrasion resistant reinforcements.
- Breathable, moisture wicking lining with anti-microbial treatment.
- Removable anti-fatigue polyurethane footbed.
- Lightweight HoverSpring foam midsole.
- Timberland PRO® Flex Technology sole with positioned flex grooves.
- METAL FREE.

EXCLUSIVELY AT

Mark's





STYLE: TB0A5PS2001

SIZES: 7-11,12,13,14,15

CSA GRADE 1 COMPOSITE TOE, COMPOSITE PLATE. ESR.

"SETRA" LOW-CUT CTCP ATHLETIC SAFETY SHOE

- Breathable mesh upper with abrasion resistant reinforcements.
- Breathable, moisture wicking lining with anti-microbial treatment.
- Removable anti-fatigue polyurethane footbed.
- EVA midsole.
- Timberland PRO® Flex Technology sole with positioned flex grooves.
- METAL FREE.

EXCLUSIVELY AT

Mark's



ROYER

STYLE: 602SP2

SIZES: 4,5-11,12,13,14

CSA GRADE 1 ALUMINUM TOE, COMPOSITE PLATE. ESR.

"INSPADES" LEATHER ATCP SAFETY SHOE

- Full grain leather upper.
- Woven lining with antimicrobial treatment.
- Low density polyurethane footbed with antimicrobial treatment.
- Polyurethane midsole.
- Slip and oil resistant rubber outsole.
- Ultra resistant TECTUFF® toe guard.



ROYER

STYLE: 10-501

SIZES: 4,5-11,12,13,14

CSA GRADE 1 STEEL TOE, COMPOSITE PLATE. ESR.

STCP SAFETY SHOE

- Full grain leather upper.
- Mesh lining.
- Leather and EVA footbed.
- EVA midsole.
- Oil resistant rubber outsole.





Reebok

STYLE: IB4041

SIZES: 2, 3-11, 12, 13, 14, 15

CSA GRADE 1 COMPOSITE TOE, COMPOSITE PLATE. ESR.

"SUBLITE CUSHION" CTCP ATHLETIC SAFETY SHOE

- Microfibre and mesh upper.
- Moisture wicking nylon mesh lining.
- Removable MemoryTech footbed.
- EVA midsole.
- Slip resistant rubber outsole.
- METAL FREE.

NEW!



Reebok

STYLE: IB4311

SIZES: 8-11, 12, 13, 14, 15

CSA GRADE 1 COMPOSITE TOE, COMPOSITE PLATE. ESR.

"FUSION FLEXWEAVE" CTCP ATHLETIC SAFETY SHOE

- Ultraknit and Flexweave™ upper.
- Moisture wicking nylon mesh lining.
- Removable EVA footbed.
- Floatride Energy foam lightweight midsole.
- Slip resistant rubber outsole.
- METAL FREE.

NEW!



Reebok

STYLE: IB3317

SIZES: 7-11, 12, 13, 14, 15

CSA GRADE 1 COMPOSITE TOE, COMPOSITE PLATE. SD.

"NANOFLEX TR" CTCP SD ATHLETIC SAFETY SHOE

- Mesh upper.
- Moisture wicking mesh lining.
- Removable MemoryTech Massage 2.0 cushion footbed.
- EVA midsole.
- Slip resistant rubber outsole.
- METAL FREE.

NEW!





ANTI-SLIP

FOOTWEAR



AGGRESSOR

STYLE: 5ANDAG2-3400
SIZES: 7-11,12,13
NON-SAFETY.

NON-SAFETY LACE UP OXFORD

- Microfiber and polyurethane upper.
- DRI-TEC lining with FRESHTECH®.
- Removable EVA footbed.
- Slip resistant rubber outsole.



AGGRESSOR

STYLE: 5ANDAG2-3401
SIZES: 7-11,12,13
NON-SAFETY.

NON-SAFETY SLIP-ON SHOE

- Microfiber and polyurethane upper.
- DRI-TEC lining with FRESHTECH®.
- Removable EVA footbed.
- Slip resistant rubber outsole.



AGGRESSOR

STYLE: 5ANDAG2-3403
SIZES: 7-11,12,13
NON-SAFETY.

NON-SAFETY LACE-UP SHOE

- Microfiber and polyurethane upper.
- DRI-TEC lining with FRESHTECH®.
- Removable EVA footbed.
- Slip resistant rubber outsole.





DAKOTA

WORKPRO SERIES

STYLE: 5ANDDK0-3025

SIZES: 7-11,12,13,14

NON-SAFETY.

NON-SAFETY SLIP-ON SHOE

- Microfiber and polyurethane upper.
- Breathable mesh lining with FRESHTECH®.
- QUAD COMFORT®, a better way to walk.
- Cushioning EVA midsole.
- Removable EVA footbed.
- TARANTULA ANTI-SLIP® rubber outsole.

EXCLUSIVELY AT

Mark's



DAKOTA

WORKPRO SERIES

STYLE: 5ANDDK0-3026

SIZES: 7-11,12,13,14

NON-SAFETY.

NON-SAFETY LACE-UP SHOE

- Microfiber and polyurethane upper.
- Breathable mesh lining with FRESHTECH®.
- QUAD COMFORT®, a better way to walk.
- Cushioning EVA midsole.
- Removable EVA footbed.
- TARANTULA ANTI-SLIP® rubber outsole.

EXCLUSIVELY AT

Mark's



DAKOTA

WORKPRO SERIES

STYLE: 5ANDDK0-3027

SIZES: 7-11,12,13,14

NON-SAFETY.

NON-SAFETY SKATE SHOE

- Microfiber and polyurethane upper.
- Breathable mesh lining with FRESHTECH®.
- QUAD COMFORT®, a better way to walk.
- Cushioning EVA midsole.
- Removable EVA footbed.
- TARANTULA ANTI-SLIP® rubber outsole.

EXCLUSIVELY AT

Mark's





DAKOTA

WORKPRO SERIES

STYLE: 5ANDDK3-3028

SIZES: 7-11,12,13,14

NON-SAFETY.

NON-SAFETY ATHLETIC SHOE

- TPU and mesh upper.
- Breathable lining with DRI-TEC®.
- QUAD COMFORT®, a better way to walk.
- Removable EVA footbed.
- TARANTULA ANTI-SLIP® rubber outsole.

EXCLUSIVELY AT

Mark's

NEW!



DAKOTA

WORKPRO SERIES

STYLE: 5ANDDK3-3029

SIZES: 7-11,12,13,14

NON-SAFETY.

NON-SAFETY CANVAS SHOE

- Canvas upper.
- Breathable lining with DRI-TEC®.
- QUAD COMFORT®, a better way to walk.
- Removable EVA footbed.
- TARANTULA ANTI-SLIP® rubber outsole.

EXCLUSIVELY AT

Mark's

NEW!



DAKOTA

WORKPRO SERIES

STYLE: 5ANDDK0-3020

SIZES: 7-11,12,13,14

CSA GRADE 1 STEEL TOE, STEEL PLATE. ESR.

STSP SLIP-ON SHOE

- Microfiber and polyurethane upper.
- Breathable mesh lining with FRESHTECH®.
- QUAD COMFORT®, a better way to walk.
- Cushioning EVA midsole
- Removable EVA footbed.
- TARANTULA ANTI-SLIP® rubber outsole.

EXCLUSIVELY AT

Mark's





DAKOTA

WORKPRO SERIES

STYLE: 5ANDDK0-3023

SIZES: 7-11,12,13,14

CSA GRADE 1 STEEL TOE, STEEL PLATE. ESR.

STSP LACE-UP OXFORD

- Microfiber and polyurethane upper.
- Breathable mesh lining with FRESHTECH®.
- QUAD COMFORT®, a better way to walk.
- Cushioning EVA midsole
- Removable EVA footbed.
- TARANTULA ANTI-SLIP® rubber outsole.

EXCLUSIVELY AT

Mark's



DAKOTA

WORKPRO SERIES

STYLE: 5ANDDK0-3021

SIZES: 7-11,12,13,14

CSA GRADE 1 STEEL TOE, STEEL PLATE. ESR.

From Dakota, these safety shoes have steel toes and puncture-resistant steel plates. They're also resistant to electric shock. These men's shoes feature FRESHTECH® Odour protection technology for all day freshness. It inhibits the growth of fungi, mold and mildew, in addition to odour-causing bacteria. TARANTULA ANTI-SLIP® rubber outsoles reduce the likelihood that you'll slip and fall on wet and slick surfaces, making them an ideal option for kitchen, maintenance and janitorial workers.

STSP LACE-UP SHOE

- Microfiber and polyurethane upper.
- Breathable mesh lining with FRESHTECH®.
- QUAD COMFORT®, a better way to walk.
- Cushioning EVA midsole
- Removable EVA footbed.
- TARANTULA ANTI-SLIP® rubber outsole.

EXCLUSIVELY AT

Mark's





TACTICAL FOOTWEAR



MAGNUM

STYLE: 5440

SIZES: 4-12,13,14,15

NON-SAFETY.

STEALTH FORCE II 8.0

- Full grain/Magna shield leather and denier nylon upper delivers ultimate performance, durability and flexibility.
- Durable non-metal, anti glare hardware is tough, lightweight, scratch resistant and airport safe.
- Ankle and fore-foot pads offer added impact protection and support.
- Impact Power breathable PU contoured sock liner.
- RECOIL midsole absorbs impact and provides all-day support and comfort.
- Composite shank offers lightweight, airport safe underfoot support.
- High traction, slip and oil resistant, Michelin outsole for maximum grip.
- Impact Power breathable polyurethane contoured sockliner.



MAGNUM

STYLE: 5402

SIZES: 4-12,13,14,15

CSA GRADE 1 COMPOSITE TOE, COMPOSITE PLATE. ESR.

The updated and upgraded version of the popular Stealth Force has arrived. Offering more branded components, new technology and longer lasting comfort!.

STEALTH FORCE II 8.0 CTCP

- Full grain/Magna shield leather and denier nylon upper delivers ultimate performance, durability and flexibility.
- Durable non-metal, anti glare hardware is tough, lightweight, scratch resistant and airport safe.
- Ankle and fore-foot pads offer added impact protection and support.
- Impact Power breathable PU contoured sock liner.
- RECOIL midsole absorbs impact and provides all-day support and comfort.
- Composite shank offers lightweight, airport safe underfoot support.
- High traction, slip and oil resistant, Michelin outsole for maximum grip.
- Impact Power breathable polyurethane contoured sockliner.
- CSA certified composite toe and plate.





MAGNUM

STYLE: 5419

SIZES: 4-12,13,14,15

CSA GRADE 1 COMPOSITE TOE, COMPOSITE PLATE. ESR.

STEALTH FORCE II 8.0 CTCP SZ WP

- Full grain/Magna shield leather and denier nylon upper.
- Durable non-metal, anti glare hardware is tough, lightweight, scratch resistant and airport safe.
- YKK circular side zip
- Ankle and fore-foot pads offer added impact protection and support.
- Impact Power breathable polyurethane contoured sock liner.
- RECOIL midsole absorbs impact and provides all-day support and comfort.
- Composite shank offers lightweight, airport safe underfoot support.
- High traction, slip and oil resistant, Michelin outsole for maximum grip.
- Waterproof and breathable bootie membrane.
- Impact Power breathable PU contoured sockliner.



MAGNUM

STYLE: 5448

SIZES: 4-12,13,14,15

NON-SAFETY.

STEALTH FORCE II 6.0

- Full grain/Magna shield leather and denier nylon upper delivers ultimate performance, durability and flexibility.
- Durable non-metal, anti glare hardware is tough, lightweight, scratch resistant and airport safe.
- Ankle and fore-foot pads offer added impact protection and support.
- Impact Power breathable PU contoured sock liner.
- RECOIL midsole absorbs impact and provides all-day support and comfort.
- Composite shank offers lightweight, airport safe underfoot support.
- High traction, slip and oil resistant, Michelin outsole for maximum grip.
- Impact Power breathable PU contoured sockliner.



MAGNUM

STYLE: 5420

SIZES: 4-12,13,14,15

CSA GRADE 1 COMPOSITE TOE, COMPOSITE PLATE. ESR.

STEALTH FORCE II 6.0 CTCP SZ WP

- Full grain/Magna shield leather and denier nylon.
- Durable non-metal, anti glare hardware is tough, lightweight, scratch resistant and airport safe.
- YKK circular side zip.
- Ankle and fore-foot pads offer added impact protection and support.
- Impact Power breathable PU contoured sock liner.
- RECOIL midsole absorbs impact and provides all-day support and comfort.
- Composite shank offers lightweight, airport safe underfoot support.
- High traction, slip and oil resistant, Michelin outsole for maximum grip.
- Waterproof and breathable bootie membrane.
- Impact Power breathable polyurethane contoured sockliner.





STATIC DISSIPATIVE FOOTWEAR



DAKOTA

WORKPRO SERIES

STYLE: 5ANDDK9-3200

SIZES: 7-11,12,13,14,15

CSA GRADE 1 ALUMINUM TOE. SD.

SD LACE-UP LEATHER SAFETY SHOE

- Leather upper.
- Breathable lining with FRESHTECH®.
- QUAD COMFORT®, a better way to walk.
- Compression molded EVA midsole.
- Removable polyurethane footbed.
- Rubber outsole.

EXCLUSIVELY AT

Mark's



DAKOTA

WORKPRO SERIES

STYLE: 5ANDDK9-3201

SIZES: 7-11,12,13,14,15

CSA GRADE 1 ALUMINUM TOE. SD.

SD SLIP-ON LEATHER SAFETY SHOE

- Leather upper.
- Breathable lining with FRESHTECH®.
- QUAD COMFORT®, a better way to walk.
- Compression molded EVA midsole.
- Removable polyurethane footbed.
- Rubber outsole.

EXCLUSIVELY AT

Mark's



Timberland PRO

STYLE: TB0A2A55001

SIZES: 7-11,12,13,14,15

CSA GRADE 1 COMPOSITE TOE, COMPOSITE PLATE. SD.

"RADIUS" CTCP SD ATHLETIC SAFETY SHOE

- Durable, breathable mesh upper with abrasion resistant reinforcements.
- Breathable lining.
- Removable anti-fatigue polyurethane footbed.
- Lightweight HoverSpring™ foam midsole.
- Timberland PRO® rubber outsole.





WET WEATHER FOOTWEAR



AGGRESSOR

STYLE: 5ANEAG2-9600
SIZES: 7-13 Full Sizes Only
 NON-SAFETY.

NST INSULATED WET WEATHER BOOT

- Waterproof molded TPO upper.
- Wool blend liner is tested to a comfort rating -20°C-30°C.
- Long wearing, self cleaning outsole.

EXCLUSIVELY AT

Mark's

LINER AVAILABLE 5ANFAG3-01LNR



AGGRESSOR

STYLE: 5ANEAG2-9500
SIZES: 7-13 Full Sizes Only
 CSA GRADE 1 STEEL TOE, STEEL PLATE. ESR.

STSP INSULATED WET WEATHER BOOT

- Waterproof molded TPO upper.
- Wool blend liner is tested to a comfort rating -20°C-30°C.
- Long wearing, self cleaning outsole.

EXCLUSIVELY AT

Mark's

LINER AVAILABLE 5ANFAG3-01LNR



DAKOTA
WORKPRO SERIES

STYLE: 5ANEDK3-9860
SIZES: 7-13 Full Sizes Only
 NON-SAFETY.

NST SYNTROL PREMIUM INJECTED BOOT

- Thermoplastic Rubber upper.
- Unlined.
- Premium poured polyurethane footbed.
- Thermoplastic Rubber midsole, outsole.





DAKOTA
WORKPRO SERIES

STYLE: 5ANEDK3-9850
SIZES: 7-13 Full Sizes Only
CSA GRADE 1 STEEL TOE, STEEL PLATE. ESR.

STSP SYNTROL PREMIUM INJECTED BOOT

- Thermoplastic Rubber upper.
- Unlined.
- Poured polyurethane footbed.
- Thermoplastic Rubber midsole, outsole.



HH
workwear

STYLE: HHS214011
SIZES: 5-15 Full Sizes Only
NON-SAFETY.

NON SAFETY POLYURETHANE BOOT

- Polyurethane upper.
- Comfort Rating -20° to -30°C.
- HELLYGRIP® rubber outsole provides high traction in wet environments.
- Polyurethane footbed for added comfort.

EXCLUSIVELY AT
Mark's



HH
workwear

STYLE: HHF234011
SIZES: 5-14 Full Sizes Only
NON-SAFETY.

NON-SAFETY POLYURETHANE BOOT

- Polyurethane upper.
- Comfort Rating -20° to -30°C.
- Removable polyurethane footbed.

EXCLUSIVELY AT
Mark's

NEW!





STYLE: HHF234012
SIZES: 7-14 Full Sizes Only
 CSA GRADE 1 STEEL TOE, STEEL PLATE. ESR.

STSP POLYURETHANE BOOT

- Polyurethane upper.
- Comfort Rating -20° to -30°C.
- Removable polyurethane footbed.

EXCLUSIVELY AT
Mark's



STYLE: HHS214012
SIZES: 7-14 Full Sizes Only
 CSA GRADE 1 STEEL TOE, STEEL PLATE. ESR.

Ideal for work areas where water, oil and chemicals are present, these tall PU Steel Toe Steel Plate moulded boots from Helly Hansen feature nylon linings that make them easy to slip on and off. The boots have PU insoles and lightweight injected PU outsoles for good traction on wet and slippery floors or outdoor roadways.

STSP POLYURETHANE BOOT

- Waterproof injected polyurethane upper.
- Nylon lining.
- HELLYGRIP® lightweight injected polyurethane outsole.
- Removable polyurethane footbed.

EXCLUSIVELY AT
Mark's





STYLE: HHF196120
SIZES: 7-14 Full Sizes Only
 CSA GRADE 1 STEEL TOE, STEEL PLATE. ESR.

STSP POLYURETHANE WORK BOOT

- Polyurethane upper.
- Comfort Rating -20° to -30°C.
- HELLYGRIP® rubber outsole provides high traction in wet environments.
- Polyurethane footbed for added comfort.

EXCLUSIVELY AT
Mark's



STYLE: HHF236121
SIZES: 7-14 Full Sizes Only
 CSA GRADE 1 STEEL TOE, STEEL PLATE. ESR.

STSP COLD WEATHER POLYURETHANE BOOT

- Polyurethane upper.
- Nylon lining.
- Removable polyurethane footbed.

EXCLUSIVELY AT
Mark's



STYLE: LICO-M001
SIZES: 7-14 Full Sizes Only
 NON-SAFETY.

"BLACKHAWK" NON SAFETY WET WEATHER BOOT

- Lightweight Thermal Rubber (TR) compound upper.
- Unlined.
- Removable comfort footbed.
- Self-cleaning outsole with TPR outsole.





STYLE: LICO-MP01
SIZES: 7-15 Full Sizes Only
 CSA GRADE 1 STEEL TOE, STEEL PLATE. ESR.

"BLACKHAWK" STSP WET WEATHER BOOT

- Lightweight Thermal Rubber (TR) compound upper.
- Unlined.
- Removable comfort footbed.
- Self-cleaning outsole with TPR outsole.



STYLE: 8564
SIZES: 6-14 Full Sizes Only
 CSA GRADE 1 STEEL TOE, STEEL PLATE. ESR.

"HUNTER" STSP FELT LINED RUBBER BOOT

- Fully moulded Arctic™ rubber upper provides cold-resistance and resilience.
- Removable Tri-Fit multi-layer liner for insulation and heat regulation.
- Nylon Snow collar to protect from the elements.
- Lightweight and flexible Arctic Rubber self-cleaning outsole.



STYLE: 9699
SIZES: 7-14 Full Sizes Only
 CSA GRADE 1 STEEL TOE, STEEL PLATE. ESR.

"MAXIMUM" STSP OARPRENE BOOT

- Molded seamless Oarprene upper.
- Generous wider fit.
- Comfort crafted footbed.
- Gelflex fatigue resistant midsole.
- Oil and acid resistant, self cleaning outsole.





STYLE: PB661841MWCSA
SIZES: 6-15 Full Sizes Only, (excl. 12)
 CSA GRADE 1 STEEL TOE, STEEL PLATE. ESR.

“PUROFORT THERMO+” STSP POLYURETHANE BOOT

- Lightweight, long wearing polyurethane upper.
- Thermo+ extreme cold weather lining.
- Polyurethane outsole provides high traction in wet environments.
- Premium footbed.
- Static dissipative.



STYLE: LPLKL01
SIZES: 5-15 Full Sizes Only
 CSA GRADE 1 COMPOSITE TOE, COMPOSITE PLATE. ESR.

“FIELDPRO” THERMOPLUS CTCP BOOT

- Waterproof Purofort polyurethane upper.
- Sneaker fit eliminates heel slippage.
- FIELDPRO THERMO+ insulation.
- Removable footbed.
- Injected polyurethane midsole.
- Polyurethane outsole with tread wear indicators.
- Comfort rating -60°C.



STYLE: E902033
SIZES: 5-15 Full Sizes Only
 CSA GRADE 1 COMPOSITE TOE, COMPOSITE PLATE. ESR.

“EXPLORER” VIBRAM STSP POLYURETHANE BOOT

- Flexible Purofort upper.
- Dunlop branded red welded lining.
- Thermal insulation up to -20°C.
- Premium footbed.
- Dirt-repellant, oil resistant, slip resistant VIBRAM® FIRE & ICE outsole with wide lugs and ladder grip for extra stability.





STYLE: TR113001BLK-1
SIZES: 8-16 Full Sizes Only
 CSA GRADE 1 COMPOSITE TOE, COMPOSITE PLATE. ESR.

"NARVIK" METGUARD CTCP BOOT

- Thermal polyurethane upper.
- XRD® internal metatarsal protection.
- Moisture wicking neo-spacer lining.
- Premium single-density polyurethane footbed.
- Heavy duty all terrain rubber outsole.
- Internal metatarsal protection.



STYLE: A1305B-11
SIZES: 6-17 Full Sizes Only
 NON-SAFETY.

LOW CUT WIDE FIT OVERSHOE

- Waterproof natural rubber.
- Knit lining.
- Short tongue covering the laces.
- Extra large last for boots with metatarsal guard and very thick outsole.



STYLE: 3186-11A
SIZES: 6-15 Full Sizes Only
 NON-SAFETY.

SINGLE STRAP WORK BOOT OVERSHOE

- Rubber upper.
- Unlined.
- Rubber outsole.



WINTER FOOTWEAR



AGGRESSOR

STYLE: 5ANFAGW0-8910

SIZES: 7-14 Full Sizes Only

CSA GRADE 1 STEEL TOE, STEEL PLATE. ESR.

WINTER TRANSITIONAL STSP WINTER WORK BOOT

- Polyurethane Nubuck upper.
- DRI-TEC lining with 200g T-MAX® insulation.
- Flat molded shell.
- Rubber outsole.

EXCLUSIVELY AT

Mark's



DAKOTA

WORKPRO SERIES

STYLE: 5ANFDKW2-8907

SIZES: 7-14 Full Sizes Only

CSA GRADE 1 COMPOSITE TOE, COMPOSITE PLATE. ESR.

Tough and ready for extreme jobsite conditions, our Dakota men's work boots protect your feet with composite toes and plates. They keep them warm as well with our T-MAX® INSULATION that provides maximum warmth and superior comfort, and our FRESHTECH® Odour portection technology for all day freshness. The ICEFX® outsoles on these safety boots are constructed with leading edge technology for advanced traction on ice.

"8907" ICEFX® TRANSITIONAL CTCP WINTER WORK BOOT

- Action leather upper with TPU full shell.
- Mesh lining with 400g T-MAX® insulation.
- Removable comfort footbed.
- EVA midsole.
- ICEFX® rubber outsole with GREEN DIAMOND® & Icelandic grip.

EXCLUSIVELY AT

Mark's





DAKOTA

WORKPRO SERIES

STYLE: 5ANFDKW3-8901

SIZES: 7-15 Full Sizes Only

CSA GRADE 1 COMPOSITE TOE, COMPOSITE PLATE. ESR.

"8901" CTCP WINTER WORK BOOT

NEW!

- Diesel & oil resistant waterproof full grain leather upper.
- HYPER-DRI® HD3 waterproof, breathable membrane.
- 400g T-MAX® insulation.
- Removable liner system.
- TPU DURATOE® Guard.
- ICEFX® rubber outsole with GREEN DIAMOND® Technology.

EXCLUSIVELY AT

Mark's



DAKOTA

WORKPRO SERIES

STYLE: 5ANFDKW8-8530

SIZES: 7-14 Full Sizes Only

CSA GRADE 1 STEEL TOE, STEEL PLATE. ESR.

"8530" STSP WINTER FELT PACK WINTER BOOT

- Textile upper.
- Lightweight EVA Shell.
- Removable liner with 200g T-MAX® insulation.
- QUAD COMFORT®, a better way to walk.
- Rubber outsole.
- Comfort Rating -50°C to -60°C.

EXCLUSIVELY AT

Mark's

LINER AVAILABLE LNR-8530DWG



DAKOTA

WORKPRO SERIES

STYLE: 5ANFDKW8-8527

SIZES: 7-14 Full Sizes Only

CSA GRADE 1 STEEL TOE, STEEL PLATE. ESR.

"8527" STSP LEATHER FELT PACK WINTER BOOT

- Waterproof leather upper.
- Lightweight EVA Shell.
- Removable liner with 200g T-MAX® insulation.
- ICEFX® rubber outsole with GREEN DIAMOND® technology.
- QUAD COMFORT®, a better way to walk.
- Comfort Rating -40°C to -50°C.

EXCLUSIVELY AT

Mark's





DAKOTA

WORKPRO SERIES

STYLE: 5ANFDKW6-8524

SIZES: 7-15 Full Sizes Only

CSA GRADE 1 COMPOSITE TOE, COMPOSITE PLATE. ESR.

"8524" CTCP SYNTROL FELT PACK WINTER BOOT

- Oil, Diesel & chemical resistant Syntrol upper .
- Oil Resistant polyurethane shell.
- Superior removable liner system with 400g T-MAX® insulation.
- QUAD COMFORT®, a better way to walk.
- 6MM Frost Plug helps keep feet dry and warm.
- Oil resistant midsole.
- Oil & Diesel resistant ICEFX® outsole.
- Comfort Rating -50°C to -60°C.

EXCLUSIVELY AT

Mark's

LINER AVAILABLE 5ANF-LNR-8524



STYLE: HHF221101

SIZES: 7-14 Full Sizes Only

CSA GRADE 1 COMPOSITE TOE, COMPOSITE PLATE. ESR.

CTCP POLYURETHANE WINTER BOOT

- Split leather upper with polyurethane shell.
- HELLYTECH® WATERPROOF Performance waterproof membrane.
- Breathable lining with FRESHTECH®.
- 400g T-MAX® Insulation.
- Removable polyurethane footbed.
- HELLYGRIP™ rubber outsole.

EXCLUSIVELY AT

Mark's



STYLE: HHF231102

SIZES: 7-14 Full Sizes Only

CSA GRADE 1 COMPOSITE TOE, COMPOSITE PLATE. ESR.

CTCP SAFETY WINTER WORK BOOT

NEW!

- Nylon Ripstop upper .
- HELLYTECH® WATERPROOF Performance waterproof membrane.
- Helcore Groove leather toe cap and heel counter.
- Removable EVA footbed with T-MAX® HEAT lining.
- Removable Aero Foam liner with T-MAX® .
- ICEFX® rubber outsole with GREEN DIAMOND® technology.

EXCLUSIVELY AT

Mark's

LINER AVAILABLE HHF23-LNR-1102





STYLE: HHF231103
SIZES: 7-15 Full Sizes Only
 CSA GRADE 1 COMPOSITE TOE, COMPOSITE PLATE. ESR.

CTCP WINTER FELT PACK BOOT



- Oil resistant fabric upper.
- Polyurethane full shell with reflective material on toe and heel.
- Removable EVA footbed with T-MAX® HEAT lining.
- Superior removable liner with 400g T-MAX® insulation.
- Removable EVA frost plug.
- ICEFX® rubber outsole with GREEN DIAMOND® technology.

EXCLUSIVELY AT
Mark's

LINER AVAILABLE HHF23-LNR-1103



STYLE: 915605
SIZES: 7-14 Full Sizes Only
 CSA GRADE 1 COMPOSITE TOE, COMPOSITE PLATE. ESR.

"CROSSBOW" CTCP TRANSITIONAL WINTER BOOT

- Full grain waterproof sealed-seam leather upper.
- Direct-injected cold formulated polyurethane shell bottom.
- CLEANFEET® odour-control treatment.
- Removable TERRASPHERE™ 4 layer liner system.
- High-traction thermal-tested rubber outsole with diamond cleat design.
- METAL FREE.



STYLE: TB0A5QXJ001
SIZES: 4-16 Full Sizes Only
 CSA GRADE 1 COMPOSITE TOE, COMPOSITE PLATE. ESR.

"PAC MAX" CTCP 10" WINTER BOOT



- Ever-Guard™ waterproof leather upper.
- Waterproof breathable membrane.
- Polyurethane shell and midsole.
- Removable frost plug.
- All weather TPU outsole.
- Heavy weight liner with comfort rating to -60° C.
- Multiple handles for easy entry/exit.

MIDWEIGHT LINER AVAILABLE TB0A5TTB484
 HEAVY LINER AVAILABLE TB0A5MR2827



GET THE TRACTION YOU NEED THIS WINTER

WINTER WALKING

TRANSITIONAL TRACTION® ICE CLEATS

TRANSITIONAL TRACTION® ice cleats are designed for the employees who are often the most difficult to provide traction for; those who frequently transition from outdoors to indoor settings and/or drive vehicles.

The key to TRANSITIONAL TRACTION® devices is that they can be left on all day without the need to be removed each time you walk indoors.



LOW-PRO® Ice Cleat

A compact, light weight industrial strength ice and snow walking device that fits over all types of shoes and boots. Extremely easy to use and light in weight, they are virtually inconspicuous on the user's foot.

Low-Profile Studs for Versatile Traction

- 26 permanent tungsten carbide studs for max durability.
- Safer to wear indoors and while driving.
- Dual rear pull-tab for easy on/off.

SIZES: 5-13.5+ (Men's),
7-11.5+ (Women's)

STYLE: JD6610



ICE BEAST® Low-Pro

Features 28 permanent low-profile tungsten carbide studs for transitional traction in outdoor and indoor settings.

Low-Profile Studs for Versatile Traction

- 28 durable tungsten carbide studs.
- Complete access to defined heel for safe climbing.
- Dual pull tabs for easy on/off.
- Wing-tip connection points keep steel chains off walking surface.
- Safer to wear indoors and while driving.
- Extremely pliable upper ring for easy on/off.

SIZES: 5-14+ (Men's),
7-12+ (Women's)

STYLE: JD7710





WOMEN'S

8 INCH
FOOTWEAR



AGGRESSOR

STYLE: 5BOAAG6-8500

SIZES: 5-11 (incl. half)

CSA GRADE 1 STEEL TOE, STEEL PLATE. ESR.

WOMEN'S 8" STSP WORK BOOT

- Buffalo Nubuck leather upper.
- Breathable air mesh lining.
- Removable EVA footbed.
- Polyurethane toe guard.

EXCLUSIVELY AT

Mark's



DAKOTA
WORKPRO SERIES

STYLE: 5BOADK1-8020

SIZES: 6-10,11

CSA GRADE 1 STEEL TOE, STEEL PLATE. ESR.

WOMEN'S 8" "8020" STSP WORK BOOT

- Buffalo leather upper.
- Breathable mesh lining with FRESH TECH®.
- QUAD COMFORT®, a better way to walk.
- Removable EVA footbed.
- Polyurethane/TPU Outsole.
- TPU DURATOE®.

EXCLUSIVELY AT

Mark's



DAKOTA
WORKPRO SERIES

STYLE: 5BOADKO-8030

SIZES: 5,6-11

CSA GRADE 1 STEEL TOE, STEEL PLATE. ESR.

WOMEN'S 8" "8030" STSP WORK BOOT

- Full grain leather upper
- DRI-TEC with FRESHTECH® treated lining.
- 200g T-MAX Insulation.
- QUAD COMFORT®, a better way to walk.
- EVA midsole.
- Removable polyurethane footbed.
- TARANTULA ANTISLIP® rubber outsole, engineered to help prevent slips and falls.

EXCLUSIVELY AT

Mark's





DAKOTA

WORKPRO SERIES

STYLE: 5BOARDK4-8006

SIZES: 5,6-11

CSA GRADE 1 STEEL TOE, COMPOSITE PLATE. ESR.

WOMEN'S QUAD COMFORT 8" "8006" STCP WORK BOOT

- Nubuck leather upper.
- Breathable & moisture wicking Cambrelle lining with 200g T-MAX® insulation.
- QUAD COMFORT®, a better way to walk.
- Removable 4 density EVA Ortholite® footbed.
- Direct injected PU midsole.
- TARANTULA ANTISLIP® rubber outsole, engineered to help prevent slips and falls.

EXCLUSIVELY AT

Mark's



DAKOTA

WORKPRO SERIES

STYLE: 5BOARDK9-8016

SIZES: 6-10,11

CSA GRADE 1 STEEL TOE, STEEL PLATE. ESR.

These Dakota women's eight-inch work boots are made of leather uppers with protective toe bumpers. Safety features include steel toes, puncture resistant plates and electric shock resistance. Additionally, underfoot support features EVA midsoles and an additional layer of EVA for extra comfort. These work boots are built with Tarantula Anti-Slip® outsoles that provide the ultimate in slip protection by reducing the likelihood that you'll slip and fall on wet and/or greasy surfaces.*

8" STSP QUAD COMFORT® LITE WORK BOOT

- Suede leather upper.
- DRI-TEC with FRESHTECH® treated lining.
- QUAD COMFORT®, a better way to walk.
- Compression molded EVA midsole.
- TARANTULA® ANTI-SLIP rubber outsole, engineered to help prevent slips and falls.

EXCLUSIVELY AT

Mark's





DAKOTA

WORKPRO SERIES

STYLE: 5BOARDK5-8112

SIZES: 6-11

CSA GRADE 1 STEEL TOE, COMPOSITE PLATE. ESR.

WOMEN'S 8" STCP INTERNAL METUARD BOOT

- Full grain leather upper with side zipper
- Breathable & moisture wicking mesh lining.
- 200g TMAX® Insulation.
- QUAD COMFORT®, a better way to walk.
- Removable 4 density footbed.
- TARANTULA® ANTI-SLIP rubber outsole, engineered to help prevent slips and falls.
- Internal metatarsal protection.

EXCLUSIVELY AT

Mark's



STYLE: HHS202181W

SIZES: 6-11

CSA GRADE 1 STEEL TOE, COMPOSITE PLATE. ESR.

WOMEN'S 8" "BERGEN" STCP WORK BOOT

- Waterproof leather upper.
- HELLYTECH® WATERPROOF Waterproof membrane.
- DRI-TEC with FRESHTECH® treated lining.
- 200g T-MAX® insulation.
- Removable EVA footbed
- HELLYGRIP™ Rubber Outsole.

EXCLUSIVELY AT

Mark's



STYLE: P311182

SIZES: 5-10, 11

CSA GRADE 1 STEEL TOE, STEEL PLATE. ESR.

WOMEN'S 8" "CLOVER" STSP WORK BOOT

- Full grain leather upper with knit collar
- Nylon lining.
- EASE footbed.
- Molded EVA midsole.
- Rubber outsole.





STYLE: TBOA1KQS001

SIZES: 5.5-10,11

CSA GRADE 1 COMPOSITE TOE, COMPOSITE PLATE.ESR.

WOMEN'S 8" "ENDURANCE HD" CTCP WATERPROOF WORK BOOT

- Premium waterproof leather upper.
- Waterproof breathable membrane.
- Re-BOTL breathable, antimicrobial and moisture wicking lining.
- 200g Thermolite® Insulation.
- Removable anti-fatigue footbed.
- Polyurethane midsole.
- Timberland PRO® Oil, slip, abrasion resistant non-marking flexible rubber outsole.
- Internal metatarsal protection.



STYLE: TB1A5V1U214

SIZES: 5.5-10,11

CSA GRADE 1 COMPOSITE TOE, COMPOSITE PLATE.ESR.

WOMEN'S 8" "BOONDOCK" CTCP WATERPROOF WORK BOOT

- Premium waterproof leather upper.
- Waterproof breathable membrane.
- Re-BOTL breathable, antimicrobial and moisture wicking lining.
- Removable anti-fatigue footbed.
- Polyurethane midsole.
- VIBRAM® FIRE & ICE outsole.
- VIBRAM® molded rubber toe.

EXCLUSIVELY AT
Mark's



STYLE: TROA4NRDBLK-01

SIZES: 5-10,11

CSA GRADE 1 COMPOSITE TOE, COMPOSITE PLATE.ESR.

WOMEN'S 8" "BRENN" CTCP METGUARD WORK BOOT

- Full grain waterproof leather upper.
- Internal metatarsal protection.
- Moisture wicking, abrasion resistant lining with 200g Thinsulate™ insulation.
- Removable polyurethane footbed.
- Polyurethane midsole.
- TPU outsole.





WOMEN'S

6 INCH
FOOTWEAR

TARANTULA®



AGGRESSOR

STYLE: 5BOBAG4-6500

SIZES: 5,6-11

CSA GRADE 1 STEEL TOE, STEEL PLATE. ESR.

WOMEN'S 6" STSP WORK BOOT

- Buffalo Nubuck leather upper.
- Breathable Air Mesh lining.
- Removable EVA footbed.
- Polyurethane toe guard.

EXCLUSIVELY AT

Mark's



DAKOTA
WORKPRO SERIES

STYLE: 5BOBDK1-6020

SIZES: 6-10,11

CSA GRADE 1 STEEL TOE, STEEL PLATE. ESR.

In tough buffalo leather, these women's work boots are built for safety and comfort. They're padded around the collar and tongue and have breathable mesh linings. Our FRESHTECH® odour protection technology provides all-day freshness. The boots meet CSA Grade 1 safety standards with steel toes and puncture-resistant plates.

6" "6020" STSP WORK BOOT

- Buffalo leather upper.
- Breathable mesh lining with FRESH TECH®.
- QUAD COMFORT®, a better way to walk.
- Removable EVA footbed.
- Polyurethane/TPU outsole.
- TPU DURATOE® toe guard.

EXCLUSIVELY AT

Mark's





DAKOTA

WORKPRO SERIES

STYLE: 5BOBDK2-6030

SIZES: 6-10,11

CSA GRADE 1 STEEL TOE, STEEL PLATE. ESR.

WOMEN'S 6" "6030" STSP WORK BOOT

- Full grain leather upper.
- DRI-TEC with FRESHTECH® treated lining.
- 200g T-MAX® insulation.
- QUAD COMFORT®, a better way to walk.
- EVA midsole.
- Removable polyurethane Footbed
- TARANTULA® ANTI-SLIP rubber outsole, engineered to help prevent slips and falls.

EXCLUSIVELY AT

Mark's



DAKOTA

WORKPRO SERIES

STYLE: 5BOBDK6-6006

SIZES: 5,6-11

CSA GRADE 1 STEEL TOE, COMPOSITE PLATE. ESR.

WOMEN'S QUAD COMFORT 6" STCP WORK BOOT

- Nubuck leather upper.
- Breathable & moisture wicking Cambrelle lining with 200g T-MAX® insulation.
- QUAD COMFORT®, a better way to walk.
- Removable 4 density EVA Ortholite® footbed.
- Direct injected PU midsole.
- TARANTULA® ANTI-SLIP rubber outsole, engineered to help prevent slips and falls.

EXCLUSIVELY AT

Mark's



DAKOTA

WORKPRO SERIES

STYLE: 5BOBDK5-6016

SIZES: 6-10,11

CSA GRADE 1 STEEL TOE, COMPOSITE PLATE. ESR.

WOMEN'S QUAD COMFORT 6" STCP WORK BOOT

- Suede leather upper.
- DRI-TEC with FRESHTECH® treated lining.
- QUAD COMFORT®, a better way to walk.
- Compression molded EVA midsole.
- TARANTULA® ANTI-SLIP rubber outsole, engineered to help prevent slips and falls.

EXCLUSIVELY AT

Mark's





STYLE: HHS202160W

SIZES: 6-11

CSA GRADE 1 STEEL TOE, COMPOSITE PLATE. ESR.

WOMEN'S 6" "BERGEN" STCP WATERPROOF BOOT

- Waterproof leather upper.
- HELLYTECH® WATERPROOF. Waterproof Membrane
- DRI-TEC with FRESHTECH® treated lining.
- 200g T-MAX® insulation.
- Removable EVA footbed.
- HELLYGRIP™ Rubber Outsole.

EXCLUSIVELY AT

Mark's



STYLE: HHF191061W

SIZES: 6-11

CSA GRADE 1 ALUMINUM TOE, COMPOSITE PLATE. ESR.

Tough and ready for long days on the jobsite, these Helly Hansen women's work boots meet CSA Grade 1 requirements for toe and underfoot protection. They also resist electric shock. The six-inch boots are fully insulated for cold weather conditions. They feature moisture-wicking linings and are treated to inhibit the growth of fungi, mold and mildew as well as odour-causing bacteria.

6" ATCP HIGH ABRASION WORK BOOT

- Lenzi abrasion resistant woven upper.
- DRI-TEC with FRESHTECH® treated lining.
- 200g T-MAX® insulation.
- Removable EVA footbed.
- HELLYGRIP™ Rubber Outsole.

EXCLUSIVELY AT

Mark's





STYLE: P310912

SIZES: 5-10

CSA GRADE 1 STEEL TOE, COMPOSITE PLATE. ESR.

WOMEN'S "ABBEY" STCP PULL-ON BOOT

- Nubuck leather upper.
- Nylon mesh lining for added breathability and comfort.
- Removable molded EVA footbed.
- Lightweight EVA midsole.
- Oil, slip, abrasion resistant rubber outsole.
- Molded heel counter.



KODIAK®

STYLE: KD0A4TDFBLK

SIZES: 5-10,11

CSA GRADE 1 COMPOSITE TOE, COMPOSITE PLATE. ESR.

WOMEN'S 6" "BRALORNE" CHELSEA CTCP WORK BOOT

- Removable Comfortzone™ OrthoLite® footbed.
- Abrasion-resistant lining wicks away moisture.
- Kodiak® SOS Smell Out Science® odour control.
- Full grain leather upper.
- Oil & slip resistant, non-marking rubber outsole.



STYLE: TB0A1KJU214

SIZES: 5.5-10,11

CSA GRADE 1 ALUMINUM TOE, COMPOSITE PLATE. ESR.

WOMEN'S "HIGHTOWER" ATCP WORK BOOT

- Premium leather upper.
- Re-BOTL breathable, antimicrobial and moisture wicking lining.
- Removable anti-fatigue footbed.
- Polyurethane midsole.
- Timberland PRO® all-weather, Oil, Heat and Slip resistant TPU outsole.

NEW!





STYLE: TB0A2KAJ231

SIZES: 5.5-10,11

CSA GRADE 1 ALUMINUM TOE, COMPOSITE PLATE. ESR.

WOMEN'S "ICON" ATSP WATERPROOF WORK BOOT

- Premium leather upper.
- Waterproof, breathable membrane.
- Re-BOTL breathable, antimicrobial and moisture wicking lining.
- Removable anti-fatigue footbed.
- Polyurethane midsole.
- Timberland PRO® oil, slip and abrasion-resistant non-marking flexible, rubber outsole.



STYLE: TB1A5V2F001

SIZES: 5.5-10,11

CSA GRADE 1 COMPOSITE TOE, COMPOSITE PLATE. ESR.

Tough and ready for long days on the jobsite, these Helly Hansen women's work boots meet CSA Grade 1 requirements for toe and underfoot protection. They also resist electric shock. The six-inch boots are fully insulated for cold weather conditions. They feature moisture-wicking linings and are treated to inhibit the growth of fungi, mold and mildew as well as odour-causing bacteria.

WOMEN'S "BOONDOCK" CTCP WATERPROOF BOOT

- Premium waterproof leather upper.
- Waterproof, breathable membrane.
- Re-BOTL breathable, antimicrobial and moisture wicking lining.
- Removable anti-fatigue footbed.
- Polyurethane midsole.
- VIBRAM® FIRE & ICE outsole.
- VIBRAM® molded rubber toe.

EXCLUSIVELY AT

Mark's





STYLE: 163-01
SIZES: 6-11.5

CSA GRADE 1 COMPOSITE TOE, COMPOSITE PLATE. ESR.

6" LEATHER PULL-ON CTCP WORK BOOT

- CSA Grade 1 protective toe cap.
- Weatherproof leather is an industry-leading 2.5 mm thick, yet 'breathes' for absolute comfort.
- Dual-density polyurethane midsole and thermo-polyurethane (TPU) outsole: weatherproof, durable, lightweight and provides reliable certified traction.
- XRD® footbed for all-day comfort and support.
- Puncture resistant mid-soles by Lenzi: lighter, safer, more flexible, more comfortable and warmer than steel.
- Injection molded soles -no adhesives to come unglued, no stitching to rot.
- Heat, slip, oil, acid and electric shock-resistant sole.
- Comfort EVA removable footbed with XRD® in the heel pad.



ONLY AVAILABLE ONLINE AT:
MARKSCOMMERCIAL.COM



STYLE: 168-01
SIZES: 7-11.5

CSA GRADE 1 COMPOSITE TOE, COMPOSITE PLATE. ESR.

6" LEATHER PULL-ON CTCP WORK BOOT

- CSA Grade 1 protective toe cap.
- Weatherproof leather is an industry-leading 2.5 mm thick, yet 'breathes' for absolute comfort.
- Dual-density polyurethane midsole and thermo-polyurethane (TPU) outsole: weatherproof, durable, lightweight and provides reliable certified traction.
- XRD® footbed for all-day comfort and support.
- Puncture resistant mid-soles by Lenzi: lighter, safer, more flexible, more comfortable and warmer than steel.
- Injection molded soles -no adhesives to come unglued, no stitching to rot.
- Heat, slip, oil, acid and electric shock-resistant sole.
- Comfort EVA removable footbed with XRD® in the heel pad.



ONLY AVAILABLE ONLINE AT:
MARKSCOMMERCIAL.COM



STYLE: 180-01
SIZES: 6-11.5

CSA GRADE 1 COMPOSITE TOE, COMPOSITE PLATE. ESR.

6" LEATHER PULL-ON CTCP WORK BOOT

- CSA Grade 1 protective toe cap.
- Weatherproof leather is an industry-leading 2.5 mm thick, yet 'breathes' for absolute comfort.
- Dual-density polyurethane midsole and thermo-polyurethane (TPU) outsole: flexible, lightweight and durable.
- XRD® footbed for all-day comfort and support.
- Injection molded soles -- no adhesives to come unglued, no stitching to rot.
- Heat, slip, oil, acid and electric shock-resistant sole.
- Heat-formed heel for a snug fit.



ONLY AVAILABLE ONLINE AT:
MARKSCOMMERCIAL.COM





STYLE: 968-01

SIZES: 6-11.5

CSA GRADE 1 COMPOSITE TOE, COMPOSITE PLATE. ESR.

6" LEATHER PULL-ON CTCP WORK BOOT

- Slip-resistant rubber outsole. CSA approved grade 1 protective toe cap.
- Highly resistant to hydrolysis and microbial attack.
- Heat resistant to 300 °C.
- Oil, acid and organic fat resistant sole. Molded TPU toe guard.
- Premium weatherproof leather upper and elastic sided boot.
- Luxury removable Comfort Arch footbed with XRD® Technology for greater impact absorption and cushioning support for all-day comfort. Footbed is anti-bacterial, washable and breathable.
- Nylon shank ensures correct step flex point, assists with torsional stability.
- Extreme puncture protection that is metal-free and lightweight.



ONLY AVAILABLE ONLINE AT:
MARKSCOMMERCIAL.COM



STYLE: 960-02

SIZES: 6-11.5

CSA GRADE 1 STEEL TOE, STEEL PLATE. ESR.

Blundstone CSA-Approved 960 Work & Safety XFR in Wheat stands on a thicker, solid rubber lug sole for safe, long-wearing, comfort and stability. This unisex Blundstone Work and Safety boot has Comfort Arch footbeds reduce stress on bones and joints, cushioning heel-strike impact by up to 90%. Tough-as-nails rubber toe caps protect the boot itself and extend service life. Step up to comfort and safety that won't let you down.

6" LEATHER PULL-ON CTCP WORK BOOT

- Rubber outsole provides slip-resistance through a combination of design, tread pattern and sole material.
- Highly resistant to hydrolysis and microbial attack.
- Heat resistant to 300 °C.
- Oil, acid and organic fat resistant sole.
- Premium weatherproof leather upper and elastic sided boot.
- Molded TPU toe guard for added protection.
- Luxury removable Comfort Arch footbed with XRD® Technology for greater impact absorption and cushioning support for all-day comfort.
- Footbed is anti-bacterial, washable and breathable.
- Nylon shank ensures correct step flex point, assists with torsional stability.
- Extreme puncture protection that is metal-free, lightweight and flexible offering optimum penetration resistance
- Electrical shock resistant sole.
- CSA approved grade 1 protective toe cap.



ONLY AVAILABLE ONLINE AT:
MARKSCOMMERCIAL.COM





WOMEN'S

HIKER

FOOTWEAR



AGGRESSOR

STYLE: 5BOCAG9-2501
SIZES: 5-11
CSA GRADE 1 STEEL TOE, STEEL PLATE. ESR.

WOMEN'S STSP LOW-CUT SAFETY HIKER

- Textile & polyurethane upper.
- DRI-TEC with FRESHTECH® treated lining.
- Removable EVA footbed.
- EVA midsole.

EXCLUSIVELY AT
Mark's



AGGRESSOR

STYLE: 5BOCAG9-2502
SIZES: 5-11
CSA GRADE 1 STEEL TOE, STEEL PLATE. ESR.

WOMEN'S STSP MID-CUT SAFETY HIKER

- Textile & polyurethane upper.
- DRI-TEC with FRESHTECH® treated lining.
- Removable EVA footbed.
- EVA midsole.

EXCLUSIVELY AT
Mark's



DAKOTA
WORKPRO SERIES

STYLE: 5BOCDK0-2007
SIZES: 6-10
CSA GRADE 1 ALUMINUM TOE, COMPOSITE PLATE. ESR.

WOMEN'S ATCP MID-CUT SAFETY HIKER

- Synthetic & breathable mesh upper.
- Breathable mesh lining.
- QUAD COMFORT®, a better way to walk.
- EVA Midsole.
- Removable footbed.
- TARANTULA® ANTI-SLIP rubber outsole, engineered to help prevent slips and falls.

EXCLUSIVELY AT
Mark's





DAKOTA

WORKPRO SERIES

STYLE: 5BOCDK0-2003

SIZES: 5-11

CSA GRADE 1 ALUMINUM TOE, COMPOSITE PLATE. ESR.

WOMEN'S ATCP LOW-CUT APPROACH HIKER

- Synthetic & breathable mesh upper.
- Breathable mesh lining.
- QUAD COMFORT®, a better way to walk.
- EVA Midsole.
- Removable footbed.
- TARANTULA® ANTI-SLIP rubber outsole, engineered to help prevent slips and falls.

EXCLUSIVELY AT

Mark's



DAKOTA

WORKPRO SERIES

STYLE: 5BOCDK8-2120

SIZES: 5,6-11

CSA GRADE 1 STEEL TOE, COMPOSITE PLATE. ESR.

Offering steel toes and composite plates, these genuine suede safety boots are waterproof and breathable for all-weather comfort. They also feature breathable mesh linings along with our FRESHTECH® Odour protection technology for all day freshness. The Dakota 2120 women's work boots have Tarantula Anti-Slip™ rubber outsoles that are designed to help prevent slips and falls.

WOMEN'S "2120" STCP WATERPROOF SAFETY HIKER

- Waterproof leather upper.
- HYPER-DRI® HD3 waterproof, breathable membrane
- Breathable, moisture wicking DRI-TEC lining.
- QUAD COMFORT®, a better way to walk.
- Cushioning PU Midsole.
- Removable EVA Footbed.
- TARANTULA® ANTI-SLIP rubber outsole, engineered to help prevent slips and falls.

EXCLUSIVELY AT

Mark's



KODIAK®

STYLE: 305003DW

SIZES: 6-10

CSA GRADE 1 COMPOSITE TOE, COMPOSITE PLATE. ESR.

From Kodiak, the women's Journey hiker-style work boots are made of waterproof leather, protected with molded TPU heel guards and rubber toe guards. Fitted with composite toes and plates, they are electric shock resistant as well as puncture resistant. Designed for winter outdoor work, the boots have lightweight Thinsulate™ insulation. EVA midsoles add support and Kodiak® Ultimate rubber outsoles are slip and oil resistant. CSA-compliant safety features include composite toes and plates, electric shock resistance and puncture resistance.

WOMEN'S "JOURNEY" CTCP WATERPROOF HIKER

- Full grain waterproof leather upper.
- Waterproof breathable membrane.
- Breathable mesh lining.
- 200g Thinsulate™ insulation.
- Oil & slip resistant, non-marking rubber outsole.
- Removable, shock-absorbing polyurethane Footbed.
- EVA Midsole.
- ROCKFIBRE® Metal free technology.



STYLE: J006128

SIZES: 5-11

CSA GRADE 1 COMPOSITE TOE, COMPOSITE PLATE. ESR.

WOMEN'S "ANTORA" CTCP WATERPROOF HIKER

- Breathable mesh and TPU Upper.
- Waterproof breathable membrane.
- Breathable mesh lining.
- Merrell M Select™ GRIP oil & slip resistant rubber outsole.
- Removable COMFORTBASE™ contoured footbed.
- COMFORTBASE™ rubberized EVA midsole for increased shock absorption and cushion.

NEW!





WOMEN'S

ATHLETIC FOOTWEAR



AGGRESSOR

STYLE: 5BODAG9-1501

SIZES: 5-11

CSA GRADE 1 STEEL TOE, STEEL PLATE. ESR.

WOMEN'S STSP ATHLETIC SAFETY SHOE

- Textile upper.
- DRI-TEC with FRESHTECH® treated lining.
- Removable EVA footbed.
- EVA midsole.

EXCLUSIVELY AT

Mark's



DAKOTA

WORKPRO SERIES

STYLE: 5BODDK8-1007

SIZES: 5-11

CSA GRADE 1 STEEL TOE, STEEL PLATE. ESR.

WOMEN'S LIGHTWEIGHT CANVAS STSP SAFETY SHOE

- Canvas upper
- Breathable mesh lining with FRESHTECH®.
- EVA midsole.
- Removable comfort footbed.
- Rubber outsole.

EXCLUSIVELY AT

Mark's



DAKOTA

WORKPRO SERIES

STYLE: 5BODDK9-1008

SIZES: 5-11

CSA GRADE 1 STEEL TOE, STEEL PLATE. ESR.

WOMEN'S LIGHTWEIGHT CANVAS STSP SLIP-ON SHOE

- Canvas upper
- Breathable mesh lining with FRESHTECH®.
- EVA midsole.
- Removable comfort footbed.
- Rubber outsole.

EXCLUSIVELY AT

Mark's





DAKOTA

WORKPRO SERIES

STYLE: 5BODDK9-1009

SIZES: 5-11

CSA GRADE 1 STEEL TOE, STEEL PLATE. ESR.

WOMEN'S LIGHTWEIGHT STSP CANVAS LACE-UP SHOE

- Canvas upper.
- Breathable mesh lining with FRESHTECH®.
- EVA midsole.
- Removable comfort footbed.
- Rubber outsole.

EXCLUSIVELY AT

Mark's



DAKOTA

WORKPRO SERIES

STYLE: 5BODDK7-3602

SIZES: 6-10,11

CSA GRADE 1 ALUMINUM TOE, STEEL PLATE. ESR.

Our Dakota athletic-style safety shoes are made of microfiber and mesh with nylon linings for breathability. They are equipped with our Quad Comfort® Lite technology that offers all the comfort of our regular version with less weight. These women's safety shoes have aluminum toes and composite plates, and they are electric shock resistant. Insoles are removable in favour of your own orthotics and Tarantula Anti-Slip™ outsoles help to prevent slips and falls.

WOMEN'S ATSP QUAD COMFORT® LITE ATHLETIC SHOE

- Mesh upper with welded TPU.
- Breathable mesh lining with FRESHTECH®.
- QUAD COMFORT®, a better way to walk.
- Injected EVA midsole.
- Removable EVA Footbed.
- TARANTULA® ANTI-SLIP rubber outsole, engineered to help prevent slips and falls.

EXCLUSIVELY AT

Mark's





STYLE: HHS201006W
SIZES: 6-10
 CSA GRADE 1 ALUMINUM TOE, STEEL PLATE. ESR.

WOMEN'S ATSP ATHLETIC SAFETY SHOE

- Lightweight breathable mesh and polyurethane upper.
- Reinforced PU welded toe and heel for additional protection.
- Removable moisture wicking Ortholite® footbed.
- HELLYGRIP™ Rubber Outsole.

EXCLUSIVELY AT
Mark's



STYLE: P310493
SIZES: 5-10
 CSA GRADE 1 STEEL TOE, STEEL PLATE. ESR.

WOMEN'S "WOODWARD" STSP ATHLETIC SHOE

- Leather upper with nylon mesh inserts.
- Nylon mesh lining for added breathability and comfort.
- Oil, slip, abrasion resistant rubber outsole.
- Removable ease footbed.
- Molded EVA midsole.



STYLE: P725770
SIZES: 5-10,11
 CSA GRADE 1 COMPOSITE TOE, COMPOSITE PLATE. ESR.

WOMEN'S "STREAMLINE" CTCP ATHLETIC SHOE

- Nylon mesh, polyurethane coated suede.
- Breathable nylon mesh lining.
- ReVive footbed is built with engineered comfort for a contoured fit and support underfoot.
- Slip-resistant, industrial grade rubber outsole.
- Metal free.

NEW!





STYLE: TB0A5SSU236

SIZES: 5.5-10,11

CSA GRADE 1 ALUMINUM TOE, COMPOSITE PLATE. ESR.

WOMEN'S "SETRA" CTCP LOW ATHLETIC SAFETY SHOE

- Durable, breathable mesh upper with abrasion resistant reinforcements.
- Re-BOTL breathable, antimicrobial and moisture wicking lining.
- Removable anti-fatigue footbed.
- EVA midsole.
- Timberland PRO® Flex Technology sole with positioned flex grooves.
- Metal free.

EXCLUSIVELY AT

Mark's



STYLE: TB0A5PVT001

SIZES: 5.5-10,11

CSA GRADE 1 COMPOSITE TOE, COMPOSITE PLATE. ESR.

WOMEN'S "SETRA" CTCP MID ATHLETIC SAFETY SHOE

- Durable, breathable mesh upper with abrasion resistant reinforcements.
- Re-BOTL breathable, antimicrobial and moisture wicking lining.
- Removable anti-fatigue footbed.
- EVA midsole.
- Timberland PRO® Flex Technology sole with positioned flex grooves.
- Metal free.

EXCLUSIVELY AT

Mark's



KODIAK®

STYLE: 308004BLK

SIZES: 5,6-10

CSA GRADE 1 STEEL TOE, COMPOSITE PLATE. ESR.

WOMEN'S "TAJA" STCP LACE-UP SAFETY SHOE

- Stretchable PU coated leather upper.
- Stretch nylon comfort lining with reinforced microfiber heel counter lining.
- Removable, breathable Ortholite® footbed.
- Lightweight EVA flexible midsole.
- KODIAK® ultimate slip & oil resistant rubber outsole.





KODIAK®

STYLE: 308005BLK

SIZES: 5,6-10

CSA GRADE 1 STEEL TOE, COMPOSITE PLATE. ESR.

WOMEN'S "BRITT" STCP SLIP-ON SAFETY SHOE

- Stretchable PU coated leather upper.
- Stretch nylon comfort lining with reinforced microfiber heel counter lining.
- Removable, breathable Ortholite® footbed.
- Lightweight EVA flexible midsole.
- KODIAK® ultimate slip & oil resistant rubber outsole.



KODIAK®

STYLE: KD0A4TGXBLK

SIZES: 5-10,11

CSA GRADE 1 COMPOSITE TOE, COMPOSITE PLATE. ESR.

WOMEN'S "QUICKTRAIL NT" CTCP ATHLETIC SAFETY SHOE

- Ultralight, abrasion-resistant polyester upper from 50% recycled plastic.
- Oil & slip resistant, non-marking cleated rubber outsole.
- Scuff resistant toe protector and heel guard.
- KODIAK® SOS odor control treated lining.
- Removable Ortholite® footbed.
- EVA midsole.
- ROCKFIBRE® metal free technology.



KEEN®

STYLE: 1025244

SIZES: 5-10,11

CSA GRADE 1 COMPOSITE TOE, COMPOSITE PLATE. ESR.

WOMEN'S "VISTA ENERGY" CTCP ATHLETIC SAFETY SHOE

- Mesh & synthetic upper.
- Breathable mesh lining.
- Removable PU footbed.
- KEEN.ReGen® multi-density midsole.
- Heat, oil & slip resistant, non-marking rubber outsole
- Metal Free.





Reebok

STYLE: IBO46

SIZES: 6-10,11

CSA GRADE 1 COMPOSITE TOE, COMPOSITE PLATE. ESR.

WOMEN'S "SUBLITE CUSHION" CTCP ATHLETIC SAFETY SHOE

- Microfibre & mesh upper.
- Moisture wicking nylon mesh lining.
- Removable MemoryTech footbed.
- EVA midsole.
- Slip resistant rubber outsole.
- Metal free.

NEW!



Reebok

STYLE: IB314

SIZES: 6-10,11,12

CSA GRADE 1 COMPOSITE TOE, COMPOSITE PLATE. ESR.

With a Floatride Energy foam midsole, the Reebok Fusion Flexweave™ Work Shoes provide cushioning with a kick. Floatride Energy foam is supportive, highly responsive and lighter than traditional EVA. The Flexweave™ fabric delivers flexible support, lightweight durability and breathable strength, allowing you to put more muscle into every task. The slip-resistant rubber outsoles provide adaptive, multi-dimensional flexibility.

WOMEN'S "FUSION FLEXWEAVE" CTCP ATHLETIC SAFETY SHOE

- Ultraknit and Flexweave™ upper.
- Moisture wicking nylon mesh lining.
- Removable EVA footbed.
- Floatride Energy foam lightweight midsole.
- Slip resistant rubber outsole.
- Metal free.

NEW!





STYLE: 5BODWM2-102
SIZES: 5-11 (Full sizes only)
NON-SAFETY.

WOMEN'S DIABETIC NON-SAFETY SHOE

- Waterproof leather upper.
- Non-removable polyurethane footbed.
- Polyurethane midsole with TPU bottom insert.
- Microfiber suede lining with antimicrobial treatment and 2mm polyurethane foam.



STYLE: 5BODWM2-103
SIZES: 5-11 (Full sizes only)
NON-SAFETY.

WOMEN'S DIABETIC NON-SAFETY SHOE

- Waterproof leather upper.
- Non-removable polyurethane footbed.
- Polyurethane midsole with TPU bottom insert.
- Microfiber suede lining with antimicrobial treatment and 2mm polyurethane foam.



STYLE: 5BODWM2-104
SIZES: 5-11 (Full sizes only)
NON-SAFETY.

WOMEN'S DIABETIC NON-SAFETY SHOE

- Waterproof leather upper.
- Non-removable polyurethane footbed.
- Polyurethane midsole with TPU bottom insert.
- Microfiber suede lining with antimicrobial treatment and 2mm polyurethane foam.



WOMEN'S

ANTI-SLIP

FOOTWEAR



STYLE: 5BODAG2-3400
SIZES: 5-11
 NON-SAFETY.

WOMEN'S NON-SAFETY ANTI-SLIP, LACE-UP SKATE SHOE

- Synthetic upper.
- DRI-TEC lining with FRESHTECH®.
- Removable EVA footbed.
- Slip resistant rubber outsole.



STYLE: 5BODAG2-3401
SIZES: 5-11
 NON-SAFETY.

WOMEN'S NON SAFETY ANTI-SLIP, SLIP-ON SHOE

- Microfiber and polyurethane upper.
- DRI-TEC lining with FRESHTECH®.
- Removable EVA footbed.
- Slip resistant rubber outsole.



STYLE: 5BODDK0-3108
SIZES: 5-11
 NON-SAFETY.

WOMEN'S NON SAFETY ANTI-SLIP, SLIP-ON SHOE

- Microfiber and polyurethane upper.
- Breathable mesh lining with FRESHTECH®.
- QUAD COMFORT®, a better way to walk.
- Cushioning EVA Midsole.
- Removable EVA Footbed.
- TARANTULA® ANTI-SLIP rubber outsole, engineered to help prevent slips and falls.

EXCLUSIVELY AT
Mark's





DAKOTA

WORKPRO SERIES

STYLE: 5BODDK0-3106

SIZES: 5-11

NON-SAFETY.

WOMEN'S NON SAFETY ANTI-SLIP, LACE-UP SHOE

- Microfiber and polyurethane upper.
- Breathable mesh lining with FRESHTECH®.
- QUAD COMFORT®, a better way to walk.
- Cushioning EVA Midsole.
- Removable EVA Footbed.
- TARANTULA® ANTI-SLIP rubber outsole, engineered to help prevent slips and falls.

EXCLUSIVELY AT

Mark's



DAKOTA

WORKPRO SERIES

STYLE: 5BODDK3-3109

SIZES: 5-11

NON-SAFETY.

WOMEN'S NON SAFETY ANTI-SLIP ATHLETIC SHOE

- TPU and mesh upper.
- DRI-TEC lining with FRESHTECH®.
- Removable EVA Footbed.
- EVA midsole.
- TARANTULA® ANTI-SLIP rubber outsole, engineered to help prevent slips and falls.

EXCLUSIVELY AT

Mark's



NEW!



DAKOTA

WORKPRO SERIES

STYLE: 5BODDK0-3105

SIZES: 5-11

NON-SAFETY.

WOMEN'S STSP ANTI-SLIP LACE-UP OXFORD SHOE

- Microfiber and polyurethane upper.
- Breathable mesh lining with FRESHTECH®.
- QUAD COMFORT®, a better way to walk.
- Cushioning EVA Midsole.
- Removable EVA Footbed.
- TARANTULA® ANTI-SLIP rubber outsole, engineered to help prevent slips and falls.

EXCLUSIVELY AT

Mark's





DAIKOTA

WORKPRO SERIES

STYLE: 5BODDK0-3107

SIZES: 5-11

CSA GRADE 1 STEEL TOE, STEEL PLATE. ESR.

WOMEN'S STSP ANTI-SLIP SLIP-ON SHOE

- Microfiber and polyurethane upper.
- Breathable mesh lining with FRESHTECH®.
- QUAD COMFORT®, a better way to walk.
- Cushioning EVA Midsole.
- Removable EVA Footbed.
- TARANTULA® ANTI-SLIP rubber outsole, engineered to help prevent slips and falls.

EXCLUSIVELY AT

Mark's



SKECHERS

STYLE: 77210

SIZES: 5-10,11,12

NON-SAFETY.

WOMEN'S "GHENTER" RELAXED FIT SLIP RESISTANT SHOE

- Treated with 3M™ Scotchgard™ to resist water and stains.
- Relaxed Fit® for a roomy comfort fit at toe and forefoot.
- Durable airy mesh and synthetic upper.
- Slip-resistant traction outsole with oil resistance.



SKECHERS

STYLE: 76551

SIZES: 5-10,11,12

NON-SAFETY.

WOMEN'S "ELDRED" SLIP RESISTANT LACE-UP SHOE

- Smooth leather upper with cooling mesh fabric collar and heel panel.
- Soft fabric lining.
- Removable Skechers Memory Foam™ footbed.
- EVA Midsole.
- Oil & slip resistant rubber outsole.
- Relaxed Fit® design for a roomy comfortable fit.





WOMEN'S

**STATIC
DISSIPATIVE**
FOOTWEAR



STYLE: TB0A2A63001

SIZES: 5-10,11

CSA GRADE 1 COMPOSITE TOE, COMPOSITE PLATE. ESR.

WOMEN'S "RADIUS" SD+ CTCP ATHLETIC SHOE

- Durable, breathable mesh upper with abrasion resistant reinforcements.
- Re-BOTL breathable, antimicrobial and moisture wicking lining.
- Static Dissipative.
- Timberland PRO® oil, slip, abrasion resistant non-marking flexible rubber outsole.
- Removable anti-fatigue technology footbed.
- Hoverspring midsole.



STYLE: IB492

SIZES: 6-10,11,12

CSA GRADE 1 COMPOSITE TOE, COMPOSITE PLATE. ESR.

Sublite Cushion Work achieves maximum lightness and flexibility in a work shoe. With deep flex grooves, the Sublite foam midsole reduces weight and allows for greater range of motion. Rubber pads provide traction at heel strike and forefoot takeoff while minimizing weight. EXOFUSE upper for lightweight flexibility and water resistance. A MemoryTech Massage footbed adapts to the unique contours of your foot.

WOMEN'S "SUBLITE CUSHION" CTCP SD ATHLETIC SAFETY SHOE

- Ultraknit and Flexweave™ upper.
- Moisture wicking nylon mesh lining.
- Removable EVA footbed.
- Floatride Energy foam lightweight midsole.
- Slip resistant rubber outsole.
- Metal free.





WOMEN'S

WET WEATHER FOOTWEAR



AGGRESSOR

STYLE: 5BOEAG8-9601
SIZES: 6-10 Full Sizes Only
 NON-SAFETY.

WOMEN'S NST INSULATED WET WEATHER BOOT

- Waterproof molded TPO upper.
- Wool blend liner is tested to a Comfort Rating -20°C to -30°C.
- Long wearing, self cleaning outsole.

EXCLUSIVELY AT
Mark's



AGGRESSOR

STYLE: 5BOEAG4-9500
SIZES: 6-10 Full Sizes Only
 CSA GRADE 1 STEEL TOE, STEEL PLATE. ESR.

Designed with adjustable cuffs that shed snow and debris, these rubber boots come with insulated wool felt liners keeping your feet warm and dry in colder environments. The rubber TPO injected construction offers long-term protection in cooler and wet environments. Finished with durable rubber outsoles, these boots have multi-directional traction treads for added traction.

WOMEN'S INSULATED STSP WET WEATHER BOOT

- Waterproof molded TPO upper.
- Wool blend liner is tested to a Comfort Rating -20°C to -30°C.
- Long wearing, self cleaning outsole.

EXCLUSIVELY AT
Mark's





STYLE: HHF236113W
SIZES: 5-10 Full Sizes Only
 CSA GRADE 1 STEEL TOE, STEEL PLATE. ESR.

WOMEN'S POLYURETHANE STSP WET WEATHER BOOT

- Oil resistant polyurethane upper.
- Nylon lining.
- Removable polyurethane footbed.
- HELLYGRIP™ rubber outsole.

EXCLUSIVELY AT
Mark's

NEW!



STYLE: HHF216113W
SIZES: 5-10 Full Sizes Only
 CSA GRADE 1 STEEL TOE, STEEL PLATE. ESR.

Keep your feet safe and dry in these Helly Hansen work boots. With steel toes and plates, they have injection-molded shells to keep water on the outside. Ideal for use in wet weather or wet environments.

WOMEN'S POLYURETHANE STSP WET WEATHER BOOT

- Oil resistant polyurethane upper.
- Nylon lining.
- Removable polyurethane footbed.
- HELLYGRIP™ rubber outsole.

EXCLUSIVELY AT
Mark's





WOMEN'S

WINTER FOOTWEAR



DAKOTA

WORKPRO SERIES

STYLE: 5BOFDK8-8905

SIZES: 6-10 Full Sizes Only

CSA GRADE 1 COMPOSITE TOE, COMPOSITE PLATE. ESR.

WOMEN'S "8905" CTCP TRANSITIONAL WINTER BOOT

- Waterproof full grain leather upper.
- HYPER-DRI® HD3 waterproof/breathable membrane.
- Mesh lining with 400g T-MAX® insulation.
- QUAD COMFORT®, a better way to walk.
- Removable EVA footbed
- ICEFX® rubber outsole
- Comfort Rating -30°C to -40°C.

EXCLUSIVELY AT

Mark's



DAKOTA

WORKPRO SERIES

STYLE: 5BOFDK7-8520

SIZES: 6-10 Full Sizes Only

CSA GRADE 1 COMPOSITE TOE, COMPOSITE PLATE. ESR.

WOMEN'S CTCP FELT PACK WINTER BOOT

- Synthetic polyurethane Nubuck upper.
- Lightweight EVA shell.
- Removable liner system.
- 400g T-MAX® Insulation.
- QUAD COMFORT®, a better way to walk.
- Removable EVA footbed
- ICEFX® rubber outsole.

EXCLUSIVELY AT

Mark's



DAKOTA

WORKPRO SERIES

STYLE: 5BOF-LNR-8520

SIZES: 6-10 Full Sizes Only

WOMEN'S "8520" WINTER BOOT LINER

- Mesh upper.
- 400g T-MAX® insulation.
- Velvet lining.



It's a tough job. *What keeps you going?*

Leo worked for moments like this... *you* work so your employees can have more moments like this.



Leo was a big strong man with a booming voice, but he didn't hesitate to push his daughter's stroller through the park or get on the floor to play cars with his son. To provide for his family, he worked for a paving company.

The family lost its cornerstone the day Leo didn't come home from work.

Learn more about Leo's family at threadsoflife.ca/erin/

We care as much about health and safety as you do. We support families like Leo's after the worst happens: an on-the-job fatality, serious injury or occupational disease.

You can help turn workplace tragedy into hope:

Spread the word — Build Threads of Life into your emergency response and EAP programs. Let those who need help know where to find it: www.threadsoflife.ca.

Get involved — Our members share their stories to help prevent future tragedy. Book a Threads of Life speaker for your health and safety day: www.threadsoflife.ca/speakers.

Designate and donate — Make Threads of Life your company's Charity of Choice. Your company's contributions will directly support Canadian families affected by workplace fatalities, life-altering injuries and occupational disease — visit www.threadsoflife.ca/donate



Association for Workplace Tragedy Family Support

Helping you prevent workplace tragedy. Helping victims of tragedy heal.



FOOTWEAR **INFORMATION**

TARANTULA ANTISLIP® footwear. The ultimate in slip protection.

TARANTULA ANTISLIP®

Our TARANTULA ANTISLIP® outsoles provide the ultimate in slip protection by reducing the likelihood that you'll slip or fall on wet and/or greasy surfaces. To achieve this high performance, the outsoles use a unique tread pattern and advanced soft rubber compounds to increase the coefficient of friction (CoF). The higher the CoF value, the better the slip resistance. Many other shoe outsoles hydroplane on wet surfaces, resulting in poor traction for the wearer. TARANTULA ANTISLIP® outsoles, however, push liquids to the outside using unique micro channels instead of keeping liquids underfoot.

Disclaimer: TARANTULA ANTISLIP® footwear have been tested for wet and dry conditions. They have not been tested for use on any type of ice.

INDEPENDENTLY TESTED FOR SLIP RESISTANCE

TARANTULA ANTISLIP® footwear are all tested at SATRA Technology Centre Ltd. in accordance to test methods SATRA TM144 or ISO 13287. SATRA TM144 is a widely accepted slip resistance test



method in the footwear industry and formed the basis of the European Standard EN ISO 13287. There are slight differences between the two methods, but the basic mechanics are virtually the same and we accept both slip resistance test methods.

TESTING BEYOND THE STANDARDS

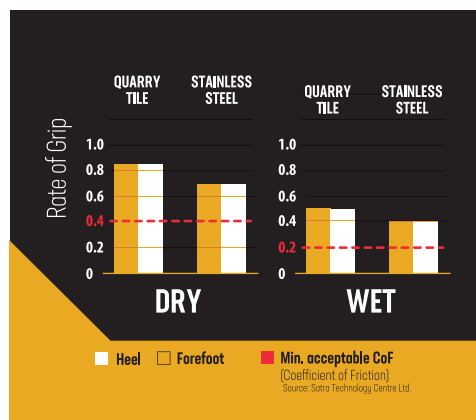
The Canadian Standards Association (CSA) Standard Z195 – Protective Footwear list method ISO 13287 for slip resistance testing. However, currently there are no specified minimum coefficient of friction

(CoF) requirements. To ensure that our line of TARANTULA ANTISLIP® footwear meet a standard level of performance, we developed our own internal standards that must be achieved to qualify as anti-slip footwear. Furthermore, we test all our anti-slip footwear on a yearly basis to ensure that every production meets our performance requirements.

To see more details on how a style performed, please refer to the hangtag attached to the TARANTULA ANTISLIP® footwear style.

The below chart is our TARANTULA ANTISLIP® standard that we hold ourselves to:

Surface Conditions	TARANTULA ANTISLIP® CoF Requirements
Dry Quarry Tile	Heel CoF ≥ 0.85
	Forefoot CoF ≥ 0.85
Wet Quarry Tile	Heel CoF ≥ 0.50
	Forefoot CoF ≥ 0.50
Dry Stainless Steel	Heel CoF ≥ 0.70
	Forefoot CoF ≥ 0.70
Wet Stainless Steel	Heel CoF ≥ 0.40
	Forefoot CoF ≥ 0.40



Example of CoF results found on the hangtags attached to our TARANTULA ANTISLIP® safety footwear.

DAKOTA

WORKPRO SERIES

footwear with TARANTULA ANTISLIP® outsoles are exclusive to Mark's and Mark's Commercial.



To reduce the likelihood
of slipping and falling
this winter
we suggest wearing...

ICEFX®

ICELANDIC GRIP®
Abrasive fibre-like
material designed
to grip on wet ice.

ICEFX®

Leading-edge technology features an innovative tread design to provide greater surface contact in the heel strike zone and forefoot to achieve an anti-slip outsole. The outsole uses a softer, more flexible rubber compound that performs in the cold and incorporates gripping pods to provide advanced traction. ICEFX® may also utilize other compounds or materials in the outsole to help achieve slip resistance on ice. Constant research is explored to search for new and better materials to provide a "Safer Way to Walk on Ice".

DISCLAIMER: ICEFX® provides enhanced traction on ice but does not guarantee slips will not occur under any circumstances. Care should always be taken when walking on ice.

GREEN DIAMOND® grip

Synthetic quartz
embedded into the
rubber for effective grip
on all ice surfaces.

Mark's
COMMERCIAL

How to find the perfect fitting work boot.

1. Have your feet measured.

Your foot size and shape can change over time. So don't rely on the fact that you have always worn a certain size. That size likely is no longer the best fit for you. Most people have one foot that is larger than the other, so make sure you have BOTH feet measured. Fit your shoes to the larger foot. Get measured at the end of the day when your feet are the largest. When you are up during the day, your feet will swell and settle some. You want to make sure you are comfortable throughout the day and not just when you head out of the house in the morning. Since you will be working in these shoes and most likely on your feet the majority of time you wear them, it is necessary to closely represent work-like conditions to ensure they are truly comfortable.

2. Different Brands, Different Sizes

Just like clothes, the size marked inside the shoe may be different depending on the brand. So your shoe size is a just a starting point in selecting the correct shoe. Try on different sizes from multiple brands to make certain you choose the best safety shoe for the job.

3. Lace them up

You should be sure to tie your prospective shoes as if you were going to work. You wouldn't wear your shoes untied on the job, would you? Simulate your work environment as close as possible, testing the shoes for grip and protection - with them laced, of course.

4. Do you wear socks?

Wear the exact socks you wear on the jobsite to the shoe store. Wearing socks that are too thin will make your feet feel squished when you wear your regular socks at work. If you wear socks that are thicker than the ones you wear to work, then your foot will slide around on the jobsite, leading to blisters and other health risks.

5. You won't fit into them over time

Don't plan on shoes stretching over time; they should fit well when you buy them. It's like buying clothes that are too small and hoping that you will lose weight and then they will fit. That rarely happens.

6. Look for comfort

The ball of your foot (the widest part just before your toes begin) should fit comfortably in the widest part of the shoe. The shoe should also have enough depth to fit your toes, especially if you have hammertoes or other conditions. Shoes with too small of a toe box will cause rubbing and you will get calluses or sores.

7. Wiggle Room

With any pair of shoes, it is recommended that you are able to fit your index finger between the heel of your foot and the heel of the shoe, as well as the top of your foot and the tongue of the shoe. This test ensures that you have proper "wiggle room" to comfortably move throughout your work day.

8. Walk Around

Always stand and walk around in the shoes to see if they are comfortable, fit well, and don't chafe or rub anywhere. Your heel should not slip or slide while walking. Find out in the store if they are a good fit and not on the job site.

Now That You're Wearing Them

Rotate Your Footwear

Most workers buy a pair of boots and wear them till they're worn out. Boots (and shoes) last much longer if they are rotated in use. Alternating 2 pairs gives each one a chance to completely dry out between uses. Your boots will last longer and your feet will be more comfortable.

Maintain Your Boots

All boots will last longer and be more comfortable if they are well taken care of: **Dry Your Boots** - Allow your boots to dry after a long day on the job. Boots like to air dry without excessive heat. Never subject your boots to more heat than your hand can stand. Remove insoles to speed drying. If your boots get soaked, fill them with wads of newspaper. It will draw out the moisture from within.

Keep Them Clean

Remove mud to keep the leather from drying out. A stiff brush works well and avoids getting your boots wet. Remove salt with a mild solution of vinegar and water.

Leather Boots Like Conditioner

Waterproof leathers do not need the same level of conditioning as regular leathers but all leathers benefit from conditioner. Boots should be clean and dry before applying conditioner. Oil-based treatments will soften the leather. Silicone- or PTFE- based treatments add waterproofing without softening the leather.



Four Basic Footwear Components

UPPER

This area of the boot is usually made up from different leathers or a combination of materials and special fabrics. These can include:

Full Grain Leather

Full-grain leather is made from the whole hide of the animal. The hide of an animal is strongest and most durable just below the hair. Once the hair is removed during processing, the natural grain pattern is visible. The leather made with this part of the hide is called full-grain leather, and because the grain is tighter at this layer, it resists moisture very well. Full-grain leather incorporates the entire grain of the hide with all the imperfections and inherent toughness of the material.

Nubuck Leather

Nubuck is simply sanded or buffed leather, giving it a velvet-like surface. While visually it may be confused with Suede, which is produced from the lower part of the skin (splits), Nubuck comes from the top part (full grain), making it more robust and durable than suede.

Buffalo Leather

Buffalo leather (also referred to as English Saddle leather) is the tanned hide of one of the 74 species of domestic Buffalo. It has a more distinctive grain than bovine leather and comes in many colours and finishes, characterised by rich, deep tones that give it a striking appearance.

Suede

Suede is really a type of split leather – in fact, it's the innermost layer of the hide. Most commonly, it comes from sheep,

but also from deer, goats and calves. Thicker hides have the same feel but become shaggier, rather than the preferred napped feel. The thin innermost layer is cut off to create a thin, soft material. Technically, this layer doesn't have to be cut off; however, that would leave a thick, less pliable leather which usually isn't preferred for suede products.

Action Leather

Action leather is suede cow leather that is covered with a thin coating of Polyurethane. The coating can be any color and can be embossed with a roller. The final product is generally a solid color leather looking product. This material is still classified as leather for import duty.



FOOTBED / INSOLE

The footbed is the inside part of the shoe that runs under the bottom of the foot and is more commonly referred to as the insole. It may have layers of construction and structural elements added for better fit and comfort and may have a removable sock liner.

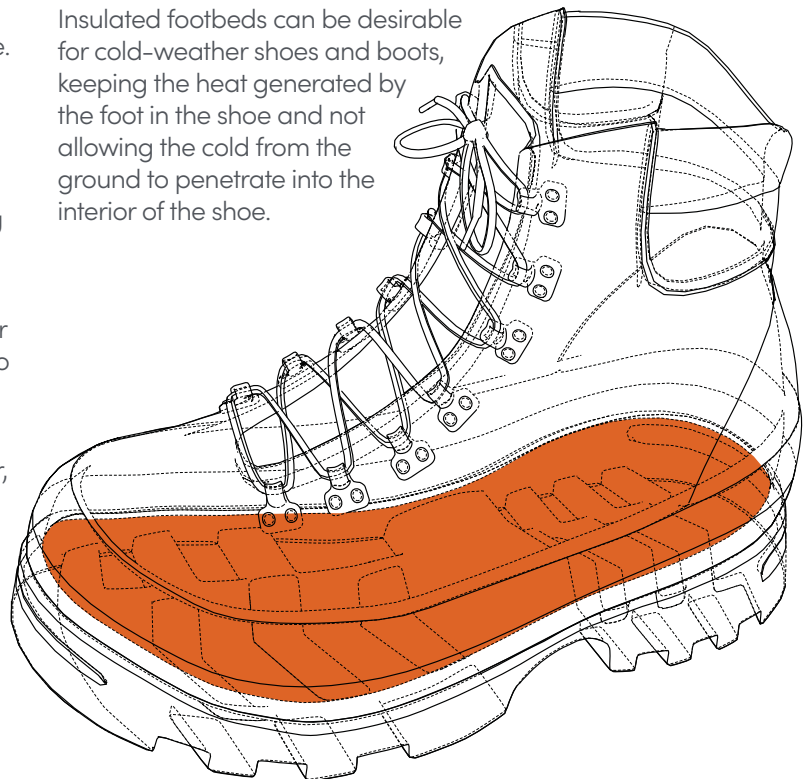
Shoes have been further developed to have contoured footbeds that may provide cushioning and support for different areas of the foot. They may have structural arch supports built in, cushioning for the heel, and be shaped to cradle the foot.

Ethylene vinyl acetate (EVA) foam is a shock-absorbing element that was initially seen in athletic shoes but is now also common for footbeds of all types of footwear. It can be compression molded to specific shapes as desired. It can be made with recycled materials or blended with other materials such as cork.

Natural materials used for footbeds include cellulose, latex rubber, jute, bamboo, cork, and leather. Some shoe manufacturers add anti-microbial elements to their footbeds. These help keep the

shoes fresh and prevent foot odor by inhibiting the growth of bacteria that produce the unwanted smell.

Insulated footbeds can be desirable for cold-weather shoes and boots, keeping the heat generated by the foot in the shoe and not allowing the cold from the ground to penetrate into the interior of the shoe.



Four Basic Footwear Components

MIDSOLE

Sandwiched between the outsole and the upper, the midsole is one of the most important components of any boot, and one you should watch out for. A well thought out midsole can provide ample shock absorption, flex support and added cushioning.

POPULAR MIDSOLE COMPOUNDS

PU (Polyurethane)

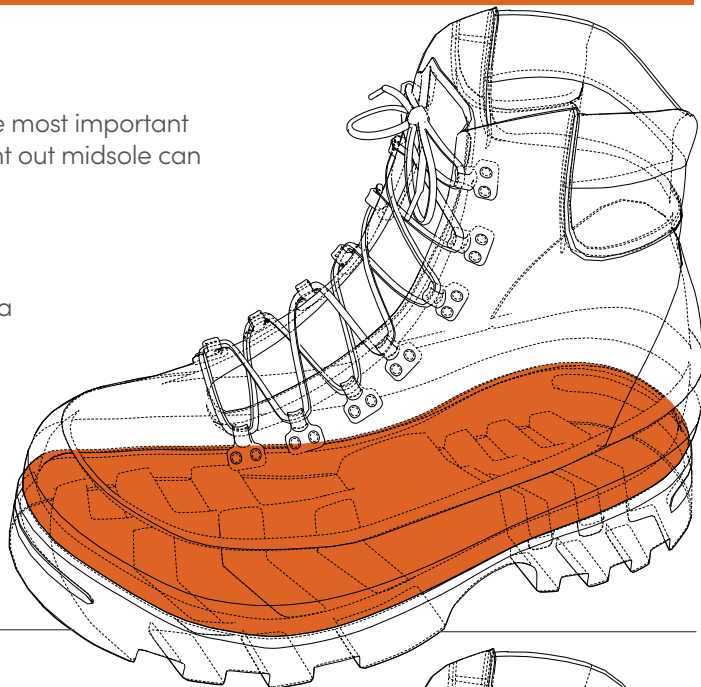
More durable but heavier than EVA. Great resistance to chemicals and has a better lifespan and shock absorption.

EVA (Ethylene Vinyl Acetate)

Super lightweight and flexible compound. It can breakdown when exposed to chemicals and will compress overtime.

Rubber sponge

A durable compound that maintains its cushioning abilities and shape for a long time with a lower cost than polyurethane.



OUTSOLE

The outsole is the outermost part of the shoe that is in contact with the ground. The outsole is meant to provide footwear with the necessary traction and protection from the surfaces it will be in contact with. They can be made from various materials, often rubber, polyurethane, leather, and other synthetic materials. The material used is dependant on the usage and the environment the boot will be subjected to.

POPULAR OUTSOLE COMPOUNDS

RUBBER

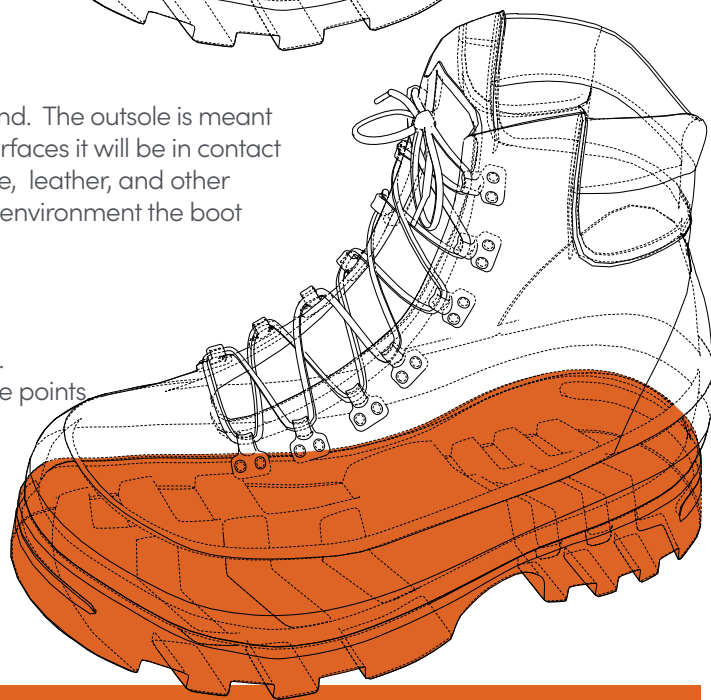
Natural rubber often mixed with additives to provide oil and slip resistance. Heavier than polyurethane and TPU but the benefits outweigh the negative points. More pliable in cold climates.

POLYURETHANE (PU)

Resistant to chemicals and lightweight although prone to hardening in extreme cold. Can be a less expensive option for an entry level boot.

THERMO-PLASTIC POLYURETHANE (TPU)

Great abrasion, heat and chemical resistance with cold weather performance.



Safety Components

STEEL TOE VS. COMPOSITE TOE

Steel toe offers classic protection with the highest available standard for impact and compression. It leaves a roomier fit in the toe box and has incredible durability. Composite toe is a great alternative to steel toe, it passes the same protection standards as steel toe but is non-metallic and lighter compared to traditional steel.

PLATE

Steel-plated safety shoes offer puncture resistance in the sole of the shoe. Composite plate safety shoes offer lightweight, metal-free puncture resistance.

MET GUARD

There are two types of metatarsal guards – external and internal. They both have to meet the same CSA Z195-14 and ASTM standards, using a specific impact test for metatarsal guards. A 50-pound weight in the shape of a 1 inch diameter bar is dropped eighteen inches onto the metatarsal area of the shoe, resulting in a 75 foot-pound impact to the metatarsal guard. A full 1-inch clearance

must be maintained under the metatarsal impact area on the inside of the shoe. The results are clearly seen and measured from a soft wax foot-form, which was placed within the shoe before the test and removed afterward to measure the deflection of the guard during impact.

ELECTRIC SHOCK RESISTANCE (ESR)

Contains a sole and heel design assembly that at the point of manufacturing has insulating properties intended to withstand 18,000 volts.

STATIC DISSIPATIVE

Static dissipative is the opposite to Electric Shock Resistance, SD grounds you. The outsoles are made from an anti-static compound, chemically bound into the bottom components, capable of dissipating an electrostatic charge in a controlled manner.



ARMOUR FLEX® /ARMOUR FLEX+®

This technology is a multi-layer textile composite made from a high tenacity yarn. The woven fabric undergoes different treatments to reach the desired level of hardness while maintaining its flexibility. The ARMOUR-FLEX® textile insole can be sewn directly onto the upper and offers a greater area of protection of the bottom of the foot. ARMOUR-FLEX® will keep your feet warmer in winter because, unlike steel, it will not conduct heat away from your foot. ARMOUR-FLEX® provides the technology that you need to keep your feet protected, while still allowing your foot to bend. ARMOUR-FLEX+® uses a slightly heavier and stiffer material than regular ARMOUR-FLEX® construction and offers a higher puncture resistance.



DURATOE®

DURATOE® is a molded toe cap applied to the outside of the work boot to increase the life of the toe area of the boot. The toe cap can be made of a variety of materials that may look or have properties similar to plastics and other artificial components. They will be quite flexible and extremely durable, ensuring that the toes of your work boots withstand hard wearing.



FRESHTECH®

FRESHTECH® is a safe and invisible antimicrobial treatment that is applied to our footwear and garment products. In garments the treatment inhibits the growth of bacteria that cause odor. In footwear the treatment inhibits the growth of fungi, mold, and mildew, in addition to odor causing bacteria. The FRESHTECH® treatment stops bacteria and fungi from reproducing, which creates a safe and comfortable product. We ensure the effectiveness and durability of FRESHTECH® through standard testing.



HYPER-DRI® FOOTWEAR

Waterproof/Breathable: Designed with a seam sealed, bootie shaped, waterproof and breathable membrane providing an impenetrable barrier to the elements while allowing body generated moisture to escape. The membrane used must meet our high waterproof and water vapour transmission testing standards. Footwear is water tank tested to 50 000 foot flexes to simulate extreme conditions.



QUAD-COMFORT®

The QUAD COMFORT® footwear technology consists of a minimum of 4 comfort components, which address shock absorption, weight distribution, cushioning & pressure displacement and occasionally outsole performance. The construction of the footwear depends on their end use and the requirements of the footwear. The four components are integrated between the footbed or insole through to the bottom of the outsole. If a component provides a significant and functionally noticeable advantage, it may also comprise a feature that is incorporated into the upper of the footwear. Shock absorption is addressed by adding additional cushioning in the heel of the shoe as it is the first areas of contact when walking. Another component of comfort can be added under the ball of the foot to help distribute weight, alleviate pressure points and provide greater energy return. For cushioning and pressure displacement, our footwear uses lightweight, flexible functional midsoles that can be made up of many densities of cushioning. Lastly, outsoles are functionally engineered to provide the utmost in comfort, shock absorption and flexibility.



TARANTULA ANTI-SLIP®

Our TARANTULA ANTI-SLIP® outsoles provide the ultimate in slip protection by reducing the likelihood that you'll slip or fall on wet and/or greasy surfaces. To achieve this high performance, the outsoles use a unique tread pattern and advanced compound to increase the coefficient of friction. Our anti-slip outsoles provide incredible grip to resist slipping on most surfaces including wet, soapy, oily and greasy surfaces. To achieve this high performance, the footwear has a unique tread pattern and soft rubber compound to increase the coefficient of friction. Many other shoe outsoles hydroplane on wet surfaces, resulting in poor traction for the wearer. TARANTULA ANTI-SLIP® outsoles, however, push liquids to the outside using unique micro channels, instead of keeping liquids underfoot.

DISCLAIMER: This footwear has been tested for wet and dry conditions. It has not been tested for use on any type of ice.



ICEFX®

Leading-edge technology features an innovative tread design to provide greater surface contact in the heel strike zone and forefoot to achieve an anti-slip outsole. The outsole uses a softer, more flexible rubber compound that performs in the cold and incorporates gripping pods to provide advanced traction. ICEFX® may also utilize other compounds or materials in the outsole to help achieve slip resistance on ice. Constant research is explored to search for new and better materials to provide a "Safer Way to Walk on Ice".

DISCLAIMER: ICEFX® provides enhanced traction on ice but does not guarantee slips will not occur under any circumstances. Care should always be taken when walking on ice.



T-MAX®

The warmest, lightest hypo-allergenic insulation on the market. It regulates body temperature by allowing moisture to move away from the body, keeping the body dry and comfortable.



VIBRAM®

Vibram soles are an expert integration of functional design and high performance compounds. Vibram ensures that demanding workers have reliable and safe products for their professional activities, in any situation, in any weather condition or environment. Grip, stability, heat and oil resistance, electrical hazard rated, flexibility: a boot powered by Vibram improves worker efficiency, performance, reliability and comfort.



VIBRAM FIRE & ICE™

The Vibram® Fire & Ice™ compound has been studied for extreme applications and maintains its performance values in a wide range of temperatures (from - 20°C to + 250°C). The formulation satisfies both requirements for fire resistance from NFPA and the Ross cold flex at -23°C.

Deciphering The Symbols



CSA Green Triangle

Indicates sole puncture protection with Grade 1 protective toecap which can withstand impacts of 125 joules (22.7 kg object falling from 56 cm above).



CSA White Rectangle with Orange Omega

Indicates soles that provide electric shock resistance. Intended to withstand 18,000 volts at 60Hz for one minute without disruptive discharge to ground; leakage current not exceeding 1mA.



CSA Yellow Rectangle

Indicates soles are static-dissipative.

Warning: This footwear should not be used where contact with live electrical conductors can occur.



CSA Blue Rectangle

Indicates Grade 1 protective toecap without sole puncture protection.



CSA Dark Grey Rectangle with White M

Indicates metatarsal protection. Note: Toe protection is required for all metatarsal protective footwear.

These boots are intended for industrial work environments where heavy objects can hurt the metatarsal region of the foot.

The Language of Footwear

ANSI

International standards organization that develops and publishes voluntary consensus technical standards for a range of materials.

Aerospace Lining

A breathable synthetic lining comprised of a mesh-like structure.

Anti-microbial

A chemical treatment applied to footwear linings which prevents microbe growth.

ATCP

Aluminum toe, composite plate.

Cement Construction

A shoe construction in which the upper of a shoe is cemented, rather than stitched, to the bottom of a shoe. Cement construction results in a lighter, more flexible shoe.

Contoured Footbed

An insole that molds to the shape of your foot.

Composite Plate

A safety, puncture resistant sole plate used in safety footwear in replacement of steel plates. A few varieties exist today, made of synthetic materials such as nylons, resins and also Kevlar.

CTCP

Composite toe, composite plate.

Dri-Tec

A generic term for breathable, moisture-wicking lining found in footwear.

Dual Density Midsole

A midsole that employs two different densities of cushioning foam.

ESR

Electrical shock resistance.

EVA

Ethylene Vinyl Acetate - A synthetic compound used for outsoles. EVA provides cushioning to the footbeds, midsoles, and is easily shaped by heat and pressure.

Footbed

Sometimes also referred to by customers as the insole. It is the foundation in footwear that rests under the foot and has a critical role in comfort.

Goodyear Welt Construction

A shoe construction in which the upper and sole of the shoe are stitched together, resulting in greater durability. The resulting seam is visible and runs around the outside of the shoe, where the upper and outsole meet.

Green Diamond Technology

Patented silica carbide crystals are embedded throughout the rubber outsole which are durable and long lasting traction on ice.

Heel Counter

Counters provide support and help the upper wrap around the foot.

Injection Molded Construction

A type of sole unit construction created by injecting material into the sole mold. Injection molded construction is an efficient way to mass-produce footwear.

Inseam

The hidden seam of a welted shoe holding together the welt, upper, lining and insole.

Metguard

A safety feature found in some boots which is comprised of a protective cap that covers the metatarsal area of the foot and protects against injury from impacts. Can be internal or external.

Moisture Wicking

Synthetic materials that have been developed specifically to channel perspiration away from the body.

Nubuck Leather

Nubuck is a type of leather with a soft, velvety surface and is far more durable than suede.

Oarprene

Rubber that is acid and oil resistant.

OrthoLite

OrthoLite insoles are made up of open-cell foam, allowing air to circulate around the foot, keeping it cooler inside the shoe. The open cell structure also moves moisture away from the foot, keeping it drier.

PU

Polyurethane; a type of man-made material.

PVC

Polyvinyl chloride. A semi-rigid plastic, often used in heel counters and outsoles for added support.

SD

Static Dissipating. The shoe dissipates static buildup on the body so as not to cause an arcing effect.

STSP

Steel toe, steel plate.

STCP

Steel toe, composite plate.

TPR

Thermo plastic rubber. A plastic material used by many manufacturers in the injection molding process.

TPU

Thermopolyurethane. Man made material used in footwear production on uppers, but also outsoles.

Upper

The part of the shoe that covers the top part of the foot, from heel to toe.

Welt

A strip of material sewn between the insole and the outsole to create greater durability.

Index

MEN'S

8 INCH BOOTS

10-8680	19	91631
1026789	19	960-02
5ANADK0-8550	6	968-01
5ANADK1-8410	5	CMR6971
5ANADK2-8006	3	HHS202026
5ANADK2-8500	2	HHS212042
5ANAD2-8529	3	HHS232001
5ANADK2-8529WP	4	HHS243001
5ANADK2-8610	6	P717627
5ANADK2-8611	7	P720204
5ANADK3-8300	7	P724582
5ANADK5-8877	2	TB0A1Q6R001
5ANADK7-8510	8	TB0A22H2231
5ANADK8-8523	8	TB0A5M2T214
5ANADK8024B	8	TB0A5NFT214
5ANADK9-8517	4	TB0A5SXH214
5ANADK9-8518	3	TR0A4NRFBLK
5ANADK9-8522	5	HIKERS
5ANADK9-8537	5	1020096
5ANADK9-8577	6	26039MDQC-AS
5700GT	18	302123
5700GTR	18	5ANCAG9-2000
6020VT	18	5ANCAG9-2300
8600FLX	19	5ANCDK0-2301
CMR1999	17	5ANCDK0-2302
CMR8939	17	5ANCDK2-2410
HHF212005	10	5ANCDK2-2411
HHS202022	10	5ANCDK-2120
HHF231104	11	5ANCDK8-2127
HHS212040	11	HHS211005
HHS232000	9	HHS231006
HHS242003	9	HHS231007
HHS242004	10	J003345W
KD0ATHHBLK	13	KD0A4TELA62
P717629	13	P720996
P720211	13	P725173
TB0A1Q5U214	14	TB0A2CB8001
TB0A1Q6Z001	14	ATHLETIC
TB189645001	15	10-501
TB0A12EZ214	14	108008BLL
TB0A24AJ214-1	15	5ANDAG2-3000
TB1A1VYP001	16	5ANDAG2-3001
TB1A28VR214	16	5ANDDK0-1117QC
TB1A4499214	17	5ANDDK0-1119QC
TB0A5U6Y214	15	5ANDDK0-3819
TR0A4NQ9FWE	12	5ANDDK0-3820
METGUARDS		5ANDDK1-3830
1027693	23	5ANDDK1-3831
2988B	23	5ANDDK2-3613
5ANADK2-8514	22	5ANDDK2-3621
5ANADK3-8112	22	5ANDDK2-4001
HHS222044	22	5ANDDK3-3821
TB0A1WUT001	23	5ANDDK3-3822
6 INCH BOOTS		5ANDDK6-3617
1023250	36	5ANDDK8-3603
10-8480	37	5ANDDK8-3604
163-01	38	602SP2
168-01	38	HHS194002
180-01	38	HHS194003
5ANBDK0-6550	29	HHS214004
5ANBDK0-6557	29	HHS222001
5ANBDK1-6410	28	HHS222002
5ANBDK2-6006	25	IB3317
5ANBDK2-6100	27	IB4041
5ANBDK2-6101	27	IB4311
5ANBDK2-6500	25	P725179
5ANBDK2-6612	25	P725306
5ANBDK6-6877	28	P725307
5ANBDK9-6516	30	P725695
5ANBDK9-6518	26	TB0A29C6001
		TB0A297S001
		TB0A5PS2001

36	TB0A5TYB001-01
39	TB0A5V33001
39	TB0A5V3Q001
37	ANTI-SLIP
32	5ANDAG2-3400
32	5ANDAG2-3401
31	5ANDAG2-3403
31	5ANDDK0-3020
34	5ANDDK0-3021
33	5ANDDK0-3023
34	5ANDDK0-3025
36	5ANDDK0-3026
35	5ANDDK0-3027
35	5ANDDK3-3028
34	5ANDDK3-3029
35	TACTICAL
33	5402
	5419
47	5420
42	5440
45	5448
41	STATIC DISSIPATIVE
41	5ANDDK9-3200
42	5ANDDK9-3201
41	TB0A2A55001
43	WET WEATHER
43	3186-11A
43	5ANEAG2-9500
42	5ANEAG2-9600
44	5ANEDK3-9850
44	5ANEDK3-9860
44	8564
47	9699
45	A1305B-11
46	E902033
46	HHF196120
47	HHF234011
	HHF234012
60	HHF236121
56	HHS214011
49	HHS214012
49	LICO-M001
52	LICO-MP01
52	LPLKL01
53	PB661841MWCSA
54	TR113001BLK-1
53	WINTER
53	5ANFAGW0-8910
49	5ANFDKW2-8907
50	5ANFDKW6-8524
52	5ANFDKW7-8901
51	5ANFDKW8-8527
51	5ANFDKW8-8530
51	915605
50	HHF221101
50	HHF231102
60	HHF231103
54	JD6610
54	JD7710
55	TB0A5QXJ001
55	WOMEN'S
55	8 INCH BOOTS
61	5BOAAG6-8500
61	5BOADKO-8030
61	5BOADK1-8020
57	5BOADK4-8006
57	5BOADK5-8112
56	5BOADK9-8016
56	HHS202181W
59	P311182
58	TB0A1KQS001
60	TB0A5V1U214

58	TROA4NRDBLK-01	90
59	6 INCH BOOTS	
59	163-01	97
	168-01	97
63	180-01	97
63	5BOBAG4-6500	92
63	5BOBDK1-6020	92
65	5BOBDK2-6030	93
66	5BOBDK5-6016	93
66	5BOBDK6-6006	93
64	960-02	98
64	968-01	98
64	HHF191061W	94
65	HHS202160W	94
65	KD0A4TDFBLK	95
	P310912	95
68	TB0A1KJU214	95
69	TB0A2KAJ231	96
69	TB0A5V2F001	96
68	HIKERS	
69	305003DW	102
	5BOCAG9-2501	100
71	5BOCAG9-2502	100
71	5BOCDK0-2003	101
71	5BOCDK0-2007	100
	5BOCDK8-2120	101
79	J006128	102
73	ATHLETIC	
73	1025244	109
74	308004BLK	107
73	308005BLK	108
77	5BODAG9-1501	104
77	5BODDK7-3602	105
79	5BODDK8-1007	104
78	5BODDK9-1008	104
76	5BODDK9-1009	105
74	5BODWM2-102	110
75	5BODWM2-103	110
76	5BODWM2-104	110
74	HHS201006W	106
75	IB046	109
76	IB314	109
77	KD0A4TGXBLK	108
78	P310493	106
78	P725770	106
79	TB0A5PVT001	107
	TB0A5SSU236	107
81	ANTI-SLIP	
81	5BODAG2-3400	112
83	5BODAG2-3401	112
82	5BODDK0-3105	113
82	5BODDK0-3106	113
82	5BODDK0-3107	114
84	5BODDK0-3108	112
83	5BODDK3-3109	113
83	76551	114
84	77210	114
85	STATIC DISSIPATIVE	
85	IB492	117
84	TB0A2A63001	117
	WET WEATHER	
	5BOEAG4-9500	118
87	5BOEAG8-9601	118
87	HHF216113W	119
87	HHF236113W	119
87	WINTER	
88	5BOFDK7-8520	121
89	5BOF-LNR-8520	121
88	5BOFDK8-8905	121
89		
89		
90		
90		



HEAD OFFICE

205 Quarry Park Blvd. SE
Calgary, Alberta

P 1.855.592.7444

W markscommercial.com

Mark's Commercial is a proud member of
the Canadian Tire Group of Companies.

*It is our mission to work with
forward thinking organizations,
to keep Canadian employee's
warmer, drier and safer
using leading edge technology
and innovation, with the goal
of achieving an accident free future
and bringing employee's
home safe...every single day.*



**Working Together Towards
An Incident Free Future**