



INDUSTRIAL FOOTWEAR

2025 CATALOGUE

Contents

MEN'S

8 INCH BOOTS

1

METGUARDS

24

6 INCH BOOTS

29

HIKERS

47

CASUAL

55

STATIC DISSIPATIVE

70

ANTI-SLIP

73

TACTICAL

79

WET WEATHER

82

WINTER BOOTS

92

WOMEN'S

8 INCH BOOTS

99

6 INCH BOOTS

104

HIKERS

112

CASUAL

117

ANTI-SLIP

127

WET WEATHER

133

WINTER BOOTS

136

FOOTWEAR INFORMATION

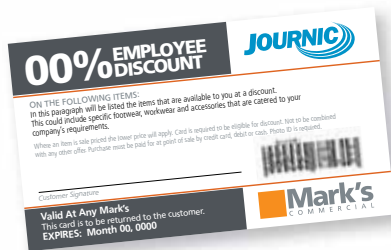
138

Sizes may be limited in some styles due to unforeseen circumstances. Consult your corporate sales person for the most up-to-date information on styles shown in this book.



3 CONVENIENT WAYS TO SHOP FOR COMPANY WORKWEAR AND FOOTWEAR

It's never been easier for company employees to purchase industrial footwear at your favorite Mark's store.



CLIENT SAVINGS CARD

Show the card at any Mark's store to receive your specified discount for a variety of store items shown on the card.

These cards are re-useable and valid until the expiry date found at the bottom of the card. The card must be presented for discounts to be applied against regular priced items. In the event of an item being sale priced, the lower price will apply.

CLIENT VOUCHER

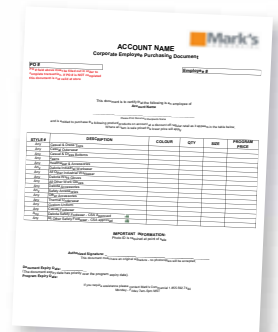
Simply show the voucher at any Mark's store to receive the specified discount shown for a variety of store items listed on the voucher.

The voucher must be shown for discounts to be applied against regular priced items. In the event of an item being sale priced, the lower price will apply.



CLIENT INDUSTRIAL FOOTWEAR PURCHASING CARD

Our new footwear purchasing card contains all the benefits of the voucher combined with a more flexible client reporting experience and easier in-store purchasing. The card is only to be used on industrial footwear.





MEN'S
8 INCH
BOOTS





DAKOTA
WORKPRO SERIES

STYLE: 5ANADK9-8517
SIZES: 7-11,12,13,14,15,16,17
CSA GRADE 1 STEEL TOE, COMPOSITE PLATE. ESR.

8" "8517" Quad Comfort® STCP Work Boot

- Full grain leather upper.
- FRESHTECH® treated lining.
- 200g T-MAX® insulation.
- QUAD COMFORT®, a better way to walk.
- Removable polyurethane footbed.
- Poured polyurethane welt midsole.
- TARANTULA® ANTI-SLIP rubber outsole, engineered to help prevent slips and falls.

EXCLUSIVELY AT
Mark's



DAKOTA
WORKPRO SERIES

STYLE: 5ANADK4-8100
SIZES: 7-11,12,13,14
CSA GRADE 1 COMPOSITE TOE, COMPOSITE PLATE. ESR.

Exclusive to Marks: From Dakota Workpro, these leather work boots have tough leather uppers. The waterproof boots are equipped with our light and warm T-MAX® INSULATION and TARANTULA ANTISLIP® outsoles. These boots comply with CSA Grade 1 requirements for composite toes and plates, electric shock resistance and superior-grade puncture resistance.

8" "8100" CTCP Work Boot

- Leather upper.
- FRESHTECH® lining with 200g T-MAX® insulation.
- QUAD COMFORT®, a better way to walk.
- Removable polyurethane footbed.
- Poured polyurethane welt midsole.
- TARANTULA® ANTI-SLIP rubber outsole, engineered to help prevent slips and falls.

EXCLUSIVELY AT
Mark's





DAKOTA

WORKPRO SERIES

STYLE: 5ANADK9-8522

SIZES: 7-11,12,13,14

CSA GRADE 1 STEEL TOE, STEEL PLATE. ESR.

8" "8522" Quad Comfort® STSP Waterproof Boot

- Waterproof full grain leather upper.
- HYPER-DRI® HD3 waterproof, breathable membrane.
- 200g T-MAX® insulation.
- Poured polyurethane welt midsole.
- Removable polyurethane footbed.
- **QUAD COMFORT®**, a better way to walk.
- **TARANTULA® ANTI-SLIP** rubber outsole, engineered to help prevent slips and falls.

EXCLUSIVELY AT

Mark's



DAKOTA

WORKPRO SERIES

STYLE: 5ANADK9-8537

SIZES: 7-11,12,13,14

CSA GRADE 1 ALUMINUM TOE, COMPOSITE PLATE. ESR.

8" "8537" Quad Comfort® ATCP Work Boot

- Full grain leather upper with TPU/Kevlar® reinforced molded side quarter panels.
- Breathable lining with 200g T-MAX® insulation.
- Removable polyurethane footbed.
- **QUAD COMFORT®**, a better way to walk.
- Poured polyurethane welt midsole.
- **TARANTULA® ANTI-SLIP** rubber outsole, engineered to help prevent slips and falls.

EXCLUSIVELY AT

Mark's



DAKOTA

WORKPRO SERIES

STYLE: 5ANADK3-8300

SIZES: 7-11,12,13,14

CSA GRADE 1 COMPOSITE TOE, COMPOSITE PLATE. ESR.

8" "8300" Waterproof CTCP Work Boot

- Full grain leather upper.
- HYPER-DRI® HD3 waterproof membrane.
- Mesh lining with DRI-TEC®.
- 200g T-MAX® insulation.
- **QUAD COMFORT®**, a better way to walk.
- Removable polyurethane footbed.
- Internal polyurethane midsole with exterior TPU shell.
- **TARANTULA® ANTI-SLIP** rubber outsole, engineered to help prevent slips and falls.

EXCLUSIVELY AT

Mark's

DAKOTA
WORKPRO SERIES

STYLE: 5ANADK2-8610

SIZES: 7-11,12,13,14

CSA GRADE 1 STEEL TOE, COMPOSITE PLATE. ESR.

Equipped with CSA Grade 1 approved steel toes and composite plates, these Dakota work boots also have the protection of X-TOE® EXTERNAL SAFETY TOES that offer safety on the outside and more comfort inside. QUAD COMFORT® technology addresses shock absorption, weight distribution, cushioning and pressure displacement, while FRESHTECH® controls odour for all-day freshness. T-MAX® INSULATION allows you to work comfortably in winter conditions and TARANTULA ANTISLIP® rubber outsoles offer a safer way to walk. These work boots are well equipped for durability and service on the job.

8" X-Toe® STCP Work Boot

- Leather upper.
- **QUAD COMFORT®**, a better way to walk.
- 200g **T-MAX®** insulation.
- Removable polyurethane footbed.
- Poured polyurethane welt midsole.
- **TARANTULA® ANTI-SLIP** rubber outsole, engineered to help prevent slips and falls.

EXCLUSIVELY AT
Mark's

DAKOTA
WORKPRO SERIES

STYLE: 5ANADK2-8611

SIZES: 7-11,12,13,14

CSA GRADE 1 STEEL TOE, COMPOSITE PLATE. ESR.

8" Winter "X-TOE" Insulated STCP Work Boot

- Waterproof leather upper.
- **HYPER-DRI® HD3** waterproof, breathable membrane.
- 600g **T-MAX®** insulation.
- **QUAD COMFORT®**, a better way to walk.
- EVA midsole, removable polyurethane footbed.
- **ICEFX® ANTISLIP** rubber outsole with **GREEN DIAMOND®** and **ICELANDIC GRIP®**.
- External steel safety toe.

EXCLUSIVELY AT
Mark's

DAKOTA
WORKPRO SERIES

STYLE: 5ANADK4-8200

SIZES: 7-11,12,13,14

CSA GRADE 1 COMPOSITE TOE, COMPOSITE PLATE. ESR.

Our Dakota Workpro work boots are waterproof for outdoor work sites. Designed to meet CSA Grade 1 standards with composite toes and plates, these boots are also built for comfort. They provide odour protection with FRESHTECH® technology. The ENDURALITE™ midsoles and TARANTULA ANTISLIP® outsoles are amazingly lightweight and durable.

8" "Enduralite" CTCP Waterproof Work Boot

- Lenzi Textile upper.
- HYPER-DRI® HD3 waterproof membrane.
- TPU toe cap.
- Breathable mesh lining.
- Removable polyurethane footbed.
- **ENDURALITE™** midsole. Enhance your walking experience with our proprietary **ENDURALITE™** midsole technology. Crafted from supercritical foam, a specialized material known for its remarkable lightweight comfort, excellent cushioning, underfoot support, and durability. This technology helps reduce fatigue during extended wear.
- **TARANTULA® ANTI-SLIP** rubber outsole, engineered to help prevent slips and falls.

EXCLUSIVELY AT
Mark's

DAKOTA
WORKPRO SERIES

STYLE: 5ANADK4-8700

SIZES: 7-11,12,13,14

CSA GRADE 1 COMPOSITE TOE, COMPOSITE PLATE. ESR.

"8700" CTCP Western Safety Work Boot

- Leather upper.
- Helcore groove leather heel counter.
- DRI-TEC® lining with FRESHTECH®.
- **QUAD COMFORT®**, a better way to walk.
- EVA midsole, removable polyurethane footbed.
- **TARANTULA ANTISLIP®** rubber outsole.

EXCLUSIVELY AT
Mark's



These rugged steel-toed safety boots from Dakota will be a reliable addition to your work gear. Great for outdoor work in the fall and winter months, the boots are lined with T-MAX® insulation to help keep your feet warm. The FRESHTECH® Odour protection technology for all day freshness. Uppers are made from durable full grain leather, with HYPER-DRI® HD3 waterproof and breathable membranes. They provide an impenetrable barrier to the elements while allowing body-generated moisture to escape. The tough Vibram Fire & Ice outsoles are made of a durable flame/heat/oil-resistant compound and provide traction in cold temperatures. The men's work boots are finished with DURATOE® caps, which help the toe boxes to withstand hard wearing conditions.

8" "8557" STCP Waterproof Boot

- Waterproof full grain leather upper.
- HYPER-DRI® HD3 waterproof, breathable membrane.
- 200g T-MAX® insulation.
- Textile lining with FRESHTECH®.
- QUAD COMFORT®, a better way to walk.
- Removable cushioning polyurethane footbed.
- Poured polyurethane midsole.
- VIBRAM® FIRE & ICE rubber outsole.

EXCLUSIVELY AT
Mark's



8" Vibram® Arctic Grip "8510" CTCP Work Boot

- Full grain leather upper.
- Moisture wicking and breathable DRI-TEC® lining.
- QUAD COMFORT®, a better way to walk.
- 200g T-MAX® insulation.
- Removable EVA sponge footbed.
- Vibram® Arctic Grip Pro rubber outsole.
- TPU DURATOE® guard.

EXCLUSIVELY AT
Mark's

DAKOTA
WORKPRO SERIES

STYLE: 5ANADK0-8560

SIZES: 7-11,12,13,14

CSA GRADE 1 COMPOSITE TOE, COMPOSITE PLATE. ESR.

These Dakota men's eight-inch safety boots are made of ballistic nylon for durability and are waterproof. For added boot protection, they have exterior toe caps, built to withstand hard wearing conditions and extending the life of the toe box. They're constructed with DRI-TEC linings treated with FRESHTECH® Odour protection technology for all day freshness. Our T-MAX® insulation provides maximum warmth and superior comfort when the temperature is low. Safety features include composite toes and plates and the boots resist puncture and electric shock.

8" "8560" Ballistic Nylon CTCP Work Boot

- Ballistic nylon upper with water resistant backing.
- DRI-TEC lining with FRESHTECH®.
- 200g T-MAX® INSULATION.
- HYPER-DRI® HD3 waterproof, breathable membrane.
- Removable ETPU footbed.
- Polyurethane midsole.
- TARANTULA® ANTI-SLIP rubber outsole, engineered to help prevent slips and falls.

EXCLUSIVELY AT
Mark's



DAKOTA
WORKPRO SERIES

STYLE: 5ANADK8024B

SIZES: 7-11,12,13

CSA GRADE 1 STEEL TOE, STEEL PLATE. ESR.

8" "Ironworker" STSP Unlined Work Boot

- Oiled full grain leather upper with lace to toe lacing system.
- Unlined.
- Removable triple density footbed.
- Wedge rubberlon outsole.
- Abrasion resistant toe guard.

EXCLUSIVELY AT
Mark's





DAKOTA
WORKPRO SERIES

STYLE: 5ANADK8-8523
SIZES: 7-11,12,13,14
CSA GRADE 1 STEEL TOE, STEEL PLATE. ESR.

8" "523" STSP Insulated Ironworker Boot

- Buffalo leather upper.
- Breathable and moisture wicking DRI-TEC® lining with FRESHTECH®.
- 200g T-MAX® insulation.
- Removable triple density footbed.
- Wedge rubberlon outsole.
- Abrasion resistant toe guard.

EXCLUSIVELY AT
Mark's



DAKOTA
WORKPRO SERIES

STYLE: 5ANADK5-8877
SIZES: 7-11,12,13,14
CSA GRADE 1 STEEL TOE, STEEL PLATE. ESR

8" "877" Duratoe® Insulated STSP Work Boot

- Full grain Buffalo leather upper.
- TPU DURATOE® durable toe guard.
- Breathable and moisture wicking Air Mesh lining with 200g T-MAX® insulation.
- QUAD COMFORT®, a better way to walk.
- Polyurethane injected midsole.
- Removable EVA footbed.
- TARANTULA® ANTI-SLIP rubber outsole, engineered to help prevent slips and falls.

EXCLUSIVELY AT
Mark's



DAKOTA
WORKPRO SERIES

STYLE: 5ANADK2-8006
SIZES: 7-11,12,13,14
CSA GRADE 1 STEEL TOE, COMPOSITE PLATE. ESR.

8" "8006" Quad Comfort® STCP Work Boot

- Nubuck leather upper.
- Polyurethane DURATOE® guard.
- Breathable and moisture wicking Cambrelle lining with 200g T-MAX® insulation.
- Removable 4 density EVA footbed.
- Direct injected polyurethane midsole.
- TARANTULA® ANTI-SLIP rubber outsole, engineered to help prevent slips and falls.

EXCLUSIVELY AT
Mark's



DAKOTA
WORKPRO SERIES

STYLE: 5ANADK9-8518
SIZES: 7-11,12,13,14
CSA GRADE 1 STEEL TOE, STEEL PLATE. ESR.

8" "8518" STSP T-Max® Insulated Work Boot

- Nubuck leather upper.
- Polyurethane DURATOE® exterior toecap.
- Padded collar.
- DRI-TEC lining with FRESHTECH®.
- 200g T-MAX® insulation.
- Removable polyurethane foam footbed.
- Polyurethane midsole.
- TPU outsole.

EXCLUSIVELY AT
Mark's



DAKOTA
WORKPRO SERIES

STYLE: 5ANADK2-8529
SIZES: 7-12,13,14,15,16,17
CSA GRADE 1 STEEL TOE, STEEL PLATE. ESR.

8" "529" STSP Work Boot

- Full grain leather upper.
- DURATOE® "529" TPU exterior toecap.
- Moisture wicking and breathable DRI-TEC® lining with 200g T-MAX® insulation.
- QUAD COMFORT®, a better way to walk.
- Cushioning Rubberlon midsole.
- TARANTULA® ANTI-SLIP rubber outsole, engineered to help prevent slips and falls.

EXCLUSIVELY AT
Mark's



DAKOTA
WORKPRO SERIES

STYLE: 5ANADK2-8529WP
SIZES: 7-11,12,13,14,15
CSA GRADE 1 STEEL TOE, STEEL PLATE. ESR.

8" "529" HD3 Waterproof STSP Work Boot

- Waterproof leather upper.
- HYPER-DRI® HD3 waterproof, breathable membrane.
- DURATOE® "529" TPU exterior toecap.
- Moisture wicking and breathable DRI-TEC® lining with 200g T-MAX® insulation.
- Cushioning Rubberlon midsole.
- QUAD COMFORT®, a better way to walk.
- TARANTULA® ANTI-SLIP rubber outsole, engineered to help prevent slips and falls.

EXCLUSIVELY AT
Mark's



AGGRESSOR

STYLE: 5ANADK2-8500

SIZES: 7-11,12,13,14

CSA GRADE 1 STEEL TOE, STEEL PLATE. ESR.

8" "Lynx II" Duratoe® STSP Work Boot

- Buffalo Nubuck leather upper.
- Breathable air mesh lining.
- Removable EVA footbed.
- Polyurethane toe guard.

EXCLUSIVELY AT

Mark's



STYLE: HHS242003

SIZES: 7-11,12,13,14

CSA GRADE 1 ALUMINUM TOE, COMPOSITE PLATE. ESR.

8" Ultralight ATCP Work Boot

- Nylon upper with Polyurethane synthetic eyestay and heel counter.
- DRI-TEC® lining with FRESHTECH®.
- Removable PU sponge footbed.
- HELLYGRIP® rubber outsole.

EXCLUSIVELY AT

Mark's



STYLE: HHS232000

SIZES: 7-11,12,13,14

CSA GRADE 1 STEEL TOE, STEEL PLATE. ESR.

8" STSP Work Boot

- Leather upper.
- DRI-TEC® lining with FRESHTECH®.
- Poured polyurethane midsole.
- HELLYGRIP slip resistant rubber outsole.
- Removable polyurethane footbed.

EXCLUSIVELY AT

Mark's



STYLE: HHS242004

SIZES: 7-11,12,13,14

CSA GRADE 1 COMPOSITE TOE, COMPOSITE PLATE. ESR.

Exclusive to Marks: These Helly Hansen fully waterproof work boots protect your feet on the job site with composite toes and composite plates. They make your feet comfortable with FRESHTECH® odour protection and breathable mesh sock linings. They also feature T-MAX® INSULATION for superior warmth and maximum comfort in cold conditions for maximum warmth and superior comfort.

8" CTCP Work Boot

- Leather upper.
- HELLYTECH® WATERPROOF Performance waterproof membrane.
- DRI-TEC® lining with 200g T-MAX® insulation.
- Removable polyurethane sponge footbed.
- HELLYGRIP™ rubber outsole.

EXCLUSIVELY AT
Mark's



STYLE: HHF212005

SIZES: 7-11,12,13,14

CSA GRADE 1 ALUMINUM TOE, COMPOSITE PLATE. ESR.

8" ATCP High Abrasion Waterproof Work Boot

- Lenzi textile upper.
- HELLYTECH® WATERPROOF Performance waterproof membrane.
- Breathable mesh lining with DRI-TEC®.
- 200g T-MAX® insulation.
- Removable polyurethane sponge footbed.
- HELLYGRIP™ rubber outsole.

EXCLUSIVELY AT
Mark's





STYLE: HHS202022

SIZES: 7-11,12,13,14

CSA GRADE 1 ALUMINUM TOE, COMPOSITE PLATE. ESR.

8" CTCP Safety Work Boot

- Full grain leather upper.
- **HELLYTECH® WATERPROOF** Performance waterproof membrane.
- Removable polyurethane footbed.
- TPU toe cap.
- Injected polyurethane midsole.
- **HELLYGRIP™** rubber outsole.

EXCLUSIVELY AT

Mark's



STYLE: HHS202030

SIZES: 7-11,12,13,14

CSA GRADE 1 COMPOSITE TOE, COMPOSITE PLATE. ESR.

8" CTCP Waterproof Work Boot

- Full grain leather upper.
- **HELLYTECH®** Performance waterproof membrane.
- Removable polyurethane footbed.
- TPU toe cap.
- Injected PU midsole.
- **HELLYGRIP™** rubber outsole.

AVAILABLE ONLINE ONLY

EXCLUSIVELY AT

Mark's



STYLE: HHF231104

SIZES: 7-11,12,13

CSA GRADE 1 COMPOSITE TOE, COMPOSITE PLATE. ESR.

8" CTCP ICEFX® Work Boot

- Full grain leather upper.
- **HELLYTECH® WATERPROOF** Performance waterproof membrane.
- **DRI-TEC®** lining.
- 600g **T-MAX®** insulation.
- Removable polyurethane footbed.
- **ICEFX® ANTISLIP** rubber outsole with **GREEN DIAMOND®**

EXCLUSIVELY AT

Mark's



STYLE: HHS212040

SIZES: 7-11,12,13,14

CSA GRADE 1 COMPOSITE TOE, COMPOSITE PLATE. ESR.

8" CTCP Leather Work Boot

- Waterproof leather upper.
- HELLYTECH® WATERPROOF Performance waterproof membrane.
- DRI-TEC® lining with FRESHTECH®.
- 200g T-MAX® insulation.
- Removable ETPU footbed.
- HELLYGRIP™ rubber outsole.

EXCLUSIVELY AT
Mark's



STYLE: TR0A4NQ9FWE

SIZES: 7-11,12,13,14,15

CSA GRADE 1 COMPOSITE TOE, COMPOSITE PLATE. ESR.

8" "SENTRY 2020" CTCP Work Boot

- Full grain waterproof, seam sealed leather upper with bellows tongue.
- 200g THINSULATE™ insulation.
- Removable premium comfort polyurethane footbed.
- Polyurethane midsole.
- Slip resistant heavy duty TPU outsole.
- Abrasion resistant TECTUFF™ leather back strap.



STYLE: TR0A4TCRFWE

SIZES: 7-12,13,14

CSA GRADE 1 COMPOSITE TOE, COMPOSITE PLATE. ESR.

8" "Carbine" CTCP Waterproof Work Boot

- Waterproof leather upper.
- HYDROGUARD® waterproof membrane.
- 200g THINSULATE™ insulation.
- Removable EVA JEATBOUND™ footbed.
- TERRA® EXOLOK™ external heel counter.
- Moisture wicking lining with CLEANFEET® odour-control treatment.



TERRA

STYLE: TR0A4NRQGYX

SIZES: 7-11,12,13,14

CSA GRADE 1 COMPOSITE TOE, COMPOSITE PLATE. ESR.

8" "Gantry" CTCP Waterproof Work Boot

- Waterproof leather with **HYDROGUARD®** waterproof membrane.
- Moisture wicking lining with **CLEANFEET®** odor management technology.
- Premium comfort PU + **eTPU JETSTRIDE™ FOOTBED®**.
- Polyurethane midsole.
- **VIBRAM® FIRE & ICE** outsole.
- Molded **TERRA®** TPU toe bumper.
- **3M™ Scotchlite™** reflective detail for high visibility.



KODIAK®

STYLE: 310090

SIZES: 7,8-11,12,13,14,15

CSA GRADE 1 ALUMINUM TOE, COMPOSITE PLATE. ESR.

8" "Kodiak Blue Plus" ATCP Work Boot

- Premium waterproof leather upper with sealed seams.
- Moisture wicking lining.
- Anatomical off-centre last.
- Triple stitched molded TPU toe and heel guard.
- Removable **COMFORTZONE®** dual density footbed.
- Polyurethane midsole.
- Slip and oil resistant rubber outsole.



KODIAK®

STYLE: KD0A4THHBLK

SIZES: 7-11,12,13,14,15

CSA GRADE 1 COMPOSITE TOE, COMPOSITE PLATE. ESR.

8" "Quest Bound" CTCP Work Boot

- Premium waterproof leather upper.
- Waterproof breathable membrane.
- Kodiak® **SOS Smell Out Science®** odour control technology.
- **COMFORTZONE®** footbed with **ORTHOLITE®** comfort foam.
- EVA midsole.
- Oil, heat & slip resistant **VIBRAM® TC4+** outsole.
- Molded TPU toe guard, heel and stability strap.





KODIAK®

STYLE: 4TERDB
SIZES: 7-11,12,13,14,15

CSA GRADE 1 COMPOSITE TOE, COMPOSITE PLATE. ESR.

8" "McKinney" CTCP Wellington Waterproof Work Boot

- Full grain waterproof leather upper.
- Waterproof breathable membrane.
- Kodiak® SOS Smell Out Science® odour control technology.
- COMFORTZONE® footbed with ORTHOLITE® comfort foam.
- EVA midsole.
- Oil & slip resistant outsole.



KODIAK®

STYLE: 837CBN
SIZES: 7-11,12,13,14,15

CSA GRADE 1 COMPOSITE TOE, COMPOSITE PLATE. ESR.

8" "Lundbreck" CTCP Pull On Waterproof Work Boot

- Rugged full grain waterproof leather upper.
- Waterproof breathable membrane.
- Kodiak® SOS Smell Out Science® odour control technology.
- COMFORTZONE® footbed with ORTHOLITE® comfort foam.
- EVA midsole.
- Oil & slip resistant, non marking rubber outsole.



CAT

STYLE: P720211
SIZES: 7-11,12,13

CSA GRADE 1 COMPOSITE TOE, COMPOSITE PLATE. ESR.

8" "Control" Waterproof CTCP Work Boot

- Full grain leather upper.
- Waterproof breathable membrane.
- 200g THINSULATE® insulation.
- Slip resistant rubber outsole.
- Removable EVA footbed.
- PVC welt midsole.





STYLE: P717629

SIZES: 7-11,12,13

CSA GRADE 1 COMPOSITE TOE, COMPOSITE PLATE. ESR.

8" "Hauler" Waterproof CTCP Work Boot

- Full grain leather upper.
- Waterproof breathable membrane.
- 200g THINSULATE® insulation.
- Breathable nylon mesh lining.
- Removable Nylex and polyurethane foam footbed.
- SRX slip resistant outsole compound with excellent traction and abrasion protection.
- TPU toe guard.



STYLE: P725891

SIZES: 7-11,12,13

CSA GRADE 1 COMPOSITE TOE, COMPOSITE PLATE. ESR.

8" "Hauler XL" CTCP Waterproof Work Boot

- Full grain leather upper.
- Waterproof breathable membrane.
- Breathable Nylon mesh lining.
- 200g THINSULATE® insulation.
- Removable Nylex & PU foam footbed.
- Slip & abrasion resistant deep cleated rubber outsole.
- TPU toe guard.



STYLE: TB0A12EZ214

SIZES: 7,8-11,12,13

CSA GRADE 1 ALUMINUM TOE, COMPOSITE PLATE. ESR.

8" "Gridworks" ATCP Work Boot

- Premium waterproof leather upper.
- Waterproof breathable membrane.
- Mesh lining with antimicrobial treatment.
- All weather TPU outsole.
- Removable anti-fatigue foot bed.
- Lightweight, cushioning EVA midsole.





STYLE: TB0A1Q6Z001

SIZES: 7-11,12,13,14,15

CSA GRADE 1 COMPOSITE TOE, COMPOSITE PLATE. ESR.

8" "Endurance HD" CTCP Work Boot

- Premium waterproof leather upper.
- Waterproof breathable membrane.
- Breathable mesh lining with antimicrobial treatment.
- 200g **THERMOLITE**® insulation.
- All weather TPU outsole.
- Removable anti-fatigue foot bed.
- Polyurethane midsole.



STYLE: TB0A1Q5U214

SIZES: 7-11,12,13,14,15

CSA GRADE 1 COMPOSITE TOE, COMPOSITE PLATE. ESR.

8" "Endurance HD" CTCP Work Boot

- Premium waterproof leather upper.
- Waterproof breathable membrane.
- Breathable mesh lining with antimicrobial treatment.
- 200g Thermolite® insulation.
- All weather TPU outsole.
- Removable anti-fatigue foot bed.
- Polyurethane midsole.



EXCLUSIVELY AT
Mark's



STYLE: TB0A5U6Y214

SIZES: 7-11,12,13,14,15

CSA GRADE 1 COMPOSITE TOE, COMPOSITE PLATE. ESR.

"True Grit" CTCP Pull On Work Boot

- Premium waterproof leather upper with Ever-guard™ vamp.
- Waterproof breathable membrane.
- Breathable moisture wicking lining with antimicrobial treatment.
- Removable anti-fatigue footbed.
- Polyurethane midsole.
- All weather TPU outsole.





STYLE: TBOA24AJ214-1

SIZES: 7-11,12,13,14,15

NON-SAFETY

Soft Toe "True Grit" Pull On Work Boot

- Premium waterproof leather upper.
- Waterproof breathable membrane.
- Re-BOTL breathable, antimicrobial and moisture wicking lining.
- Removable anti-fatigue footbed.
- Polyurethane midsole.
- TPU outsole.
- NON-SAFETY

NON-SAFETY



STYLE: TB189645001

SIZES: 7-11,12,13,14,15

CSA GRADE 1 COMPOSITE TOE, COMPOSITE PLATE. ESR.

8" "Boondock" CTCP Waterproof Work Boot

- Full grain waterproof leather upper.
- Breathable mesh lining.
- 200g THERMOLITE® insulation.
- Removable anti-fatigue foot bed.
- Polyurethane anti-fatigue midsole.
- VIBRAM® FIRE & ICE rubber outsole.
- Molded VIBRAM® rubber toe cap.



STYLE: TB1A1VYP001

SIZES: 7-11,12,13,14,15

CSA GRADE 1 COMPOSITE TOE, COMPOSITE PLATE. ESR.

8" "Boondock Ballistic" CTCP Work Boot

- Durable Ballistic Nylon double weave upper.
- Waterproof breathable membrane.
- 200g Thermolite® Insulation.
- Re-BOTL breathable, antimicrobial and moisture wicking lining.
- Removable anti-fatigue PU footbed.
- All-Weather TPU slip & oil resistant is heat-resistant up to 120 degrees°C.





STYLE: TB1A4499214

SIZES: 7-11,12,13,14,15

CSA GRADE 1 COMPOSITE TOE, COMPOSITE PLATE. ESR.

“Boondock” Pull On CTCP Work Boot

- Premium waterproof leather upper.
- Waterproof breathable membrane.
- Re-BOTL breathable, antimicrobial and moisture wicking lining.
- 200g **THERMOLITE**® insulation.
- Removable anti-fatigue technology footbed.
- Polyurethane midsole.
- **VIBRAM**® FIRE & ICE rubber outsole.
- Molded **VIBRAM**® rubber toe.



STYLE: TB1A28VR214

SIZES: 7-11,12,13,14,15

CSA GRADE 1 COMPOSITE TOE, COMPOSITE PLATE. ESR.

8” “Boondock” CTCP Waterproof Work Boot

- Durable Ballistic Nylon double weave upper.
- Waterproof breathable membrane.
- 200g **THERMOLITE**® insulation.
- Re-BOTL breathable, antimicrobial and moisture wicking lining.
- Removable anti-fatigue PU footbed.
- All-Weather TPU slip & oil resistant is heat-resistant up to 120 degrees Celsius.

EXCLUSIVELY AT
Mark's



STYLE: TB0A28VR214

SIZES: 7-11,12,13,14,15

CSA GRADE 1 COMPOSITE TOE, COMPOSITE PLATE. ESR.

8” “Boondock HD” CTCP Work Boot

- Premium waterproof leather upper.
- Waterproof breathable membrane.
- Breathable, moisture wicking lining.
- Removable Step **PROPEL**™ footbed.
- **VIBRAM**® Arctic Grip Pro rubber outsole.
- Molded **VIBRAM**® rubber toe.



carhartt

STYLE: CMR8939

SIZES: 8-11,12,13

CSA GRADE 1 COMPOSITE TOE, COMPOSITE PLATE. ESR.

8" "Work Flex" Leather CTCP Work Boot

- Full grain leather upper.
- **STORM DEFENDER**® waterproof breathable membrane.
- Breathable lining.
- 400g 3M™ **THINSULATE**™ insulation.
- Polyurethane Ortholite® footbed.
- EVA midsole.
- Carhartt rubber **RUGGED FLEX**® outsole.
- Rubber toe guard.



carhartt

STYLE: CMR1999

SIZES: 8-11,12,13

CSA GRADE 1 COMPOSITE TOE, COMPOSITE PLATE. ESR.

10" "Flex Mud Wellington" CTCP Work Boot

- Full grain leather upper.
- **STORM DEFENDER**® waterproof breathable membrane.
- Breathable lining.
- 400g 3M™ **THINSULATE**™ insulation.
- Polyurethane Ortholite® footbed.
- EVA midsole.
- Carhartt rubber **RUGGED FLEX**® outsole.
- Rubber toe guard.



ROYER

STYLE: 6020VT

SIZES: 7-11,12,13,14

CSA GRADE 1 COMPOSITE TOE, COMPOSITE PLATE. ESR.

8" "Ventura" CTCP Leather Insulated Work Boot

- Leather upper.
- Breathable, moisture wicking **TAIBRELLE**® lining.
- 200g 3M™ **THINSULATE**™ insulation.
- Removable polyurethane footbed.
- Polyurethane midsole.
- Oil resistant rubber outsole.
- Ultra-resistant TPU **PARESHOK** bumper toe.





ROYER

STYLE: 5700GTR
SIZES: 5,6-11,12,13,14,15,16
 CSA GRADE 1 COMPOSITE TOE, COMPOSITE PLATE. ESR.

8" "Agility Reboot" CTCP Work Boot

- Full grain leather upper with **SHIELDTEX™** abrasion resistant fabric.
- Comfortable and breathable **R-LITE™** footbed.
- Polyurethane midsole.
- Metal free.
- Rubber outsole.
- Ultra resistant TPU **PARESHOK™** toe guard.



ROYER

STYLE: 5700GT
SIZES: 5,6-11,12,13,14,15,16
 CSA GRADE 1 COMPOSITE TOE, COMPOSITE PLATE. ESR.

8" "Agility" Lightweight CTCP Work Boot

- Full grain leather upper with **SHIELDTEX™** abrasion resistant fabric.
- Spacer mesh lining.
- Comfortable and breathable **R-LITE™** footbed.
- Polyurethane midsole.
- Metal free.
- Oil resistant rubber outsole.
- Ultra resistant TPU **PARESHOK™** toe guard.



ROYER

STYLE: 10-8680
SIZES: 8-11,12,13
 CSA GRADE 1 COMPOSITE TOE, COMPOSITE PLATE. ESR.

8" Metal Free CTCP Work Boot

- Waterproof full grain leather upper with **SHIELDTEX™** abrasion resistant fabric.
- **AIRFLOW™** abrasion resistant fabric.
- Breathable, moisture wicking **TAIBRELLE®** lining.
- Lightweight polyurethane midsole.
- Rubber outsole.
- TPU toe cap.



ROYER

STYLE: 8600FLX
SIZES: 7-11,12,13,14

CSA GRADE 1 COMPOSITE TOE, COMPOSITE PLATE. ESR.

8" "Flex" Waterproof CTCP Leather Work Boot

- Waterproof full grain leather upper with SHIELDTEX™ abrasion resistant fabric.
- AIRFLOW™ abrasion resistant fabric.
- Breathable, moisture wicking TAIBRELLE® lining.
- Removable polyurethane footbed.
- Polyurethane midsole.
- Oil resistant rubber outsole.
- TPU toe cap.



KEEN

STYLE: 1026789
SIZES: 7-12,13,14,15

CSA GRADE 1 COMPOSITE TOE, COMPOSITE PLATE. ESR.

8" "Abitibi" Waterproof CTCP Work Boot

- Waterproof leather upper.
- KEEN.DRY® waterproof breathable membrane.
- Mesh and moisture wicking textile lining.
- Removable polyurethane footbed.
- Oil and slip resistant, non marking rubber outsole.



KEEN

STYLE: 1025690
SIZES: 7-12,13,14,15

CSA GRADE 1 COMPOSITE TOE, COMPOSITE PLATE. ESR.

8" "Cincinatti" CTCP Waterproof Work Boot

- Waterproof leather upper.
- KEEN.DRY® waterproof, breathable membrane.
- Moisture wicking textile lining / removable PU footbed.
- Injected PU midsole.
- Oil and slip resistant rubber outsole.



It's a tough job. *What keeps you going?*

Leo worked for moments like this... *you* work so your employees can have more moments like this.



Leo was a big strong man with a booming voice, but he didn't hesitate to push his daughter's stroller through the park or get on the floor to play cars with his son. To provide for his family, he worked for a paving company.

The family lost its cornerstone the day Leo didn't come home from work.

Learn more about Leo's family at threadsoflife.ca/erin/

We care as much about health and safety as you do. We support families like Leo's after the worst happens: an on-the-job fatality, serious injury or occupational disease.

You can help turn workplace tragedy into hope:

Spread the word — Build Threads of Life into your emergency response and EAP programs. Let those who need help know where to find it: www.threadsoflife.ca.

Get involved — Our members share their stories to help prevent future tragedy. Book a Threads of Life speaker for your health and safety day: www.threadsoflife.ca/speakers.

Designate and donate — Make Threads of Life your company's Charity of Choice. Your company's contributions will directly support Canadian families affected by workplace fatalities, life-altering injuries and occupational disease — visit www.threadsoflife.ca/donate



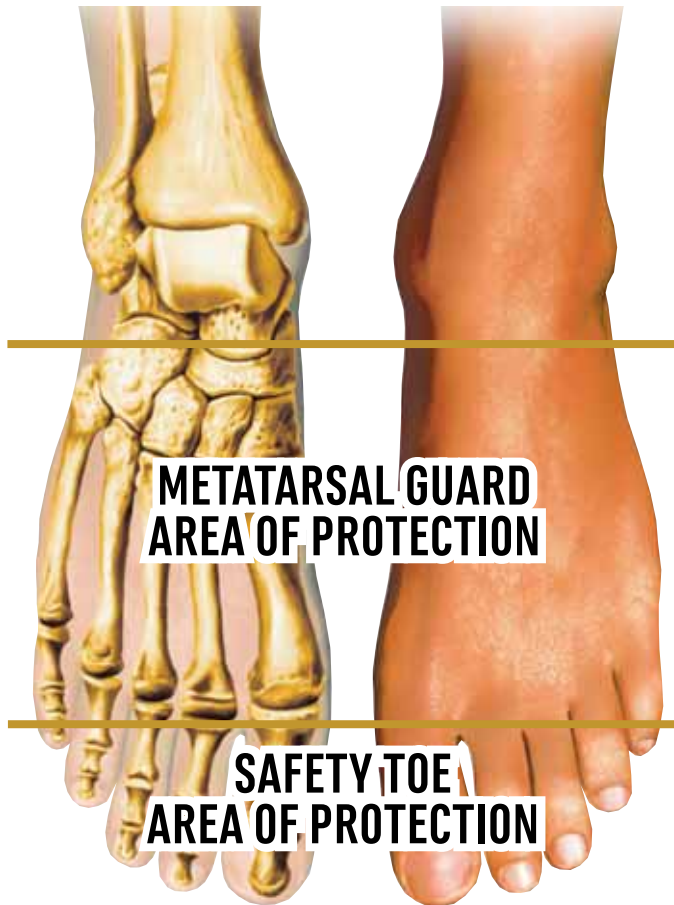
Association for Workplace Tragedy Family Support

Helping you prevent workplace tragedy. Helping victims of tragedy heal.

MEN'S
METGUARD
BOOTS



WHY METATARSAL WORK BOOTS ARE SO IMPORTANT IN THE WORKPLACE.



Metatarsal is the name given to the five bones found in the middle of the foot that form the arch and connected to tissues, ligaments and tendons, providing movement in the foot. This area of the foot is vulnerable to falling objects as there is virtually no flesh, muscle or fat protecting these important bones which makes wearing boots with metatarsal guards so important.

Safety Toe Versus Metatarsal Work Boots

The safety toe will protect primarily the big toe and two to three toes leaving the rest of the foot back to the ankle area susceptible to injury. In this small unprotected area there is 26 bones, 33 joints, 107 ligaments, 19 muscles plus tendons and nerves which can be protected with the addition of a metatarsal guard in work boots.

Choosing A Metguard Boot

There are two types of metatarsal guards – external and internal. They both have to meet the same CSA Z195-14 and ASTM standards, using a specific impact test for metatarsal guards. A 50-pound weight in the shape of a 1 inch diameter bar is dropped eighteen inches onto the metatarsal area of the shoe, resulting in a 75 foot-pound impact to the metatarsal guard. A full 1-inch clearance must be maintained under the metatarsal impact area on the inside of the shoe. The results are clearly seen and measured from a soft wax foot-form, which was placed within the shoe before the test and removed afterward to measure the deflection of the guard during impact.

The Difference Between External and Internal Guards?

External metatarsal guards have the layer of protection on the outside of the footwear, like a turtle's shell. A protective material is usually attached to the toe of the shoe and extends upwards and covers the entire top of the foot. Internal metatarsal guards have the layer of flexible protection on the inside of the footwear offering more comfort. Both guard designs have been improved over the years to offer a high degree of protection with improved resilience and comfort.

Metatarsal boots are very necessary in many environments. It is important to remember that certain industries and companies have specific requirements, regarding which guard they prefer; however, advanced technology has made either option much safer, and more comfortable, in addition to being available in a myriad of styles.



DAKOTA
WORKPRO SERIES

STYLE: 5ANADK3-8112
SIZES: 7-11,12,13,14,15
CSA GRADE 1 STEEL TOE, COMPOSITE PLATE. ESR.

8" "Quad Comfort" STCP Internal Metguard

- Full grain leather upper with side zipper.
- Breathable, moisture wicking mesh lining with T-MAX® insulation.
- QUAD COMFORT®
- Injected polyurethane midsole.
- Removable quad density footbed.
- TARANTULA ANTISLIP® rubber outsole.

EXCLUSIVELY AT
Mark's

DAKOTA
WORKPRO SERIES

STYLE: 5ANADK2-8514
SIZES: 7-11,12,13,14,15
CSA GRADE 1 STEEL TOE, STEEL PLATE. ESR.

Equipped with sound safety and comfort technologies for on-the-job protection, these Dakota work boots have steel toes and plates and external metatarsal guards. They're also resistant to puncture and electric shock. Comfort features include odour protection, lightweight insulation and cushioned midsoles. TARANTULA ANTISLIP® rubber outsoles help to prevent slips and falls.

8" "8514" STSP External Metguard Work Boot

- Full grain leather upper.
- Breathable, moisture wicking DRI-TEC lining.
- 200g T-MAX® insulation.
- QUAD COMFORT®.
- Poured polyurethane welt midsole.
- Removable polyurethane footbed.
- TARANTULA ANTISLIP® rubber outsole.
- External metatarsal protection.

EXCLUSIVELY AT
Mark's



STYLE: HHS222044

SIZES: 7-11,12,13,14

CSA GRADE 1 COMPOSITE TOE, COMPOSITE PLATE. ESR.

These leather boots feature composite toes, composite plates and additional internal toe protection. T-MAX® insulation keeps feet warm while regulating heat and FRESHTECH® controls odours to keep you fresh all day long. The boots are waterproof for protection on outdoor worksites.

8" CTCP Internal Metguard Work Boot

- Waterproof full grain leather upper.
- HELLYTECH® WATERPROOF performance waterproof membrane.
- DRI-TEC lining with FRESHTECH®.
- 200g T-MAX® insulation.
- HELLYGRIP™ rubber outsole.
- Injected polyurethane midsole.
- Removable ETPU footbed.
- Internal metatarsal protection.



EXCLUSIVELY AT
Mark's



STYLE: 2988B

SIZES: 3-11,12,13,14

CSA GRADE 1 STEEL TOE, COMPOSITE PLATE. ESR.

8" "Paladin" CTCP Internal Metguard Work Boot

- Full grain waterproof sealed-seam leather upper with internal metguard.
- Lightweight polyurethane midsole.
- Moisture wicking Aerospace lining with 200g 3M™ THINSULATE™ insulation.
- ANTI-FOD high traction rubber outsole.
- TERRA FIRMA-FLEX™ – 100% Metal Free.





STYLE: 1027693

SIZES: 7-12,13,14

CSA GRADE 1 COMPOSITE TOE, COMPOSITE PLATE. ESR.

8" "Camden" CTCP Internal Metguard Work Boot

- Waterproof leather upper.
- KEEN.DRY® waterproof breathable membrane.
- Breathable mesh lining.
- Removable dual density polyurethane footbed.
- KEEN Luftcell: Air-infused, polyurethane midsole.
- Oil and slip resistant rubber outsole.
- Internal metatarsal protection.



STYLE: TB0A1WUT001

SIZES: 7-12,13,14,15

CSA GRADE 1 COMPOSITE TOE, COMPOSITE PLATE. ESR.

8" "Endurance" CTCP Internal Metguard Work Boot

- Premium waterproof leather upper.
- Waterproof breathable membrane.
- Antimicrobial treated mesh lining.
- Contoured single-density open-cell polyurethane footbed.
- Polyurethane anti-fatigue midsole.
- Timberland PRO® rubber outsole.
- Internal metatarsal protection.



STYLE: TB0A66G7EDW

SIZES: 7-12,13,14,15

CSA GRADE 1 COMPOSITE TOE, COMPOSITE PLATE. ESR.

8" "Boondock" CTCP External Metguard Work Boot

- Premium full grain waterproof leather upper.
- Molded Timberland PRO® rubber toe with 3M™ Scotchlite™ reflective.
- Breathable and moisture wicking lining.
- Removable anti-fatigue PU footbed.
- Timberland PRO® rubber outsole.
- Flexible external metatarsal protection.



MEN'S
6 INCH
BOOTS





DAKOTA
WORKPRO SERIES

STYLE: 5ANBDK4-6200

SIZES: 7-11,12,13,14

CSA GRADE 1 COMPOSITE TOE, COMPOSITE PLATE. ESR.

6" "6200" CTCP Work Boot

- Leather upper.
- FRESHTECH® lining with 200g T-MAX® insulation.
- TARANTULA® ANTI-SLIP rubber outsole, engineered to help prevent slips and falls.
- QUAD COMFORT®, a better way to walk.
- Injected polyurethane midsole.
- Removable polyurethane footbed.
- Assembled in Canada.



EXCLUSIVELY AT
Mark's



DAKOTA
WORKPRO SERIES

STYLE: 5ANBDK2-6100

SIZES: 7-11,12,13,14

CSA GRADE 1 ALUMINUM TOE, COMPOSITE PLATE. ESR.

This boot offers the best innovations, allowing you to be safe and comfortable on the worksite. Easy to wear and slip-on with side gusset and pull-tab features. They support your feet with four comfort components addressing shock absorption, weight distribution, cushioning and pressure displacement. These boots meet CSA Grade 1 requirements for toe and underfoot protection paired with TARANTULA ANTISLIP® outsoles that deliver reliable traction.

6" Pull On ATCP Work Boot

- Full grain leather upper.
- Breathable mesh lining.
- Removable polyurethane footbed.
- Polyurethane midsole.
- QUAD COMFORT®, a better way to walk.
- TARANTULA ANTISLIP® rubber outsole.



EXCLUSIVELY AT
Mark's

DAKOTA**WORKPRO SERIES****STYLE: 5ANBDK2-6101****SIZES: 7-11,12,13,14**

CSA GRADE 1 ALUMINUM TOE, COMPOSITE PLATE. ESR.

This boot offers the best innovations, allowing you to be safe and comfortable on the worksite. Easy to wear and slip-on with side gusset and pull-tab features. They support your feet with four comfort components addressing shock absorption, weight distribution, cushioning and pressure displacement. These boots meet CSA Grade 1 requirements for toe and underfoot protection paired with TARANTULA ANTISLIP® outsoles that deliver reliable traction.

6" Pull On ATCP Work Boot

- Full grain leather upper.
- Elastic gussets.
- Dual pull loops.
- Breathable mesh lining.
- Removable polyurethane footbed.
- Polyurethane midsole.
- **QUAD COMFORT®**, a better way to walk.
- **TARANTULA ANTISLIP®** rubber outsole.

EXCLUSIVELY AT
Mark's**DAKOTA****WORKPRO SERIES****STYLE: 5ANBDK0-6557****SIZES: 7-11,12,13,14,15**

CSA GRADE 1 STEEL TOE, COMPOSITE PLATE. ESR.

6" "6557" STCP Work Boot

- Waterproof full grain leather upper.
- **HYPER-DRI® HD3** waterproof, breathable membrane.
- 200g **T-MAX®** insulation, textile lining with **FRESHTECH®**.
- **QUAD COMFORT®**, a better way to walk.
- Removable polyurethane footbed.
- Poured polyurethane midsole.
- **VIBRAM® FIRE & ICE** rubber outsole.

EXCLUSIVELY AT
Mark's



DAKOTA

WORKPRO SERIES

STYLE: 5ANBDK3-6300

SIZES: 7-11,12,13,14

CSA GRADE 1 COMPOSITE TOE, COMPOSITE PLATE. ESR.

6" "6300" Waterproof CTCP Work Boot

- Full grain leather upper.
- **HYPER-DRI® HD3** waterproof membrane.
- Mesh lining with **DRI-TEC®**.
- 200g **T-MAX®** insulation.
- Internal polyurethane midsole with exterior TPU shell.
- Removable polyurethane footbed.
- **QUAD COMFORT®**, a better way to walk.
- **TARANTULA ANTISLIP®** rubber outsole.

EXCLUSIVELY AT

Mark's



DAKOTA

WORKPRO SERIES

STYLE: 5ANBDK2-6612

SIZES: 7-11,12,13,14

CSA GRADE 1 STEEL TOE, COMPOSITE PLATE. ESR.

Made for general construction applications, these Dakota work boots have the protection of **X-TOE® EXTERNAL SAFETY TOES** that offer safety on the outside and more comfort inside. They feature **T-MAX® INSULATION** that keeps your feet warm and comfortable without overheating. They come with our **QUAD COMFORT®** cushioning and support and **FRESHTECH®** Odour protection technology for all day freshness. These full-feature safety boots meet CSA Grade 1 requirements with steel toes and composite plates.

6" "X-TOE" STCP Work Boot

- Leather upper.
- **QUAD COMFORT®**, a better way to walk.
- Poured polyurethane welt midsole.
- 200g **T-MAX®** insulation.
- Removable polyurethane footbed.
- **TARANTULA ANTISLIP®** rubber outsole.



EXCLUSIVELY AT

Mark's



DAKOTA**WORKPRO SERIES****STYLE:** 5ANBDK3-6611**SIZES:** 7-11,12,13,14

CSA GRADE 1 STEEL TOE, COMPOSITE PLATE. ESR.

Made for general construction applications, these Dakota work boots have the protection of X-TOE® EXTERNAL SAFETY TOES that offer safety on the outside and more comfort inside. T-MAX® INSULATION keeps you warm and helps regulate the temperature of your feet by allowing moisture and excess heat to escape. These boots come with our QUAD COMFORT® cushioning and support and FRESHTECH® odour protection technology for all day freshness. ICEFX® is our leading edge technology for advanced traction on ice.

6" IceFX® X-Toe® STCP Work Boot

- Waterproof leather upper.
- HYPER-DRI® HD3 waterproof membrane.
- Breathable lining with 600g T-MAX® insulation.
- QUAD COMFORT®, a better way to walk.
- Removable polyurethane footbed.
- ICEFX® rubber outsole with Green Diamond and Icelandic grip.

EXCLUSIVELY AT
Mark's**DAKOTA****WORKPRO SERIES****STYLE:** 5ANBDK6-6877**SIZES:** 7-11,12,13,14

CSA GRADE 1 STEEL TOE, STEEL PLATE. ESR.

6" "877" STSP Work Boot

- Buffalo leather upper.
- Breathable air mesh lining with 200g T-MAX® insulation.
- QUAD COMFORT®, a better way to walk.
- Polyurethane injected midsole.
- Removable EVA footbed.
- TARANTULA ANTISLIP® rubber outsole.
- TPU DURATOE® toe guard.

EXCLUSIVELY AT
Mark's



DAKOTA

WORKPRO SERIES

STYLE: 5ANBDK2-6006

SIZES: 7-11,12,13,14,15

CSA GRADE 1 STEEL TOE, COMPOSITE PLATE. ESR.

6" "6006" Quad Comfort[®] STCP Work Boot

- Nubuck leather upper.
- Breathable and moisture wicking Cambrelle lining with 200g T-MAX[®] insulation.
- **QUAD COMFORT[®]**, a better way to walk.
- Removable 4 density EVA Ortholite[®] footbed.
- Direct injected polyurethane midsole.
- **TARANTULA ANTISLIP[®]** rubber outsole.

EXCLUSIVELY AT

Mark's



DAKOTA

WORKPRO SERIES

STYLE: 5ANBDK9-6518

SIZES: 7-11,12,13,14

CSA GRADE 1 STEEL TOE, STEEL PLATE. ESR.

6" "6518" STSP PU/TPU Safety Work Boot

- Nubuck leather upper.
- **DRI-TEC** lining with **FRESHTECH[®]**.
- 200g T-MAX[®] insulation.
- **QUAD COMFORT[®]**, a better way to walk.
- Removable polyurethane foam footbed.
- Polyurethane midsole.
- TPU outsole.

EXCLUSIVELY AT

Mark's



DAKOTA

WORKPRO SERIES

STYLE: 5ANBDK8-6002

SIZES: 7-11,12,13,14,15

CSA GRADE 1 STEEL TOE, STEEL PLATE. ESR.

6" "6002" STSP Leather Work Boot

- Full grain leather upper.
- Breathable lining with 200g T-MAX[®] insulation.
- **QUAD COMFORT[®]**, a better way to walk.
- Injected polyurethane midsole.
- Removable polyurethane footbed.
- **TPU DURATOE[®]** toe guard.
- **TARANTULA ANTISLIP[®]** rubber outsole.

EXCLUSIVELY AT

Mark's



DAKOTA

WORKPRO SERIES

STYLE: 5ANBDK9-6114

SIZES: 7-11,12,13,14,15,16,17

CSA GRADE 1 STEEL TOE, COMPOSITE PLATE. ESR.

6" "6114" Quad Comfort® STCP Work Boot

- Full grain leather upper.
- Lining with FRESHTECH®.
- 200g T-MAX® insulation.
- **QUAD COMFORT®**, a better way to walk.
- Poured polyurethane midsole.
- Multiple density removable polyurethane footbed.
- **TARANTULA ANTISLIP®** rubber outsole.

EXCLUSIVELY AT

Mark's



AGGRESSOR

STYLE: 5ANBDK2-6500

SIZES: 7-11,12,13,14

CSA GRADE 1 STEEL TOE, STEEL PLATE. ESR.

6" STSP Work Boot

- Buffalo Nubuck leather upper.
- Breathable air mesh lining.
- Removable EVA footbed.
- Polyurethane toe guard.

EXCLUSIVELY AT

Mark's



HH
workwear

STYLE: HHS242002

SIZES: 7-11,12,13,14

CSA GRADE 1 STEEL TOE, STEEL PLATE. ESR.

6" STSP Pull On Work Boot

- Leather upper.
- DRI-TEC lining with FRESHTECH®.
- Removable PU footbed.
- **HELLYGRIP™** rubber outsole.

EXCLUSIVELY AT

Mark's



STYLE: HHS243001

SIZES: 7-11,12,13,14

CSA GRADE 1 ALUMINUM TOE, COMPOSITE PLATE. ESR.

6" Ultralight ATCP Work Boot

- Nylon upper with PU synthetic eyestay and heel counter.
- Breathable, moisture wicking **DRI-TEC®** lining with **FRESHTECH®**.
- Removable polyurethane sponge footbed.
- **HELLYGRIP®** rubber outsole.

EXCLUSIVELY AT
Mark's



STYLE: HHS232001

SIZES: 7-11,12,13,14

CSA GRADE 1 STEEL TOE, STEEL PLATE. ESR.

6" STSP Work Boot

- Waterproof leather upper.
- **DRI-TEC®** lining with **FRESHTECH®**.
- Poured polyurethane midsole.
- **HELLYGRIP®** slip resistant rubber outsole.
- Removable polyurethane footbed.

EXCLUSIVELY AT
Mark's



STYLE: HHS243002

SIZES: 7-11,12,13,14

CSA GRADE 1 COMPOSITE TOE, COMPOSITE PLATE. ESR.

6" CTCP Work Boot

- Waterproof full grain leather & action leather upper.
- **HELLYTECH®** Performance waterproof membrane.
- **DRI-TEC** lining.
- 200g **T-MAX®** insulation.
- Removable PU sponge footbed.
- **HELLYGRIP™** rubber outsole.

EXCLUSIVELY AT
Mark's



STYLE: HHS202026

SIZES: 7-11,12,13,14

CSA GRADE 1 COMPOSITE TOE, COMPOSITE PLATE. ESR.

6" CTCP Work Boot

- Full grain leather upper.
- HELLYTECH® WATERPROOF Performance.
- Removable polyurethane footbed.
- TPU toe cap.
- Injected polyurethane midsole.
- HELLYGRIP® rubber outsole.

EXCLUSIVELY AT
Mark's



STYLE: HHS202031

SIZES: 7-11,12,13,14

CSA GRADE 1 COMPOSITE TOE, COMPOSITE PLATE. ESR.

6" CTCP Work Boot

- Waterproof leather upper.
- HELLYTECH® Performance waterproof membrane.
- Injected PU midsole
- Removable PU footbed.
- HELLYGRIP™ rubber outsole.

EXCLUSIVELY AT
Mark's



STYLE: HHS212042

SIZES: 7-11,12,13,14

CSA GRADE 1 COMPOSITE TOE, COMPOSITE PLATE. ESR.

6" CTCP Leather Work Boot

- Waterproof leather upper.
- HELLYTECH® WATERPROOF Performance.
- DRI-TEC lining with FRESHTECH®.
- 200g T-MAX® insulation.
- Removable ETPU footbed.
- HELLYGRIP® rubber outsole.

EXCLUSIVELY AT
Mark's



STYLE: TR0A4NRFBK

SIZES: 7-11,12,13,14

CSA GRADE 1 COMPOSITE TOE, COMPOSITE PLATE. ESR.

6" "Murphy" Slip-On CTCP Work Boot

- Full grain leather upper with elastic gore panels.
- Moisture wicking and abrasion resistant lining.
- **CLEANFeet®** odor management technology.
- Removable polyurethane footbed.
- Slip, heat and acid resistant TPU outsole.
- METAL FREE.



STYLE: TR0A4T8VBLK

SIZES: 7-11,12,13,14,15,16

CSA GRADE 1 COMPOSITE TOE, COMPOSITE PLATE. ESR.

6" "Gantry" Waterproof CTCP Work Boot

- Waterproof leather upper.
- **Hydroguard®** waterproof membrane.
- Moisture wicking lining with **CLEANFeet®** odor management technology.
- Premium comfort PU + eTPU **JETSTRIDE™ FOOTBED®**.
- PU midsole.
- **VIBRAM® FIRE & ICE** outsole.
- Molded **TERRA®** TPU toe bumper.
- **3M™ Scotchlite™** reflective detail for high visibility



STYLE: P720204

SIZES: 7-11,12,13

CSA GRADE 1 COMPOSITE TOE, COMPOSITE PLATE. ESR.

6" "Control" Waterproof CTCP Work Boot

- Full grain leather upper.
- Waterproof breathable membrane.
- 200g **T-MAX®** insulation.
- Slip resistant rubber outsole.
- Removable EVA footbed.
- PVC welt midsole.



STYLE: P724582

SIZES: 7-11,12,13

CSA GRADE 1 COMPOSITE TOE, COMPOSITE PLATE. ESR.

6" "Excavator Superlight" Waterproof CTCP Work Boot

- Nubuck leather upper.
- Waterproof breathable membrane.
- Breathable nylon mesh lining.
- 200g **Thinsulate™** insulation.
- Cushioning polyurethane midsole.
- SRX slip resistant outsole compound with excellent traction and abrasion protection.
- Durable TPU toe guard.



STYLE: P717627

SIZES: 7-11,12,13

CSA GRADE 1 COMPOSITE TOE, COMPOSITE PLATE. ESR.

6" "Hauler" Waterproof CTCP Work Boot

- Full grain leather upper.
- Waterproof breathable membrane.
- Breathable nylon mesh lining.
- 200g **Thinsulate™** insulation.
- Removable Nylex & polyurethane foam footbed.
- Slip and abrasion resistant deep cleated rubber outsole.
- Durable TPU toe guard.



STYLE: P725873

SIZES: 7-11,12,13

CSA GRADE 1 COMPOSITE TOE, COMPOSITE PLATE. ESR.

6" "Hauler XL" Waterproof CTCP Work Boot

- Full grain leather upper.
- Waterproof breathable membrane.
- Breathable Nylon mesh lining.
- 200g **Thinsulate®** insulation.
- Removable Nylex & PU foam footbed.
- Slip & abrasion resistant deep cleated rubber outsole.
- TPU toe guard.
- New PU midsole engineered to be thicker and more comfortable.





STYLE: TB0A5NFT214

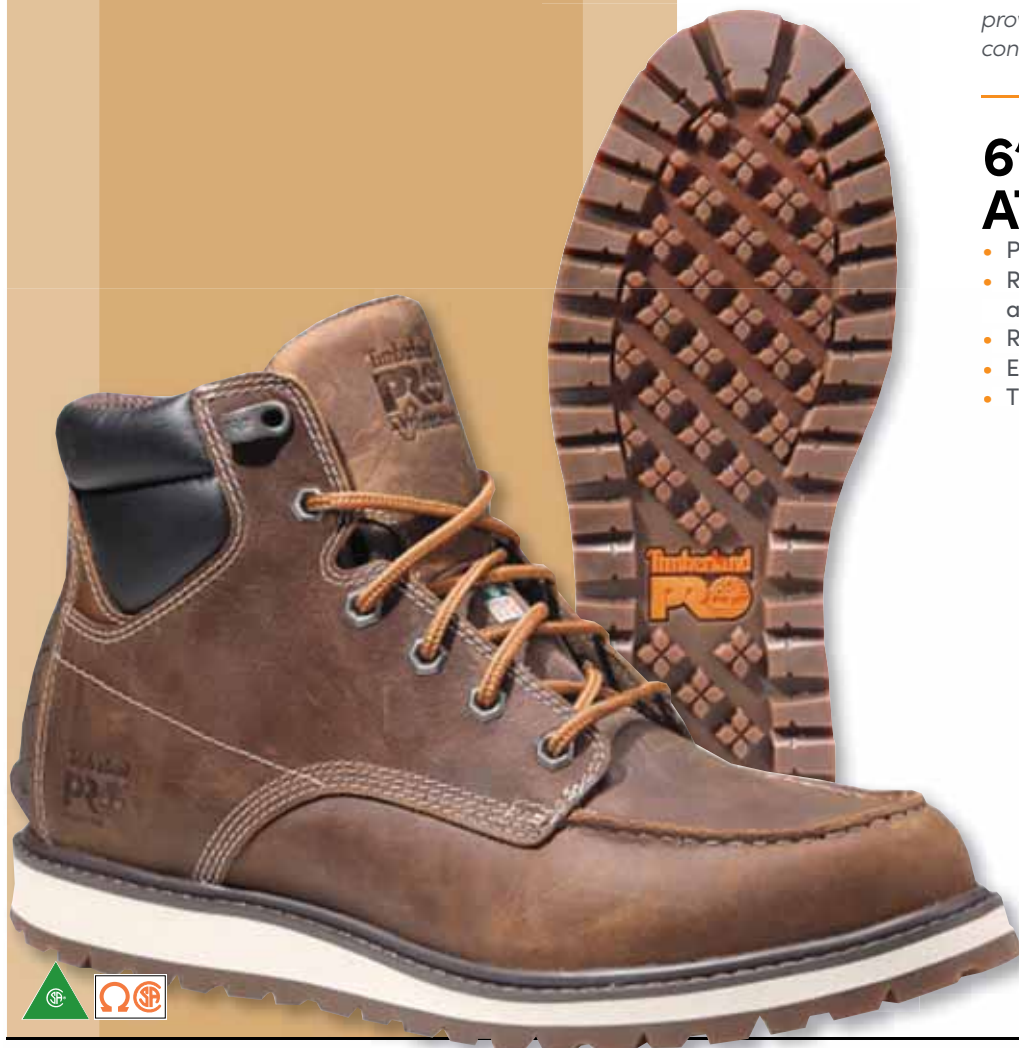
SIZES: 7-11,12,13,14,15

CSA GRADE 1 ALLOY TOE, COMPOSITE PLATE. ESR.

From Timberland PRO, these Irvine Wedge work boots meet CSA Grade 1 standards with aluminum toes and composite plates. They're resistant to puncture and electric shock. With a strong and durable build, the safety boots provide comfort with moisture management-odour control technology and anti-fatigue insoles.

6" "Irvine Wedge" ATCP Work Boot

- Premium full grain leather upper.
- Re-BOTL breathable, antimicrobial and moisture wicking lining.
- Removable anti-fatigue polyurethane footbed.
- EVA midsole.
- Timberland PRO® rubber outsole.



STYLE: TB0A5YHQ231

SIZES: 7-11,12,13,14,15

CSA GRADE 1 ALLOY TOE, COMPOSITE PLATE. ESR.

6" "50th Anniversary Irvine Wedge" CTSP Work Boot

- Premium full grain leather upper.
- Re-BOTL breathable, antimicrobial and moisture wicking lining.
- Timberland PRO® rubber outsole.
- Removable anti-fatigue PU footbed.
- EVA midsole.





STYLE: TB0A5ZZK214
SIZES: 7-11,12,13,14,15
 CSA GRADE 1 ALLOY TOE, STEEL PLATE. ESR.

6" "Nashoba" CTCP Pull On Work Boot

- Premium full grain waterproof leather upper.
- Re-BOTL breathable, antimicrobial and moisture wicking lining.
- Removable anti-fatigue PU footbed.
- Lightweight and abrasion-resistant All-Weather TPU outsole.



STYLE: TB0A5X93214
SIZES: 7-11,12,13,14,15
 CSA GRADE 1 COMPOSITE TOE, STEEL PLATE. ESR.

6" "Endurance EV" CTSP Work Boot

- Premium full grain leather upper.
- Waterproof breathable membrane.
- Re-BOTL breathable, antimicrobial and moisture wicking lining.
- Timberland PRO® rubber outsole.
- TPU & Ever-Guard™ leather reinforcements.



STYLE: TB0A5QJ2231
SIZES: 7-11,12,13,14,15
 CSA GRADE 1 ALLOY TOE, STEEL PLATE. ESR.

6" "50th Anniversary" CTSP Work Boot

- Premium waterproof leather upper.
- Waterproof breathable membrane.
- Re-BOTL breathable, antimicrobial and moisture wicking lining.
- Removable anti-fatigue PU footbed.
- EVA midsole.



STYLE: TBOA22H2231

SIZES: 7-11,12,13,14,15

CSA GRADE 1 ALLOY TOE, STEEL PLATE. ESR.

6" "Iconic" Waterproof ATSP Work Boot

- Premium waterproof leather upper.
- Waterproof breathable membrane.
- Breathable mesh lining with antimicrobial treatment.
- Removable anti-fatigue polyurethane footbed.
- Polyurethane midsole.
- Timberland PRO® rubber outsole.



STYLE: TBOA1Q6R001

SIZES: 7-11,12,13,14,15

CSA GRADE 1 COMPOSITE TOE, COMPOSITE PLATE. ESR.

6" "Endurance HD" CTCP Work Boot

- Premium waterproof leather upper.
- Waterproof, breathable membrane.
- 200g Thermolite® insulation.
- Breathable mesh lining with antimicrobial treatment.
- TimberlandPRO® all-weather TPU outsole.
- Removable anti-fatigue footbed, polyurethane midsole.



STYLE: 91631

SIZES: 7-11,12,13,14,15

CSA GRADE 1 COMPOSITE TOE, COMPOSITE PLATE. ESR.

6" "Boondock" CTCP Waterproof Work Boot

- Premium waterproof leather upper.
- Waterproof, breathable membrane.
- Breathable mesh lining with antimicrobial treatment.
- TimberlandPRO® all-weather TPU outsole.
- Removable anti-fatigue footbed, polyurethane midsole.
- Rubber toe cap.





STYLE: TB0A66KYEM4

SIZES: 7-11,12,13,14,15

CSA GRADE 1 COMPOSITE TOE, COMPOSITE PLATE. ESR.

6" "Boondock Boa" Waterproof CTCP Work Boot

- Premium waterproof leather upper.
- Waterproof breathable membrane.
- Breathable mesh lining with antimicrobial treatment.
- Removable anti-fatigue footbed.
- PU midsole.
- Timberland PRO® all-weather TPU outsole.
- Timberland PRO® rubber toe cap.
- BOA® Fit Lacing system.



STYLE: 1029855

SIZES: 7-12,13,14

CSA GRADE 1 COMPOSITE TOE, COMPOSITE PLATE. ESR.

6" "Evanston" Waterproof CTCP Work Boot

- Waterproof leather upper.
- KEEN.DRY® waterproof breathable membrane.
- Breathable mesh lining.
- Removable anti-fatigue footbed.
- PU midsole.
- Heat resistant rubber outsole.



STYLE: 1023250

SIZES: 7-12,13,14

CSA GRADE 1 COMPOSITE TOE, COMPOSITE PLATE. ESR.

6" "San Jose" ATCP Work Boot

- Waterproof leather upper.
- KEEN.DRY® waterproof breathable membrane.
- Moisture wicking textile lining.
- Removable metatomical polyurethane footbed.
- KEEN Luftcell: Air-infused, polyurethane midsole.
- Oil and slip resistant non-marking rubber outsole.





carhartt

STYLE: CMR6971

SIZES: 8-12,13,14,15

CSA GRADE 1 COMPOSITE TOE, COMPOSITE PLATE. ESR.

6" Leather Rugged Flex CTCP Work Boot

- Full grain leather upper.
- Storm Defender® waterproof, breathable membrane.
- Polyurethane Ortholite® footbed.
- EVA midsole.
- Carhartt rubber **Rugged Flex**® outsole.
- Abrasion resistant rubber toe and heel bumpers.



ROYER

STYLE: 10-8480

SIZES: 5,6,7-11,12,13,14,15

CSA GRADE 1 COMPOSITE TOE, COMPOSITE PLATE. ESR.

6" Metal Free CTCP Work Boot

- Waterproof full grain leather upper with **SHIELDTEX**™ abrasion resistant fabric.
- Waterproof, breathable membrane.
- Breathable, moisture wicking **TAIBRELLE**® lining.
- Removable polyurethane footbed.
- Lightweight, flexible **FLX**™ rubber outsole.
- Metal Free.



ROYER

STYLE: 5630GT

SIZES: 8-11,12,13

CSA GRADE 1 COMPOSITE TOE, COMPOSITE PLATE. ESR.

6" "Agility" Pull On CTCP Work Boot

- Full grain leather upper.
- Unlined upper.
- Comfortable and breathable R-LITE footbed.
- PU midsole.
- Rubber outsole.
- Metal free.





ROYER

STYLE: 8820GT

SIZES: 5,6,7-11,12,13,14,15

CSA GRADE 1 COMPOSITE TOE, COMPOSITE PLATE. ESR.

6" "Revolt" Metal Free CTCP Work Boot

- Waterproof leather upper.
- NANOTOE® carbon fiber toecap.
- Waterproof and breathable R-DRY membrane.
- PU midsole.
- VIBRAM® MEGAGRIP™ PRO rubber outsole.
- Metal free.



Blundstone

STYLE: 163-01

SIZES: 6-12,13,14

CSA GRADE 1 COMPOSITE TOE, COMPOSITE PLATE. ESR.

6" Leather Pull-On CTCP Work Boot

- CSA Grade 1 protective toe cap.
- Weatherproof leather is an industry-leading 2.5 mm thick, yet 'breathes' for absolute comfort.
- Dual-density polyurethane midsole and thermo-polyurethan (TPU) outsole: weatherproof, durable, lightweight and provides reliable certified traction.
- XRD® footbed for all-day comfort and support.
- Puncture resistant mid-soles by Lenzi: lighter, safer, more flexible, more comfortable and warmer than steel.
- Injection molded soles -no adhesives to come unglued, no stitching to rot.
- Heat, slip, oil, acid and electric shock-resistant sole.
- Comfort EVA removable footbed with XRD® in the heel pad.

ONLY AVAILABLE ONLINE AT: markscommercial.com



Blundstone

STYLE: 168-01

SIZES: 6-12,13,14

CSA GRADE 1 COMPOSITE TOE, COMPOSITE PLATE. ESR.

6" Leather Pull-On CTCP Work Boot

- CSA Grade 1 protective toe cap.
- Weatherproof leather is an industry-leading 2.5 mm thick, yet 'breathes' for absolute comfort.
- Dual-density polyurethane midsole and thermo-polyurethan (TPU) outsole: weatherproof, durable, lightweight and provides reliable certified traction.
- XRD® footbed for all-day comfort and support.
- Puncture resistant mid-soles by Lenzi: lighter, safer, more flexible, more comfortable and warmer than steel.
- Injection molded soles -no adhesives to come unglued, no stitching to rot.
- Heat, slip, oil, acid and electric shock-resistant sole.
- Comfort EVA removable footbed with XRD® in the heel pad.

ONLY AVAILABLE ONLINE AT: markscommercial.com





STYLE: 180-01
SIZES: 6-12,13,14

CSA GRADE 1 COMPOSITE TOE, COMPOSITE PLATE. ESR.

6" Leather Pull-On CTCP Work Boot

- CSA Grade 1 protective toe cap.
- Weatherproof leather is an industry-leading 2.5 mm thick, yet 'breathes' for absolute comfort.
- Dual-density polyurethane midsole and thermo-polyurethane (TPU) outsole: flexible, lightweight and durable.
- XRD® footbed for all-day comfort and support.
- Injection molded soles -- no adhesives to come unglued, no stitching to rot.
- Heat, slip, oil, acid and electric shock-resistant sole.
- Heat-formed heel for a snug fit.

ONLY AVAILABLE ONLINE AT: markscommercial.com



STYLE: 968-01
SIZES: 6-12,13,14,15

CSA GRADE 1 COMPOSITE TOE, COMPOSITE PLATE. ESR.

6" Leather Pull-On CTCP Work Boot

- Slip-resistant rubber outsole. CSA approved grade 1 protective toe cap.
- Highly resistant to hydrolysis and microbial attack.
- Heat resistant to 300 °C.
- Oil, acid and organic fat resistant sole. Molded TPU toe guard.
- Premium weatherproof leather upper and elastic sided boot.
- Luxury removable Comfort Arch footbed with XRD® Technology for greater impact absorption and cushioning support for all-day comfort. Footbed is anti-bacterial, washable and breathable.
- Nylon shank ensures correct step flex point, assists with torsional stability.
- Extreme puncture protection that is metal-free and lightweight.

ONLY AVAILABLE ONLINE AT: markscommercial.com



STYLE: 960-02
SIZES: 7-12,13,14,15,16

CSA GRADE 1 COMPOSITE TOE, COMPOSITE PLATE. ESR.

6" Leather Pull-On CTCP Work Boot

- Rubber outsole provides slip-resistance through a combination of design, tread pattern and sole material.
- Highly resistant to hydrolysis and microbial attack. Heat resistant to 300 °C.
- Oil, acid and organic fat resistant sole.
- Premium weatherproof leather upper and elastic sided boot.
- Molded TPU toe guard for added protection.
- Luxury removable Comfort Arch footbed with XRD® Technology for greater impact absorption and cushioning support for all-day comfort.
- Footbed is anti-bacterial, washable and breathable.
- Nylon shank ensures correct step flex point, assists with torsional stability.
- Extreme puncture protection that is metal-free, lightweight and flexible offering optimum penetration resistance.
- Electrical shock resistant sole. CSA approved grade 1 protective toe cap.

ONLY AVAILABLE ONLINE AT: markscommercial.com



MEN'S
HIKER
FOOTWEAR





AGGRESSOR

STYLE: 5ANCAG9-2000

SIZES: 7-11,12,13,14

CSA GRADE 1 STEEL TOE, STEEL PLATE. ESR.

Low-Cut STSP Safety Hiking Shoe

- Polyurethane mesh upper.
- Mesh lining.
- EVA midsole.
- Removable polyurethane footbed.
- Rubber outsole.

EXCLUSIVELY AT
Mark's



AGGRESSOR

STYLE: 5ANCAG9-2300

SIZES: 7-11,12,13,14

CSA GRADE 1 STEEL TOE, STEEL PLATE. ESR.

Mid-Cut STSP Safety Hiking Shoe

- Polyurethane mesh upper.
- Mesh lining.
- EVA midsole.
- Removable polyurethane footbed.
- Rubber outsole.

EXCLUSIVELY AT
Mark's



DAKOTA WORKPRO SERIES

STYLE: 5ANCDK0-2302

SIZES: 7-11,12,13,14

CSA GRADE 1 ALUMINUM TOE, COMPOSITE PLATE. ESR.

Low-Cut Quad Comfort® ATCP Safety Yard Shoe

- Open air mesh and polyurethane upper.
- Breathable mesh lining.
- QUAD COMFORT®, a better way to walk.
- Cushioning EVA midsole.
- Removable footbed.
- TARANTULA ANTISLIP® rubber outsole.

EXCLUSIVELY AT
Mark's



DAKOTA

WORKPRO SERIES

STYLE: 26039MDQC-AS

SIZES: 7-11,12,13,14

CSA GRADE 1 STEEL TOE, STEEL PLATE. ESR.

Mid-Cut Approach STSP Safety Hiker

- Polyurethane Nubuck and nylon mesh upper.
- Breathable PK mesh and foam lining.
- **QUAD COMFORT®**, a better way to walk.
- Cushioning EVA midsole.
- **TARANTULA ANTISLIP®** rubber outsole.

EXCLUSIVELY AT

Mark's



DAKOTA

WORKPRO SERIES

STYLE: 5ANCDK0-2301

SIZES: 7-11,12,13,14

CSA GRADE 1 ALUMINUM TOE, COMPOSITE PLATE. ESR.

Mid-Cut Quad Comfort® ATCP Safety Yard Shoe

- Waterproof Buffalo leather upper.
- **HYPER-DRI® HD3** waterproof, breathable membrane.
- Breathable mesh lining.
- **QUAD COMFORT®**, a better way to walk.
- Cushioning EVA midsole.
- Removable footbed.
- **TARANTULA ANTISLIP®** rubber outsole.

EXCLUSIVELY AT

Mark's



DAKOTA

WORKPRO SERIES

STYLE: 5ANCDK2-2410

SIZES: 7-11,12,13,14,15

CSA GRADE 1 COMPOSITE TOE, COMPOSITE PLATE. ESR.

High Abrasion Low-Cut CTCP Safety Hiker

- High abrasion textile upper.
- Mesh lining.
- **QUAD COMFORT®**, a better way to walk.
- EVA midsole.
- Removable polyurethane footbed.
- **TARANTULA ANTISLIP®** rubber outsole.

EXCLUSIVELY AT

Mark's



DAKOTA

WORKPRO SERIES

STYLE: 5ANCDK2-2411

SIZES: 7-11,12,13,14,15

CSA GRADE 1 COMPOSITE TOE, COMPOSITE PLATE. ESR.

High Abrasion Mid-Cut CTCP Safety Hiker

- High abrasion textile upper.
- Mesh lining.
- **QUAD COMFORT®**, a better way to walk.
- EVA midsole.
- Removable polyurethane footbed.
- **TARANTULA ANTISLIP®** rubber outsole.

LIMITED QUANTITIES

EXCLUSIVELY AT

Mark's



STYLE: HHS231006

SIZES: 7-11,12,13,14

CSA GRADE 1 ALUMINUM TOE, COMPOSITE PLATE. ESR.

Low-Cut ATCP Safety Hiker

- Durable Polyester mesh upper with re-enforced eyestay.
- Breathable mesh lining with **FRESHTECH®**.
- Removable **Ortholite®** footbed.
- **HELLYGRIP®** rubber outsole.

EXCLUSIVELY AT

Mark's



STYLE: HHS231007

SIZES: 7-11,12,13,14

CSA GRADE 1 ALUMINUM TOE, COMPOSITE PLATE. ESR.

Mid-Cut ATCP Safety Hiker

- Durable Polyester mesh upper with re-enforced eyestay.
- Breathable mesh lining with **FRESHTECH®**.
- Removable **Ortholite®** footbed.
- **HELLYGRIP®** rubber outsole.

EXCLUSIVELY AT

Mark's



STYLE: HHS241010
SIZES: 7-11,12,13,14
CSA GRADE 1 ALUMINUM TOE, COMPOSITE PLATE. ESR.

A waterproof mid-cut safety hiker from Helly Hansen, this design features aluminum toes and composite plates along with resistance to electric shock and puncture. These men's safety hikers feature tough uppers made of abrasion-resistant mesh with welded TPU overlays and rubber toe bumpers. Outsoles are designed to improve traction in wet conditions. The work shoes meet CSA Grade 1 safety standards.

Waterproof ATCP Safety Hiker

- Microfibre polyurethane upper.
- **HELLYTECH®** Performance waterproof membrane.
- Moisture wicking air mesh lining.
- EVA midsole / removable comfort footbed.
- **HELLYGRIP™** rubber outsole.



EXCLUSIVELY AT
Mark's



STYLE: HHS211005
SIZES: 7-11,12,13
CSA GRADE 1 COMPOSITE TOE, COMPOSITE PLATE. ESR.

Waterproof CTCP Safety Hiker

- Waterproof full grain leather upper.
- **HELLYTECH® WATERPROOF** Performance waterproof membrane.
- Moisture wicking Air mesh lining.
- EVA midsole.
- Removable comfort footbed.
- **HELLYGRIP®** rubber outsole.



EXCLUSIVELY AT
Mark's



KODIAK®

STYLE: 302123

SIZES: 7-11,12,13,14

CSA GRADE 1 COMPOSITE TOE, COMPOSITE PLATE. ESR.

“Journey” Waterproof CTCP Safety Hiker

- Waterproof leather upper.
- Waterproof breathable membrane.
- Breathable Nylon mesh lining.
- 200g **Thinsulate™** insulation.
- Removable EVA footbed.
- EVA midsole.
- Slip and oil resistant rubber outsole.
- TPU heel guard.
- Rubber toe guard.
- METAL FREE.



KODIAK®

STYLE: KD0A4TELA62

SIZES: 7-11,12,13,14,15

CSA GRADE 1 COMPOSITE TOE, COMPOSITE PLATE. ESR.

“Quest Bound” Waterproof CTCP Mid-Cut Safety Hiker

- Premium waterproof leather upper.
- Waterproof breathable membrane.
- Kodiak **SOS Smell Out Science®** odor control technology.
- **Comfortzone®** footbed with **Ortholite®** comfort foam.
- EVA midsole.
- **VIBRAM®** slip and oil resistant rubber outsole.
- TPU molded toe wrap.



CAT

STYLE: P720996

SIZES: 7-11,12,13

CSA GRADE 1 STEEL TOE, STEEL PLATE. ESR.

“Outline” STSP Leather Safety Hiker

- Full grain leather upper.
- Breathable nylon mesh lining.
- Removable molded EVA footbed.
- Slip resistant rubber outsole.





STYLE: P725173

SIZES: 7-12,13

CSA GRADE 1 STEEL TOE, STEEL PLATE. ESR.

“Accomplice” STSP Waterproof Safety Hiker

- Full grain waterproof leather upper .
- Waterproof breathable membrane.
- Breathable nylon mesh lining.
- Removable EVA footbed.
- Slip resistant rubber outsole.



STYLE: 1027118

SIZES: 7-12,13,14,15

CSA GRADE 1 COMPOSITE TOE, COMPOSITE PLATE. ESR.

“Reno” CTCP Mid Safety Hiker

- Waterproof leather upper.
- KEEN.DRY® waterproof, breathable membrane.
- Moisture wicking mesh lining.
- Removable PU footbed.
- KEEN ReGEN EVA & PU midsole.
- Rubber outsole.



STYLE: 1020096

SIZES: 7-12,13,14,15

CSA GRADE 1 COMPOSITE TOE, COMPOSITE PLATE. ESR.

“Hamilton” CTCP Waterproof Safety Hiker

- Waterproof leather upper.
- KEEN DRY® waterproof, breathable membrane.
- Removable metatomical polyurethane footbed.
- Dual density compression molded EVA and polyurethane midsole.
- Moisture wicking textile lining.
- Oil and slip resistant, non marking rubber outsole.





STYLE: J003345W

SIZES: 7-12,13,14

CSA GRADE 1 COMPOSITE TOE, COMPOSITE PLATE. ESR.

"Jungle Moc" CTCP Safety Shoe

- Nubuck leather upper.
- Breathable mesh lining.
- COMFORTBASE™ contoured footbed.
- COMFORTBASE™ rubberized EVA midsole for increased shock absorption and cushion.
- Merrell M Select™ GRIP oil and slip resistant rubber outsole.
- Protective and abrasion resistant synthetic toe cap.
- Wide fit.



STYLE: J003347W

SIZES: 7-12,13,14

CSA GRADE 1 COMPOSITE TOE, COMPOSITE PLATE. ESR.

"Jungle Moc" CTCP Safety Hiker

- Waterproof full grain leather upper with double stretch gore.
- Breathable mesh lining.
- Removable footbed with mesh cover.
- EVA midsole / rubber outsole.
- Protective abrasion resistant rubber toe cap.



STYLE: J005467W

SIZES: 7-11,12,13,14

CSA GRADE 1 COMPOSITE TOE, COMPOSITE PLATE. ESR.

"Moab Vertex 2" CTCP Waterproof Mid-Safety Hiking Boot

- Waterproof pig suede leather upper.
- Faux fur lining.
- Removable PU footbed with faux fur cover.
- EVA midsole.
- Rubber outsole.





MEN'S
CASUAL
INDUSTRIAL FOOTWEAR



AGGRESSOR

STYLE: 5ANDAG2-3001

SIZES: 7-11,12,13,14

CSA GRADE 1 STEEL TOE, STEEL PLATE. ESR.

STSP Athletic Safety Shoe

- Microfiber and polyurethane upper.
- DRI-TEC lining with FRESHTECH®.
- EVA midsole.
- Removable comfort footbed.
- Rubber outsole.

EXCLUSIVELY AT
Mark's



DAKOTA

WORKPRO SERIES

STYLE: 5ANDDK2-3613

SIZES: 7-11,12,13,14

CSA GRADE 1 STEEL TOE, STEEL PLATE. ESR.

STSP Skate Safety Shoe

- Action Nubuck leather upper.
- DRI-TEC lining with FRESHTECH®.
- Removable comfort footbed.
- TARANTULA ANTISLIP® rubber outsole.

EXCLUSIVELY AT
Mark's



DAKOTA

WORKPRO SERIES

STYLE: 5ANDDK8-3603

SIZES: 7-11,12,13,14

CSA GRADE 1 ALUMINUM TOE, STEEL PLATE. ESR.

"3603" Quad Comfort® Lite ATSP Athletic Safety Shoe

- Mesh upper with welded TPU.
- Breathable mesh lining with FRESHTECH®.
- Injected EVA midsole.
- Removable EVA footbed.
- TARANTULA ANTISLIP® rubber outsole.

EXCLUSIVELY AT
Mark's



DAKOTA

WORKPRO SERIES

STYLE: 5ANDDK6-3617

SIZES: 7-11,12,13,14

CSA GRADE 1 STEEL TOE, STEEL PLATE. ESR.

Quad Comfort® Lite STSP Mid-Cut Athletic Safety Shoe

- High abrasion synthetic upper.
- Breathable lining.
- **QUAD COMFORT®**, a better way to walk.
- Cushioning EVA midsole.
- Removable EVA footbed.
- **TARANTULA ANTISLIP®** rubber outsole.

EXCLUSIVELY AT
Mark's



DAKOTA

WORKPRO SERIES

STYLE: 5ANDDK8-3604

SIZES: 7-11,12,13,14

CSA GRADE 1 ALUMINUM TOE, COMPOSITE PLATE. ESR.

These sporty Dakota safety shoes feature aluminum toes and steel plates to protect your feet from common workplace hazards. The athletic work shoes have Tarantula Anti-Slip™ outsoles which are engineered to help prevent slips and falls. EVA insoles and midsoles combined with our innovative Quad Comfort® Lite cushioning technology provide exceptional comfort at a remarkably light weight.

"3604" Quad Comfort® Lite ATSP Athletic Safety Shoe

- Mesh upper with welded TPU.
- Breathable mesh lining with **FRESHTECH®**.
- Injected EVA midsole.
- Removable EVA footbed.
- **TARANTULA ANTISLIP®** rubber outsole.



EXCLUSIVELY AT
Mark's





DAKOTA

WORKPRO SERIES

STYLE: 5ANDDK2-4000

SIZES: 7-11,12,13,14

CSA GRADE 1 COMPOSITE TOE, COMPOSITE PLATE. ESR.

ATCP Mid-Cut Air Bag Athletic Safety Shoe

- Breathable mesh & synthetic upper.
- Breathable mesh lining.
- **QUAD COMFORT®**, a better way to walk.
- AIRBAG cushioned EVA Midsole.
- Removable PU footbed.
- **TARANTULA ANTISLIP®** rubber outsole.

EXCLUSIVELY AT

Mark's



DAKOTA

WORKPRO SERIES

STYLE: 5ANDDK4-4001

SIZES: 7-11,12,13,14

CSA GRADE 1 ALUMINUM TOE, COMPOSITE PLATE. ESR.

*An athletic-style work boot from Dakota, this design supports your feet with four comfort components addressing shock absorption, weight distribution, cushioning and pressure displacement. They have removable insoles featuring advanced one-way moisture management to keep your feet dry and comfortable. These men's work boots meet CSA Grade 1 requirements for toe and underfoot protection. They're also electric shock resistant. Bottomed out with **TARANTULA ANTISLIP®** rubber outsoles, these boots provide the ultimate in slip protection by reducing the likelihood that you'll slip or fall on wet and/or greasy surfaces.*

ATCP Mid-Cut Air Bag Safety Boots

- Breathable synthetic upper.
- Breathable mesh lining.
- **QUAD COMFORT®**, a better way to walk.
- AIRBAG cushioned EVA midsole.
- Removable polyurethane footbed.
- **TARANTULA ANTISLIP®** rubber outsole.



EXCLUSIVELY AT

Mark's





DAKOTA

WORKPRO SERIES

STYLE: 5ANDDK0-1117QC

SIZES: 7-11,12,13,14,15,16,17

CSA GRADE 1 ALUMINUM TOE, COMPOSITE PLATE. ESR.

Traditional Oxford ATCP Safety Shoe

- Full grain leather upper.
- Polyester lining.
- **QUAD COMFORT®**, a better way to walk.
- Poured polyurethane welt midsole.
- Removable polyurethane footbed.
- Durable soft polyurethane outsole.

EXCLUSIVELY AT

Mark's



DAKOTA

WORKPRO SERIES

STYLE: 5ANDDK0-1119QC

SIZES: 7-11,12,13,14,15,16,17

CSA GRADE 1 ALUMINUM TOE, COMPOSITE PLATE. ESR.

Traditional Oxford ATCP Safety Shoe

- Full grain leather upper.
- Polyester lining.
- **QUAD COMFORT®**, a better way to walk.
- Poured polyurethane welt midsole.
- Removable polyurethane footbed.
- Durable soft polyurethane outsole.

EXCLUSIVELY AT

Mark's



DAKOTA

WORKPRO SERIES

STYLE: 5ANDDK1-3830

SIZES: 7-11,12,13,14

CSA GRADE 1 STEEL TOE, STEEL PLATE. ESR.

Lace-Up Street Sport STSP Athletic Safety Shoe

- Canvas upper.
- Breathable mesh lining with **FRESHTECH®**.
- EVA midsole.
- Removable comfort footbed.
- Rubber outsole.

EXCLUSIVELY AT

Mark's



DAKOTA
WORKPRO SERIES

STYLE: 5ANDDK1-3831
SIZES: 7-11,12,13,14
CSA GRADE 1 STEEL TOE, STEEL PLATE. ESR.

Slip-On Street Sport STSP Athletic Safety Shoe

- Canvas upper.
- Breathable mesh lining with **FRESHTECH®**.
- EVA midsole.
- Removable comfort footbed.
- Rubber outsole.

EXCLUSIVELY AT
Mark's



HH
workwear

STYLE: HHS194002
SIZES: 7-11,12,13,14,15
CSA GRADE 1 ALUMINUM TOE, STEEL PLATE. ESR.

ATSP Welded Athletic Safety Shoe

- High abrasion mesh upper with welded polyurethane overlays for protection.
- Mesh lining.
- Removable **Ortholite®** footbed.
- **HELLYGRIP™** rubber outsole.
- Durable rubber toe guard.

EXCLUSIVELY AT
Mark's



HH
workwear

STYLE: HHS194003
SIZES: 7-11,12,13,14,15
CSA GRADE 1 ALUMINUM TOE, STEEL PLATE. ESR.

Knit Athletic ATSP Safety Shoe

- Knit upper with welded TPU overlays for protection.
- Mesh lining.
- Removable **Ortholite®** footbed.
- **HELLYGRIP™** rubber outsole.
- Durable rubber toe guard.

EXCLUSIVELY AT
Mark's



STYLE: HHS214004

SIZES: 7-11,12,13

CSA GRADE 1 COMPOSITE TOE, COMPOSITE PLATE. ESR.

Waterproof Leather CTCP Safety Oxford

- **HELLYTECH® WATERPROOF** Performance waterproof leather upper.
- Moisture wicking Air mesh lining.
- EVA midsole.
- Removable comfort footbed.
- **HELLYGRIP™** rubber outsole.

EXCLUSIVELY AT
Mark's



STYLE: 108008BLL

SIZES: 7,8-11,12,13

CSA GRADE 1 COMPOSITE TOE, COMPOSITE PLATE. ESR.

"Spider X" CTCP Safety Shoe

- Full grain leather and suede upper.
- Moisture wicking lining with **CLEENFEET®** odour control.
- Removable polyurethane footbed.
- Direct injected single density polyurethane midsole and outsole.
- **METAL FREE.**



STYLE: P726026

SIZES: 7-12,13

CSA GRADE 1 STEEL TOE, STEEL PLATE. ESR.

"Invader" STSP Safety Shoe

- Breathable nylon mesh lining with **CLEANSPOOT.**
- **NXT™** pro-biotic odor control.
- EVA midsole.
- Rubber outsole.



STYLE: P725695

SIZES: 7-12,13,14

CSA GRADE 1 COMPOSITE TOE, COMPOSITE PLATE. ESR.

“Streamline” Athletic CTCP Safety Shoe

- Nylon mesh, polyurethane coated suede.
- Breathable nylon mesh lining.
- ReVive footbed is built with engineered comfort for a contoured fit and support underfoot.
- Slip-resistant, industrial grade rubber outsole.
- **METAL FREE.**



STYLE: P725306

SIZES: 7-11,2,13

CSA GRADE 1 COMPOSITE TOE, COMPOSITE PLATE. ESR.

“Streamline 2.0” Athletic CTCP Safety Shoe

- Nylon mesh, TPU and polyurethane upper.
- Breathable mesh lining.
- SRX slip resistant outsole compound with excellent traction and abrasion protection.
- Removable polyurethane footbed.
- **METAL FREE.**



STYLE: P725307

SIZES: 7-11,12,13

CSA GRADE 1 COMPOSITE TOE, COMPOSITE PLATE. ESR.

“Streamline” Athletic CTCP Safety Shoe

- Full grain leather upper.
- Breathable mesh lining.
- SRX slip resistant outsole compound with excellent traction and abrasion protection.
- Removable polyurethane footbed.
- **METAL FREE.**





STYLE: P726027

SIZES: 7-12,13

CSA GRADE 1 COMPOSITE TOE, COMPOSITE PLATE. ESR.

“Invader Mecha” CTCP Safety Shoe

- Waterproof full grain leather upper.
- Breathable nylon mesh lining with **CLEANSPOOT**.
- **NXT™** pro-biotic odor control
- EVA midsole.
- Rubber outsole.
- **METAL FREE.**



STYLE: TB0A5ZX3001

SIZES: 7-11,12,13,14,15

CSA GRADE 1 STEEL TOE, STEEL PLATE. ESR.

“Intercept” STSP Athletic Safety Shoe

- Mesh upper with abrasion resistant reinforcements.
- **Re-BOTL** breathable, antimicrobial and moisture wicking lining.
- EVA midsole.
- **Timberland PRO® Flex Technology** sole with positioned flex grooves.



STYLE: TB0A61YH065

SIZES: 7-11,12,13,14,15

CSA GRADE 1 STEEL TOE, STEEL PLATE. ESR.

“Intercept” STSP Athletic Safety Shoe

- Mesh upper with abrasion resistant reinforcements.
- **Re-BOTL** breathable, antimicrobial and moisture wicking lining.
- EVA midsole.
- **Timberland PRO® Flex Technology** sole with positioned flex grooves.



STYLE: TB0A66SKEEM

SIZES: 7-11,12,13,14,15

CSA GRADE 1 COMPOSITE TOE, COMPOSITE PLATE. ESR.

From Timberland PRO, these Powertrain safety shoes deliver nonstop comfort and excellent stability on the jobsite. They're constructed with versatile and durable materials such as ground-gripping rubber outsoles, lightweight composite safety toes, and abrasion resistant reinforcements in the toe and heel.

"Powertrain EV" CTCP Safety Shoe

- Durable, breathable ripstop nylon and Raptex upper.
- Breathable and moisture-wicking lining with antimicrobial treatment for odour control.
- Timberland PRO® rubber outsole.
- Metal and mutilation free.



STYLE: TB0A29C6001

SIZES: 7-11,12,13,14,15

CSA GRADE 1 COMPOSITE TOE, COMPOSITE PLATE. ESR.

"Radius" CTCP Athletic Safety Shoe

- Breathable, durable mesh upper with abrasion resistant reinforcements.
- Breathable, moisture wicking lining.
- Removable polyurethane footbed.
- Lightweight HoverSpring foam midsole.
- Timberland PRO® rubber outsole.
- **METAL FREE.**





STYLE: TB0A297S001

SIZES: 7-11,12,13,14,15

CSA GRADE 1 COMPOSITE TOE, COMPOSITE PLATE. ESR.

"Radius" Knit Mid-Cut CTCP Athletic Safety Shoe

- Breathable, durable mesh upper with abrasion resistant reinforcements.
- Breathable, moisture wicking lining with anti-microbial treatment.
- Removable anti-fatigue polyurethane footbed.
- Lightweight HoverSpring foam midsole.
- Timberland PRO® Flex Technology sole with positioned flex grooves.
- METAL FREE.



EXCLUSIVELY AT
Mark's



STYLE: TB0A5TYB001-01

SIZES: 7-11,12,13,14,15

CSA GRADE 1 COMPOSITE TOE, COMPOSITE PLATE. ESR.

"Morphix" Mid-Cut CTCP Safety Shoe

- Abrasion resistant coated leather upper.
- Waterproof breathable membrane.
- Re-BOTL breathable, antimicrobial and moisture wicking lining.
- Lightweight HoverSpring foam midsole.
- Timberland PRO® rubber outsole.
- Removable anti-fatigue polyurethane footbed.
- HoverSpring midsole.



STYLE: 1029360

SIZES: 7-11,12,13,14,15

CSA GRADE 1 CARBON FIBER TOE, COMPOSITE PLATE. ESR.

"Kenton" CTCP Sneaker

- Breathable canvas upper.
- Breathable mesh lining.
- Removable polyurethane footbed.
- KEEN.ReGEN® EVA & polyurethane midsole.
- Heat resistant rubber outsole.





ROYER

STYLE: 602SP2

SIZES: 4,5-11,12,13,14

CSA GRADE 1 ALUMINUM TOE, COMPOSITE PLATE. ESR.

“Inspades” Leather ATCP Safety Shoe

- Full grain leather upper.
- Woven lining with antimicrobial treatment.
- Low density polyurethane footbed with antimicrobial treatment.
- Polyurethane midsole.
- Slip and oil resistant rubber outsole.
- Ultra resistant TECTUFF® toe guard.



ROYER

STYLE: 10-501

SIZES: 4,5-11,12,13,14

CSA GRADE 1 STEEL TOE, COMPOSITE PLATE. ESR.

STCP Safety Shoe

- Full grain leather upper.
- Mesh lining.
- Leather and EVA footbed.
- EVA midsole.
- Oil resistant rubber outsole.



Reebok

STYLE: IB4041

SIZES: 2,3-11,12,13,14,15

CSA GRADE 1 COMPOSITE TOE, COMPOSITE PLATE. ESR.

“SubLite Cushion” CTCP Athletic Safety Shoe

- Microfibre and mesh upper.
- Moisture wicking nylon mesh lining.
- Removable MemoryTech footbed.
- EVA midsole.
- Slip resistant rubber outsole.
- METAL FREE.





Reebok

STYLE: IB4311

SIZES: 8-11,12,13,14,15

CSA GRADE 1 COMPOSITE TOE, COMPOSITE PLATE. ESR.

"Fusion Flexwave" CTCP Athletic Safety Shoe

- Ultraknit and Flexweave™ upper.
- Moisture wicking nylon mesh lining.
- Removable EVA footbed.
- Floatride Energy foam lightweight midsole.
- Slip resistant rubber outsole.
- **METAL FREE.**



Reebok

STYLE: IB3317

SIZES: 7-11,12,13,14,15

CSA GRADE 1 COMPOSITE TOE, COMPOSITE PLATE. ESR.

"Nanoflex TR" CTCP SD Athletic Safety Shoe

- Mesh upper.
- Moisture wicking mesh lining.
- Removable MemoryTech Massage 2.0 cushion footbed.
- EVA midsole.
- Slip resistant rubber outsole.
- **METAL FREE.**



**SKECHERS
WORK**

STYLE: 99993001

SIZES: 7-11,12,13,14

CSA GRADE 1 STEEL TOE, STEEL PLATE. ESR.

STSP Safety Shoe

- PU & mesh upper.
- DRI-TEC lining with FRESHTECH®.
- Cushioning EVA midsole.
- Removable Air cooled memory foam footbed.
- Slip resistant rubber outsole.



EXCLUSIVELY AT
Mark's



SKECHERS
WORK

STYLE: 99999401
SIZES: 7-11,12,13,14
CSA GRADE 1 STEEL TOE, STEEL PLATE. ESR.

**STSP
Safety Shoe**

- Breathable synthetic upper.
- Removable EVA footbed.
- EVA midsole.
- Rubber outsole.

EXCLUSIVELY AT
Mark's



SKECHERS
WORK

STYLE: 99999402
SIZES: 7-11,12,13,14
CSA GRADE 1 STEEL TOE, STEEL PLATE. ESR.

**STSP Athletic
Safety Shoe**

- Breathable upper.
- Removable EVA footbed.
- EVA midsole.
- Rubber outsole.

EXCLUSIVELY AT
Mark's



SKECHERS
WORK

STYLE: 99999403
SIZES: 7-11,12,13,14
CSA GRADE 1 STEEL TOE, STEEL PLATE. ESR.

**STSP Athletic
Safety Shoe**

- Breathable upper.
- Removable EVA footbed.
- EVA midsole.
- Rubber outsole.

EXCLUSIVELY AT
Mark's



SKECHERS
WORK

STYLE: 99999066
SIZES: 7-11,12,13,14
CSA GRADE 1 STEEL TOE, STEEL PLATE. ESR.

STCP Slip-On Safety Shoe

- Action leather & synthetic upper.
- Soft mesh fabric lining.
- Cushioning EVA midsole.
- Removable Air cooled memory foam footbed.
- Slip resistant rubber outsole.

EXCLUSIVELY AT
Mark's



SKECHERS
WORK

STYLE: 99999110
SIZES: 7-11,12,13,14
CSA GRADE 1 STEEL TOE, COMPOSITE PLATE. ESR.

A sturdy shoe to withstand the rigours of the workday, this Skechers design has steel toes and puncture-resistant composite plates. The leather design is built for comfort with cushioned midsoles and Air Cooled Memory Foam insoles. Slip-resistant rubber outsoles add traction in areas that are prone to moisture and grease.

STCP Brown Safety Shoe

- Leather & textile upper.
- Soft mesh fabric lining.
- Cushioning EVA midsole.
- Removable Air cooled memory foam footbed.
- Slip resistant rubber outsole.

EXCLUSIVELY AT
Mark's



MEN'S

STATIC DISSIPATIVE

FOOTWEAR





DAKOTA

WORKPRO SERIES

STYLE: 5ANDDK9-3200

SIZES: 7-11,12,13,14,15

CSA GRADE 1 ALUMINUM TOE, SD.

SD Lace-Up Leather Safety Shoe

- Leather upper.
- Breathable lining with **FRESHTECH®**.
- **QUAD COMFORT®**, a better way to walk.
- Compression molded EVA midsole.
- Removable polyurethane footbed.
- Rubber outsole.
- **STATIC DISSIPATIVE.**



EXCLUSIVELY AT
Mark's



DAKOTA

WORKPRO SERIES

STYLE: 5ANDDK9-3201

SIZES: 7-11,12,13,14,15

CSA GRADE 1 ALUMINUM TOE, SD.

From Dakota, these leather safety shoes have aluminum toes and they're static dissipative. These shoes feature our Freshtech® Odour protection technology for all day freshness. It inhibits the growth of fungi, mold and mildew, in addition to odour-causing bacteria. Contoured EVA insoles and rubber outsoles provide underfoot support.

SD Slip-On Leather Safety Shoe

- Leather upper.
- Breathable lining with **FRESHTECH®**.
- **QUAD COMFORT®**, a better way to walk.
- Compression molded EVA midsole.
- Removable polyurethane footbed.
- Rubber outsole.
- **STATIC DISSIPATIVE.**



EXCLUSIVELY AT
Mark's

Timberland PRO

STYLE: TB0A2A55001

SIZES: 7-11,12,13,14,15

CSA GRADE 1 COMPOSITE TOE, COMPOSITE PLATE, SD.

An athletically-styled work shoe from Timberland PRO, they can take on the toughest job sites while keeping your feet protected. This pair is made of breathable mesh with a moisture-wicking lining for comfort on the job. Compliant with CSA Grade 1 safety requirements, the shoes provide support, durability and flexibility.

Pro Radius SD CTCP Athletic Safety Shoe

- Breathable durable mesh upper with abrasion-resistant reinforcements.
- Cement construction for durability.
- Pull loop.
- Breathable and moisture-wicking lining.
- Removable anti-fatigue polyurethane insole: Provides shock absorption and energy return.
- Lightweight HOVERSPRING™ Foam midsole: Fuel and oil resistant, providing industry-leading underfoot comfort, flexibility and durability.
- **TIMBERLAND PRO® FLEX TECHNOLOGY:** Rubber outsole features anatomically positioned flex grooves.
- Elasticized laced panel. Pull-on style.

SAFETY FIRST: CSA Grade 1 asymmetrical composite toe, puncture resistant composite plate. SD protection.

EXCLUSIVELY AT
Mark's

SKECHERS
WORK

STYLE: 77A77068

SIZES: 7-11,12,13,14

CSA GRADE 1 ALUMINUM TOE, STEEL PLATE. SD.

ATSP Slip Resistant Athletic Safety Shoe

- Leather & synthetic upper.
- Soft mesh fabric lining.
- Cushioning EVA midsole.
- Removable Air cooled memory foam footbed.
- Slip resistant rubber outsole.
- **STATIC DISSIPATIVE.**

EXCLUSIVELY AT
Mark's

MEN'S
ANTI-SLIP
FOOTWEAR





AGGRESSOR

STYLE: 5ANDAG2-3400

SIZES: 7-11,12,13

NON-SAFETY.

Non-Safety Lace Up Oxford

- Microfiber and polyurethane upper.
- DRI-TEC lining with FRESHTECH®.
- Removable EVA footbed.
- Slip resistant rubber outsole.

NON-SAFETY



AGGRESSOR

STYLE: 5ANDAG2-3401

SIZES: 7-11,12,13

NON-SAFETY.

Non-Safety Slip-On Shoe

- Microfiber and polyurethane upper.
- DRI-TEC lining with FRESHTECH®.
- Removable EVA footbed.
- Slip resistant rubber outsole.

NON-SAFETY



AGGRESSOR

STYLE: 5ANDAG2-3403

SIZES: 7-11,12,13

NON-SAFETY.

Non-Safety Lace-Up Shoe

- Microfiber and polyurethane upper.
- DRI-TEC lining with FRESHTECH®.
- Removable EVA footbed.
- Slip resistant rubber outsole.

NON-SAFETY



DAKOTA

WORKPRO SERIES

STYLE: 5ANDDK0-3025

SIZES: 7-11,12,13,14

NON-SAFETY.

Non-Safety Slip-On Shoe

- Microfiber and polyurethane upper.
- Breathable mesh lining with **FRESHTECH®**.
- **QUAD COMFORT®**, a better way to walk.
- Cushioning EVA midsole.
- Removable EVA footbed.
- **TARANTULA ANTI-SLIP®** rubber outsole.

NON-SAFETY

EXCLUSIVELY AT

Mark's



DAKOTA

WORKPRO SERIES

STYLE: 5ANDDK0-3026

SIZES: 7-11,12,13,14

NON-SAFETY.

Non-Safety Lace-Up Shoe

- Microfiber and polyurethane upper.
- Breathable mesh lining with **FRESHTECH®**.
- **QUAD COMFORT®**, a better way to walk.
- Cushioning EVA midsole.
- Removable EVA footbed.
- **TARANTULA ANTI-SLIP®** rubber outsole.

NON-SAFETY

EXCLUSIVELY AT

Mark's



DAKOTA

WORKPRO SERIES

STYLE: 5ANDDK0-3027

SIZES: 7-11,12,13,14

NON-SAFETY.

Non-Safety Skate Shoe

- Microfiber and polyurethane upper.
- Breathable mesh lining with **FRESHTECH®**.
- **QUAD COMFORT®**, a better way to walk.
- Cushioning EVA midsole.
- Removable EVA footbed.
- **TARANTULA ANTI-SLIP®** rubber outsole.

NON-SAFETY

EXCLUSIVELY AT

Mark's



DAKOTA
WORKPRO SERIES

STYLE: 5ANDDK3-3028
SIZES: 7-11,12,13,14
NON-SAFETY.

Non-Safety Athletic Shoe

- TPU and mesh upper.
- Breathable lining with DRI-TEC®.
- QUAD COMFORT®, a better way to walk.
- Removable EVA footbed.
- TARANTULA ANTI-SLIP® rubber outsole.

NON-SAFETY

EXCLUSIVELY AT
Mark's



DAKOTA
WORKPRO SERIES

STYLE: 5ANDDK3-3029
SIZES: 7-11,12,13,14
NON-SAFETY.

Non-Safety Canvas Shoe

- Canvas upper.
- Breathable lining with DRI-TEC®.
- QUAD COMFORT®, a better way to walk.
- Removable EVA footbed.
- TARANTULA ANTI-SLIP® rubber outsole.

NON-SAFETY

EXCLUSIVELY AT
Mark's



DAKOTA
WORKPRO SERIES

STYLE: 5ANDDK0-3020
SIZES: 7-11,12,13,14
CSA GRADE 1 STEEL TOE, STEEL PLATE. ESR.

STSP Slip-On Shoe

- Microfiber and polyurethane upper.
- Breathable mesh lining with FRESHTECH®.
- QUAD COMFORT®, a better way to walk.
- Cushioning EVA midsole.
- Removable EVA footbed.
- TARANTULA ANTI-SLIP® rubber outsole.

EXCLUSIVELY AT
Mark's



DAKOTA
WORKPRO SERIES

STYLE: 5ANDDK0-3021
SIZES: 7-11,12,13,14
CSA GRADE 1 STEEL TOE, STEEL PLATE. ESR.

STSP Lace-Up Shoe

- Microfiber and polyurethane upper.
- Breathable mesh lining with **FRESHTECH**®.
- **QUAD COMFORT**®, a better way to walk.
- Cushioning EVA midsole
- Removable EVA footbed.
- **TARANTULA ANTI-SLIP**® rubber outsole.

EXCLUSIVELY AT
Mark's



DAKOTA
WORKPRO SERIES

STYLE: 5ANDDK0-3023
SIZES: 7-11,12,13,14
CSA GRADE 1 STEEL TOE, STEEL PLATE. ESR.

STSP Lace-Up Oxford

- Microfiber and polyurethane upper.
- Breathable mesh lining with **FRESHTECH**®.
- **QUAD COMFORT**®, a better way to walk.
- Cushioning EVA midsole
- Removable EVA footbed.
- **TARANTULA ANTI-SLIP**® rubber outsole.

EXCLUSIVELY AT
Mark's



SKECHERS
WORK

STYLE: 77156
SIZES: 7-12,13,14
NON-SAFETY.

"Napa SR" Non-Safety Anti-Slip Shoe

- Skechers **Memory Foam**™ cushioned comfort footbed.
- **Relaxed Fit**® design for a roomy comfortable fit.
- Smooth synthetic upper.
- Slip-resistant traction outsole with oil resistance.

NON-SAFETY



SKECHERS
WORK

STYLE: 200205-BBK

SIZES: 7-11,12,13,14

NON-SAFETY.

"Summits" Non-Safety Slip-Ins Anti-Slip Shoe

- Knit mesh and synthetic upper.
- Skechers Hands Free Slip-ins™ molded heel panel for easy fit.
- Slip resistant traction rubber outsole.
- Skechers Air-Cooled Memory Foam® footbed.

NON-SAFETY



SKECHERS
WORK

STYLE: 77048

SIZES: 7-12,13,14,15,16

NON-SAFETY.

Slip on these Skechers Flex Advantage McAllen casual shoes when you want a great fit and all-day comfort. The durable synthetic uppers are water and stain resistant. They feature diamond-patterned mesh fabric panels with mesh fabric linings for optimized breathability. The FlexSole midsoles absorb shock, and the removable memory foam insoles provide cushioning. The relaxed-fit design ensures you have roomy comfort all day long. Both sides of these sporty shoes have fabric panels for a great fit, and the outsoles are slip-resistant to give you traction.

"Flex Advantage McAllen" Non-Safety Anti-Slip Shoe

- Flexsole shock-absorbing lightweight midsole.
- Removable memory foam footbed.
- Soft mesh fabric lining.
- Durable synthetic upper.
- Slip resistant rubber outsole.

NON-SAFETY

MEN'S
TACTICAL
FOOTWEAR





MAGNUM

STYLE: 5440
SIZES: 4-12,13,14,15
 NON-SAFETY.

Stealth Force II 8.0 Leather Safety Shoe

- Full grain/Magna shield leather and denier nylon upper delivers ultimate performance, durability and flexibility.
- Durable non-metal, anti glare hardware is tough, lightweight, scratch resistant and airport safe.
- Ankle and fore-foot pads offer added impact protection and support.
- Impact Power breathable PU contoured sock liner.
- RECOIL midsole absorbs impact and provides all-day support and comfort.
- Composite shank offers lightweight, airport safe underfoot support.
- High traction, slip and oil resistant, Michelin outsole for maximum grip.
- Impact Power breathable polyurethane contoured sockliner.

NON-SAFETY

MAGNUM

STYLE: 5402
SIZES: 4-12,13,14,15
 CSA GRADE 1 COMPOSITE TOE, COMPOSITE PLATE. ESR.

The updated and upgraded version of the popular Stealth Force has arrived. Offering more branded components, new technology and longer lasting comfort!.

Stealth Force II 8.0 CTCP

- Full grain/Magna shield leather and denier nylon upper delivers ultimate performance, durability and flexibility.
- Durable non-metal, anti glare hardware is tough, lightweight, scratch resistant and airport safe.
- Ankle and fore-foot pads offer added impact protection and support.
- Impact Power breathable PU contoured sock liner.
- RECOIL midsole absorbs impact and provides all-day support and comfort.
- Composite shank offers lightweight, airport safe underfoot support.
- High traction, slip and oil resistant, Michelin outsole for maximum grip.
- Impact Power breathable polyurethane contoured sockliner.
- CSA certified composite toe and plate.





MAGNUM

STYLE: 5419

SIZES: 4-12,13,14,15

CSA GRADE 1 COMPOSITE TOE, COMPOSITE PLATE. ESR..

Stealth Force II 8.0 CTCP SZ WP

- Full grain/Magna shield leather and denier nylon upper.
- Durable non-metal, anti glare hardware is tough, lightweight, scratch resistant and airport safe.
- YKK circular side zip
- Ankle and fore-foot pads offer added impact protection and support.
- Impact Power breathable polyurethane contoured sock liner.
- RECOIL midsole absorbs impact and provides all-day support and comfort.
- Composite shank offers lightweight, airport safe underfoot support.
- High traction, slip and oil resistant, Michelin outsole for maximum grip.
- Waterproof and breathable bootie membrane.
- Impact Power breathable PU contoured sockliner.



MAGNUM

STYLE: 5448

SIZES: 4-12,13,14,15

NON-SAFETY..

Stealth Force II 6.0

- Full grain/Magna shield leather and denier nylon upper delivers ultimate performance, durability and flexibility.
- Durable non-metal, anti glare hardware is tough, lightweight, scratch resistant and airport safe.
- Ankle and fore-foot pads offer added impact protection and support.
- Impact Power breathable PU contoured sock liner.
- RECOIL midsole absorbs impact and provides all-day support and comfort.
- Composite shank offers lightweight, airport safe underfoot support.
- High traction, slip and oil resistant, Michelin outsole for maximum grip.
- Impact Power breathable PU contoured sockliner.

NON-SAFETY



MAGNUM

STYLE: 5420

SIZES: 4-12,13,14,15

CSA GRADE 1 COMPOSITE TOE, COMPOSITE PLATE. ESR..

Stealth Force II 6.0 CTCP SZ WP

- Full grain/Magna shield leather and denier nylon.
- Durable non-metal, anti glare hardware is tough, lightweight, scratch resistant and airport safe.
- YKK circular side zip.
- Ankle and fore-foot pads offer added impact protection and support.
- Impact Power breathable PU contoured sock liner.
- RECOIL midsole absorbs impact and provides all-day support and comfort.
- Composite shank offers lightweight, airport safe underfoot support.
- High traction, slip and oil resistant, Michelin outsole for maximum grip.
- Waterproof and breathable bootie membrane.
- Impact Power breathable polyurethane contoured sockliner.





MEN'S
WET WEATHER
FOOTWEAR





AGGRESSOR

STYLE: 5ANEAG2-9500

SIZES: 7-13 Full Sizes Only

CSA GRADE 1 STEEL TOE, STEEL PLATE.ESR.

STSP Insulated Wet Weather Boot

- Waterproof molded TPO upper.
- Wool blend liner is tested to a comfort rating -20°C-30°C.
- Long wearing, self cleaning outsole.

LINER AVAILABLE 5ANFAG3-01LNR



EXCLUSIVELY AT
Mark's



AGGRESSOR

STYLE: 5ANEAG2-9600

SIZES: 7-13 Full Sizes Only

NON-SAFETY.

NST Insulated Wet Weather Boot

- Waterproof molded TPO upper.
- Wool blend liner is tested to a comfort rating -20°C-30°C.
- Long wearing, self cleaning outsole.

LINER AVAILABLE 5ANFAG3-01LNR

NON-SAFETY

EXCLUSIVELY AT
Mark's



DAKOTA WORKPRO SERIES

STYLE: 5ANDK3-9860

SIZES: 7-13 Full Sizes Only

NON-SAFETY.

NST Syntrol Premium Injected Boot

- Thermoplastic Rubber upper.
- Unlined.
- Premium poured polyurethane footbed.
- Thermoplastic Rubber midsole, outsole.

NON-SAFETY

EXCLUSIVELY AT
Mark's



DAKOTA

WORKPRO SERIES

STYLE: 5ANEDK3-9850

SIZES: 7-13 Full Sizes Only

CSA GRADE 1 STEEL TOE, STEEL PLATE.ESR.

STSP Syntrol Premium Injected Boot

- Thermoplastic Rubber upper.
- Unlined.
- Poured polyurethane footbed.
- Thermoplastic Rubber midsole, outsole.

EXCLUSIVELY AT
Mark's



HH
workwear

STYLE: HHF234011

SIZES: 5-14 Full Sizes Only

NON-SAFETY.

Non-Safety Polyurethane Boot

- Polyurethane upper.
- Comfort Rating -20° to -30°C.
- Removable polyurethane footbed.

NON-SAFETY

EXCLUSIVELY AT
Mark's



HH
workwear

STYLE: HHF234012

SIZES: 7-14 Full Sizes Only

CSA GRADE 1 STEEL TOE, STEEL PLATE. ESR.

STSP Polyurethane Boot

- Polyurethane upper.
- Comfort Rating -20° to -30°C.
- Removable polyurethane footbed.

EXCLUSIVELY AT
Mark's



STYLE: HHS222010
SIZES: 7-14 Full Sizes Only
CSA GRADE 1 STEEL TOE, STEEL PLATE. ESR.

STSP Wet Weather Safety Boot

- Polyurethane and Neoprene Upper.
- Spacer mesh lining with **FRESHTEC®**.
- Neoprene insulation.
- Removable PU footbed.
- Wrapped EPTU midsole with **HELLYGRIP™** rubber outsole.

EXCLUSIVELY AT
Mark's



STYLE: HHF196120
SIZES: 7-14 Full Sizes Only
CSA GRADE 1 STEEL TOE, STEEL PLATE. ESR.

Featuring a fully-sealed shell, these Helly Hansen Workwear boots are ideal for outdoor and indoor wet environments. They have heavily lugged rubber outsoles for improved traction. These boots meet CSA Grade 1 requirements for toe protection and resistance to puncture and electric shock.

STSP Polyurethane Work Boot

- Polyurethane upper.
- Comfort Rating -20° to -30°C.
- **HELLYGRIP®** rubber outsole provides high traction in wet environments.
- Polyurethane footbed for added comfort.

EXCLUSIVELY AT
Mark's



STYLE: HHF236121
SIZES: 7-14 Full Sizes Only
 CSA GRADE 1 STEEL TOE, STEEL PLATE. ESR.

STSP Cold Weather Polyurethane Boot

- Polyurethane upper.
- Nylon lining.
- Removable polyurethane footbed.

EXCLUSIVELY AT
Mark's



STYLE: LICO-M001
SIZES: 7-14 Full Sizes Only
 NON-SAFETY.

"Blackhawk" Non-Safety Wet Weather Boot

- Lightweight Thermal Rubber (TR) compound upper.
- Unlined.
- Removable comfort footbed.
- Self-cleaning outsole with TPR outsole.

NON-SAFETY



STYLE: LICO-MP01
SIZES: 7-15 Full Sizes Only
 CSA GRADE 1 STEEL TOE, STEEL PLATE. ESR.

"Blackhawk" STSP Wet Weather Boot

- Lightweight Thermal Rubber (TR) compound upper.
- Unlined.
- Removable comfort footbed.
- Self-cleaning outsole with TPR outsole.



STYLE: 8564
SIZES: 6-14 Full Sizes Only
 CSA GRADE 1 STEEL TOE, STEEL PLATE. ESR.

“Hunter” STSP Felt Lined Rubber Boot

- Fully moulded Arctic™ rubber upper provides cold-resistance and resilience.
- Removable Tri-Fit multi-layer liner for insulation and heat regulation.
- Nylon Snow collar to protect from the elements.
- Lightweight and flexible Arctic Rubber self-cleaning outsole.



STYLE: 9699
SIZES: 7-14 Full Sizes Only
 CSA GRADE 1 STEEL TOE, STEEL PLATE. ESR.

“Maximum” STSP Oarprene Boot

- Molded seamless Oarprene upper.
- Generous wider fit.
- Comfort crafted footbed.
- Gelflex fatigue resistant midsole.
- Oil and acid resistant, self cleaning outsole.



STYLE: LJ2HX42
SIZES: 5-14 Full Sizes Only
 CSA GRADE 1 STEEL TOE, STEEL PLATE. ESR.

“RigPro” STSP Boot

- Durable waterproof Purofort® upper.
- Polyurethane outsole.
- Fit perfected with Dunlop’s innovative Snug-fit construction to eliminate heel slippage.



STYLE: PB661841MWCSA
SIZES: 6-15 Full Sizes Only, (excl. 12)
 CSA GRADE 1 STEEL TOE, STEEL PLATE, SD.

“Purofort Thermo+” STSP Polyurethane Boot

- Lightweight, long wearing polyurethane upper.
- Thermo+ extreme cold weather lining.
- Polyurethane outsole provides high traction in wet environments.
- Premium footbed.
- Static dissipative.



STYLE: LPLKL01
SIZES: 5-15 Full Sizes Only
 CSA GRADE 1 COMPOSITE TOE, COMPOSITE PLATE, ESR.

These cold weather boots feature the Thermo+ extreme cold weather lining for comfortable warmth. They're equipped with a steel toe and plate and outsoles that provide exceptional traction on slippery surfaces. Stronger and lighter than traditional rubber boots, these PU boots are designed for work on oil rigs and petroleum refineries.

“Fieldpro” Thermoplus CTCP Boot

- Waterproof Purofort polyurethane upper.
- Sneaker fit eliminates heel slippage.
- **FIELDPRO THERMO+** insulation.
- Removable footbed.
- Injected polyurethane midsole.
- Polyurethane outsole with tread wear indicators.
- Comfort rating -60°C.



EXCLUSIVELY AT
Mark's



STYLE: E902033
SIZES: 5-15 Full Sizes Only
 CSA GRADE 1 STEEL TOE, STEEL PLATE. ESR.

“Explorer” Vibram® STSP Polyurethane Boot

- Flexible Purofort upper.
- Dunlop branded red welded lining.
- Thermal insulation up to -20°C.
- Premium footbed.
- Dirt-repellant, oil resistant, slip resistant **VIBRAM® FIRE & ICE** outsole with wide lugs and ladder grip for extra stability.



STYLE: TR113001BLK-1
SIZES: 8-16 Full Sizes Only
 CSA GRADE 1 COMPOSITE TOE, COMPOSITE PLATE.

“Narvik” Metguard CTCP Boot

- Thermal polyurethane upper.
- **XRD®** internal metatarsal protection.
- Moisture wicking neo-spacer lining.
- Premium single-density polyurethane footbed.
- Heavy duty all terrain rubber outsole.
- Internal metatarsal protection.



STYLE: A1305B-11
SIZES: 6-17 Full Sizes Only
 NON-SAFETY.

Low-Cut Wide Fit Overshoe

- Waterproof natural rubber.
- Knit lining.
- Short tongue covering the laces.
- Extra large last for boots with metatarsal guard and very thick outsole.

NON-SAFETY



STYLE: 3186-11A
SIZES: 6-15 Full Sizes Only
 NON-SAFETY.

Single Strap Work Boot Overshoe

- Rubber upper.
- Unlined.
- Rubber outsole.

NON-SAFETY



STYLE: N5P3
SIZES: S-4XL
 NON-SAFETY.

“Gaitor” Overshoe Work Boot Overshoe

- Durable polyester upper with waterproof membrane .
- Expandable gaiter top can roll-out to increase boot height to 20 inches.
- 4mm Polyurethane foam insulation.
- Aggressive Vibram® Ninja™ outsole offers superior traction on ice, snow and slush.

NON-SAFETY



STYLE: N5P3G
SIZES: S-4XL
 NON-SAFETY.

Non-Safety “gaitor” Waterproof Overshoe

- Durable polyester upper with waterproof membrane.
- Expandable gaiter top can roll-out to increase boot height to 20 inches.
- 4mm Polyurethane foam insulation.
- Multi directional lugged outsole provides traction in snow and uneven terrain.
- Comes with 16 replaceable cleats per pair.

NON-SAFETY

To reduce the likelihood
of slipping and falling
this winter
we suggest wearing...

ICEFX®

ICELANDIC GRIP®
Abrasive fibre-like
material designed
to grip on wet ice.

ICEFX®

Leading-edge technology features an innovative tread design to provide greater surface contact in the heel strike zone and forefoot to achieve an anti-slip outsole. The outsole uses a softer, more flexible rubber compound that performs in the cold and incorporates gripping pods to provide advanced traction. ICEFX® may also utilize other compounds or materials in the outsole to help achieve slip resistance on ice. Constant research is explored to search for new and better materials to provide a "Safer Way to Walk on Ice".

DISCLAIMER: ICEFX® provides enhanced traction on ice but does not guarantee slips will not occur under any circumstances. Care should always be taken when walking on ice.

GREEN DIAMOND® grip

Synthetic quartz
embedded into the
rubber for effective grip
on all ice surfaces.

Mark's
COMMERCIAL



MEN'S
WINTER
FOOTWEAR

AGGRESSOR

STYLE: 5ANFAGW0-8910
SIZES: 7-14 Full Sizes Only
CSA GRADE 1 STEEL TOE, STEEL PLATE. ESR.

Winter Transitional STSP Winter Work Boot

- Polyurethane Nubuck upper.
- DRI-TEC lining with 200g T-MAX® insulation.
- Flat molded shell.
- Rubber outsole.

LINER AVAILABLE 5ANFAG3-01LNR

EXCLUSIVELY AT
Mark's

DAKOTA WORKPRO SERIES

STYLE: 5ANFDKW2-8907
SIZES: 7-14 Full Sizes Only
CSA GRADE 1 COMPOSITE TOE, COMPOSITE PLATE. ESR.

"8907" ICEFX® TRANSITIONAL CTCP Winter Work Boot

- Action leather upper with TPU full shell.
- Mesh lining with 400g T-MAX® insulation.
- Removable comfort footbed.
- EVA midsole.
- ICEFX® rubber outsole with GREEN DIAMOND® & Icelandic grip.

EXCLUSIVELY AT
Mark's

DAKOTA WORKPRO SERIES

STYLE: 5ANFDKW3-8901
SIZES: 7-15 Full Sizes Only
CSA GRADE 1 COMPOSITE TOE, COMPOSITE PLATE. ESR.

"8901" CTCP Winter Work Boot

- Diesel & oil resistant waterproof full grain leather upper.
- HYPER-DRI® HD3 waterproof, breathable membrane.
- 400g T-MAX® insulation.
- Removable liner system.
- TPU DURATOE® Guard.
- ICEFX® rubber outsole with GREEN DIAMOND® Technology.

LINER AVAILABLE 5ANF7-LNR-8901

EXCLUSIVELY AT
Mark's



DAKOTA

WORKPRO SERIES

STYLE: 5ANFDKW4-8911

SIZES: 7-14 Full Sizes Only

CSA GRADE 1 COMPOSITE TOE, COMPOSITE PLATE. ESR.

Thermalectric® Heated CTCP Winter Work Boot

- Diesel & oil resistant waterproof full grain leather upper.
- **HYPER-DRI® HD3** waterproof, breathable membrane.
- 400g **T-MAX®** INSULATION.
- Removable liner system with **THERMALECTRIC®** heated technology.
- **QUAD COMFORT®**, a better way to walk.
- 6MM frost plug helps keep feet dry and warm.
- **ICEFX®** rubber outsole with **GREEN DIAMOND®** technology.
- Molded **TPU DURATOE®**.

EXCLUSIVELY AT

Mark's



DAKOTA

WORKPRO SERIES

STYLE: 5ANFDKW8-8530

SIZES: 7-14 Full Sizes Only

CSA GRADE 1 STEEL TOE, STEEL PLATE. ESR.

Fitted with Propac removable felt liners, these Dakota work boots are built to protect your feet in extreme cold environments. They feature our T-MAX® light and warm insulation. The boots meet CSA Grade 1 standards with steel toes and plates which are electric shock and puncture resistant. Stoppered drawcords in the topline help keep debris and moisture out and tough rubber outsoles provide sound footing on various surfaces.

"8530" STSP Winter Felt Pack Winter Boot

- Textile upper.
- Lightweight EVA Shell.
- Removable liner with 200g **T-MAX®** insulation.
- **QUAD COMFORT®**, a better way to walk.
- Rubber outsole.
- Comfort Rating -50°C to -60°C.

LINER AVAILABLE LNR-8530DWG

EXCLUSIVELY AT

Mark's



DAKOTA

WORKPRO SERIES

STYLE: 5ANFDKW8-8527

SIZES: 7-14 Full Sizes Only

CSA GRADE 1 STEEL TOE, STEEL PLATE. ESR.

"8527" STSP Leather Felt Pack Winter Boot

- Waterproof leather upper.
- Lightweight EVA Shell.
- Removable liner with 200g T-MAX® insulation.
- ICEFX® rubber outsole with GREEN DIAMOND® technology.
- QUAD COMFORT®, a better way to walk.
- Comfort Rating -40°C to -50°C.



EXCLUSIVELY AT
Mark's



DAKOTA

WORKPRO SERIES

STYLE: 5ANFDKW6-8524

SIZES: 7-15 Full Sizes Only

CSA GRADE 1 COMPOSITE TOE, COMPOSITE PLATE. ESR.

Our Dakota oil and diesel resistant work boots are designed to protect your feet and legs on an industrial work site. ICEFX® on Ice technology will help keep you safe on slick and frozen surfaces. Frost plugs keep your feet dry, while T-MAX® technology offers lightweight warmth. Safety features include CSA Grade 1 Comp toes and plates and electric shock resistance. Yellow reflective bands make you visible in poor lighting situations.

"8524" CTCP Syntrol Felt Pack Winter Boot

- Oil, Diesel & chemical resistant Syntrol upper .
- Oil Resistant polyurethane shell.
- Superior removable liner system with 400g T-MAX® insulation.
- QUAD COMFORT®, a better way to walk.
- 6mm Frost Plug helps keep feet dry and warm.
- Oil resistant midsole.
- Oil & Diesel resistant ICEFX® outsole.
- Comfort Rating -50°C to -60°C.

LINER AVAILABLE 5ANF-LNR-8524



EXCLUSIVELY AT
Mark's



STYLE: HHF221101
SIZES: 7-14 Full Sizes Only
 CSA GRADE 1 COMPOSITE TOE, COMPOSITE PLATE. ESR.

CTCP Polyurethane Winter Boot

- Split leather upper with polyurethane shell.
- **HELLYTECH® WATERPROOF** Performance waterproof membrane.
- Breathable lining with **FRESHTECH®**.
- 400g **T-MAX®** Insulation.
- Removable polyurethane footbed.
- **HELLYGRIP™** rubber outsole.

EXCLUSIVELY AT
Mark's



STYLE: HHF231102
SIZES: 7-14 Full Sizes Only
 CSA GRADE 1 COMPOSITE TOE, COMPOSITE PLATE. ESR.

Waterproof and breathable, these Helly Hansen work boots will keep your feet dry in wet weather. They'll also keep them warm when it's cold outside, thanks to T-MAX® INSULATION technology that offers superior warmth and maximum comfort. These men's metal free boots meet CSA Grade 1 requirements for toe and underfoot protection. They're also electric shock resistant. Bottomed out with IceFX® rubber outsoles, these boots will help you walk safely in slippery conditions.

CTCP Safety Winter Winter Boot

- Nylon Ripstop upper .
 - **HELLYTECH® WATERPROOF** Performance waterproof membrane.
 - Helcore Groove leather toe cap and heel counter.
 - Removable EVA footbed with **T-MAX® HEAT** lining.
 - Removable Aero Foam liner with **T-MAX®**.
 - **ICEFX®** rubber outsole with **GREEN DIAMOND®** technology.
- LINER AVAILABLE HHF23-LNR-1102**

EXCLUSIVELY AT
Mark's



STYLE: HHF231103
SIZES: 7-15 Full Sizes Only
 CSA GRADE 1 COMPOSITE TOE, COMPOSITE PLATE. ESR.

CTCP Winter Felt Pack Boot

- Oil resistant fabric upper.
- Polyurethane full shell with reflective material on toe and heel.
- Removable EVA footbed with T-MAX® HEAT lining.
- Superior removable liner with 400g T-MAX® insulation.
- Removable EVA frost plug.
- ICEFX® rubber outsole with GREEN DIAMOND® technology.

LINER AVAILABLE HHF23-LNR-1103

EXCLUSIVELY AT
Mark's



STYLE: 915605
SIZES: 7-14 Full Sizes Only
 CSA GRADE 1 COMPOSITE TOE, COMPOSITE PLATE. ESR.

"Crossbow" CTCP Transitional Winter Boot

- Full grain waterproof sealed-seam leather upper.
- Direct-injected cold formulated polyurethane shell bottom.
- CLEANFEET® odour-control treatment.
- Removable TERRASPHERE™ 4 layer liner system.
- High-traction thermal-tested rubber outsole with diamond cleat design.
- METAL FREE.



STYLE: TB0A5QXJ001
SIZES: 4-16 Full Sizes Only
 CSA GRADE 1 COMPOSITE TOE, COMPOSITE PLATE. ESR.

"Pac Max" CTCP 10" Winter Boot

- Ever-Guard™ waterproof leather upper.
- Waterproof breathable membrane.
- Polyurethane shell and midsole.
- Removable frost plug.
- All weather TPU outsole.
- Heavy weight liner with comfort rating to -60° C.
- Multiple handles for easy entry/exit.

MIDWEIGHT LINER AVAILABLE TB0A5TTB484

HEAVY LINER AVAILABLE TB0A5MR2827

GET THE TRACTION YOU NEED THIS WINTER

WINTER  WALKING

TRANSITIONAL TRACTION® ICE CLEATS

TRANSITIONAL TRACTION® ice cleats are designed for the employees who are often the most difficult to provide traction for; those who frequently transition from outdoors to indoor settings and/or drive vehicles.

The key to TRANSITIONAL TRACTION® devices is that they can be left on all day without the need to be removed each time you walk indoors.



LOW-PRO® Ice Cleat

A compact, light weight industrial strength ice and snow walking device that fits over all types of shoes and boots. Extremely easy to use and light in weight, they are virtually inconspicuous on the user's foot.

Low-Profile Studs for Versatile Traction

- 26 permanent tungsten carbide studs for max durability.
- Safer to wear indoors and while driving.
- Dual rear pull-tab for easy on/off.

SIZES: 5-13.5+ (Men's),
7-11.5+ (Women's)

STYLE: JD6610



ICE BEAST® Low-Pro

Features 28 permanent low-profile tungsten carbide studs for transitional traction in outdoor and indoor settings.

Low-Profile Studs for Versatile Traction

- 28 durable tungsten carbide studs.
- Complete access to defined heel for safe climbing.
- Dual pull tabs for easy on/off.
- Wing-tip connection points keep steel chains off walking surface.
- Safer to wear indoors and while driving.
- Extremely pliable upper ring for easy on/off.

SIZES: 5-14+ (Men's),
7-12+ (Women's)

STYLE: JD7710



WOMEN'S
8 INCH
FOOTWEAR





AGGRESSOR

STYLE: 5BOAAG6-8500

SIZES: 5-11 (incl. half)

CSA GRADE 1 STEEL TOE, STEEL PLATE. ESR.

Women's 8" STSP Work Boot

- Buffalo Nubuck leather upper.
- Breathable air mesh lining.
- Removable EVA footbed.
- Polyurethane toe guard.

EXCLUSIVELY AT

Mark's



DAKOTA

WORKPRO SERIES

STYLE: 5BOADK4-8006

SIZES: 5,6-11

CSA GRADE 1 STEEL TOE, COMPOSITE PLATE. ESR.

The Quad Comfort® women's safety boots from Dakota have Nubuck leather uppers reinforced with triple stitching and two-colour Tarantula Anti-Slip® rubber outsoles for safe traction. Insulated for outdoor work, the T-MAX® Insulation fibres improve heat retention and help to regulate body temperature. Your feet will thank you for the anti-microbial treatment that fights odours and stains and the supportive cushioning that absorbs shock. Four-density insoles are removable in favour of custom orthotics and PU midsoles provide extra support for when you spend long shifts on your feet.

Women's Quad Comfort 8" "8006" STSP Work Boot

- Nubuck leather upper.
- Breathable & moisture wicking Cambrelle lining with 200g T-MAX® insulation.
- QUAD COMFORT®, a better way to walk.
- Removable 4 density EVA Ortholite® footbed.
- Direct injected PU midsole.
- TARANTULA ANTISLIP® rubber outsole, engineered to help prevent slips and falls.

EXCLUSIVELY AT

Mark's



DAKOTA

WORKPRO SERIES

STYLE: 5BOADKO-8030

SIZES: 5,6-11

CSA GRADE 1 STEEL TOE, STEEL PLATE. ESR.

Women's 8" "8030" STSP Work Boot

- Full grain leather upper
- DRI-TEC with FRESHTECH® treated lining.
- 200g T-MAX® Insulation.
- QUAD COMFORT®, a better way to walk.
- EVA midsole.
- Removable polyurethane footbed.
- TARANTULA ANTISLIP® rubber outsole, engineered to help prevent slips and falls.

EXCLUSIVELY AT

Mark's



DAKOTA

WORKPRO SERIES

STYLE: 5BOADK9-8016

SIZES: 6-10,11

CSA GRADE 1 STEEL TOE, STEEL PLATE. ESR.

8" STSP Quad Comfort® Lite Work Boot

- Suede leather upper.
- DRI-TEC with FRESHTECH® treated lining.
- QUAD COMFORT®, a better way to walk.
- Compression molded EVA midsole.
- TARANTULA® ANTI-SLIP rubber outsole, engineered to help prevent slips and falls.

EXCLUSIVELY AT

Mark's



DAKOTA

WORKPRO SERIES

STYLE: 5BOADK5-8112

SIZES: 6-10,11

CSA GRADE 1 STEEL TOE, STEEL PLATE. ESR.

Women's 8" STCP Internal Metguard Boot

- Full grain leather upper with side zipper
- Breathable & moisture wicking mesh lining.
- 200g TMAX® Insulation.
- QUAD COMFORT®, a better way to walk.
- Removable 4 density footbed.
- TARANTULA® ANTI-SLIP rubber outsole, engineered to help prevent slips and falls.
- Internal metatarsal protection.

EXCLUSIVELY AT

Mark's



STYLE: HHS202181W

SIZES: 6-11

CSA GRADE 1 STEEL TOE, COMPOSITE PLATE. ESR.

Women's 8" "Bergen" STCP Work Boot

- Waterproof leather upper.
- HELLYTECH® WATERPROOF Waterproof membrane.
- DRI-TEC with FRESHTECH® treated lining.
- 200g T-MAX® insulation.
- Removable EVA footbed
- HELLYGRIP™ Rubber Outsole.

EXCLUSIVELY AT

Mark's



STYLE: P311182

SIZES: 5-10,11

CSA GRADE 1 STEEL TOE, STEEL PLATE. ESR.

Women's 8" "Clover" STSP Work Boot

- Full grain leather upper with knit collar
- Nylon lining.
- EASE footbed.
- Molded EVA midsole.
- Rubber outsole.



STYLE: TB0A1KQS001

SIZES: 5.5-10,11

CSA GRADE 1 COMPOSITE TOE, COMPOSITE PLATE. ESR.

Women's 8" "Endurance HD" CTCP Waterproof Work Boot

- Premium waterproof leather upper.
- Waterproof breathable membrane.
- Re-BOTL breathable, antimicrobial and moisture wicking lining.
- 200g Thermolite® Insulation.
- Removable anti-fatigue footbed.
- Polyurethane midsole.
- Timberland PRO® Oil, slip, abrasion resistant non-marking flexible rubber outsole.
- Internal metatarsal protection.



STYLE: TB0A5V1U214

SIZES: 5.5-10,11

CSA GRADE 1 COMPOSITE TOE, COMPOSITE PLATE. ESR.

Women's 8" "Boondock" CTCP Waterproof Work Boot

- Premium waterproof leather upper.
- Waterproof breathable membrane.
- Re-BOTL breathable, antimicrobial and moisture wicking lining.
- Removable anti-fatigue footbed.
- Polyurethane midsole.
- **VIBRAM®** FIRE & ICE outsole.
- **VIBRAM®** molded rubber toe.

EXCLUSIVELY AT
Mark's



STYLE: TB1A5V1U214

SIZES: 5.5-10,11

CSA GRADE 1 COMPOSITE TOE, COMPOSITE PLATE. ESR.

Women's 8" "Boondock" CTCP Waterproof Work Boot

- Premium waterproof leather upper.
- Waterproof breathable membrane.
- Re-BOTL breathable, antimicrobial and moisture wicking lining.
- Removable anti-fatigue footbed.
- Polyurethane midsole.
- **VIBRAM®** FIRE & ICE outsole.
- **VIBRAM®** molded rubber toe.



STYLE: TROA4NRDBLK-01

SIZES: 5-10,11

CSA GRADE 1 COMPOSITE TOE, COMPOSITE PLATE. ESR.

Women's 8" "Brenn" CTCP Metguard Work Boot

- Full grain waterproof leather upper.
- Internal metatarsal protection.
- Moisture wicking, abrasion resistant lining with 200g Thinsulate™ insulation.
- Removable polyurethane footbed.
- Polyurethane midsole.
- TPU outsole.



WOMEN'S
6 INCH
FOOTWEAR





AGGRESSOR

STYLE: 5BOBAG4-6500

SIZES: 5.6-11

CSA GRADE 1 STEEL TOE, STEEL PLATE. ESR.

Women's 6" STSP Work Boot

- Buffalo Nubuck leather upper.
- Breathable Air Mesh lining.
- Removable EVA footbed.
- Polyurethane toe guard.

EXCLUSIVELY AT

Mark's



DAKOTA

WORKPRO SERIES

STYLE: 5BOBDK2-6030

SIZES: 6-10,11

CSA GRADE 1 STEEL TOE, STEEL PLATE. ESR.

6" "6030" STSP Work Boot

- Full grain leather upper.
- DRI-TEC with FRESHTECH® treated lining.
- 200g T-MAX® insulation.
- QUAD COMFORT®, a better way to walk.
- EVA midsole.
- Removable polyurethane Footbed
- TARANTULA® ANTI-SLIP rubber outsole, engineered to help prevent slips and falls.

EXCLUSIVELY AT

Mark's



DAKOTA

WORKPRO SERIES

STYLE: 5BOBDK6-6006

SIZES: 5,6-11

CSA GRADE 1 STEEL TOE, COMPOSITE PLATE. ESR.

Women's Quad Comfort® 6" STCP Work Boot

- Nubuck leather upper.
- Breathable & moisture wicking Cambrelle lining with 200g T-MAX® insulation.
- QUAD COMFORT®, a better way to walk.
- Removable 4 density EVA Ortholite® footbed.
- Direct injected PU midsole.
- TARANTULA® ANTI-SLIP rubber outsole, engineered to help prevent slips and falls.

EXCLUSIVELY AT

Mark's



DAKOTA

WORKPRO SERIES

STYLE: 5BOBDK5-6016

SIZES: 6-10,11

CSA GRADE 1 STEEL TOE, COMPOSITE PLATE. ESR.

Women's Quad Comfort® 6" STCP Work Boot

- Suede leather upper.
- DRI-TEC with FRESHTECH® treated lining.
- QUAD COMFORT®, a better way to walk.
- Compression molded EVA midsole.
- TARANTULA® ANTI-SLIP rubber outsole, engineered to help prevent slips and falls.

EXCLUSIVELY AT
Mark's



DAKOTA

WORKPRO SERIES

STYLE: 5BOBDK4-6000

SIZES: 5,6-11

CSA GRADE 1 ALUMINUM TOE, COMPOSITE PLATE. ESR.

6" ATCP Pull On Work Boot

- Full grain leather upper.
- Elastic gussets.
- Breathable lining.
- QUAD COMFORT®, a better way to walk.
- Removable EVA footbed.
- TARANTULA® ANTI-SLIP rubber outsole, engineered to help prevent slips and falls.

EXCLUSIVELY AT
Mark's



H/H
workwear

STYLE: HHS202160W

SIZES: 6-11

CSA GRADE 1 STEEL TOE, COMPOSITE PLATE. ESR.

Women's 6" "Bergen" STCP Waterproof Boot

- Waterproof leather upper.
- HELLYTECH® WATERPROOF. Waterproof Membrane
- DRI-TEC with FRESHTECH® treated lining.
- 200g T-MAX® insulation.
- Removable EVA footbed.
- HELLYGRIP™ Rubber Outsole.

EXCLUSIVELY AT
Mark's



STYLE: HHF191061W

SIZES: 6-11

CSA GRADE 1 ALUMINUM TOE, COMPOSITE PLATE. ESR.

6" ATCP High Abrasion Work Boot

- Lenzi abrasion resistant woven upper.
- DRI-TEC with FRESHTECH® treated lining.
- 200g T-MAX® insulation.
- Removable EVA footbed.
- HELLYGRIP™ Rubber Outsole.



EXCLUSIVELY AT
Mark's



STYLE: P310912

SIZES: 5-10

CSA GRADE 1 STEEL TOE, COMPOSITE PLATE. ESR.

Women's "Abbey" STCP Pull-On Boot

- Nubuck leather upper.
- Nylon mesh lining for added breathability and comfort.
- Removable molded EVA footbed.
- Lightweight EVA midsole.
- Oil, slip, abrasion resistant rubber outsole.
- Molded heel counter.



KODIAK®

STYLE: KD0A4TDFBLK

SIZES: 5-10,11

CSA GRADE 1 COMPOSITE TOE, COMPOSITE PLATE. ESR.

Women's 6" "Bralorne" Chelsea CTCP Work Boot

- Removable Comfortzone™ OrthoLite® footbed.
- Abrasion-resistant lining wicks away moisture.
- Kodiak® SOS Smell Out Science® odour control.
- Full grain leather upper.
- Oil & slip resistant, non-marking rubber outsole.





STYLE: TB0A1KJU214

SIZES: 5.5-10,11

CSA GRADE 1 ALUMINUM TOE, COMPOSITE PLATE. ESR.

Women's "Hightower" ATCP Work Boot

- Premium leather upper.
- Re-BOTL breathable, antimicrobial and moisture wicking lining.
- Removable anti-fatigue footbed.
- Polyurethane midsole.
- Timberland PRO® all-weather, Oil, Heat and Slip resistant TPU outsole.



STYLE: TB0A612F214

SIZES: 5.5-10,11

CSA GRADE 1 COMPOSITE TOE, COMPOSITE PLATE. ESR..

6" "Nashoba" CTCP Pull On Work Boot

- Premium full grain leather upper.
- Re-BOTL breathable, antimicrobial and moisture wicking lining.
- Removable anti-fatigue PU footbed.
- Timberland PRO® rubber outsole.



STYLE: TB0A2KAJ231

SIZES: 5.5-10,11

CSA GRADE 1 ALLOY TOE, COMPOSITE PLATE. ESR..

"ICON" ATSP Waterproof Work Boot

- Premium leather upper.
- Waterproof, breathable membrane.
- Re-BOTL breathable, antimicrobial and moisture wicking lining.
- Removable anti-fatigue footbed.
- Polyurethane midsole.
- Timberland PRO® oil, slip and abrasion-resistant non-marking flexible, rubber outsole.





STYLE: TB0A5V2F001

SIZES: 5.5-10,11

CSA GRADE 1 COMPOSITE TOE, COMPOSITE PLATE. ESR..

6" "Boondock" CTCP Waterproof Work Boot

- Premium waterproof leather upper.
- Waterproof breathable membrane.
- Re-BOTL breathable, antimicrobial and moisture wicking lining.
- Removable anti-fatigue footbed.
- Polyurethane midsole.
- **VIBRAM®** FIRE & ICE outsole.
- **VIBRAM®** molded rubber toe.

EXCLUSIVELY AT
Mark's



STYLE: TB1A5V2F001

SIZES: 5.5-10,11

CSA GRADE 1 COMPOSITE TOE, COMPOSITE PLATE. ESR..

6" "Boondock" CTCP Waterproof Boot

- Premium full grain leather upper.
- Waterproof, breathable membrane.
- Re-BOTL breathable, antimicrobial and moisture wicking lining.
- Removable anti-fatigue footbed.
- Polyurethane midsole.
- All-Weather TPU slip & oil resistant outsole is heat-resistant up to 120° C.



STYLE: 1022104

SIZES: 5-10,11

CSA GRADE 1 ALUMINUM TOE, COMPOSITE PLATE. ESR..

Women's "Seattle" 6" ATCP Waterproof Work Boot

- Waterproof leather upper.
- **KEEN.DRY®** waterproof breathable membrane.
- Moisture wicking quilted mesh.
- Removable PU footbed.
- EVA midsole.
- Heat, oil & slip resistant, non-marking rubber outsole.



STYLE: 163-01

SIZES: 6-11.5

CSA GRADE 1 COMPOSITE TOE, COMPOSITE PLATE. ESR..

6" Leather Pull-On CTCP Work Boot

- CSA Grade 1 protective toe cap.
- Weatherproof leather is an industry-leading 2.5 mm thick, yet 'breathes' for absolute comfort.
- Dual-density polyurethane midsole and thermo-polyurethane (TPU) outsole: weatherproof, durable, lightweight and provides reliable certified traction.
- XRD® footbed for all-day comfort and support.
- Puncture resistant mid-soles by Lenzi: lighter, safer, more flexible, more comfortable and warmer than steel.
- Injection molded soles -no adhesives to come unglued, no stitching to rot.
- Heat, slip, oil, acid and electric shock-resistant sole.
- Comfort EVA removable footbed with XRD® in the heel pad.

ONLY AVAILABLE ONLINE AT: markscommercial.com



STYLE: 168-01

SIZES: 7-11.5

CSA GRADE 1 COMPOSITE TOE, COMPOSITE PLATE. ESR..

6" Leather Pull-On CTCP Work Boot

- CSA Grade 1 protective toe cap.
- Weatherproof leather is an industry-leading 2.5 mm thick, yet 'breathes' for absolute comfort.
- Dual-density polyurethane midsole and thermo-polyurethane (TPU) outsole: weatherproof, durable, lightweight and provides reliable certified traction.
- XRD® footbed for all-day comfort and support.
- Puncture resistant mid-soles by Lenzi: lighter, safer, more flexible, more comfortable and warmer than steel.
- Injection molded soles -no adhesives to come unglued, no stitching to rot.
- Heat, slip, oil, acid and electric shock-resistant sole.
- Comfort EVA removable footbed with XRD® in the heel pad.

ONLY AVAILABLE ONLINE AT: markscommercial.com



STYLE: 180-01

SIZES: 6-11.5

CSA GRADE 1 COMPOSITE TOE, COMPOSITE PLATE. ESR..

6" Leather Pull-On CTCP Work Boot

- CSA Grade 1 protective toe cap.
- Weatherproof leather is an industry-leading 2.5 mm thick, yet 'breathes' for absolute comfort.
- Dual-density polyurethane midsole and thermo-polyurethane (TPU) outsole: flexible, lightweight and durable.
- XRD® footbed for all-day comfort and support.
- Injection molded soles -- no adhesives to come unglued, no stitching to rot.
- Heat, slip, oil, acid and electric shock-resistant sole.
- Heat-formed heel for a snug fit.

ONLY AVAILABLE ONLINE AT: markscommercial.com



STYLE: 968-01

SIZES: 6-11.5

CSA GRADE 1 COMPOSITE TOE, COMPOSITE PLATE. ESR.

6" Leather Pull-On CTCP Work Boot

- Slip-resistant rubber outsole. CSA approved grade 1 protective toe cap.
- Highly resistant to hydrolysis and microbial attack.
- Heat resistant to 300 °C.
- Oil, acid and organic fat resistant sole. Molded TPU toe guard.
- Premium weatherproof leather upper and elastic sided boot.
- Luxury removable Comfort Arch footbed with XRD® Technology for greater impact absorption and cushioning support for all-day comfort. Footbed is anti-bacterial, washable and breathable.
- Nylon shank ensures correct step flex point, assists with torsional stability.
- Extreme puncture protection that is metal-free and lightweight.

ONLY AVAILABLE ONLINE AT: markscommercial.com



STYLE: 960-02

SIZES: 6-11.5

CSA GRADE 1 STEEL TOE, STEEL PLATE. ESR.

Blundstone CSA-Approved 960 Work & Safety XFR in Wheat stands on a thicker, solid rubber lug sole for safe, long-wearing, comfort and stability. This unisex Blundstone Work and Safety boot has Comfort Arch footbeds reduce stress on bones and joints, cushioning heel-strike impact by up to 90%. Tough-as-nails rubber toe caps protect the boot itself and extend service life. Step up to comfort and safety that won't let you down.

6" Leather Pull-On CTCP Work Boot

- Rubber outsole provides slip-resistance through a combination of design, tread pattern and sole material.
- Highly resistant to hydrolysis and microbial attack.
- Heat resistant to 300 °C.
- Oil, acid and organic fat resistant sole.
- Premium weatherproof leather upper and elastic sided boot.
- Molded TPU toe guard for added protection.
- Luxury removable Comfort Arch footbed with XRD® Technology for greater impact absorption and cushioning support for all-day comfort.
- Footbed is anti-bacterial, washable and breathable.
- Nylon shank ensures correct step flex point, assists with torsional stability.
- Extreme puncture protection that is metal-free, lightweight and flexible offering optimum penetration resistance
- Electrical shock resistant sole.
- CSA approved grade 1 protective toe cap.

ONLY AVAILABLE ONLINE AT: markscommercial.com

WOMEN'S
HIKER
FOOTWEAR





AGGRESSOR

STYLE: 5BOCAG9-2501

SIZES: 6-11.5

CSA GRADE 1 STEEL TOE, STEEL PLATE. ESR..

Women's STSP Low-Cut Safety Hiker

- Textile & polyurethane upper.
- DRI-TEC with FRESHTECH® treated lining.
- Removable EVA footbed.
- EVA midsole.

EXCLUSIVELY AT
Mark's



AGGRESSOR

STYLE: 5BOCAG9-2502

SIZES: 5-11

CSA GRADE 1 STEEL TOE, STEEL PLATE. ESR..

Women's STSP Mid-Cut Safety Hiker

- Textile & polyurethane upper.
- DRI-TEC with FRESHTECH® treated lining.
- Removable EVA footbed.
- EVA midsole.

EXCLUSIVELY AT
Mark's



DAKOTA WORKPRO SERIES

STYLE: 5BOCDK0-2007

SIZES: 6-10

CSA GRADE 1 ALUMINUM TOE, COMPOSITE PLATE. ESR..

Women's ATCP Mid-Cut Safety Hiker

- Synthetic & breathable mesh upper.
- Breathable mesh lining.
- QUAD COMFORT®, a better way to walk.
- EVA Midsole.
- Removable footbed.
- TARANTULA® ANTI-SLIP rubber outsole, engineered to help prevent slips and falls.

EXCLUSIVELY AT
Mark's



DAKOTA

WORKPRO SERIES

STYLE: 5BOCDK0-2003

SIZES: 5-11

CSA GRADE 1 ALUMINUM TOE, COMPOSITE PLATE. ESR..

Women's ATCP Low-Cut Safety Hiker

- Synthetic & breathable mesh upper.
- Breathable mesh lining.
- **QUAD COMFORT®**, a better way to walk.
- EVA Midsole.
- Removable footbed.
- **TARANTULA® ANTI-SLIP** rubber outsole, engineered to help prevent slips and falls.

EXCLUSIVELY AT
Mark's

DAKOTA

WORKPRO SERIES

STYLE: 5BOCDK8-2120

SIZES: 5,6-11

CSA GRADE 1 STEEL TOE, COMPOSITE PLATE. ESR.

Offering steel toes and composite plates, these genuine suede safety boots are waterproof and breathable for all-weather comfort. They also feature breathable mesh linings along with our FRESHTECH® Odour protection technology for all day freshness. The Dakota 2120 women's work boots have Tarantula Anti-Slip™ rubber outsoles that are designed to help prevent slips and falls.

Women's "2120" STCP Waterproof Safety Hiker

- Waterproof leather upper.
- **HYPER-DRI® HD3** waterproof, breathable membrane
- Breathable, moisture wicking **DRI-TEC** lining.
- **QUAD COMFORT®**, a better way to walk.
- Cushioning PU Midsole.
- Removable EVA Footbed.
- **TARANTULA® ANTI-SLIP** rubber outsole, engineered to help prevent slips and falls.

EXCLUSIVELY AT
Mark's



STYLE: HHS231009W

SIZES: 6-11

CSA GRADE 1 ALUMINUM TOE, COMPOSITE PLATE. ESR..

Women's ATCP Low-Cut Safety Hiker

- Durable polyester mesh upper.
- Protective toe cover.
- Breathable mesh lining.
- Removable **Ortholite®** footbed.
- EVA midsole.
- **HELLYGRIP™** rubber outsole.



EXCLUSIVELY AT
Mark's



STYLE: HHS231010W

SIZES: 6-11

CSA GRADE 1 ALUMINUM TOE, COMPOSITE PLATE. ESR..

A mid-cut safety hiker from Helly Hansen, this design features aluminum toes and composite plates that meet CSA Grade 1 standards. They are resistant to electric shock and puncture. Tough uppers are made of abrasion-resistant mesh with welded TPU overlays and rubber toe bumpers. Comfort features include padding around the collar and tongue and removable Ortholite® insoles. These hikers have cushioned EVA midsoles and rubber outsoles.

Women's ATCP Mid-Cut Safety Hiker

- Durable polyester mesh upper.
- Protective toe cover.
- Breathable mesh lining.
- Removable **Ortholite®** footbed.
- EVA midsole.
- **HELLYGRIP™** rubber outsole.



EXCLUSIVELY AT
Mark's



KODIAK®

STYLE: 305003DW

SIZES: 6-10

CSA GRADE 1 COMPOSITE TOE, COMPOSITE PLATE. ESR..

Women's "Journey" CTCP Waterproof Hiker

- Full grain waterproof leather upper.
- Waterproof breathable membrane.
- Breathable mesh lining.
- 200g **Thinsulate™** insulation.
- Oil & slip resistant, non-marking rubber outsole.
- Removable, shock-absorbing polyurethane Footbed.
- EVA Midsole.
- **ROCKFIBRE®** Metal free technology.



STYLE: J006128

SIZES: 5-11

CSA GRADE 1 COMPOSITE TOE, COMPOSITE PLATE. ESR..

Women's "Antora" CTCP Waterproof Hiker

- Breathable mesh and TPU Upper.
- Waterproof breathable membrane.
- Breathable mesh lining.
- **Merrell M Select™ GRIP** oil & slip resistant rubber outsole.
- Removable **COMFORTBASE™** contoured footbed.
- **COMFORTBASE™** rubberized EVA midsole for increased shock absorption and cushion.



STYLE: J006146

SIZES: 5-10,11

CSA GRADE 1 COMPOSITE TOE, COMPOSITE PLATE. ESR..

"Moab Vertex 2" CTCP Waterproof Mid-Safety Hiker

- Waterproof pig suede leather upper.
- Faux fur lining.
- Removable PU footbed with faux fur cover.
- EVA midsole.
- Rubber outsole.





WOMEN'S
CASUAL
INDUSTRIAL FOOTWEAR



AGGRESSOR

STYLE: 5BODAG9-1501

SIZES: 5-11

CSA GRADE 1 STEEL TOE, STEEL PLATE. ESR..

Women's STSP Athletic Safety Shoe

- Textile upper.
- DRI-TEC with FRESHTECH® treated lining.
- Removable EVA footbed.
- EVA midsole.

EXCLUSIVELY AT
Mark's



DAKOTA

WORKPRO SERIES

STYLE: 5BODDK8-1007

SIZES: 5-11

CSA GRADE 1 STEEL TOE, STEEL PLATE. ESR..

Women's Lightweight Canvas STSP Safety Shoe

- Canvas upper
- Breathable mesh lining with FRESHTECH®.
- EVA midsole.
- Removable comfort footbed.
- Rubber outsole.

EXCLUSIVELY AT
Mark's



DAKOTA

WORKPRO SERIES

STYLE: 5BODDK9-1008

SIZES: 5-11

CSA GRADE 1 STEEL TOE, STEEL PLATE. ESR..

Women's Lightweight Canvas STSP Slip-On Shoe

- Canvas upper
- Breathable mesh lining with FRESHTECH®.
- EVA midsole.
- Removable comfort footbed.
- Rubber outsole.

EXCLUSIVELY AT
Mark's



DAKOTA

WORKPRO SERIES

STYLE: 5BODDK9-1009

SIZES: 5-11

CSA GRADE 1 STEEL TOE, STEEL PLATE. ESR..

Women's Lightweight STSP Canvas Lace-Up Shoe

- Canvas upper
- Breathable mesh lining with **FRESHTECH®**.
- EVA midsole.
- Removable comfort footbed.
- Rubber outsole.

EXCLUSIVELY AT

Mark's

DAKOTA

WORKPRO SERIES

STYLE: 5BOCDK7-3602

SIZES: 6-10,11

CSA GRADE 1 ALUMINUM TOE, STEEL PLATE. ESR.

Our Dakota athletic-style safety shoes are made of microfiber and mesh with nylon linings for breathability. They are equipped with our Quad Comfort® Lite technology that offers all the comfort of our regular version with less weight. These women's safety shoes have aluminum toes and steel plates, and they are electric shock resistant. Insoles are removable in favour of your own orthotics and Tarantula Anti-Slip™ outsoles help to prevent slips and falls.

Women's ATSP Quad Comfort® Lite Athletic Shoe

- Mesh upper with welded TPU.
- Breathable mesh lining with **FRESHTECH®**.
- **QUAD COMFORT®**, a better way to walk.
- Injected EVA midsole.
- Removable EVA Footbed.
- **TARANTULA® ANTI-SLIP** rubber outsole, engineered to help prevent slips and falls.



EXCLUSIVELY AT

Mark's



STYLE: HHS201006W
SIZES: 6-10
 CSA GRADE 1 ALUMINUM TOE, STEEL PLATE. ESR..

Women's ATSP Athletic Safety Shoe

- Lightweight breathable mesh and polyurethane upper.
- Reinforced PU welded toe and heel for additional protection.
- Removable moisture wicking Ortholite® footbed.
- HELLYGRIP™ Rubber Outsole.

EXCLUSIVELY AT
Mark's



STYLE: P310493
SIZES: 5-10
 CSA GRADE 1 STEEL TOE, STEEL PLATE. ESR..

Women's "Woodward" STSP Athletic Shoe

- Leather upper with nylon mesh inserts.
- Nylon mesh lining for added breathability and comfort.
- Oil, slip, abrasion resistant rubber outsole.
- Removable ease footbed.
- Molded EVA midsole.



STYLE: P725770
SIZES: 5-10,11
 CSA GRADE 1 COMPOSITE TOE, COMPOSITE PLATE. ESR..

Women's "Streamline" CTCP Athletic Shoe

- Nylon mesh, polyurethane coated suede.
- Breathable nylon mesh lining.
- ReVive footbed is built with engineered comfort for a contoured fit and support underfoot.
- Slip-resistant, industrial grade rubber outsole.
- Metal free.





STYLE: TB0A632U001
SIZES: 5.5-10,11
 CSA GRADE 1 STEEL TOE, STEEL PLATE. ESR.

“Intercept” STSP Athletic Safety Shoe

- Mesh upper with abrasion resistant reinforcements.
- Re-BOTL breathable, antimicrobial and moisture wicking lining.
- EVA midsole.
- Timberland PRO® Flex Technology sole with positioned flex grooves.



STYLE: TB0A66T7ECS
SIZES: 5.5-10,11
 CSA GRADE 1 COMPOSITE TOE, COMPOSITE PLATE. ESR.

“Powertrain EV” CTCP Safety Shoe

- Durable, breathable ripstop nylon and Raptex upper.
- Breathable and moisture-wicking lining with antimicrobial treatment for odour control.
- Timberland PRO® rubber outsole.
- Metal and mutilation free.



STYLE: TB0A2A63001
SIZES: 5-10,11
 CSA GRADE 1 COMPOSITE TOE, COMPOSITE PLATE. SD.

Women's “Radius” SD+ CTCP Athletic Safety Shoe

- Durable, breathable mesh upper with abrasion resistant reinforcements.
- Re-BOTL breathable, antimicrobial and moisture wicking lining.
- Static Dissipative.
- Timberland PRO® Oil, slip, abrasion resistant non-marking flexible rubber outsole.
- Removable anti-fatigue technology footbed.
- Hoverspring midsole.





KODIAK®

STYLE: 308004BLK

SIZES: 5,6-10

CSA GRADE 1 STEEL TOE, COMPOSITE PLATE. ESR.

Women's "Taja" STCP Lace-Up Safety Shoe

- Stretchable PU coated leather upper.
- Stretch nylon comfort lining with reinforced microfiber heel counter lining.
- Removable, breathable Ortholite® footbed.
- Lightweight EVA flexible midsole.
- KODIAK® ultimate slip & oil resistant rubber outsole.



KODIAK®

STYLE: 308005BLK

SIZES: 5,6-10

CSA GRADE 1 STEEL TOE, COMPOSITE PLATE. ESR.

Women's "Britt" STCP Slip-On Safety Shoe

- Stretchable PU coated leather upper.
- Stretch nylon comfort lining with reinforced microfiber heel counter lining.
- Removable, breathable Ortholite® footbed.
- Lightweight EVA flexible midsole.
- KODIAK® ultimate slip & oil resistant rubber outsole.



KEEN

STYLE: 1025244

SIZES: 5-10,11

CSA GRADE 1 COMPOSITE TOE, COMPOSITE PLATE. ESR.

Women's "Vista Energy" CTCP Athletic Safety Shoe

- Mesh & synthetic upper.
- Breathable mesh lining.
- Removable PU footbed.
- KEEN.ReGen® multi-density midsole.
- Heat, oil & slip resistant, non-marking rubber outsole
- Metal Free.





Reebok

STYLE: IBO46

SIZES: 6-10,11

CSA GRADE 1 COMPOSITE TOE, COMPOSITE PLATE. ESR.

Women's "Sublite Cushion" CTCP Athletic Safety Shoe

- Microfibre & mesh upper.
- Moisture wicking nylon mesh lining.
- Removable MemoryTech footbed.
- EVA midsole.
- Slip resistant rubber outsole.
- Metal free.

Reebok

STYLE: IB314

SIZES: 6-10,11,12

CSA GRADE 1 COMPOSITE TOE, COMPOSITE PLATE. ESR.

With a Floatride Energy foam midsole, the Reebok Fusion Flexweave™ Work Shoes provide cushioning with a kick. Floatride Energy foam is supportive, highly responsive and lighter than traditional EVA. The Flexweave™ fabric delivers flexible support, lightweight durability and breathable strength, allowing you to put more muscle into every task. The slip-resistant rubber outsoles provide adaptive, multi-dimensional flexibility.

Women's "Fusion Flexweave" CTCP Athletic Safety Shoe

- Ultraknit and **Flexweave™** upper.
- Moisture wicking nylon mesh lining.
- Removable EVA footbed.
- Floatride Energy foam lightweight midsole.
- Slip resistant rubber outsole.
- Metal free.





Reebok

STYLE: IB492

SIZES: 6-10,11,12

CSA GRADE 1 COMPOSITE TOE, COMPOSITE PLATE. SD.

Women's "Sublite Cushion" CTCP Athletic Safety Shoe

- Ultraknit and Flexweave™ upper.
- Moisture wicking nylon mesh lining.
- Removable EVA footbed.
- Floatride Energy foam lightweight midsole.
- Slip resistant rubber outsole.
- Metal free.

**SKECHERS
WORK**

STYLE: 99993551

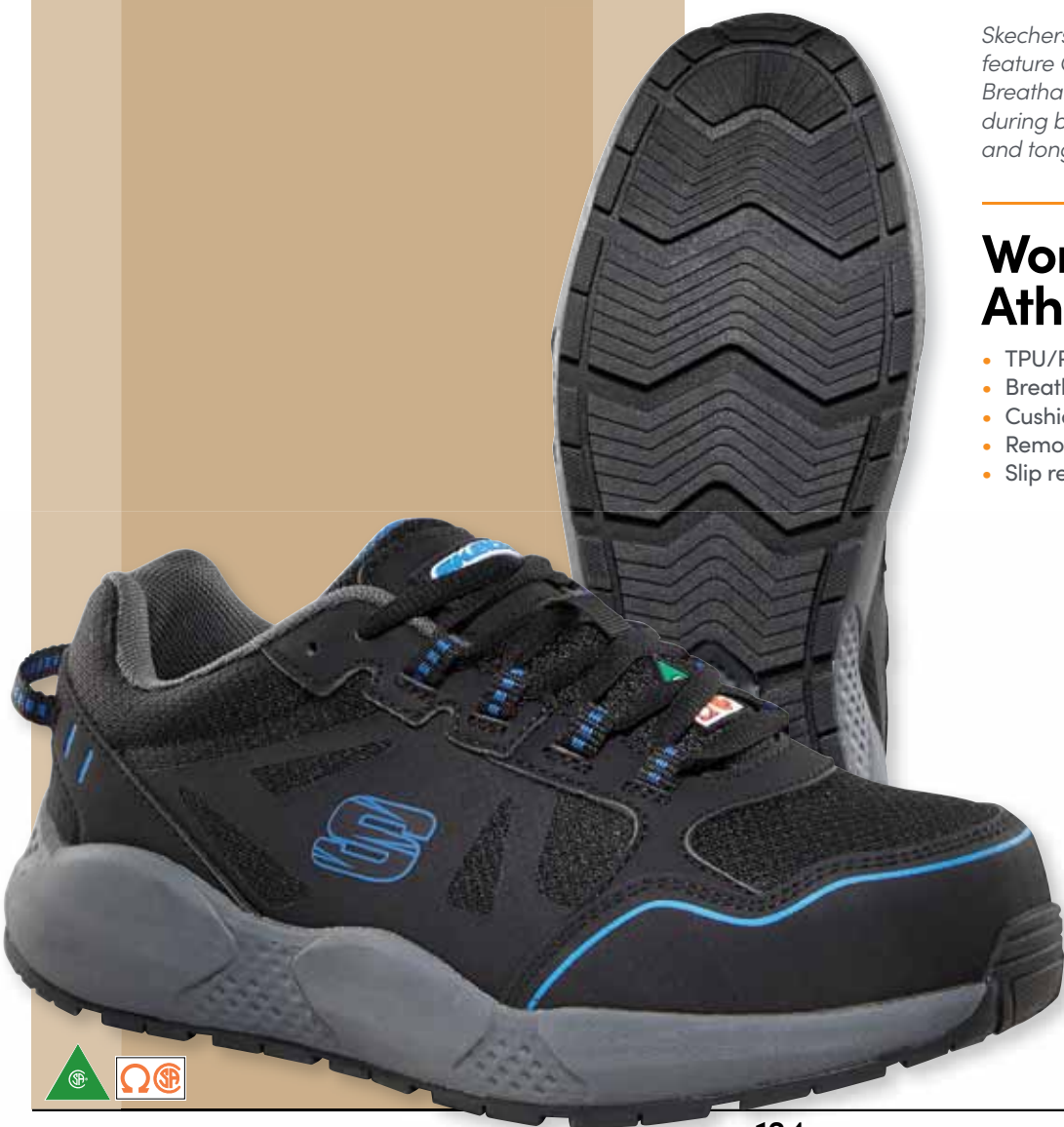
SIZES: 5-11

CSA GRADE 1 STEEL TOE, STEEL PLATE. ESR.

Skechers sporty-style women's safety shoes feature CSA Grade 1 compliant steel toes and plates. Breathable mesh uppers keep your feet cool during busy shifts and padding around the collar and tongue keeps them comfortable.

Women's STSP Athletic Safety Shoe

- TPU/PU and mesh upper.
- Breathable mesh lining with FRESHTECH®.
- Cushioning EVA midsole.
- Removable Air-Cooled memory foam footbed.
- Slip resistant rubber outsole.



EXCLUSIVELY AT
Mark's



SKECHERS
WORK

STYLE: 99997000
SIZES: 5-11
CSA GRADE 1 STEEL TOE, STEEL PLATE. ESR.

STSP Athletic Safety Shoe

- Breathable Jacquard no sew upper.
- Breathable mesh lining.
- Cushioning EVA Midsole.
- Removable EVA footbed.
- Slip resistant rubber outsole.



EXCLUSIVELY AT
Mark's



SKECHERS
WORK

STYLE: 99997001
SIZES: 5-11
CSA GRADE 1 STEEL TOE, STEEL PLATE. ESR.

STSP Athletic Safety Shoe

- Breathable Jacquard no sew upper.
- Breathable mesh lining.
- Cushioning EVA Midsole.
- Removable EVA footbed.
- Slip resistant rubber outsole.



EXCLUSIVELY AT
Mark's



SKECHERS
WORK

STYLE: 99997002
SIZES: 5-11
CSA GRADE 1 STEEL TOE, STEEL PLATE. ESR.

STSP Athletic Safety Shoe

- Breathable Jacquard no sew upper.
- Breathable mesh lining.
- Cushioning EVA Midsole.
- Removable EVA footbed.
- Slip resistant rubber outsole.



EXCLUSIVELY AT
Mark's



STYLE: 5BODWM2-102
SIZES: 5-11 (Full sizes only)
 NON-SAFETY.

Women's Diabetic Non-Safety Shoe

- Waterproof leather upper.
- Non-removable polyurethane footbed.
- Polyurethane midsole with TPU bottom insert.
- Microfiber suede lining with antimicrobial treatment and 2mm polyurethane foam.

NON-SAFETY



STYLE: 5BODWM2-103
SIZES: 5-11 (Full sizes only)
 NON-SAFETY.

Women's Diabetic Non-Safety Shoe

- Waterproof leather upper.
- Non-removable polyurethane footbed.
- Polyurethane midsole with TPU bottom insert.
- Microfiber suede lining with antimicrobial treatment and 2mm polyurethane foam.

NON-SAFETY



STYLE: 5BODWM2-104
SIZES: 5-11 (Full sizes only)
 NON-SAFETY.

Women's Diabetic Non-Safety Shoe

- Waterproof leather upper.
- Non-removable polyurethane footbed.
- Polyurethane midsole with TPU bottom insert.
- Microfiber suede lining with antimicrobial treatment and 2mm polyurethane foam.

NON-SAFETY

WOMEN'S
ANTI-SLIP
FOOTWEAR





AGGRESSOR

STYLE: 5BODAG2-3400

SIZES: 5-11

NON-SAFETY.

Women's Non-Safety Anti-Slip, Lace-Up Skate Shoe

- Synthetic upper.
- DRI-TEC lining with FRESHTECH®.
- Removable EVA footbed.
- Slip resistant rubber outsole.

NON-SAFETY

EXCLUSIVELY AT
Mark's



AGGRESSOR

STYLE: 5BODAG2-3401

SIZES: 5-11

NON-SAFETY.

Women's Non-Safety Anti-Slip, Lace-Up Skate Shoe

- Microfiber and polyurethane upper.
- DRI-TEC lining with FRESHTECH®.
- Removable EVA footbed.
- Slip resistant rubber outsole.

NON-SAFETY

EXCLUSIVELY AT
Mark's



DAKOTA WORKPRO SERIES

STYLE: 5BODDK0-3106

SIZES: 5-11

NON-SAFETY.

Women's Non-Safety Anti-Slip, Lace-Up Shoe

- Microfiber and polyurethane upper.
- Breathable mesh lining with FRESHTECH®.
- QUAD COMFORT®, a better way to walk.
- Cushioning EVA midsole.
- Removable EVA footbed.
- TARANTULA ANTISLIP® rubber outsole.

NON-SAFETY

EXCLUSIVELY AT
Mark's



DAKOTA
WORKPRO SERIES

STYLE: 5BODDK0-3108
SIZES: 5-11
NON-SAFETY.

Women's Non-Safety Anti-Slip, Slip-On Shoe

- Microfiber and polyurethane upper.
- Breathable mesh lining with **FRESHTECH®**.
- **QUAD COMFORT®**, a better way to walk.
- Cushioning EVA midsole.
- Removable EVA footbed.
- **TARANTULA ANTISLIP®** rubber outsole.

NON-SAFETY

EXCLUSIVELY AT
Mark's



DAKOTA
WORKPRO SERIES

STYLE: 5BODDK3-3109
SIZES: 5-11
NON-SAFETY.

Women's Non-Safety Anti-Slip, Athletic Shoe

- TPU and mesh upper.
- **DRI-TEC** lining with **FRESHTECH®**.
- Removable EVA footbed.
- EVA midsole.
- **TARANTULA ANTISLIP®** rubber outsole.

NON-SAFETY

EXCLUSIVELY AT
Mark's



DAKOTA
WORKPRO SERIES

STYLE: 5BODDK0-3105
SIZES: 5-11
CSA GRADE 1 STEEL TOE, STEEL PLATE, ESR.

Women's STSP Anti-Slip, Lace-Up Safety Oxford

- Microfiber and polyurethane upper.
- Breathable mesh lining with **FRESHTECH®**.
- **QUAD COMFORT®**, a better way to walk.
- Removable EVA footbed.
- Cushioning EVA midsole.
- **TARANTULA ANTISLIP®** rubber outsole.

EXCLUSIVELY AT
Mark's





DAKOTA

WORKPRO SERIES

STYLE: 5BODDK0-3107

SIZES: 5-11

CSA GRADE 1 STEEL TOE, STEEL PLATE, ESR.

Women's STSP Anti-Slip, Slip-On Safety Shoe

- Microfiber and polyurethane upper.
- Breathable mesh lining with **FRESHTECH®**.
- **QUAD COMFORT®**, a better way to walk.
- Removable EVA footbed.
- Cushioning EVA midsole.
- **TARANTULA ANTISLIP®** rubber outsole.

EXCLUSIVELY AT

Mark's

SKECHERS
WORK

STYLE: 108181-BLK

SIZES: 5-10,11

NON-SAFETY.

Stay safe and comfortable on the job with the easy-wearing Skechers Work™ Relaxed Fit®: Squad Chaos SR - Rodey. This slip-resistant athletic style features a synthetic DuraLeather upper with stretch laces and a cushioned Skechers Air-Cooled Memory Foam® comfort insole. They're electric-shock resistant for added safety.

Women's "Squad Chaos" Non-Safety, Slip-Resistant Shoe

- Synthetic duralather upper with stretch laces.
- Skechers Hands Free Slip-ins™ molded heel panel for easy fit.
- Skechers Air-Cooled Memory Foam® footbed.
- Slip resistant traction rubber outsole.



NON-SAFETY



SKECHERS

STYLE: 77210
SIZES: 5-10,11,12
NON-SAFETY.

Women's "Ghenter" Relaxed Fit Slip-Resistant Shoe

- Treated with 3M™ Scotchgard™ to resist water and stains.
- Relaxed Fit® for a roomy comfort fit at toe and forefoot.
- Durable airy mesh and synthetic upper.
- Slip-resistant traction outsole with oil resistance.

NON-SAFETY



SKECHERS

STYLE: 108144-BBK
SIZES: 5-10,11
NON-SAFETY.

"Summits" Non-Safety Slip-Resistant Shoe

- Knit mesh and synthetic upper.
- Skechers Hands Free Slip-ins™ molded heel panel for easy fit.
- Skechers Air-Cooled Memory Foam® footbed.
- Slip resistant traction rubber outsole.

NON-SAFETY



SKECHERS

STYLE: 76551
SIZES: 5-10,11,12
NON-SAFETY.

Women's "Eldred" Slip-Resistant, Lace-Up Shoe

- Smooth leather upper with cooling mesh fabric collar and heel panel.
- Soft fabric lining.
- Removable Skechers Memory Foam™ footbed.
- EVA Midsole.
- Oil & slip resistant rubber outsole.
- Relaxed Fit® design for a roomy comfortable fit.

NON-SAFETY

TARANTULA ANTISLIP® footwear. The ultimate in slip protection.

TARANTULA ANTISLIP®

Our TARANTULA ANTISLIP® outsoles provide the ultimate in slip protection by reducing the likelihood that you'll slip or fall on wet and/or greasy surfaces. To achieve this high performance, the outsoles use a unique tread pattern and advanced soft rubber compounds to increase the coefficient of friction (CoF). The higher the CoF value, the better the slip resistance. Many other shoe outsoles hydroplane on wet surfaces, resulting in poor traction for the wearer. TARANTULA ANTISLIP® outsoles, however, push liquids to the outside using unique micro channels instead of keeping liquids underfoot.

Disclaimer: TARANTULA ANTISLIP® footwear have been tested for wet and dry conditions. They have not been tested for use on any type of ice.

INDEPENDENTLY TESTED FOR SLIP RESISTANCE

TARANTULA ANTISLIP® footwear are all tested at SATRA Technology Centre Ltd. in accordance to test methods SATRA TM144 or ISO 13287. SATRA TM144 is a widely accepted slip resistance test



method in the footwear industry and formed the basis of the European Standard EN ISO 13287. There are slight differences between the two methods, but the basic mechanics are virtually the same and we accept both slip resistance test methods.

TESTING BEYOND THE STANDARDS

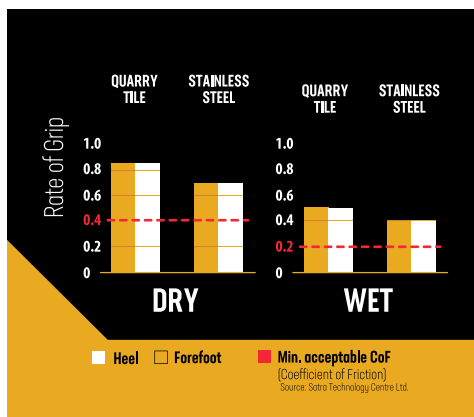
The Canadian Standards Association (CSA) Standard Z195 - Protective Footwear list method ISO 13287 for slip resistance testing. However, currently there are no specified minimum coefficient of friction

(CoF) requirements. To ensure that our line of TARANTULA ANTISLIP® footwear meet a standard level of performance, we developed our own internal standards that must be achieved to qualify as anti-slip footwear. Furthermore, we test all our anti-slip footwear on a yearly basis to ensure that every production meets our performance requirements.

To see more details on how a style performed, please refer to the hangtag attached to the TARANTULA ANTISLIP® footwear style.

The below chart is our TARANTULA ANTISLIP® standard that we hold ourselves to:

Surface Conditions	TARANTULA ANTISLIP® CoF Requirements
Dry Quarry Tile	Heel CoF ≥ 0.85 Forefoot CoF ≥ 0.85
Wet Quarry Tile	Heel CoF ≥ 0.50 Forefoot CoF ≥ 0.50
Dry Stainless Steel	Heel CoF ≥ 0.70 Forefoot CoF ≥ 0.70
Wet Stainless Steel	Heel CoF ≥ 0.40 Forefoot CoF ≥ 0.40



Example of CoF results found on the hangtags attached to our TARANTULA ANTISLIP® safety footwear.

DAKOTA

WORKPRO SERIES

footwear with TARANTULA ANTISLIP® outsoles are exclusive to Mark's and Mark's Commercial.





WOMEN'S
WET WEATHER
FOOTWEAR





AGGRESSOR

STYLE: 5BOEAG8-9601

SIZES: 6-10 (Full Sizes Only)

NON-SAFETY.

Women's NST Insulated Wet Weather Boot

- Waterproof molded TPO upper.
- Wool blend liner is tested to a Comfort Rating -20°C to -30°C.
- Long wearing, self cleaning outsole.

NON-SAFETY

EXCLUSIVELY AT

Mark's



DAKOTA

WORKPRO SERIES

STYLE: 5BOEAG4-9500

SIZES: 6-10 (Full Sizes Only)

CSA GRADE 1 STEEL TOE, STEEL PLATE. ESR.

Designed with adjustable cuffs that shed snow and debris, these rubber boots come with insulated wool felt liners keeping your feet warm and dry in colder environments. The rubber TPO injected construction offers long-term protection in cooler and wet environments. Finished with durable rubber outsoles, these boots have multi-directional traction treads for added traction.

Women's Insulated STSP Wet Weather Boot

- Waterproof molded TPO upper.
- Wool blend liner is tested to a Comfort Rating -20°C to -30°C.
- Long wearing, self cleaning outsole.





STYLE: HHF236113W
SIZES: 5-10 (Full Sizes Only)
 CSA GRADE 1 STEEL TOE, STEEL PLATE. ESR.

Women's Polyurethane STSP Wet Weather Boot

- Oil resistant polyurethane upper.
- Nylon lining.
- Removable polyurethane footbed.
- HELLYGRIP™ rubber outsole.

EXCLUSIVELY AT
Mark's



STYLE: HHF216113W
SIZES: 5-10 (Full Sizes Only)
 CSA GRADE 1 STEEL TOE, STEEL PLATE. ESR.

Keep your feet safe and dry in these Helly Hansen work boots. With steel toes and plates, they have injection-molded shells to keep water on the outside. Ideal for use in wet weather or wet environments.

Women's Polyurethane STSP Wet Weather Boot

- Oil resistant polyurethane upper.
- Nylon lining.
- Removable polyurethane footbed.
- HELLYGRIP™ rubber outsole.



WOMEN'S
WINTER
FOOTWEAR



DAKOTA

WORKPRO SERIES

STYLE: 5BOFDK8-8905

SIZES: 6-10 (Full Sizes Only)

CSA GRADE 1 COMPOSITE TOE, COMPOSITE PLATE. ESR.

Women's "8905" CTCP Transitional Winter Boot

- Waterproof full grain leather upper.
- HYPER-DRI® HD3 waterproof/breathable membrane.
- Mesh lining with 400g T-MAX® insulation.
- QUAD COMFORT®, a better way to walk.
- Removable EVA footbed
- ICEFX® rubber outsole
- Comfort Rating -30°C to -40°C.

EXCLUSIVELY AT
Mark's



DAKOTA

WORKPRO SERIES

STYLE: 5BOFDK7-8520

SIZES: 6-10 (Full Sizes Only)

CSA GRADE 1 STEEL TOE, STEEL PLATE. ESR.

When you're working outdoors during the cold months, you'll appreciate our Dakota women's felt pack winter boots. These safety boots feature composite toes and plates and reflective trim for added visibility in low-light conditions. Ideal for safe traction when it's icy, these boots are equipped with Tarantula Anti-Slip™ on Ice outsoles.

Women's CTCP Felt Pack Winter Boot

- Synthetic polyurethane Nubuck upper.
- Lightweight EVA shell.
- Removable liner system.
- 400g T-MAX® Insulation.
- QUAD COMFORT®, a better way to walk.
- Removable EVA footbed
- ICEFX® rubber outsole.

LINER AVAILABLE 5BOF-LNR-8520



FOOTWEAR **INFORMATION**

How to find the perfect fitting work boot.

1. Have your feet measured.

Your foot size and shape can change over time. So don't rely on the fact that you have always worn a certain size. That size likely is no longer the best fit for you. Most people have one foot that is larger than the other, so make sure you have BOTH feet measured. Fit your shoes to the larger foot. Get measured at the end of the day when your feet are the largest. When you are up during the day, your feet will swell and settle some. You want to make sure you are comfortable throughout the day and not just when you head out of the house in the morning. Since you will be working in these shoes and most likely on your feet the majority of time you wear them, it is necessary to closely represent work-like conditions to ensure they are truly comfortable.

2. Different Brands, Different Sizes

Just like clothes, the size marked inside the shoe may be different depending on the brand. So your shoe size is a just a starting point in selecting the correct shoe. Try on different sizes from multiple brands to make certain you choose the best safety shoe for the job.

3. Lace them up

You should be sure to tie your prospective shoes as if you were going to work. You wouldn't wear your shoes untied on the job, would you? Simulate your work environment as close as possible, testing the shoes for grip and protection – with them laced, of course.

4. Do you wear socks?

Wear the exact socks you wear on the jobsite to the shoe store. Wearing socks that are too thin will make your feet feel squished when you wear your regular socks at work. If you wear socks that are thicker than the ones you wear to work, then your foot will slide around on the jobsite, leading to blisters and other health risks.

5. You won't fit into them over time

Don't plan on shoes stretching over time; they should fit well when you buy them. It's like buying clothes that are too small and hoping that you will lose weight and then they will fit. That rarely happens.

6. Look for comfort

The ball of your foot (the widest part just before your toes begin) should fit comfortably in the widest part of the shoe. The shoe should also have enough depth to fit your toes, especially if you have hammertoes or other conditions. Shoes with too small of a toe box will cause rubbing and you will get calluses or sores.

7. Wiggle Room

With any pair of shoes, it is recommended that you are able to fit your index finger between the heel of your foot and the heel of the shoe, as well as the top of your foot and the tongue of the shoe. This test ensures that you have proper "wiggle room" to comfortably move throughout your work day.

8. Walk Around

Always stand and walk around in the shoes to see if they are comfortable, fit well, and don't chafe or rub anywhere. Your heel should not slip or slide while walking. Find out in the store if they are a good fit and not on the job site.

Now That You're Wearing Them

Rotate Your Footwear

Most workers buy a pair of boots and wear them till they're worn out. Boots (and shoes) last much longer if they are rotated in use. Alternating 2 pairs gives each one a chance to completely dry out between uses. Your boots will last longer and your feet will be more comfortable.

Maintain Your Boots

All boots will last longer and be more comfortable if they are well taken care of: Dry Your Boots – Allow your boots to dry after a long day on the job. Boots like to air dry without excessive heat. Never subject your boots to more heat than your hand can stand. Remove insoles to speed drying. If your boots get soaked, fill them with wads of newspaper. It will draw out the moisture from within.

Keep Them Clean

Remove mud to keep the leather from drying out. A stiff brush works well and avoids getting your boots wet. Remove salt with a mild solution of vinegar and water.

Leather Boots Like Conditioner

Waterproof leathers do not need the same level of conditioning as regular leathers but all leathers benefit from conditioner. Boots should be clean and dry before applying conditioner. Oil-based treatments will soften the leather. Silicone- or PTFE- based treatments add waterproofing without softening the leather.



Four Basic Footwear Components

UPPER

This area of the boot is usually made up from different leathers or a combination of materials and special fabrics. These can include:

Full Grain Leather

Full-grain leather is made from the whole hide of the animal. The hide of an animal is strongest and most durable just below the hair. Once the hair is removed during processing, the natural grain pattern is visible. The leather made with this part of the hide is called full-grain leather, and because the grain is tighter at this layer, it resists moisture very well. Full-grain leather incorporates the entire grain of the hide with all the imperfections and inherent toughness of the material.

Nubuck Leather

Nubuck is simply sanded or buffed leather, giving it a velvet-like surface. While visually it may be confused with Suede, which is produced from the lower part of the skin (splits), Nubuck comes from the top part (full grain), making it more robust and durable than suede.

Buffalo Leather

Buffalo leather (also referred to as English Saddle leather) is the tanned hide of one of the 74 species of domestic Buffalo. It has a more distinctive grain than bovine leather and comes in many colours and finishes, characterised by rich, deep tones that give it a striking appearance.

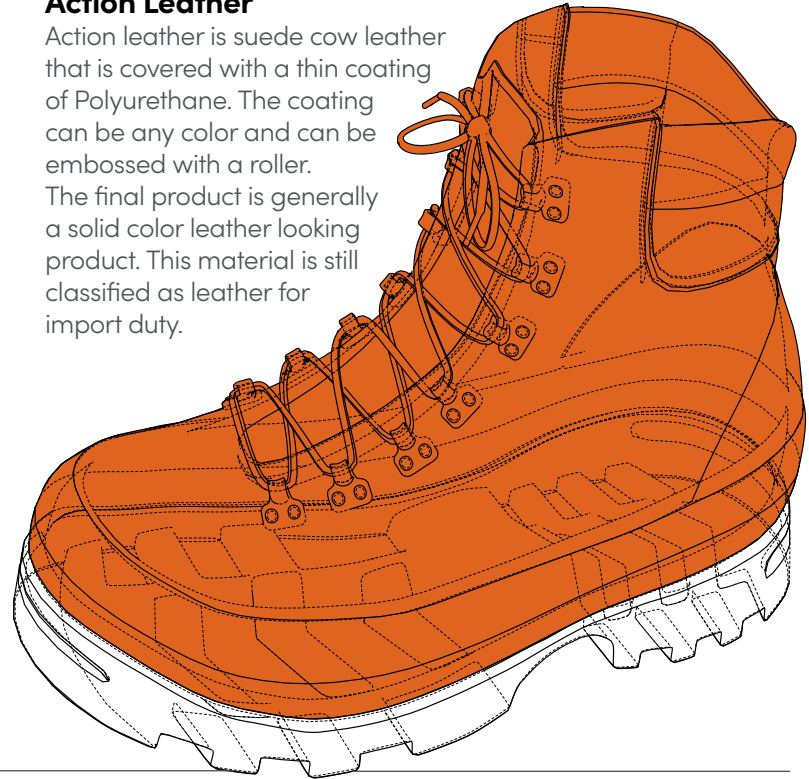
Suede

Suede is really a type of split leather – in fact, it's the innermost layer of the hide. Most commonly, it comes from sheep,

but also from deer, goats and calves. Thicker hides have the same feel but become shaggier, rather than the preferred napped feel. The thin innermost layer is cut off to create a thin, soft material. Technically, this layer doesn't have to be cut off; however, that would leave a thick, less pliable leather which usually isn't preferred for suede products.

Action Leather

Action leather is suede cow leather that is covered with a thin coating of Polyurethane. The coating can be any color and can be embossed with a roller. The final product is generally a solid color leather looking product. This material is still classified as leather for import duty.



FOOTBED / INSOLE

The footbed is the inside part of the shoe that runs under the bottom of the foot and is more commonly referred to as the insole. It may have layers of construction and structural elements added for better fit and comfort and may have a removable sock liner.

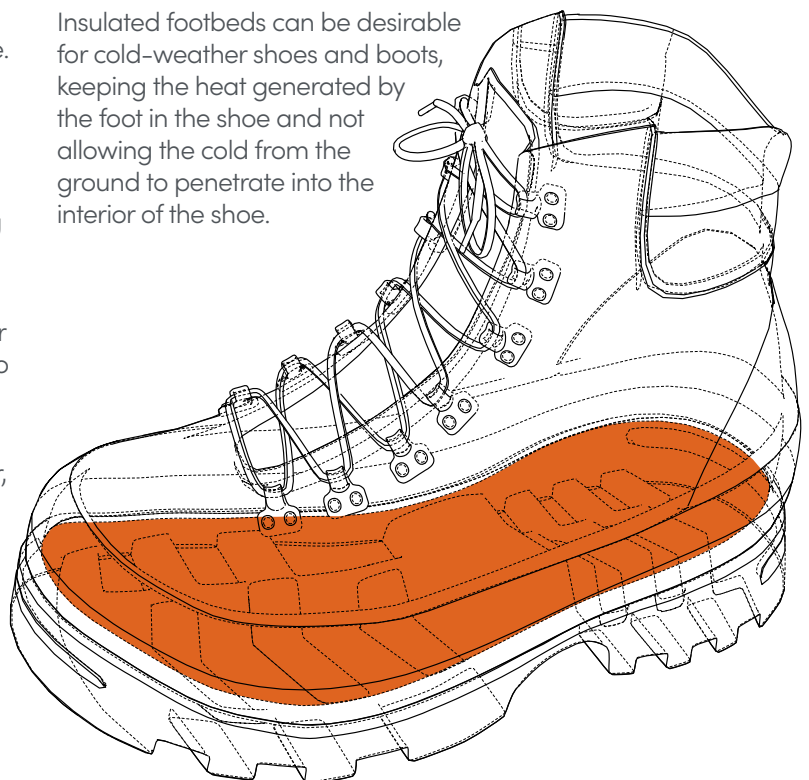
Shoes have been further developed to have contoured footbeds that may provide cushioning and support for different areas of the foot. They may have structural arch supports built in, cushioning for the heel, and be shaped to cradle the foot.

Ethylene vinyl acetate (EVA) foam is a shock-absorbing element that was initially seen in athletic shoes but is now also common for footbeds of all types of footwear. It can be compression molded to specific shapes as desired. It can be made with recycled materials or blended with other materials such as cork.

Natural materials used for footbeds include cellulose, latex rubber, jute, bamboo, cork, and leather. Some shoe manufacturers add anti-microbial elements to their footbeds. These help keep the

shoes fresh and prevent foot odor by inhibiting the growth of bacteria that produce the unwanted smell.

Insulated footbeds can be desirable for cold-weather shoes and boots, keeping the heat generated by the foot in the shoe and not allowing the cold from the ground to penetrate into the interior of the shoe.



Four Basic Footwear Components

MIDSOLE

Sandwiched between the outsole and the upper, the midsole is one of the most important components of any boot, and one you should watch out for. A well thought out midsole can provide ample shock absorption, flex support and added cushioning.

POPULAR MIDSOLE COMPOUNDS

PU (Polyurethane)

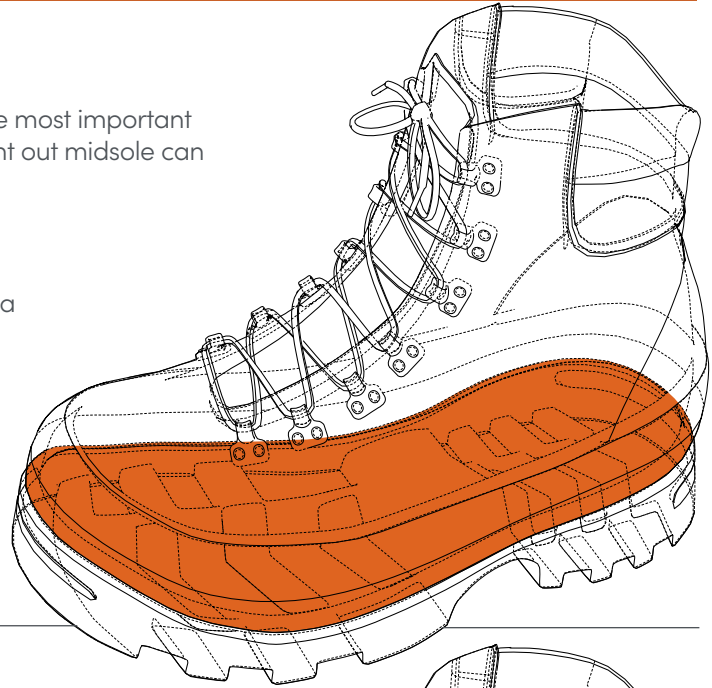
More durable but heavier than EVA. Great resistance to chemicals and has a better lifespan and shock absorption.

EVA (Ethylene Vinyl Acetate)

Super lightweight and flexible compound. It can breakdown when exposed to chemicals and will compress overtime.

Rubber sponge

A durable compound that maintains its cushioning abilities and shape for a long time with a lower cost than polyurethane.



OUTSOLE

The outsole is the outermost part of the shoe that is in contact with the ground. The outsole is meant to provide footwear with the necessary traction and protection from the surfaces it will be in contact with. They can be made from various materials, often rubber, polyurethane, leather, and other synthetic materials. The material used is dependant on the usage and the environment the boot will be subjected to.

POPULAR OUTSOLE COMPOUNDS

RUBBER

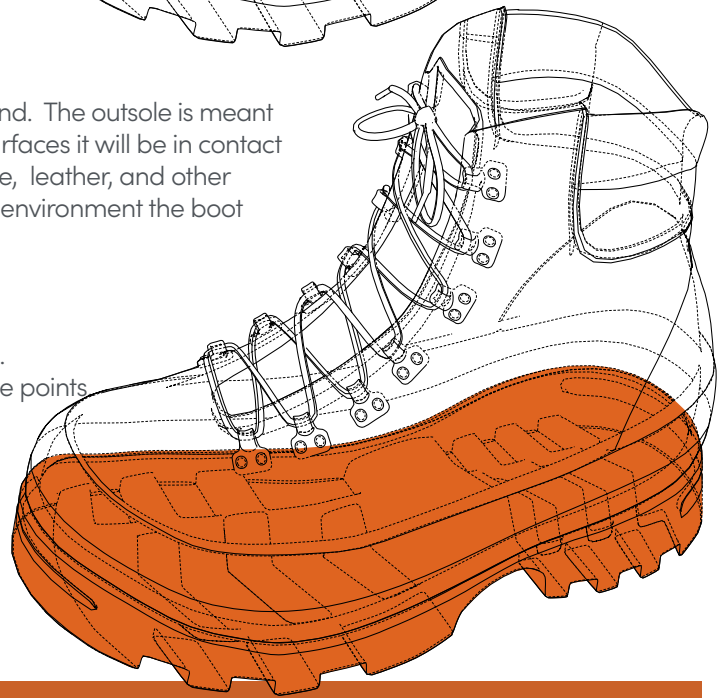
Natural rubber often mixed with additives to provide oil and slip resistance. Heavier than polyurethane and TPU but the benefits outweigh the negative points. More pliable in cold climates.

POLYURETHANE (PU)

Resistant to chemicals and lightweight although prone to hardening in extreme cold. Can be a less expensive option for an entry level boot.

THERMO-PLASTIC POLYURETHANE (TPU)

Great abrasion, heat and chemical resistance with cold weather performance.



Safety Components

STEEL TOE VS. COMPOSITE TOE

Steel toe offers classic protection with the highest available standard for impact and compression. It leaves a roomier fit in the toe box and has incredible durability. Composite toe is a great alternative to steel toe, it passes the same protection standards as steel toe but is non-metallic and lighter compared to traditional steel.

PLATE

Steel-plated safety shoes offer puncture resistance in the sole of the shoe. Composite plate safety shoes offer lightweight, metal-free puncture resistance.

MET GUARD

There are two types of metatarsal guards – external and internal. They both have to meet the same CSA Z195-14 and ASTM standards, using a specific impact test for metatarsal guards. A 50-pound weight in the shape of a 1 inch diameter bar is dropped eighteen inches onto the metatarsal area of the shoe, resulting in a 75 foot-pound impact to the metatarsal guard. A full 1-inch clearance

must be maintained under the metatarsal impact area on the inside of the shoe. The results are clearly seen and measured from a soft wax foot-form, which was placed within the shoe before the test and removed afterward to measure the deflection of the guard during impact.

ELECTRIC SHOCK RESISTANCE (ESR)

Contains a sole and heel design assembly that at the point of manufacturing has insulating properties intended to withstand 18,000 volts.

STATIC DISSIPATIVE

Static dissipative is the opposite to Electric Shock Resistance, SD grounds you. The outsoles are made from an anti-static compound, chemically bound into the bottom components, capable of dissipating an electrostatic charge in a controlled manner.



ARMOUR FLEX® /ARMOUR FLEX+®

This technology is a multi-layer textile composite made from a high tenacity yarn. The woven fabric undergoes different treatments to reach the desired level of hardness while maintaining its flexibility. The ARMOUR-FLEX® textile insole can be sewn directly onto the upper and offers a greater area of protection of the bottom of the foot. ARMOUR-FLEX® will keep your feet warmer in winter because, unlike steel, it will not conduct heat away from your foot. ARMOUR-FLEX® provides the technology that you need to keep your feet protected, while still allowing your foot to bend. ARMOUR-FLEX+® uses a slightly heavier and stiffer material than regular ARMOUR-FLEX® construction and offers a higher puncture resistance.



DURATOE®

DURATOE® is a molded toe cap applied to the outside of the work boot to increase the life of the toe area of the boot. The toe cap can be made of a variety of materials that may look or have properties similar to plastics and other artificial components. They will be quite flexible and extremely durable, ensuring that the toes of your work boots withstand hard wearing.



FRESHTECH®

FRESHTECH® is a safe and invisible antimicrobial treatment that is applied to our footwear and garment products. In garments the treatment inhibits the growth of bacteria that cause odor. In footwear the treatment inhibits the growth of fungi, mold, and mildew, in addition to odor causing bacteria. The FRESHTECH® treatment stops bacteria and fungi from reproducing, which creates a safe and comfortable product. We ensure the effectiveness and durability of FRESHTECH® through standard testing.



HYPER-DRI® FOOTWEAR

Waterproof/Breathable: Designed with a seam sealed, bootie shaped, waterproof and breathable membrane providing an impenetrable barrier to the elements while allowing body generated moisture to escape. The membrane used must meet our high waterproof and water vapour transmission testing standards. Footwear is water tank tested to 50 000 foot flexes to simulate extreme conditions.



QUAD-COMFORT®

The QUAD COMFORT® footwear technology consists of a minimum of 4 comfort components, which address shock absorption, weight distribution, cushioning & pressure displacement and occasionally outsole performance. The construction of the footwear depends on their end use and the requirements of the footwear. The four components are integrated between the footbed or insole through to the bottom of the outsole. If a component provides a significant and functionally noticeable advantage, it may also comprise a feature that is incorporated into the upper of the footwear. Shock absorption is addressed by adding additional cushioning in the heel of the shoe as it is the first areas of contact when walking. Another component of comfort can be added under the ball of the foot to help distribute weight, alleviate pressure points and provide greater energy return. For cushioning and pressure displacement, our footwear uses lightweight, flexible functional midsoles that can be made up of many densities of cushioning. Lastly, outsoles are functionally engineered to provide the utmost in comfort, shock absorption and flexibility.



TARANTULA ANTI-SLIP®

Our TARANTULA ANTI-SLIP® outsoles provide the ultimate in slip protection by reducing the likelihood that you'll slip or fall on wet and/or greasy surfaces. To achieve this high performance, the outsoles use a unique tread pattern and advanced compound to increase the coefficient of friction. Our anti-slip outsoles provide incredible grip to resist slipping on most surfaces including wet, soapy, oily and greasy surfaces. To achieve this high performance, the footwear has a unique tread pattern and soft rubber compound to increase the coefficient of friction. Many other shoe outsoles hydroplane on wet surfaces, resulting in poor traction for the wearer. TARANTULA ANTI-SLIP® outsoles, however, push liquids to the outside using unique micro channels, instead of keeping liquids underfoot.

DISCLAIMER: This footwear has been tested for wet and dry conditions. It has not been tested for use on any type of ice.



ICEFX®

Leading-edge technology features an innovative tread design to provide greater surface contact in the heel strike zone and forefoot to achieve an anti-slip outsole. The outsole uses a softer, more flexible rubber compound that performs in the cold and incorporates gripping pods to provide advanced traction. ICEFX® may also utilize other compounds or materials in the outsole to help achieve slip resistance on ice. Constant research is explored to search for new and better materials to provide a "Safer Way to Walk on Ice".

DISCLAIMER: ICEFX® provides enhanced traction on ice but does not guarantee slips will not occur under any circumstances. Care should always be taken when walking on ice.



T-MAX®

The warmest, lightest hypo-allergenic insulation on the market. It regulates body temperature by allowing moisture to move away from the body, keeping the body dry and comfortable.



VIBRAM®

Vibram soles are an expert integration of functional design and high performance compounds. Vibram ensures that demanding workers have reliable and safe products for their professional activities, in any situation, in any weather condition or environment. Grip, stability, heat and oil resistance, electrical hazard rated, flexibility: a boot powered by Vibram improves worker efficiency, performance, reliability and comfort.



VIBRAM FIRE & ICE™

The Vibram® Fire & Ice™ compound has been studied for extreme applications and maintains its performance values in a wide range of temperatures (from - 20°C to + 250°C). The formulation satisfies both requirements for fire resistance from NFPA and the Ross cold flex at -23°C.

Deciphering The Symbols



CSA Green Triangle

Indicates sole puncture protection with Grade 1 protective toecap which can withstand impacts of 125 joules (22.7 kg object falling from 56 cm above).



CSA White Rectangle with Orange Omega

Indicates soles that provide electric shock resistance. Intended to withstand 18,000 volts at 60Hz for one minute without disruptive discharge to ground; leakage current not exceeding 1mA.



CSA Yellow Rectangle

Indicates soles are static-dissipative.

Warning: This footwear should not be used where contact with live electrical conductors can occur.



CSA Blue Rectangle

Indicates Grade 1 protective toecap without sole puncture protection.



CSA Dark Grey Rectangle with White M

Indicates metatarsal protection. Note: Toe protection is required for all metatarsal protective footwear.

These boots are intended for industrial work environments where heavy objects can hurt the metatarsal region of the foot.

The Language of Footwear

ANSI

International standards organization that develops and publishes voluntary consensus technical standards for a range of materials.

Aerospace Lining

A breathable synthetic lining comprised of a mesh-like structure.

Anti-microbial

A chemical treatment applied to footwear linings which prevents microbe growth.

ATCP

Aluminum toe, composite plate.

Cement Construction

A shoe construction in which the upper of a shoe is cemented, rather than stitched, to the bottom of a shoe. Cement construction results in a lighter, more flexible shoe.

Contoured Footbed

An insole that molds to the shape of your foot.

Composite Plate

A safety, puncture resistant sole plate used in safety footwear in replacement of steel plates. A few varieties exist today, made of synthetic materials such as nylons, resins and also Kevlar.

CTCP

Composite toe, composite plate.

Dri-Tec

A generic term for breathable, moisture-wicking lining found in footwear.

Dual Density Midsole

A midsole that employs two different densities of cushioning foam.

ESR

Electrical shock resistance.

EVA

Ethylene Vinyl Acetate - A synthetic compound used for outsoles. EVA provides cushioning to the footbeds, midsoles, and is easily shaped by heat and pressure.

Footbed

Sometimes also referred to by customers as the insole. It is the foundation in footwear that rests under the foot and has a critical role in comfort.

Goodyear Welt Construction

A shoe construction in which the upper and sole of the shoe are stitched together, resulting in greater durability. The resulting seam is visible and runs around the outside of the shoe, where the upper and outsole meet.

Green Diamond Technology

Patented silica carbide crystals are embedded throughout the rubber outsole which are durable and long lasting traction on ice.

Heel Counter

Counters provide support and help the upper wrap around the foot.

Injection Molded Construction

A type of sole unit construction created by injecting material into the sole mold. Injection molded construction is an efficient way to mass-produce footwear.

Inseam

The hidden seam of a welted shoe holding together the welt, upper, lining and insole.

Metguard

A safety feature found in some boots which is comprised of a protective cap that covers the metatarsal area of the foot and protects against injury from impacts. Can be internal or external.

Moisture Wicking

Synthetic materials that have been developed specifically to channel perspiration away from the body.

Nubuck Leather

Nubuck is a type of leather with a soft, velvety surface and is far more durable than suede.

Oarprene

Rubber that is acid and oil resistant.

OrthoLite

OrthoLite insoles are made up of open-cell foam, allowing air to circulate around the foot, keeping it cooler inside the shoe. The open cell structure also moves moisture away from the foot, keeping it drier.

PU

Polyurethane; a type of man-made material.

PVC

Polyvinyl chloride. A semi-rigid plastic, often used in heel counters and outsoles for added support.

SD

Static Dissipating. The shoe dissipates static buildup on the body so as not to cause an arcing effect.

STSP

Steel toe, steel plate.

STCP

Steel toe, composite plate.

TPR

Thermo plastic rubber. A plastic material used by many manufacturers in the injection molding process.

TPU

Thermopolyurethane. Man made material used in footwear production on uppers, but also outsoles.

Upper

The part of the shoe that covers the top part of the foot, from heel to toe.

Welt

A strip of material sewn between the insole and the outsole to create greater durability.

INDEX

MEN'S

8 INCH BOOTS

10-8680	21	163-01
1025690	22	168-01
1026789	22	180-01
310090	14	5630GT
4TERDB	15	5ANBDK0-6557
5ANADK0-8560	7	5ANBDK2-6006
5ANADK2-8006	8	5ANBDK2-6100
5ANADK2-8500	8	5ANBDK2-6101
5ANADK2-8529	10	5ANBDK2-6500
5ANADK2-8529WP	9	5ANBDK2-6612
5ANADK2-8610	9	5ANBDK3-6300
5ANADK2-8611	4	5ANBDK3-6611
5ANADK3-8300	4	5ANBDK4-6200
5ANADK4-8100	3	5ANBDK6-6877
5ANADK4-8200	2	5ANBDK8-6002
5ANADK4-8700	5	5ANBDK9-6114
5ANADK5-8877	5	5ANBDK9-6518
5ANADK7-8510	8	8820GT
5ANADK8024B	6	91631
5ANADK8-8523	7	960-02
5ANADK9-8517	8	968-01
5ANADK9-8518	2	CMR6971
5ANADK9-8522	9	HHS202026
5ANADK9-8537	3	HHS202031
5ANADK9-8557	3	HHS212042
5700GT	6	HHS232001
5700GTR	21	HHS242002
6020VT	21	HHS243001
837CBN	20	HHS243002
8600FLX	15	P717627
CMR1999	22	P720204
CMR8939	20	P724582
HHF212005	20	P725873
HHF231104	11	TB0A1Q6R001
HHS202022	12	TB0A22H2231
HHS202030	12	TB0A5NFT214
HHS212040	12	TB0A5QJ2231
HHS232000	13	TB0A5YHQ231
HHS242003	10	TB0A5X93214
HHS242004	10	TB0A5ZZK214
KD0A4THHBLK	11	TB0A66KYEM4
P717629	14	TR0A4NRFBK
P720211	16	TR0A4T8VBLK
P725891	15	
TB0A12EZ214	16	HIKERS
TB0A1Q5U214	16	1020096
TB0A1Q6Z001	17	1027118
TB0A24AJ214-1	17	26039MDQC-AS
TB0A28VR214	18	302123
TR0A4NQ9FWE	19	5ANCAG9-2000
TR0A4NRQGYX	13	5ANCAG9-2300
TR0A4TCRFWE	14	5ANCDK0-2301
TB0A5U6Y214	13	5ANCDK0-2302
TB189645001	17	5ANCDK2-2410
TB1A1VYP001	18	5ANCDK2-2411
TB1A28VR214	18	HHS211005
TB1A4499214	19	HHS231006
	19	HHS231007
		HHS241010
		J003345W
	28	J003347W
	27	J005467W
	26	KD0A4TELA62
	26	P720996
	27	P725173
	28	
	28	CASUAL
		10-501
		1029360
	43	108008BLL
	43	5ANDAG2-3001

METATARSAL

1027693
2988B
5ANADK2-8514
5ANADK3-8112
HHS222044
TB0A1WUT001
TB0A66G7EDW

6 INCH BOOTS

1023250
1029855

44	5ANDDK0-1117QC
45	5ANDDK0-1119QC
45	5ANDDK1-3830
46	5ANDDK1-3831
44	5ANDDK2-3613
31	5ANDDK2-4000
34	5ANDDK4-4001
30	5ANDDK6-3617
31	5ANDDK8-3603
35	5ANDDK8-3604
32	602SP2
32	99993001
33	99999110
30	99999401
33	99999402
34	99999403
35	99999066
34	HHS194002
45	HHS194003
42	HHS214004
46	IB3317
46	IB4041
44	IB4311
37	P725306
37	P725307
37	P725695
36	P726026
35	P726027
36	TB0A29C6001
36	TB0A297S001
39	TB0A5TYB001-01
38	TB0A5ZX3001
39	TB0A61YH065
39	TB0A66SKEEM
42	
42	STATIC DISSIPATIVE
40	5ANDDK9-3200
41	5ANDDK9-3201
40	77A77068
41	TB0A2A55001
41	
43	ANTI-SLIP
38	200205-BBK
38	5ANDAG2-3400
	5ANDAG2-3401
	5ANDAG2-3403
53	5ANDDK0-3020
53	5ANDDK0-3021
49	5ANDDK0-3023
52	5ANDDK0-3025
48	5ANDDK0-3026
48	5ANDDK0-3027
49	5ANDDK3-3028
48	5ANDDK3-3029
49	77048
50	77156
51	
50	TACTICAL
50	5402
51	5419
54	5420
54	5440
54	5448
52	
52	WET WEATHER
53	3186-11A
	5ANDK3-9860
	5ANEAG2-9500
66	5ANEAG2-9600
65	5ANEDK3-9850
61	8564
56	9699

59	A1305B-11
59	E902033
59	HHF196120
60	HHF234011
56	HHF234012
58	HHF236121
58	HHS222010
57	LICO-M001
56	LICO-MP01
57	LJ2HX42
66	LPLKL01
67	N5P3
69	N5P3G
68	PB661841MWCSA
68	TR113001BLK-1
68	
69	WINTER
60	5ANFAGW0-8910
60	5ANFDKW2-8907
61	5ANFDKW3-8901
67	5ANFDKW4-8911
66	5ANFDKW6-8524
67	5ANFDKW8-8527
62	5ANFDKW8-8530
62	915605
62	HHF221101
61	HHF231102
63	HHF231103
64	JD6610
65	JD7710
65	TB0A5QXJ001
63	
63	WOMEN'S
64	8 INCH BOOTS
	5BOAAG6-8500
	5BOADKO-8030
71	5BOADK4-8006
71	5BOADK5-8112
72	5BOADK9-8016
72	HHS202181W
	P311182
	TB0A1KQS001
78	TB0A5V1U214
74	TB1A5V1U214
74	TROA4NRDBLK-01
74	
76	6 INCH BOOTS
77	1022104
77	163-01
75	168-01
75	180-01
75	960-02
76	968-01
76	5BOBAG4-6500
78	5BOBDK2-6030
77	5BOBDK4-6000
	5BOBDK5-6016
	5BOBDK6-6006
80	HHF191061W
81	HHS202160W
81	KD0A4TDFBLK
80	P310912
81	TB0A1KJU214
	TB0A2KAJ231
	TB0A5V2F001
90	TB0A612F214
83	TB1A5V2F001
83	
83	HIKERS
84	305003DW
87	5BOCAG9-2501
87	5BOCAG9-2502

89	5BOCDK0-2003	114
89	5BOCDK0-2007	113
85	5BOCDK8-2120	114
84	HHS231009W	115
84	HHS231010W	115
86	J006128	116
85	J006146	116
86		
86	CASUAL	
87	1025244	122
88	308004BLK	122
90	308005BLK	122
90	5BOCDK7-3602	119
88	5BODAG9-1501	118
89	5BODDK8-1007	118
	5BODDK9-1008	118
	5BODDK9-1009	119
93	5BODWM2-102	126
93	5BODWM2-103	126
93	5BODWM2-104	126
94	99993551	124
95	99997000	125
95	99997001	125
94	99997002	125
97	HHS201006W	120
96	IB046	123
96	IB314	123
97	IB492	124
98	P310493	120
98	P725770	120
97	TB0A2A63001	121
	TB0A632U001	121
	TB0A66T7ECS	121

100	ANTI-SLIP	
101	108181-BLK	130
100	108144-BBK	131
101	5BODAG2-3400	128
101	5BODAG2-3401	128
102	5BODDK0-3105	129
102	5BODDK0-3106	128
102	5BODDK0-3107	130
103	5BODDK0-3108	129
103	5BODDK3-3109	129
103	77210	131
	76551	131

WET WEATHER

109	5BOEAG4-9500	134
110	5BOEAG8-9601	134
110	HHF216113W	135
111	HHF236113W	135
111		

WINTER

105	5BOFDK8-8905	137
106	5BOFDK7-8520	137

HIKERS

116
113
113



Working Together Towards
An Incident Free Future

*It is our mission to work with forward thinking organizations,
to keep Canadian employee's warmer, drier and safer
using leading edge technology and innovation,
with the goal of achieving an accident free future
and bringing employee's home safe...every single day.*



HEAD OFFICE

205 Quarry Park Blvd. SE
Calgary, Alberta

P 1.855.592.7444

W markscommercial.com